

Sect.	Type	Room	Instructor	Hrs.	Units	Days	Begin-End	Footnotes
-------	------	------	------------	------	-------	------	-----------	-----------

## MUSIC

**MUS 1A Music History and Literature**

**Advisory:** Eligible for English 250 and English 260.

**Transferable:** CSU; UC; CSU-GE: C1; IGETC: 3A; GAV-GE: C1; CAN: MUS 8

A survey of the development of music in western civilization including representative composers from the Medieval to the present. Music 1A will study the music and styles from the Medieval to the Romantic period.

4681	ONLINE	BENKMAN N	3.40	3.0	DHR	0000-0000	38
------	--------	-----------	------	-----	-----	-----------	----



This online class will be delivered entirely over the internet. After enrolling, start the class by going to <http://www.gavilan.edu/disted/>, click on your class link, and email the instructor at [nbenkman@gavilan.edu](mailto:nbenkman@gavilan.edu). Students who have not begun the class or contacted the instructor by 5 pm on Monday, February 5 will be dropped from the class.

**MUS 1B Music History and Literature**

**Advisory:** Eligible for English 250 and English 260.

**Transferable:** CSU; UC; CSU-GE: C1; IGETC: 3A; GAV-GE: C1

A survey of the development of music in western civilization including representative composers from the Medieval period to the present. Music 1B will study the music and styles from late Romanticism to the present.

4682	LEC	AL101	AMIRKHANIAN	3.40	3.0	MW	0945A-1110A
------	-----	-------	-------------	------	-----	----	-------------

**MUS 3A Harmony - Theory - Musicianship**

**Advisory:** Must be taken in sequence.

**Transferable:** CSU; UC; CSU-GE: C1; GAV-GE: C1

Fundamentals of music, beginning harmony.

4683	L/L	TH130	JUNCKER A	4.50	4.0	TuTh&2.3	0900A-1105A
------	-----	-------	-----------	------	-----	----------	-------------

**MUS 3B Harmony - Theory - Musicianship**

**Advisory:** Must be taken in sequence.

**Transferable:** CSU; UC; GAV-GE: C1

Fundamentals of music, beginning harmony.

4684	L/L	TH130	JUNCKER A	4.50	4.0	MW&2.3	0900A-1105A
------	-----	-------	-----------	------	-----	--------	-------------

**MUS 3C Intermediate Harmony - Theory**

**Advisory:** Music 3B

**Transferable:** CSU; UC; GAV-GE: C1

Continuation of Music 3AB. Chromatic harmony, analysis and composition.

4685	L/L	TH130	JUNCKER A	4.50	4.0	MW&2.3	0900A-1105A
------	-----	-------	-----------	------	-----	--------	-------------

**MUS 3D Intermediate Harmony - Theory**

**Advisory:** Music 3C

**Transferable:** CSU; UC; GAV-GE: C1

Continuation of Music 3C. Analysis and composition.

4686	L/L	TH130	JUNCKER A	4.50	4.0	MW&2.3	0900A-1105A
------	-----	-------	-----------	------	-----	--------	-------------

**MUS 4A Beginning Piano**

**Advisory:** Must be taken in sequence.

**Transferable:** CSU; UC; CSU-GE: C1; GAV-GE: C1

Introduction to music fundamentals and keyboard technique. Development of beginning keyboard skills including note reading in bass and treble clef, fingering, rhythm, key signatures, primary chords and inversions.

4687	L/L	TH130	AMIRKHANIAN	4.60	3.0	TuTh	0900A-1105A
------	-----	-------	-------------	------	-----	------	-------------

4688	L/L	TH130	AMIRKHANIAN	4.60	3.0	MW	1120A-0125P
------	-----	-------	-------------	------	-----	----	-------------

6144	L/L	TH130	MELLO S	4.60	3.0	M&2.3	0630P-0940P
------	-----	-------	---------	------	-----	-------	-------------

## FACULTY

## Profile

**Maria Amirkhanian:**

Award winning concert pianist, Maria Amirkhanian, comes to Gavilan College with a wealth of teaching experience backed by a lifetime of live musical performances that have spanned the globe.

Growing up in a musical family, Dr. Amirkhanian started playing piano at an early age. At the tender age of five, she began her studies at the Tchaikovsky School of music in the now former Soviet Union. Coming to the United States in the early 90's, she attended CSU, Fresno and received her Master's degree. She later completed her doctorate at the Moscow Conservatory of Music in Russia.

Take a music class with Dr. Amirkhanian at Gavilan College, or come see her play live at the Gavilan College "Bach to Blues" concert on March 9 or March 17 with the South Valley Symphony!

## FREE TUTORING!

Gavilan College  
**Math Lab**

Staffed by the Math Department

**Services for Gavilan Students:**

**Free Tutoring for MATH**

**Free Computer Assistance**

**PH101**

For daily schedule or for free Math downloads, check our website - <http://www.gavilan.edu/mathlab/>

**THERE'S A  
TV STATION AT  
GAVILAN**



**Community Media Access Partnership (CMAP) manages the four community TV channels in Gilroy, Hollister and San Juan Bautista.**

**Any resident can submit a video to air, or you can learn how to use CMAP's video equipment and make a TV show.**

**Channel 17  
City View**

**Channel 18  
GavTV**

**Channel 19  
EdTV**

**Channel 20  
Public Access**

**INTERESTED? CHECK OUT OUR WEBSITE: [WWW.MYCMAP.ORG](http://WWW.MYCMAP.ORG) OR DROP BY OUR FACILITY IN L-139!**

**Footnotes contain valuable information pertaining to your class selection. Footnotes follow class listings.**

Sect. Type Room Instructor Hrs. Units Days Begin-End Footnotes

**MUS 4B Beginning Piano**

Advisory: Music 4A

Transferable: CSU; UC; GAV-GE: C1

Continuation of Music 4A.

4689	L/L	TH130	AMIRKHANIAN	3.30	2.0	MW	1255P-0220P
6145	L/L	TH130	MELLO S	3.30	2.0	M	0630P-0940P

**MUS 5A Intermediate Piano**

Advisory: Music 4B

Transferable: CSU; UC; GAV-GE: C1

Development of intermediate keyboard skills through means of scales, chords, and technical studies. Continuation of music fundamentals and beginning keyboard harmony; introduction of easier classical and standard piano literature.

4690	L/L	TH130	AMIRKHANIAN	3.30	2.0	MW	1255P-0220P
6146	L/L	TH130	MELLO S	3.30	2.0	M	0630P-0940P

**MUS 5B Intermediate Piano**

Advisory: Music 5A

Transferable: CSU; UC; GAV-GE: C1

Development of intermediate keyboard skills through means of scales, chords and technical studies. Continuation of music fundamentals and beginning keyboard harmony; introduction of easier classical and standard piano literature.

4691	L/L	TH130	AMIRKHANIAN	3.30	2.0	MW	1255P-0220P
6147	L/L	TH130	MELLO S	3.30	2.0	M	0630P-0940P

**MUS 5C Advanced Piano**

Advisory: Music 5B

Transferable: CSU; UC; GAV-GE: C1

Development of advanced keyboard skills through means of scales, chords and technical studies. Continuation of music fundamentals and keyboard harmony; introduction of moderately difficult classical and standard piano literature.

4692	L/L	TH130	AMIRKHANIAN	3.30	2.0	MW	1255P-0220P
6148	L/L	TH130	MELLO S	3.30	2.0	M	0630P-0940P

**MUS 5D Advanced Piano**

Advisory: Music 5C

Transferable: CSU; UC; GAV-GE: C1

Development of advanced keyboard skills through means of scales, chords and technical studies. Continuation of music fundamentals and keyboard harmony; introduction of moderately difficult classical and standard piano literature.

4693	L/L	TH130	AMIRKHANIAN	3.30	2.0	MW	1255P-0220P
6149	L/L	TH130	MELLO S	3.30	2.0	M	0630P-0940P

**MUS 8A Beginning Voice**

Advisory: Continues in sequence or by demonstrated proficiency.

Transferable: CSU; UC; GAV-GE: C1

Development of techniques in the art of singing and interpreting serious music in various styles. Study of the basic techniques of tone production, breathing and related skills. Basic repertoire development.

4694	L/L	TH130	PRUITT N	2.30	2.0	TuTh	1120A-1245P
------	-----	-------	----------	------	-----	------	-------------

Sect. Type Room Instructor Hrs. Units Days Begin-End Footnotes

**MUS 8B Beginning Voice**

Advisory: Music 8A or demonstrated proficiency.

Transferable: CSU; UC; GAV-GE: C1

Development of techniques in the art of singing and interpreting serious music in various styles. Study of the basic techniques of tone production, breathing and related skills. Basic repertoire development.

4695	L/L	TH130	PRUITT N	2.30	2.0	TuTh	1120A-1245P
------	-----	-------	----------	------	-----	------	-------------

**MUS 8C Intermediate Voice**

Advisory: Music 8B or demonstrated proficiency.

Transferable: CSU; UC; GAV-GE: C1

Development of techniques in the art of singing and interpreting serious music in various styles. Study of the basic techniques of tone production, breathing and related skills. Basic repertoire development.

4696	L/L	TH130	PRUITT N	2.30	2.0	TuTh	1120A-1245P
------	-----	-------	----------	------	-----	------	-------------

**MUS 8D Intermediate Voice**

Advisory: Music 8C or demonstrated proficiency.

Transferable: CSU; UC; GAV-GE: C1

Development of techniques in the art of singing and interpreting serious music in various styles. Study of the basic techniques of tone production, breathing and related skills. Basic repertoire development.

4697	L/L	TH130	PRUITT N	2.30	2.0	TuTh	1120A-1245P
------	-----	-------	----------	------	-----	------	-------------

**MUS 9A Guitar**

Advisory: Students must provide their own guitars.

Transferable: CSU; UC; GAV-GE: C1

An introduction to playing the guitar. Basic staff notation, correct fingering and chord arpeggios are covered. Emphasis is also placed on developing musical listening skills. Students must provide their own guitars. May be repeated once for credit.

4698	LAB	HOL2	MONTOYA T	3.30	1.0	M	0100P-0405P
Above class meets at the Hollister Briggs site							

6150	LAB	AL101	MONTOYA T	3.30	1.0	M	0530P-0840P
------	-----	-------	-----------	------	-----	---	-------------

**MUS 9B Guitar**

Advisory: Music 9A; students must provide their own guitars.

Transferable: CSU; UC; GAV-GE: C1

An introduction to playing the guitar. Basic staff notation, correct fingering and chord arpeggios are covered. Emphasis is also placed on developing musical listening skills. Students must provide their own guitars. May be repeated once for credit.

6151	LAB	AL101	MONTOYA T	3.30	1.0	M	0600P-0910P
------	-----	-------	-----------	------	-----	---	-------------

**MUS 12 Vocal Ensemble**

Transferable: CSU; UC; GAV-GE: C1

The day Vocal Ensemble will focus on individual and group performance of popular and alternative commercial music, and will rehearse and perform with a backup band. The evening Vocal Ensemble will study, rehearse and perform choral music in a broad spectrum of musical genre and styles. Included will be the study of vocal and rehearsal techniques as they relate to ensemble performance. Course may be repeated three times for credit.

4699	L/L	AL101	JUNCKER A	4.40	2.0	MW	1255P-0300P
------	-----	-------	-----------	------	-----	----	-------------

6152	L/L	GHS	ROBB P	4.40	2.0	Tu	0630P-0940P 67
See Footnote: Above class meets at the Gilroy High School music room							

Sect. Type Room Instructor Hrs. Units Days Begin-End Footnotes

**MUS 13 Concert Choir**

**Advisory:** Previous choral experience is preferred but not required. The student should have the ability to match a given pitch.

**Transferable:** CSU; UC; GAV-GE: C1

The Concert Choir will study, rehearse and perform choral music from the 15th century to the present in a variety of musical styles with emphasis on the larger choral works and their preparation for public concert. Course may be repeated three times for credit.

6153	L/L	GHS	ROBB P	4.40	2.0	Tu&1	0630P-0940P	67
See Footnote: Above class meets at the Gilroy High School music room								

**MUS 14A Instrumental Ensemble**

**Transferable:** CSU; GAV-GE: C1

Instruction for the experienced musician with emphasis on the study and performance of a wide variety of musical styles from Renaissance to 20th century music for traditional ensembles, and extensive consideration of contemporary commercial and alternative repertoire, and performance techniques for popular ensembles.

4700	L/L	AL101	MARQUES A	4.40	2.0	MW	1255P-0300P	
6154	L/L	SOLB7	QUARTUCCIO A	4.40	2.0	W&1	0640P-0950P	

**MUS 14B Instrumental Ensemble**

**Transferable:** CSU; GAV-GE: C1

Instruction for the experienced musician with emphasis on the study and performance of a wide variety of musical styles from Renaissance to 20th century music for traditional ensembles, and extensive consideration of contemporary commercial and alternative repertoire, and performance techniques for popular ensembles.

4701	L/L	AL101	MARQUES A	4.40	2.0	MW	1255P-0300P	
6155	L/L	SOLB7	QUARTUCCIO A	4.40	2.0	W&1	0640P-0950P	

**MUS 14C Instrumental Ensemble**

**Transferable:** CSU; GAV-GE: C1

Instruction for the experienced musician with emphasis on the study and performance of a wide variety of musical styles from Renaissance to 20th century music for traditional ensembles, and extensive consideration of contemporary commercial and alternative repertoire, and performance techniques for popular ensembles.

4702	L/L	AL101	MARQUES A	4.40	2.0	MW	1255P-0300P	
6156	L/L	SOLB7	QUARTUCCIO A	4.40	2.0	W&1	0640P-0950P	

**MUS 14D Instrumental Ensemble**

**Transferable:** CSU; GAV-GE: C1

Instruction for the experienced musician with emphasis on the study and performance of a wide variety of musical styles from Renaissance to 20th century music for traditional ensembles, and extensive consideration of contemporary commercial and alternative repertoire, and performance techniques for popular ensembles.

4703	L/L	AL101	MARQUES A	4.40	2.0	MW	1255P-0300P	
6157	L/L	SOLB7	QUARTUCCIO A	4.40	2.0	W&1	0640P-0950P	

**MUS 21 Electronic Music/Sound Design**

**Advisory:** Eligible for English 250, 260 and Mathematics 205.

**Transferable:** CSU; GAV-GE: C1

Fundamentals of electronic music synthesis using computers. Midi sequencing, digital sound processing, sampling, digital multi-track recording utilizing the college's state of the art midi studio. May be repeated three times for credit.

4704	L/L	LI128	JUNCKER A	3.40	3.0	TuTh&2.3	1120A-1245P	
------	-----	-------	-----------	------	-----	----------	-------------	--



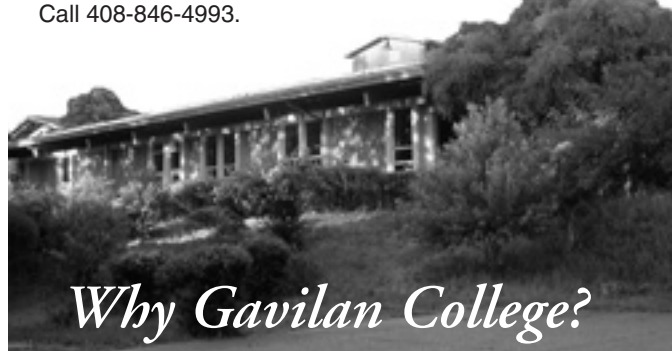
*The most fun you'll ever have in a class!*

**MUS 12  
Vocal Ensemble**

**MUS 14A  
Instrumental Ensemble**

- Play:
- Rock & Roll
  - Jazz
  - Blues
  - Top Hits
  - Classics
  - Your original songs!

Arrange a personal tour!  
Call 408-846-4993.



*Why Gavilan College?*

- Complete first two years of college coursework
- Easy transfer to UC, CSU and private universities
- Transfer agreements with UC, CSU and private universities
- Excellent faculty/helpful staff
- Small classes
- Beautiful campus
- No Silicon Valley commute
- Close to home
- Affordable

**Footnotes contain valuable information pertaining to your class selection. Footnotes follow class listings.**

Sect. Type Room Instructor Hrs. Units Days Begin-End Footnotes

**MUS 22 Field Work and Service**

**Required:** Learning contracts must be filled out and signed by the student and the supervising instructor.

**Transferable:** CSU

Supervised field work within the college and with local agencies. Students serve in useful group activities in leadership roles prescribed for them by faculty or community agencies. A maximum of six units may be completed. This is a credit/no credit course.

4705	FEX	GHS	ROBB P	3.40	1.0	DHR	0000-0000	21	67
See Footnote: Above class meets at the Gilroy High School music room.									
4706	FEX	AL101	QUARTUCCIO A	3.40	1.0	DHR	0000-0000	21	

**MUS 23 Independent Study**

**Required:** The study outline prepared by the student and the instructor must be filed with the department and the dean.

**Transferable:** CSU

Designed to afford selected students specialized opportunities for exploring areas at the independent study level. The courses may involve extensive library work, research in the community, or special projects. May be repeated until six units of credit are accrued. This course has the option of a letter grade or credit/no credit.

4707	IND	TH130	MELLO S	3.40	1.0	DHR	0000-0000	22	
4708	IND	GHS	ROBB P	3.40	1.0	DHR	0000-0000	22	67
See Footnote: Above class meets at the Gilroy High School music room.									
4709	IND	AL101	QUARTUCCIO A	3.40	1.0	DHR	0000-0000	22	
4710	IND	TH130	JUNCKER A	3.40	1.0	DHR	0000-0000	22	
4711	IND	AL102	JUNCKER A	6.80	2.0	DHR	0000-0000	22	
4712	IND	AL101	PRUITT N	3.40	1.0	DHR	0000-0000	22	
4713	IND	AL101	PRUITT N	6.80	2.0	DHR	0000-0000	22	
4714	IND	TH130	AMIRKHANIAN	3.40	1.0	DHR	0000-0000	22	
4715	IND	TH130	AMIRKHANIAN	6.80	2.0	DHR	0000-0000	22	
6158	IND	AL101	MONTOYA T	3.40	1.0	M&3.4	0600P-0850P	22	

**MUS 26 Symphony**

**Advisory:** Demonstrated proficiency on individual's instrument and ability to read music.

**Transferable:** CSU; UC; GAV-GE: C1

Study and performance of orchestral literature. Individual and sectional skills development. Perform in public concerts each semester. May be repeated until a maximum of 8 units are accrued.

6159	L/L	SOLB7	QUARTUCCIO A	4.40	2.0	W&1	0640P-0950P		
------	-----	-------	--------------	------	-----	-----	-------------	--	--

**MUS 98 Special Topics**

**Transferable:** CSU; GAV-GE: C1

Special topics courses examine current problems or issues of interest to students within a specific discipline area. For topical content information, consult with appropriate department chairperson. For transfer status, check with a counselor. This course may have the option of a letter grade or credit/no credit.

6160	LEC	GHS	ROBB P	1.00	1.0	Tu	0730P-0945P	67	
See Footnote: Above class meets at the Gilroy High School music room.									
6161	LEC	AL101	QUARTUCCIO A	1.00	1.0	W	0730P-0945P		

**Nursing: see Allied Health**

**Nutrition: see Biological Sciences**

**Performing Arts: see Theatre Arts (THEA)**

Sect. Type Room Instructor Hrs. Units Days Begin-End Footnotes

**PHILOSOPHY**

**PHIL 1 Introduction to Philosophy**

**Advisory:** Eligible for English 1A.

**Transferable:** CSU; UC; CSU-GE: C2; IGETC: 3B; GAV-GE: C2; CAN: PHIL 2

Philosophy 1 is intended as a survey of the major areas and traditions of philosophy. The course examines central and significant questions about the meaning of life, who determines what is morally right or wrong, the ideal society, the various notions social justice, what is reality, and many other ideas. In pursuing these questions, students will be asked to read texts from writers around the world, both contemporary and ancient, discuss current events, and apply 'theory' to movies such as "The Matrix" trilogy, novels, and any other relevant application of the student's own choice.

4776	LEC	CH102	HODGE E	3.40	3.0	TuTh	1255P-0220P		
------	-----	-------	---------	------	-----	------	-------------	--	--

**PHIL 2 Logic**

**Advisory:** Eligible for English 1A.

**Transferable:** CSU; UC; CSU-GE: A3; GAV-GE: C2; CAN: PHIL 6

Philosophy 2 is intended as a survey of the primary approaches to argumentation and what has been traditionally called 'correct' reasoning. Students will learn techniques of both deductive and inductive argumentation, basic symbolic logic, how to spot a fallacy, as well as how to apply these techniques to other aspects of their lives outside of the classroom. While logic is often quite formal, the goal is to see the practical application of this discipline. Students will become acquainted with the cultural variations to reasoning in addition to the standard Western focal approach.

4777	LEC	AR103	HODGE E	3.40	3.0	TuTh	0810A-0935A		
------	-----	-------	---------	------	-----	------	-------------	--	--

6168	LEC	HOL5	JOHNSTON M	3.40	3.0	W	0600P-0910P		
Above class meets at the Hollister Briggs site									

**PHIL 6A Comparative Religions**

**Advisory:** Eligible for English 1A.

**Transferable:** CSU; UC; CSU-GE: C2; IGETC: 3B; GAV-GE: C2, F

Religion is a topic that ignites controversy -- most societies engage in religious practices, believe strongly in that tradition, and find a sense of identity within it. The controversy arises when differences are misunderstood, misrepresented, or placed in a hierarchy of assumed supremacy of one religion as superior to others. In this class, students explore the underlying commonality of various religious traditions, explore the uniqueness of the religions with which they are unfamiliar, and learn to see that diversity among beliefs doesn't have to create hostility. Students will explore religions from Indigenous Peoples throughout the world, East Asia (e.g. India), China, the Middle East, as well as some more recent trends in religion.

4780	LEC	HU103	HODGE E	3.40	3.0	MW	1255P-0220P		
------	-----	-------	---------	------	-----	----	-------------	--	--

**PHIL 4 Critical Thinking and Writing**

**Prerequisite:** English 1A

**Transferable:** CSU; UC; CSU-GE: A3; IGETC: 1B; GAV-GE: C2

This course is designed to introduce the relationship between critical thinking and critical writing in a way that will be both enjoyable to the student and helpful in other aspects of life. The student will learn techniques of critical thinking, paying close attention to the current events, movies and popular media, music lyrics, as well as the textbook. Students will learn to identify deductive and inductive arguments and be able to evaluate their strength, create a strong argument of their own on a given topic, as well become experts in the area of critical analysis. The goal is to enable students to become strong, well informed, articulate members of the community as well as individuals with an empowered sense of self as an agent of change.

4778	LEC	SS111	HODGE E	3.40	3.0	MW	0945A-1110A		
------	-----	-------	---------	------	-----	----	-------------	--	--

4779	LEC	AR103	HODGE E	3.40	3.0	TuTh	0945A-1110A		
------	-----	-------	---------	------	-----	------	-------------	--	--



Sect. Type Room Instructor Hrs. Units Days Begin-End Footnotes

**PHIL 6A Comparative Religions**

**Advisory:** Eligible for English 1A.

**Transferable:** CSU; UC; CSU-GE: C2; IGETC: 3B; GAV-GE: C2, F

Religion is a topic that ignites controversy -- most societies engage in religious practices, believe strongly in that tradition, and find a sense of identity within it. The controversy arises when differences are misunderstood, misrepresented, or placed in a hierarchy of assumed supremacy of one religion as superior to others. In this class, students explore the underlying commonality of various religious traditions, explore the uniqueness of the religions with which they are unfamiliar, and learn to see that diversity among beliefs doesn't have to create hostility. Students will explore religions from Indigenous Peoples throughout the world, East Asia (e.g. India), China, the Middle East, as well as some more recent trends in religion.

4780 LEC HU103 HODGE E 3.40 3.0 MW 1255P-0220P

**PHIL 23 Independent Study**

**Required:** The study outline prepared by the student and the instructor must be filed with the department and the dean.

**Transferable:** CSU

Designed to afford selected students specialized opportunities for exploring areas at the independent study level. The courses may involve extensive library work, research in the community, or special projects. May be repeated until six units of credit are accrued. This course has the option of a letter grade or credit/no credit.

4781 IND SS106 HODGE E 3.40 1.0 DHR 0000-0000

**Photography: see Art, CSIS or Digital Media**

**PHYSICAL EDUCATION: ACADEMIC**

**PE 6 Games and Rhythms for Children**

**Advisory:** Eligible for English 250 and English 260.

**Transferable:** CSU; GAV-GE: E1

Nature, function and organization of physical activities for the pre-school and elementary school age child. Emphasis is given to the understanding of psychomotor development and spatial awareness. Designed for those planning to work with children. Also listed as Child Development 6. This course has the option of a letter grade or credit/no credit.

4716 LEC APE120 DODD S 3.40 3.0 TuTh 0810A-0935A 25

**PHYSICAL EDUCATION: ACTIVITIES**

**PE 16 Swimming**

**Transferable:** CSU; UC; CSU-GE: E1; GAV-GE: E1

Coeducational activity designed for all skill levels. The course teaches the techniques of a variety of strokes and includes conditioning activities. Instruction is tailored to meet individual and group needs. May be repeated three times for credit. This course has the option of a letter grade or credit/no credit.

4717 LAB GY100P DODD S 3.40 1.0 MW 1255P-0220P

4718 LAB GY100P DODD S 3.40 .5 MW 1255P-0220P 11  
03/26/07 - 05/23/07

**PE 17 Golf**

**Transferable:** CSU; UC; CSU-GE: E1; GAV-GE: E1

Coeducational activity designed for all skill levels; fundamentals, techniques, rules and etiquette of golf. May be repeated three times for credit. This course has the option of a letter grade or credit/no credit.

4719 LAB GY200C ANDRADE N 3.40 1.0 MW 1120A-1245P 49

4720 LAB GY200C ANDRADE N 3.40 .5 MW 1120A-1245P 11 49  
03/26/07 - 05/23/07

6162 LAB GY200C KRAUSE S 3.40 .5 S 0900A-1200P 11 43 49  
03/31/07 - 05/19/07

**PE 19**

**BADMINTON is back!**

**PE 73**

**FITNESS THROUGH DANCE**



**PE 24 Individualized Weight Training**  
**PE 64 Cardiovascular Fitness**

**Spring Semester Fitness Center Lab Hours**

Day	MWF	7:00 am - 2:00 pm
	TuTh	9:30 am - 1:30 pm
Eve.	MTuWTh	4:30 pm - 6:30 pm

- Section hours by arrangement
- ✦ 1.7 to 3.4 weekly hours
  - ✦ .5 or 1.0 unit
  - ✦ Fitness Center (GYM 123)



**Open Lab Class Format**  
Designed for individualized strength or cardiovascular fitness programs in an open lab setting using a variety of exercise equipment.

**Students should check in the first week of the semester during lab hours.**

Students should be aware that there are inherent risks involved in any physical exercise. Students are strongly advised to consult a physician prior to participating in any physical education activity.

**PE Activities** Classes can be taken for letter grade or CR/NC.

Sect. Type Room Instructor Hrs. Units Days Begin-End Footnotes

**PE 19 Badminton**

Transferable: CSU; UC; CSU-GE: E1; GAV-GE: E1

Coeducational activity designed for beginning and intermediate badminton students; rules, etiquette and fundamentals of badminton. May be repeated three times for credit. This course has the option of a letter grade or credit/no credit.

4721 LAB GY131G LANGOJ 3.40 1.0 F 1040A-0140P

**PE 20 Bowling**

Transferable: CSU; UC; CSU-GE: E1; GAV-GE: E1

Coeducational activity designed for beginning and intermediate bowlers; fundamentals and techniques of bowling. Scoring, bowling etiquette, terminology and team bowling are included. May be repeated three times for credit. This course has the option of a letter grade or credit/no credit.

4722 LAB GIBOWL LANGOJ 3.40 1.0 TuTh 0810A-0935A 62  
See Footnote: Above class meets Off Campus

**PE 21 Volleyball**

Transferable: CSU; UC; CSU-GE: E1; GAV-GE: E1

Coeducational activity designed for beginning and intermediate volleyball students; rules, strategy and fundamentals of volleyball. May be repeated three times for credit. This course has the option of a letter grade or credit/no credit.

4723 LAB GY131G STAFF 3.40 1.0 MW 1255P-0220P

**PE 23 Independent Study**

Required: The study outline prepared by the student and the instructor must be filed with the department and the dean.

Transferable: CSU

Designed to afford selected students specialized opportunities for exploring areas at the independent study level. The courses may involve extensive library work, research in the community, or special projects. May be repeated until six units of credit are accrued. This course has the option of a letter grade or credit/no credit.

4724 IND GY116 DODD S 6.40 2.0 DHR 0000-0000 22

**PE 24 Individualized Weight Training**

Transferable: CSU; UC; CSU-GE: E1; GAV-GE: E1

An open laboratory for those who desire an individualized strength program using exercise machines and free weights. May be repeated three times for credit. This course has the option of a letter grade or credit/no credit.

4725 LAB GY123 DODD S 3.40 1.0 day-time see ad 87

4726 LAB GY123 DODD S 1.70 .5 day-time see ad 87

**PE 25 Soccer**

Transferable: CSU; UC; CSU-GE: E1; GAV-GE: E1

Co-educational activity designed for all skill levels. Fundamentals, strategy and rules of the game are included. May be repeated three times for credit. This course has the option of a letter grade or credit/no credit.

4727 LAB GY131G ESPINOZA J 3.40 1.0 MW 0810A-0935A

**PE 27 Basketball**

Transferable: CSU; UC; CSU-GE: E1; GAV-GE: E1

Co-educational activity designed for all skill levels. Fundamentals, strategy and rules of the game are included. May be repeated three times for credit. This course has the option of a letter grade or credit/no credit.

4728 LAB GY131G ADDISON T 3.40 .5 TuTh 0230P-0430P 11  
03/27/07 - 05/24/07

Sect. Type Room Instructor Hrs. Units Days Begin-End Footnotes

**PE 39 Fencing**

Transferable: CSU; UC; CSU-GE: E1; GAV-GE: E1

This course will explore the offensive and defensive fencing skills with a foil. May be repeated three times credit. This course has the option of a letter grade or credit/no credit.

6163 LAB GY131G DECESARE J 3.40 1.0 M 0630P-0940P 44

**PE 44 Aerobics**

Transferable: CSU; UC; CSU-GE: E1; GAV-GE: E1

A program of aerobic fitness. Includes various forms of exercise to improve health, heart, and body composition. May be repeated three times for credit. This course has the option of a letter grade or credit/no credit.

4744 LAB GY131G THOMPSON N 3.40 1.0 MW 1120A-1245P

**PE 46 Agility and Motor Development**

Transferable: CSU; UC; CSU-GE: E1; GAV-GE: E1

An activity class designed to improve and increase agility and motor development through various exercise and exercise programs. May be repeated three times for credit. This course has the option of a letter grade or credit/no credit.

4745 LAB GY131G LANGOJ 3.40 1.0 MTuWTh 0310P-0400P

4746 LAB GY131G LANGOJ 3.40 .5 MTuWTh 0310P-0400P 11  
03/19/07 - 05/24/07

**PE 61 Swim for Fitness**

Transferable: CSU; UC; CSU-GE: E1; GAV-GE: E1

Designed to develop endurance and swimming skills in order to maintain good cardiovascular/physical fitness. Intermediate swimming ability recommended. May be repeated three times for credit. This course has the option of a letter grade or credit/no credit.

6164 LAB GY100P DODD S 3.40 .5 TuTh 0515P-0640P 11  
03/20/07 - 05/24/07

**PE 62 Yoga**

Transferable: CSU; UC; CSU-GE: E1; GAV-GE: E1

Co-educational activity designed for beginning yoga students. A program designed to improve flexibility and reduce stress, by learning a series of postures and focusing on proper breathing techniques. May be repeated three times for credit. This course has the option of a letter grade or credit/no credit.

4747 LAB APE101 MUSCARI D 3.40 1.0 TuTh 1255P-0220P

6165 LAB MHG10 WATSON M 3.40 1.0 M W 0500P-0625P  
Above class meets at Morgan Hill Community site

6167 LAB VET218 MUSCARI D 3.40 1.0 TuTh 0500P-0625P 41  
See Footnote: Above class meets at the Veteran's Memorial Bldg., Hollister

**PE 64 Individualized Cardiovascular Fitness**

Transferable: CSU; UC; CSU-GE: E1; GAV-GE: E1

A fitness program which develops cardiovascular endurance through an individualized open lab format. May be repeated three times for credit. This course has the option of a letter grade or credit/no credit.

4748 LAB GY123 DODD S 3.40 1.0 day-time see ad 87

4749 LAB GY123 DODD S 1.70 .5 day-time see ad 87

**PE 70 Pilates**

Transferable: CSU; UC; CSU-GE: E1; GAV-GE: E1

This class utilizes the Pilates exercise system focused on improving flexibility and strength for the total body through a series of controlled movements. May be repeated three times for credit. This course has the option of a letter grade or credit/no credit.

4751 LAB APE101 MUSCARI D 3.40 1.0 MW 1255P-0220P

Sect. Type Room Instructor Hrs. Units Days Begin-End Footnotes

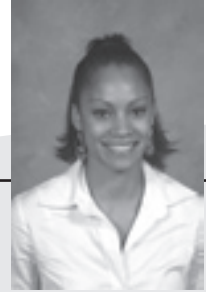


**PE 73 Fitness Through Dance**

Transferable: CSU; UC; CSU-GE: E1; GAV-GE: E1

Conditioning the body through the use of various dances and/or dance steps. This course is designed to strengthen and tone the body, assist in weight loss, and increase endurance. May be repeated three times for credit. This course has the option of a letter grade or credit/no credit.

4752 LAB APE101 WAGGONER K 3.40 1.0 TuTh 1120A-1245P



**ALUMNI** *Profile*

**PHYSICAL EDUCATION: ADAPTED**

**PE 34 Adapted Aquatic Exercise**

Transferable: CSU; UC; CSU-GE: E1; GAV-GE: E1

Designed to help individuals who by the nature of their disability such as wheelchair use, back injury, cardiovascular impairment, multiple sclerosis or other disabling condition require a specific aquatic exercise program that will contribute to their physical well-being. May be repeated as necessary based on measurable progress as documented in the student's educational contract. This course has the option of a letter grade or credit/no credit.

4729 LAB GY100P ELLIS D 3.40 1.0 MW 0810A-0935A 90 75

4730 LAB GY100P ELLIS D 3.40 1.0 MW 1120A-1245P 90 75  
CRETIN A

4731 LAB GY100P ELLIS D 3.40 1.0 TuTh 1120A-1245P 90 75  
CRETIN A

**PE 35 Adapted Swimming for Total Fitness**

Transferable: CSU; UC; CSU-GE: E1; GAV-GE: E1

An individualized program of activities designed for students with physical disabilities to improve flexibility and range-of-motion, increase joint movement, improve circulation, and improve control of body movement through water adjustment and activities. Develops an appreciation of physical activity as a regular planned contribution to one's overall well-being. May be repeated as necessary based on measurable progress as documented in the student's educational contract. This course has the option of a letter grade or credit/no credit.

4732 LAB GY100P ELLIS D 3.40 1.0 MW 0810A-0935A 90 75

4733 LAB GY100P ELLIS D 3.40 1.0 TuTh 1120A-1245P 90 75  
CRETIN A

4734 LAB GY100P ELLIS D 3.40 1.0 MW 1255P-0220P 90 75

**PE 36 Adapted Physical Education**

Transferable: CSU; UC; CSU-GE: E1; GAV-GE: E1

An individualized program of adaptive physical education activities designed to meet the needs of students with physical disabilities. Develops an appreciation of physical activity as a regular planned contribution to one's overall well-being. May be repeated as necessary based on measurable progress as documented in the student's educational contract. This course has the option of a letter grade or credit/no credit.

4735 LAB APE108 ELLIS D 3.40 1.0 TuTh 0945A-1110A 90 75  
APE120 ELLIS D  
APE121 ELLIS D

4736 LAB APE108 ELLIS D 3.40 1.0 MW 0945A-1120A 90 75  
APE120 ELLIS D  
APE121 ELLIS D

4737 LAB APE108 ELLIS D 3.40 1.0 MW 1120A-1245P 90 75

4738 LAB APE108 ELLIS D 3.40 1.0 TuTh 1255P-0220P 90 75  
APE120 ELLIS D  
APE121 ELLIS D

**Sabrina Murphy:**

My freshmen year of college I attended a private 4- year school. The college was not worth a \$30,000 tuition. I wasn't crazy about my decision to go to Gavilan College because I didn't think it would be possible for me to get picked up by a Division I school for basketball. Once I started going to Gavilan college I realized how great it was. It was so close to home and inexpensive. I was receiving better education at Gavilan College than I had at the 4-year school.

I was a member of the women's basketball team at Gavilan College and played well enough to receive an honorable mention from the league. I averaged 13 points per game and was invited to attend the Sophomore Showcase in San Diego. This event has the best players in California and they play against each other on teams in front of scouts from different universities across the U.S.

I graduated Gavilan College with my AA in Liberal Studies and was able to continue my education at San Jose State where I was able to also be a member of the women's basketball team. My junior year at state I walked on to the team and commuted back and forth from my home in Hollister. My senior year I received a full scholarship for basketball and I graduated in May with a BA in Psychology and a minor in Sociology.

Gavilan College helped me save money and gave me the same (if not better) education than a private institution. If I had to redo my education, I would have attended Gavilan College for two years instead of one. My advice to students now (since I occasionally substitute teach and coach the girls team at Anchor Point Christian School in Gilroy) is to go to a junior college like Gavilan College first to save money. There is no point in paying astronomical amounts of money for the first two years of college.

**BACH TO BLUES**  
**March 9, 2007**  
 7 pm in the Gavilan College Theater

Performers include:  
 Nate Pruitt  
 John Garcia  
 Maria Amirkhanian  
 Albert Marques  
 Art Juncker with the Gavilan Ensemble  
 Candace Fazio  
 The Marian Filice Piano Competition winner

Theatre Arts Box Office: 408-846-4973

Presented by Gavilan College in association with  
 South Valley Symphony

Footnotes contain valuable information pertaining to your class selection. Footnotes follow class listings.

Sect. Type Room Instructor Hrs. Units Days Begin-End Footnotes

Sect. Type Room Instructor Hrs. Units Days Begin-End Footnotes

**PE 38 Adapted Cardiovascular Conditioning & Training**

Transferable: CSU; UC; CSU-GE: E1; GAV-GE: E1

Prescribed exercises in weight training, stretching and cardiovascular conditioning for those individuals that have been disabled through stroke, cardiovascular accident, arthritis, multiple sclerosis, or other condition. May be repeated as necessary based on measurable progress as documented in the student's educational contract. This course has the option of a letter grade or credit/no credit.

4740	LAB	APE108 APE120 APE121	ELLIS D ELLIS D ELLIS D	3.40	1.0	MW	0945A-1110A	90 75
4741	LAB	APE108 APE120 APE121	ELLIS D ELLIS D ELLIS D	3.40	1.0	TuTh	0945A-1110A	90 75
4742	LAB	APE108 APE120 APE121	ELLIS D ELLIS D ELLIS D	3.40	1.0	MW	1120A-1245P	90 75
4743	LAB	APE108 APE120 APE121	ELLIS D ELLIS D ELLIS D	3.40	1.0	TuTh	1255P-0220P	90 75

**PE 534 Adapted Aquatic Exercise**

Transferable: No

Designed to help individuals who by the nature of their disability such as wheelchair use, back injury, cardiovascular impairment, multiple sclerosis or other disabling condition require a specific aquatic exercise program that will contribute to their physical well being. May be repeated as necessary based on measurable progress as documented in the student's educational contract. This is a credit/no credit course.

4753	LAB	GY100P	ELLIS D	3.40	1.0	MW	0810A-0935A	90 75
4755	LAB	GY100P	ELLIS D	3.40	1.0	MW	1120A-1245P	90 75
4756	LAB	GY100P	ELLIS D CRETIN A	3.40	1.0	TuTh	1120A-1245P	90 75

**PE 535 Adapted Swimming for Total Fitness**

Transferable: No

An individualized program of activities designed for students with physical disabilities to improve flexibility and range-of-motion, increase joint movement, improve circulation, and improve control of body movement through water adjustment and activities. Develops an appreciation of physical activity as a regular planned contribution to one's overall well-being. May be repeated as necessary based on measurable progress as documented in the student's educational contract. This course is credit/no credit.

4757	LAB	GY100P	ELLIS D	3.40	1.0	MW	0810A-0935A	90 75
4758	LAB	GY100P	ELLIS D CRETIN A	3.40	1.0	TuTh	1120A-1245P	90 75
4759	LAB	GY100P	ELLIS D	3.40	1.0	MW	1255P-0220P	90 75

**PE 536 Adapted Physical Education**

Transferable: No

An individualized program of adaptive physical education activities designed to meet the needs of students with physical disabilities. Develops an appreciation of physical activity as a regular planned contribution to one's overall well-being. May be repeated as necessary based on measurable progress as documented in the student's educational contract. This is a credit/no credit course.

4761	LAB	LOADCS	CRETIN A	3.40	1.0	MW	0930A-1055A	70 90 75
See Footnote: Above class meets Off Campus								
4762	LAB	APE108 APE120 APE121	ELLIS D ELLIS D ELLIS D	3.40	1.0	MW	0945A-1110A	90 75
4763	LAB	APE108 APE120 APE121	ELLIS D ELLIS D ELLIS D	3.40	1.0	TuTh	0945A-1110A	90 75
4764	LAB	HOLLCC	CRETIN A	3.40	1.0	MW	1120A-1245P	68 90 75
See Footnote: Above class meets Off Campus								
4765	LAB	APE108	ELLIS D	3.40	1.0	MW	1120A-1245P	90 75
4766	LAB	APE108 APE120 APE121	ELLIS D ELLIS D ELLIS D	3.40	1.0	TuTh	1255P-0220P	90 75

**PE 538 Adapted Cardiovascular Conditioning & Training**

Transferable: No

Prescribed exercises in weight training, stretching and cardiovascular conditioning for those individuals that have been disabled through stroke, cardiovascular accident, arthritis, multiple sclerosis, or other condition. May be repeated as necessary based on measurable progress as documented in the student's educational contract. This is a credit/no credit course.

4767	LAB	APE108 APE120 APE121	ELLIS D ELLIS D ELLIS D	3.40	1.0	MW	0945A-1110A	90 75
4768	LAB	APE108 APE120 APE121	ELLIS D ELLIS D ELLIS D	3.40	1.0	TuTh	0945A-1110A	90 75
4769	LAB	LOADCS	CRETIN A	3.40	1.0	TuTh	0945A-1110A	70 75
See Footnote: Above class meets Off Campus								
4770	LAB	APE108 APE120 APE121	ELLIS D ELLIS D ELLIS D	3.40	1.0	MW	1120A-1245P	90 75
4771	LAB	APE108 APE120 APE121	ELLIS D ELLIS D ELLIS D	3.40	1.0	TuTh	1255P-0220P	90 75

**PE 547 Back Rehabilitation**

Advisory: Doctor, physical therapist, and/or chiropractor referral required for entrance into class.

Transferable: No

A course designed for the individuals with back injuries which last several months or longer. The course is geared toward education, motivation, and a supervised program geared toward self-improvement and prevention for the back's well-being. The class will emphasize a wide variety of stretching and relaxation techniques as well as breathing exercises and nutritional practices for stress reduction and its relationship to one's back health as well as total wellness. This class is not designed to replace physical therapy, but to complement it and to continue once physical therapy has been terminated. This class is offered on an open/entry open/exit basis.

4772	LAB	LOADCS	MARINGER J	1.00	1.0	F	1000A-1100A	70 31 75
------	-----	--------	------------	------	-----	---	-------------	----------

**Your educational plan:**

You are expected to take the responsibility for scheduling an appointment with a counselor, preferably at least once a semester. The purpose of this appointment is to develop, review and update your educational plan to ensure that you are taking the appropriate courses to meet your educational goal.



Sect. Type Room Instructor Hrs. Units Days Begin-End Footnotes

## INTERCOLLEGIATE ATHLETICS

**ATH 35 Basketball****Transferable:** CSU; UC; CSU-GE: E1; GAV-GE: E1

This course provides practice and competition in intercollegiate basketball. May be repeated three times for credit. This course has the option of a letter grade or credit/no credit.

4130 LAB GY131G ADDISON T 10.00 1.0 DAILY 0230P-0430P 11  
01/31/07 - 03/09/07**ATH 36 Golf****Transferable:** CSU; UC; CSU-GE: E1; GAV-GE: E1

This course provides practice and competition in intercollegiate golf. May be repeated three times for credit. This course has the option of a letter grade or credit/no credit.

4131 LAB GY200C KRAUSE S 10.00 2.0 DAILY 0230P-0430P

**ATH 38 Baseball****Transferable:** CSU; UC; CSU-GE: E1; GAV-GE: E1

This course provides practice and competition in intercollegiate baseball for men. May be repeated three times for credit. This course has the option of a letter grade or credit/no credit.

4132 LAB GY131G ANDRADE N 10.00 2.0 DAILY 0230P-0430P

**ATH 45 Softball****Transferable:** CSU; UC; CSU-GE: E1; GAV-GE: E1

This course provides practice and competition in intercollegiate softball for women. May be repeated three times for credit. This course has the option of a letter grade or credit/no credit.

4133 LAB GY131G THOMPSON N 10.00 2.0 DAILY 0230P-0430P

## PHYSICAL SCIENCE

**PSCI 1 Principles of Physical Science****Advisory:** Mathematics 205 and eligible for English 250 and 260.**Transferable:** CSU; UC; CSU-GE: B1; IGETC: 5A; GAV-GE: B1

An introduction to the physical sciences for the non-science major. Attention is focused on fundamental laws of nature, their development and relation to the physical world.

6170 LEC HOL1 SNYDER J 3.40 3.0 Tu 0630P-0940P  
Above class meets at the Hollister Briggs site**PSCI 2 Introduction to Meteorology****Advisory:** MATH 205.**Transferable:** CSU; UC; CSU-GE: B1; IGETC: 5A; GAV-GE: B1

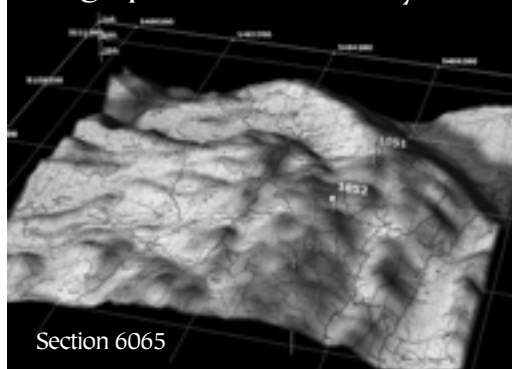
An introductory course in Meteorology that is both descriptive and analytical on the physical principles affecting the earth's weather. Topics covered include the nature of the atmosphere, solar energy, heat, temperature, pressure, stability, moisture, wind, storms, severe weather and forecasting. The course introduces climatology as a scientific study and will look at the earth's climatic history, current research in climate modeling and the possibility of global climate change.

4796 ONLINE VANTUYLA 3.40 3.0 DHR 0000-0000

This online class will be delivered entirely over the internet. After enrolling, start the class by going to <http://www.gavilan.edu/disted/>, click on your class link, and email the instructor at [avantuyla@gavilan.edu](mailto:avantuyla@gavilan.edu). Students who have not begun the class or contacted the instructor by 5 pm on Monday, February 5 will be dropped from the class.

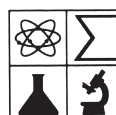
## CSIS 61

## Geographic Information Systems



What do Administration of Justice, Biology, Business, Ecology, Economics, Geography, Geology, History, Landscaping, Public Health, Urban Planning, and Zoology have in common? **GIS!**

Offered Thursday evenings, 6-9:50 pm  
in BU III (on the Gilroy main campus)

**MESA**

MATHEMATICS • ENGINEERING • SCIENCE ACHIEVEMENT

- ◆ Are you a math based major? (BIO, CSIS, Architecture, etc.)
- ◆ Do you want to transfer to a 4-year university?
- ◆ Do you have financial need? You may be eligible!

Gavilan's MESA Program is now accepting applications. MESA students are entitled to workshops, academic advising, field trips, tutoring and more!

For more information call 408-848-4887 or visit the MESA Study Center in PH 105.

◆ [www.gavilan.edu/MESA](http://www.gavilan.edu/MESA) ◆

**MATH ♦ ENGINEERING ♦ SCIENCE MAJORS*****PLANNING TO TRANSFER?***

Admission for these majors is very competitive

4-year universities stress preparation for the major over completion of general education major.

High-unit majors do not need to fulfill all general education requirements

You do not need to get an AA or AS degree to transfer

You should plan your sequential courses early.

**assist**

can help you plan your courses to complete major preparation prior to transfer. Go to [www.assist.org](http://www.assist.org) and see a counselor to develop an educational plan.

Sect. Type Room Instructor Hrs. Units Days Begin-End Footnotes

**PHYSICS**

**PHYS 1 Introduction to Physics**

**Advisory:** Mathematics 205.

**Transferable:** CSU; UC; CSU-GE: B1, B3; IGETC: 5A; GAV-GE: B1, B3

This course is an introduction to the fundamental physical principles that control the world around us. Students will explore the fundamental principles of physics, their historical development, their application to everyday phenomena, and their impact upon political, social, and environmental issues. Laboratory exercises will explore the everyday world.

4782 L/L PH102 LEE R 6.80 4.0 TuTh 0945A-1250P 1

**PHYS 2B General Physics**

**Prerequisite:** Physics 2A

**Advisory:** Eligible for English 250 and English 260

**Transferable:** CSU; UC; CSU-GE: B1, B3; IGETC: 5A; GAV-GE: B1, B3; CAN: PHYS 4, PHYS SEQ. A

An introduction to the principles of physics using algebra and trigonometry. Topics include electricity and magnetism, light and optics, modern physics, and an introduction to relativity.

4783 L/L PH102 LEE R 6.80 4.0 MW 1120A-1245P 1  
 LEE R F 1140A-1240P  
 LEE R W 0230P-0435P

**Physiology: see Biological Sciences**

**POLITICAL SCIENCE**

**POLS 1 Introduction to American Government**

**Advisory:** Eligible for English 250 and English 260.

**Transferable:** CSU; UC; CSU-GE: D8; IGETC: 4H, 7A; GAV-GE: D1, D2; CAN: GOVT 2

Explores the development of American political institutions and their utilization in dealing with issues arising at the international, national and state levels. Emphasis is placed on those problems which have defined our federal system of government. California government and appropriate state institutions will be included as a vital part of our federal system of government.

4784 LEC SS210 TURETZKY M 3.40 3.0 MW 0810A-0935A


4785 LEC SS210 TURETZKY M 3.40 3.0 TuTh 0810A-0935A

4786 LEC HOL1 KIERD 3.40 3.0 TuTh 0945A-1110A  
 Above class meets at the Hollister Briggs site

4787 LEC GHS STAFF 3.40 3.0 Tu 0310P-0620P 86

This class is part of the High Step program. It will be offered at Gilroy High School, room BE. This class is open to all students. For more information, see a Gavilan counselor.

4788 ONLINE TURETZKY M 3.40 3.0 DHR 0000-0000 38

 This online class will be delivered entirely over the internet. After enrolling, start the class by going to <http://www.gavilan.edu/disted/>, click on your class link, and email the instructor at [mturetzky@gavilan.edu](mailto:mturetzky@gavilan.edu). Students who have not begun the class or contacted the instructor by 5 pm on Monday, February 5 will be dropped from the class.

6169 LEC SS210 TURETZKY M 3.40 3.0 M 0630P-0940P

**POLS 3 Introduction to Comparative Politics**

**Advisory:** Eligible for English 250 and English 260.

**Transferable:** CSU; UC; CSU-GE: D8; IGETC: 4H; GAV-GE: D2, F

Comparative survey of political institutions and processes around the globe. Selected nations may include, but are not restricted to: the United Kingdom, France, Germany, Japan, Russia, India, Nigeria, and Mexico.

4789 LEC LI171 TURETZKY M 3.40 3.0 MW 0945A-1110A


Sect. Type Room Instructor Hrs. Units Days Begin-End Footnotes

**POLS 4 Introduction to International Relations**

**Transferable:** CSU; UC; CSU-GE: D8; IGETC: 4H; GAV-GE: D2, F

This course provides an introduction to key contemporary international problems and the means to analyze them. Major parts of the course cover such topics as war and peace, foreign policymaking, the international economy, and future trends in world politics.

4790 ONLINE TURETZKY M 3.0 DHR 0000-0000 13

 This hybrid lecture/online class will be delivered partially over the internet. See the online syllabus for details. <http://www.gavilan.edu/disted/>.

**POLS 6 Introduction to Conflict Resolution**

**Advisory:** English 250 and English 260.

**Transferable:** CSU; CSU-GE: D7; GAV-GE: D2

Introduction to Conflict Resolution introduces students to conflict resolution and mediation. Integrating theory and practice, students will assess core concepts about the causes and resolution of conflict, and will practice communication skills for conflict resolution. Students will examine how ethnicity, gender, and class affect power in conflict situations. They will be able to formulate appropriate conflict resolution strategies, and will develop and practice various basic co-mediation skills. This course has the option of a letter grade or credit/no credit. This course is also listed as AJ 6 and PSYC 6 and CMUN 6.

4791 LEC SS205 HALPER L 3.40 3.0 MW 0945A-1110A 25

**POLS 22 Field Work and Service**

**Required:** Learning contracts must be filled out and signed by the student and the supervising instructor.

**Transferable:** CSU

Supervised field work within the college and with local agencies. Students serve in useful group activities in leadership roles prescribed for them by faculty or community agencies. A maximum of six units may be completed. This is a credit/no credit course.

4792 FEX SS107 TURETZKY M 3.40 1.0 DHR 0000-0000 21

**POLS 23 Independent Study**

**Required:** The study outline prepared by the student and the instructor must be filed with the department and the dean.

**Transferable:** CSU

Designed to afford selected students specialized opportunities for exploring areas at the independent study level. The courses may involve extensive library work, research in the community, or special projects. May be repeated until six units of credit are accrued. This course has the option of a letter grade or credit/no credit.

4793 IND SS107 TURETZKY M 3.40 1.0 DHR 0000-0000 22

4794 IND SS107 TURETZKY M 6.40 2.0 DHR 0000-0000 22

**POLS 27 Contemporary Leadership**

**Advisory:** Eligible for English 250 and English 260.

**Transferable:** CSU; GAV-GE: E2

A cross-disciplinary approach to the theory and practice of leadership. Includes effective communication styles including issues related to gender and culture. Class includes topics on ethics, power, and how to run effective meetings including the use of parliamentary procedure. Skills directly applicable to work, personal and college environments. May be repeated for a maximum of 10 units. Also listed as PSYC 27.

4795 L/L LS101 STEWART J 4.60 3.0 TuTh&2 0810A-0930A 25