

Sect.	Type	Room	Instructor	Hrs.	Units	Days	Begin-End	Footnotes	Sect.	Type	Room	Instructor	Hrs.	Units	Days	Begin-End	Footnotes
-------	------	------	------------	------	-------	------	-----------	-----------	-------	------	------	------------	------	-------	------	-----------	-----------

LIBRARY

LIB 3 Internet and Information Competency

Advisory: Eligible for English 250 and 260.
Transferable: CSU

Research and evaluation skills using the Internet and other electronic resources, as well as traditional printed materials. This six-week course is also listed as CSIS 3. This course has the option of a letter grade or credit/no credit. May be repeated once for credit.

0526	LEC	ONLINE	MEADER S	3.00	1.0	DHR	0000-0000	11 25 38											

10/16/06 - 11/26/06 This online class will be delivered entirely over the internet. After enrolling, start the class by going to <http://www.gavilan.edu/disted/>, click on your class link, and email the instructor at smeader@gavilan.edu. Students who have not begun the class or contacted the instructor by 5 pm on the 3rd day of class will be dropped from the class.



LIB 6 Web Page Authoring I

Advisory: CSIS 1 or CSIS 2 or CSIS/LIB 3 advised.
Transferable: CSU; GAV-GE: E2

A introduction to using Hypertext Mark-Up Language (HTML) and Extensible HTML (XHTML) to create web pages which can be unloaded and displayed on the World Wide Web. Students will use HTML/XHTML to create web pages with text in various sizes and colors, links to other sites, background color or patterns, graphics, tables, and mailto links. Principles of design and color as they apply to screen presentations will be included. This course has the option a letter grade or credit/no credit. May be repeated three times for credit. Also listed as CSIS 6 and DM 6.

0527	LEC	ONLINE	VANTASSEL D	4.60	2.0	DHR	0000-0000	11 25 38											

09/11/06 - 11/06/06 This online class will be delivered entirely over the internet. After enrolling, start the class by going to <http://www.gavilan.edu/disted/>, click on your class link, and email the instructor at dvantassel@gavilan.edu. Students who have not begun the class or contacted the instructor by 5 pm on the 3rd day of class will be dropped from the class.



0528	LEC	ONLINE	VANTASSEL D	4.60	2.0	DHR	0000-0000	11 25 38											

10/23/06 - 12/11/06 This online class will be delivered entirely over the internet. After enrolling, start the class by going to <http://www.gavilan.edu/disted/>, click on your class link, and email the instructor at dvantassel@gavilan.edu. Students who have not begun the class or contacted the instructor by 5 pm on the 3rd day of class will be dropped from the class.



0529	LEC	HOL3	THOMPSON F	4.60	2.0	MW	0945A-1120A	11 25 38											

09/11/06 - 11/15/06 Above class meets at the Hollister Briggs site

2129	LEC	BU111	VANTASSEL D	4.60	2.0	Tu	0530P-0945P	11 25 38											

10/24/06 - 12/12/06

LIB 556 Information Competency for ESL Students

Advisory: ESL 546
Transferable: No

This class will provide an introduction to basic information competency skills designed especially for the ESL student. Students will get an overview of basic terminology, various formats of information, how information is stored and organized, plus hands-on experience with online catalogs and databases. They will also learn and practice basic search strategies and evaluation skills. This is a credit/no credit course. This course is also listed as ESL 556.

0530	LEC	BU119	MCNAMARA R	1.00	1.0	W	1040A-1215P	11 25											

10/04/06 - 12/20/06

Mass Media: see JOUR 10

Be Aware

If your goal is a MULTIPLE SUBJECT CREDENTIAL, you may need MATH 12, Math for Elementary Teachers.

MATHEMATICS

MATH 1A Single-Variable Calculus and Analytic Geometry

Prerequisite: Mathematics 10 or Mathematics 8B with a grade of 'C' or better.
Transferable: CSU; UC; CSU-GE: B4; IGETC: 2A; GAV-GE: B4; CAN: MATH 18, MATH SEQ. B
 Limits and continuity, analyzing the behavior and graphs of functions, derivatives, implicit differentiation, higher order derivatives, related rates and optimization word problems, Newton's Method, Fundamental Theorem of Calculus, and definite and indefinite integrals.

0537	LEC	LS101	WAGMAN K	4.50	4.0	F	1250P-0150P	1											
			WAGMAN K			MW	1255P-0220P												

MATH 1B Single-Variable Calculus and Analytic Geometry

Prerequisite: Mathematics 1A with a grade of 'C' or better.
Transferable: CSU; UC; CSU-GE: B4; IGETC: 2A; GAV-GE: B4; CAN: MATH 20, MATH SEQ. B
 This course is a standard second semester Calculus course covering methods of integration, applications of the integral, differential equations, parametric and polar equations, and sequences and series.

2130	LEC	PH102	DACHKOVA E	4.50	4.0	TuTh	0600P-0805P												
------	-----	-------	------------	------	-----	------	-------------	--	--	--	--	--	--	--	--	--	--	--	--

MATH 1C Multivariable Calculus

Prerequisite: Mathematics 1B with a grade of 'C' or better.
Transferable: CSU; UC; CSU-GE: B4; IGETC: 2A; GAV-GE: B4; CAN: MATH 22, MATH SEQ. C
 A standard third semester Calculus course covering functions of several variables, vectors, surfaces, vector-valued functions, partial derivatives, multiple and line integrals, Green's Theorem, Stokes' Theorem, and the Divergence Theorem.

0538	LEC	PH101	DWYER M	4.50	4.0	F	1250P-0150P												
			DWYER M			MW	1255P-0220P												

MATH 5 Introduction to Statistics

Prerequisite: Mathematics 233 with a grade of 'C' or better.
Transferable: CSU; UC; CSU-GE: B4; IGETC: 2A; GAV-GE: B4; CAN: STAT 2
 Descriptive analysis and presentation of either single-variable data or bivariate data, probability, probability distributions, normal probability distributions, sample variability, statistical inferences involving one and two populations, analysis of variance, linear correlation and regression analysis. Statistical computer software will be extensively integrated as a tool in the description and analysis of data.

0539	LEC	ONLINE	HUBBARD M	4.40	3.0	DHR	0000-0000	38											

10/23/06 - 11/06/06 This online class will be delivered entirely over the internet. After enrolling, start the class by going to <http://www.gavilan.edu/disted/>, click on your class link, and email the instructor at mhubbard@gavilan.edu. Students who have not begun the class or contacted the instructor by 5 pm on Thursday, September 7 will be dropped from the class.



0540	LEC	SS206	DWYER M	4.40	3.0	MW	0945A-1110A	1											
		PH101	DWYER M			F	0920A-1020A												

0541	LEC	PH103	JUKL H	4.40	3.0	TuTh	1120A-1245P	1											
		PH101	JUKL H			F	1140A-1240P												

2131	LEC	HOL2	STAFF	4.40	3.0	TuTh	0630P-0835P	1											

Above class meets at the Hollister Briggs site

2132	LEC	MHG4	VIARENGO A	4.40	3.0	M W	0630P-0835P	1											

Above class meets at Morgan Hill Community site

MATH 7 Finite Mathematics

Prerequisite: Mathematics 233 with a grade of 'C' or better.
Transferable: CSU; UC; CSU-GE: B4; IGETC: 2A; GAV-GE: B4; CAN: MATH 12
 Systems of linear equations and matrices, introduction to linear programming, finance, counting techniques and probability, properties of probability and applications of probability.

0542	LEC	PH102	LOCKHART L	3.40	3.0	MW	1255P-0220P	1											
------	-----	-------	------------	------	-----	----	-------------	---	--	--	--	--	--	--	--	--	--	--	--

Sect.	Type	Room	Instructor	Hrs.	Units	Days	Begin-End	Footnotes	Sect.	Type	Room	Instructor	Hrs.	Units	Days	Begin-End	Footnotes
-------	------	------	------------	------	-------	------	-----------	-----------	-------	------	------	------------	------	-------	------	-----------	-----------

MATH 8A First Half of Precalculus

Prerequisite: Mathematics 233 with a grade of 'C' or better.
Transferable: CSU; UC; CSU-GE: B4; IGETC: 2A; GAV-GE: B4

Math 8A prepares the student for the study of calculus by providing important skills in algebraic manipulation, interpretation, and problem solving at the college level. Topics will include basic algebraic concepts, complex numbers, equations and inequalities of the first and second degree, functions, and graphs, linear and quadratic equations, polynomial functions, exponential and logarithmic functions, systems of equations, matrices and determinants, right triangle trigonometry, and the Law of Sines and Cosines.

0543	LEC	SS206	DACHKOVA E DACHKOVA E	4.50	4.0	TuTh F	0945A-1110A 0920A-1020A	1
0544	LEC	SS206 PH103	JUKLH JUKLH	4.50	4.0	MW F	1255P-0220P 1250P-0150P	1

MATH 8B Second Half of Precalculus

Prerequisite: Mathematics 8A with a grade of 'C' or better.
Advisory: Math 208 Survey of Practical Geometry.
Transferable: CSU; UC; CSU-GE: B4; IGETC: 2A; GAV-GE: B4

Math 8B prepares students for the study of calculus by providing important skills in algebraic manipulation, interpretation, and problem solving at the college level. Topics will include trigonometric functions, identities, inverse trigonometric functions, and equations; applications of trigonometry, vectors, complex numbers, polar and parametric equations; conic sections; sequences, series, counting principles, permutations, mathematical induction; analytic geometry, and an introduction to limits.

0545	LEC	PH102	LEER	4.50	4.0	MW	0600P-0805P	
------	-----	-------	------	------	-----	----	-------------	--

MATH 12 Mathematics for Elementary Teachers

Prerequisite: Mathematics 208, or successful completion of a high school geometry course and Mathematics 233 with a grade of 'C' or better.
Transferable: CSU; UC; CSU-GE: B4; GAV-GE: B4

This course is intended for students preparing for a career in elementary school teaching. Emphasis will be on the structure of the real number system, numeration systems, elementary number theory, and problem solving techniques. Technology will be integrated throughout the course.

2133	LEC	MHG12	KERCHEVAL S	3.40	3.0	Tu	0600P-0910P	1
------	-----	-------	-------------	------	-----	----	-------------	---

Above class meets at Morgan Hill Community site



MATH 201A Math for Science and Engineering

Corequisite: Enrollment in appropriate section of Math 205 which is part of a learning community.
Transferable: No

This course will provide a combination of math study skills, introduction to scientific equipment and technology for mathematics, analysis of data from various branches of science, one or more field trips, investigation of educational plans and program choices at the transfer level.

0546	LEC	CH109	DRESCH M	1.00	1.0	F	1140A-1240P	
------	-----	-------	----------	------	-----	---	-------------	--

The above class is part of a learning community. You must enroll in corequisite courses.
 See MATHEMATICS - LEARNING COMMUNITY listings on page 92.



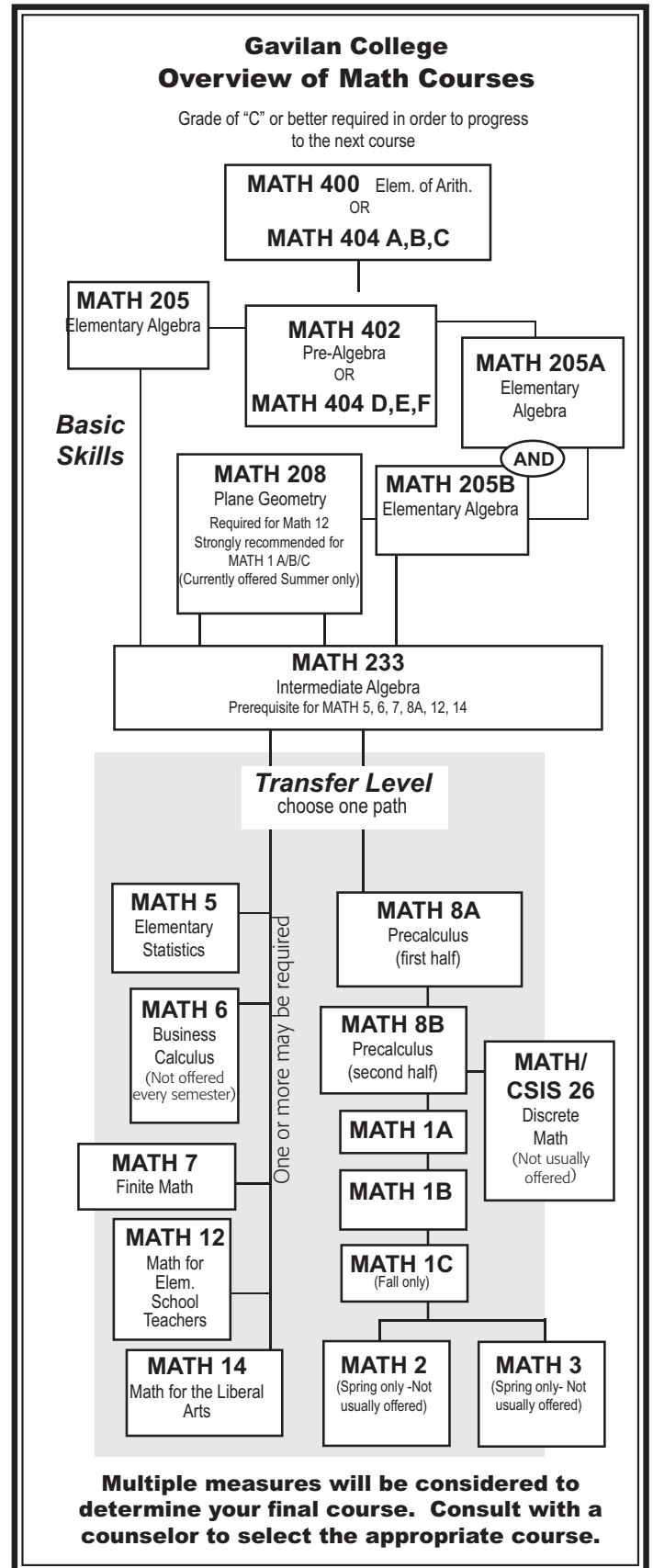
MATH 201B Math for Science and Engineering

Corequisite: Enrollment in appropriate section of Math 233 which is part of a learning community.
Transferable: No

This course will provide a combination of math study skills, introduction to scientific equipment and technology for mathematics, collection and analysis of data from various branches of science, one or more field trips, investigation of science careers and program choices at the transfer level.

0547	LEC	SS206	DWYERM	1.00	1.0	F	1140A-1240P	
------	-----	-------	--------	------	-----	---	-------------	--

The above class is part of a learning community. You must enroll in corequisite courses.
 See MATHEMATICS - LEARNING COMMUNITY listings on page 92.



Sect.	Type	Room	Instructor	Hrs.	Units	Days	Begin-End	Footnotes	Sect.	Type	Room	Instructor	Hrs.	Units	Days	Begin-End	Footnotes
-------	------	------	------------	------	-------	------	-----------	-----------	-------	------	------	------------	------	-------	------	-----------	-----------

MATH 205 Elementary Algebra

Prerequisite: MATH 402 with a grade of 'C' or better or assessment test recommendation.
Transferable: No; GAV-GE: B4

This course is a standard beginning algebra course, including algebraic expressions, linear equations and inequalities in one variable, graphing, equations and inequalities in two variables, integer exponents, polynomials, rational expressions and equations, radicals and rational exponents, and quadratic equations. Mathematics 205, 205A and 205B, and 206 have similar course content. This course may not be taken by students who have completed Mathematics 205B or 206 with a grade of "C" or better. This course may be taken for Mathematics 205B credit (2.5 units) by those students who have successfully completed Mathematics 205A with a grade of "C" or better.

0548	LEC	PH103	DWYER M DWYER M	5.60	5.0	MWF TuTh	0810A-0900A 0810A-0915A	1
0549	LEC	MHG13	KERCHEVALS	5.60	5.0	MTuWTh	0945A-1055A	1
Above class meets at Morgan Hill Community site								
0550	LEC	PH103	WAGMAN K	5.60	5.0	MTuWTh	0945A-1055A	1
0551	LEC	HOL2	FULLER G	5.60	5.0	MTuWTh	0945A-1055A	1
Above class meets at the Hollister Briggs site								
0552	LEC	CH109	DRESCH M	5.60	5.0	MTuWTh	1120A-1230P	1
The above class is part of a learning community. You must enroll in corequisite courses. See MATHEMATICS - LEARNING COMMUNITY listings on this page.								
0553	LEC	CH109	EHLERS G	5.60	5.0	MTuWTh	1255P-0205P	1
0554	LEC	SS206	STAFF	5.60	5.0	MTuWTh	0230P-0340P	
2134	LEC	HOL4	STAFF	5.60	5.0	TuTh	0600P-0830P	1
Above class meets at the Hollister Briggs site								
2135	LEC	MHG13	KING K	5.60	5.0	TuTh	0630P-0830P	1
Above class meets at Morgan Hill Community site								

MATH 205A First Half of Elementary Algebra

Prerequisite: Effective Fall 2005: MATH 402 with a grade of 'C' or better or assessment test recommendation.
Advisory: Concurrent enrollment in Guidance 563A is advised.
Transferable: No; GAV-GE: B4

This course is the first half of the Elementary Algebra course. It will cover signed numbers, evaluation of expressions, ratios and proportions, solving linear equations, and applications. Graphing of lines, the slope of a line, graphing linear equations, solving systems of equations, basic rules of exponents, and operations on polynomials will be covered.

0555	LEC	PH102	LOCKHART L LOCKHART L	4.50	2.5	F MW	0810A-0910A 0810A-0935A	1
0556	LEC	SS206	LOCKHART L LOCKHART L	4.50	2.5	F TuTh	1250P-0150P 1255P-0220P	1
2136	LEC	SS206	EHLERS G	4.50	2.5	TuTh	0630P-0835P	1

MATH 205B Second Half of Elementary Algebra

Prerequisite: Math 205A with a grade of 'C' or better.
Advisory: Concurrent enrollment in Guidance 563B is advised.
Transferable: No; GAV-GE: B4

This course contains the material covered in the second half of the Elementary Algebra Course. It will cover factoring, polynomials, solving quadratic equations by factoring, rational expressions and equations, complex fractions, radicals and radical equations, solving quadratic equations by completing the square and the quadratic formula. Application problems are integrated throughout the topics.

0557	LEC	PH102	DACHKOVA E DACHKOVA E	4.50	2.5	MW F	1120A-1245P 1140A-1240P	
------	-----	-------	--------------------------	------	-----	---------	----------------------------	--

**Have you met the prerequisite?
It's required!**

MATH 233 Intermediate Algebra

Prerequisite: Mathematics 205 or Mathematics 205A and 205B or Mathematics 206 with a grade of 'C' or better.
Transferable: No; GAV-GE: B4

Review of basic concepts, linear equations and inequalities, graphs and functions, systems of linear equations, polynomials and polynomial functions, factoring, rational expressions and equations, roots, radicals, and complex numbers, solving quadratic equations, exponential and logarithmic functions, and problem solving strategies.

0558	LEC	LS101	DRESCH M DRESCH M	5.60	5.0	MWF TuTh	0810A-0900A 0810A-0915A	1
0559	LEC	MHG3	BUTTERWORTH	5.60	5.0	MW	0945A-1055A	1
Above class meets at Morgan Hill Community site								
						MHG10	BUTTERWORTH	TuTh
Above class meets at Morgan Hill Community site								
0560	LEC	LS103 CH109	JUKL H JUKL H	5.60	5.0	MW TuTh	0945A-1055A	1
0561	LEC	HOL6	GUENTHER J	5.60	5.0	MTuWTh	0945A-1055A	1
Above class meets at the Hollister Briggs site								
0562	LEC	SS206	DWYER M	5.60	5.0	MTuWTh	1120A-1230P	1
The above class is part of a learning community. You must enroll in corequisite courses. See MATHEMATICS - LEARNING COMMUNITY listings below.								
0563	LEC	PH103	LEE R	5.60	5.0	MTuWTh	1255P-0205P	1
0564	LEC	SS206	VIARENGO A	5.60	5.0	MTuWTh	0400P-0510P	
2137	LEC	PH103	LOCKHART L	5.60	5.0	TuTh	0600P-0830P	

MATHEMATICS - Learning Community

Close Encounters with Math and Science

- Have you ever thought about a career in science, engineering, or math, but doubted your ability to get through the math classes required?
- Are you looking for a supportive environment to help you with your math?
- Have you ever wondered how math applies to real world problems?
- Would you like to gain some hands-on experience with tools and techniques of science?

Then this Learning Community is for you!

In these linked classes you'll have opportunities to:

- improve math-specific study skills and get help from in-class tutors
- get information about the career paths in science

For more information about this exciting new program, contact math instructor Marlene Dwyer in Ph110, call (408) 848-4897 (email mdwyer@gavilan.edu) or contact Marla Dresch at mdresch@gavilan.edu.

Sign up for:

MATH 201A Math for Science and Engineering

0546	LEC	CH109	DRESCH M	1.00	1.0	F	1140A-1240P	
------	-----	-------	----------	------	-----	---	-------------	--

MATH 205 Elementary Algebra

0552	LEC	CH109	DRESCH M	5.60	5.0	MTuWTh	1120A-1230P	1
------	-----	-------	----------	------	-----	--------	-------------	---

_____ OR _____

MATH 201B Math for Science and Engineering

0547	LEC	SS206	DWYER M	1.00	1.0	F	1140A-1240P	
------	-----	-------	---------	------	-----	---	-------------	--

MATH 233 Intermediate Algebra

0562	LEC	SS206	DWYER M	5.60	5.0	MTuWTh	1120A-1230P	1
------	-----	-------	---------	------	-----	--------	-------------	---

Sect.	Type	Room	Instructor	Hrs.	Units	Days	Begin-End	Footnotes
-------	------	------	------------	------	-------	------	-----------	-----------

MATH 400 Elements of Arithmetic

Transferable: No

Essential arithmetic operations, whole numbers, integers, fractions, decimals, ratio, proportion, percent, applications of arithmetic, and critical thinking, as well as math-specific study skills. Units earned in this course do not count toward the associate degree and/or other certain certificate requirements.

0565	L/L	SS206	BUTTERWORTH	4.40	3.0	MTuWTh	0810A-0910A	1
0566	L/L	LS102 PH102	DRESCH M DRESCH M	4.40	3.0	MW F	0945A-1110A 0920A-1020A	1
0567	L/L	PH103	DRESCH M	4.40	3.0	MTuTh	0400P-0515P	1

MATH 402 Pre-Algebra

Prerequisite: Completion of Math 400 with a 'C' or better, or assessment test recommendation. Transferable: No

This course covers operations with integers, fractions and decimals and associated applications, percentages, ratio, and geometry and measurement, critical thinking and applications. Elementary algebra topics such as variables, expressions, and solving equations are introduced.

0568	L/L	LS102	JUKL H JUKL H	4.40	3.0	MW TuTh	0810A-0910A	1
0569	L/L	LS102	WAGMAN K WAGMAN K	4.40	3.0	TuTh F	1120A-1245P 1140A-1240P	1
0570	L/L	PH102	FULLER G	4.40	3.0	MTuTh	0230P-0345P	
2138	L/L	PH103	ARID A	4.40	3.0	M W	0630P-0835P	1

MATH 404A-G Self-Paced Basic Math

These classes involve both lecture and hands-on computer components. All sections are open for late registration.

Transferable: No

This course is a remedial, modular, self-paced course. Application and critical thinking skills are developed in each module. Module A covers operations with whole numbers, equivalent fractions, multiplying and dividing fractions. Module B covers adding and subtracting fractions, and operations with decimals. Module C covers ratio and proportion, percent, and units of measurement. Module D reviews fractions, decimals, percentages, and covers operations with integers, and working with variables. Module E covers real numbers, fractions, exponents, scientific notation, and order of operations. Module F covers expressions, polynomials, and equations. Module G covers geometric figures, perimeter and area, surface area and volume, triangles and parallelograms, and similar figures. This course has the option of a letter grade or credit/no credit.

MATH 404A

0571	L/L	PH101	DACHKOVA E	1.30	1.0	TuTh	1255P-0325P	1 79
------	-----	-------	------------	------	-----	------	-------------	------

MATH 404B

0572	L/L	PH101	DACHKOVA E	1.30	1.0	TuTh	1255P-0325P	1 79
------	-----	-------	------------	------	-----	------	-------------	------

MATH 404C

0573	L/L	PH101	DACHKOVA E	1.30	1.0	TuTh	1255P-0325P	1 79
------	-----	-------	------------	------	-----	------	-------------	------

MATH 404D

0574	L/L	PH101	DACHKOVA E	1.30	1.0	TuTh	1255P-0325P	1 79
------	-----	-------	------------	------	-----	------	-------------	------

MATH 404E

0575	L/L	PH101	DACHKOVA E	1.30	1.0	TuTh	1255P-0325P	1 79
------	-----	-------	------------	------	-----	------	-------------	------

MATH 404F

0576	L/L	PH101	DACHKOVA E	1.30	1.0	TuTh	1255P-0325P	1 79
------	-----	-------	------------	------	-----	------	-------------	------

MATH 404G

0577	L/L	PH101	DACHKOVA E	1.30	1.0	TuTh	1255P-0325P	1 79
------	-----	-------	------------	------	-----	------	-------------	------

Medical Terminology: see Business

Sect.	Type	Room	Instructor	Hrs.	Units	Days	Begin-End	Footnotes
-------	------	------	------------	------	-------	------	-----------	-----------

MUSIC

MUS 1A Music History and Literature

Advisory: Eligible for English 250 and English 260.

Transferable: CSU; UC; CSU-GE: C1; IGETC: 3A; GAV-GE: C1; CAN: MUS 8

A survey of the development of music in western civilization including representative composers from the Medieval to the present. Music 1A will study the music and styles from the Medieval to the Romantic period.

0578	LEC	AL101	JUNCKER A	3.40	3.0	TuTh	0945A-1110A	
------	-----	-------	-----------	------	-----	------	-------------	--


MUS 1B Music History and Literature

Advisory: Eligible for English 250 and English 260.

Transferable: CSU; UC; CSU-GE: C1; IGETC: 3A; GAV-GE: C1

A survey of the development of music in western civilization including representative composers from the Medieval period to the present. Music 1B will study the music and styles from late Romanticism to the present.

0579	LEC	ONLINE	BENKMANN	3.40	3.0	DHR	0000-0000	38
------	-----	--------	----------	------	-----	-----	-----------	----

 This online class will be delivered entirely over the internet. After enrolling, start the class by going to <http://www.gavilan.edu/disted/>, click on your class link, and email the instructor at nbenkman@gavilan.edu. Students who have not begun the class or contacted the instructor by 5 pm on Thursday, September 7 will be dropped from the class.

MUS 3A Harmony - Theory - Musicianship

Advisory: Must be taken in sequence.

Transferable: CSU; UC; CSU-GE: C1; GAV-GE: C1

Fundamentals of music, beginning harmony.

0580	L/L	TH130	AMIRKHANIAN	6.80	4.	TuTh&1	0840A-1110A	
------	-----	-------	-------------	------	----	--------	-------------	--

MUS 3B Harmony - Theory - Musicianship

Advisory: Must be taken in sequence.

Transferable: CSU; UC; GAV-GE: C1

Fundamentals of music, beginning harmony.

0581	L/L	TH130	JUNCKER A	6.80	4.0	MW&2.3	0905A-1110A	
------	-----	-------	-----------	------	-----	--------	-------------	--

MUS 3C Intermediate Harmony - Theory

Advisory: Music 3B

Transferable: CSU; UC; GAV-GE: C1

Continuation of Music 3AB. Chromatic harmony, analysis and composition.

0582	L/L	TH130	JUNCKER A	6.80	4.0	MW&2.3	0905A-1110A	
------	-----	-------	-----------	------	-----	--------	-------------	--

FREE TUTORING

Gavilan College

Math Lab

Services for Gavilan Students:

◆ Free Tutoring for MATH
Free Computer Assistance

Staffed by the Math Department

For daily schedule, or for free math downloads, check our web site - <http://gavilan.edu/mathlab/>

PH 101

Sect.	Type	Room	Instructor	Hrs.	Units	Days	Begin-End	Footnotes	Sect.	Type	Room	Instructor	Hrs.	Units	Days	Begin-End	Footnotes
-------	------	------	------------	------	-------	------	-----------	-----------	-------	------	------	------------	------	-------	------	-----------	-----------

MUS 3D Intermediate Harmony - Theory

Advisory: Music 3C

Transferable: CSU; UC; GAV-GE: C1

Continuation of Music 3C. Analysis and composition.

0583	L/L	TH130	JUNCKERA	6.80	4.0	MW&2.3	0905A-1110A
------	-----	-------	----------	------	-----	--------	-------------

MUS 4A Beginning Piano

Advisory: Must be taken in sequence.

Transferable: CSU; UC; CSU-GE: C1; GAV-GE: C1

Introduction to music fundamentals and keyboard technique. Development of beginning keyboard skills including note reading in bass and treble clef, fingering, rhythm, key signatures, primary chords and inversions.

0584	L/L	TH130	AMIRKHANIAN	4.60	3.0	TuTh	1120A-0125P
0765	L/L	TH130	AMIRKHANIAN	4.60	3.0	MW	1120A-0125P
2139	L/L	TH130	MELLO S	4.60	3.0	M&2.3	0630P-0940P

MUS 4B Beginning Piano

Advisory: Music 4A

Transferable: CSU; UC; GAV-GE: C1

Continuation of Music 4A.

0585	L/L	TH130	LIN C	3.30	2.0	TuTh	0230P-0355P
2140	L/L	TH130	MELLO S	3.30	2.0	M	0630P-0940P

MUS 5A Intermediate Piano

Advisory: Music 4B

Transferable: CSU; UC; GAV-GE: C1

Development of intermediate keyboard skills through means of scales, chords, and technical studies. Continuation of music fundamentals and beginning keyboard harmony; introduction of easier classical and standard piano literature.

0586	L/L	TH130	LIN C	3.30	2.0	TuTh	0230P-0355P
2141	L/L	TH130	MELLO S	3.30	2.0	M	0630P-0940P

MUS 5B Intermediate Piano

Advisory: Music 5A

Transferable: CSU; UC; GAV-GE: C1

Development of intermediate keyboard skills through means of scales, chords and technical studies. Continuation of music fundamentals and beginning keyboard harmony; introduction of easier classical and standard piano literature.

0587	L/L	TH130	LIN C	3.30	2.0	TuTh	0230P-0355P
2142	L/L	TH130	MELLO S	3.30	2.0	M	0630P-0940P

MUS 5C Advanced Piano

Advisory: Music 5B

Transferable: CSU; UC; GAV-GE: C1

Development of advanced keyboard skills through means of scales, chords and technical studies. Continuation of music fundamentals and keyboard harmony; introduction of moderately difficult classical and standard piano literature.

0588	L/L	TH130	LIN C	3.30	2.0	TuTh	0230P-0355P
2143	L/L	TH130	MELLO S	3.30	2.0	M	0630P-0940P

MUS 5D Advanced Piano

Advisory: Music 5C

Transferable: CSU; UC; GAV-GE: C1

Development of advanced keyboard skills through means of scales, chords and technical studies. Continuation of music fundamentals and keyboard harmony; introduction of moderately difficult classical and standard piano literature.

0589	L/L	TH130	LIN C	3.30	2.0	TuTh	0230P-0355P
2144	L/L	TH130	MELLO S	3.30	2.0	M	0630P-0940P

MUS 8A Beginning Voice

Advisory: Continues in sequence or by demonstrated proficiency.

Transferable: CSU; UC; GAV-GE: C1

Development of techniques in the art of singing and interpreting serious music in various styles. Study of the basic techniques of tone production, breathing and related skills. Basic repertoire development.

0590	L/L	AL101	PRUITT N	3.30	2.0	TuTh	1120A-1245P
------	-----	-------	----------	------	-----	------	-------------

MUS 8B Beginning Voice

Advisory: Music 8A or demonstrated proficiency.

Transferable: CSU; UC; GAV-GE: C1

Development of techniques in the art of singing and interpreting serious music in various styles. Study of the basic techniques of tone production, breathing and related skills. Basic repertoire development.

0591	L/L	AL101	PRUITT N	3.30	2.0	TuTh	1200P-0125P
------	-----	-------	----------	------	-----	------	-------------

MUS 8C Intermediate Voice

Advisory: Music 8B or demonstrated proficiency.

Transferable: CSU; UC; GAV-GE: C1

Development of techniques in the art of singing and interpreting serious music in various styles. Study of the basic techniques of tone production, breathing and related skills. Basic repertoire development.

0592	L/L	AL101	PRUITT N	3.30	2.0	TuTh	1200P-0125P
------	-----	-------	----------	------	-----	------	-------------

MUS 8D Intermediate Voice

Advisory: Music 8C or demonstrated proficiency.

Transferable: CSU; UC; GAV-GE: C1

Development of techniques in the art of singing and interpreting serious music in various styles. Study of the basic techniques of tone production, breathing and related skills. Basic repertoire development.

0593	L/L	AL101	PRUITT N	3.30	2.0	TuTh	1200P-0125P
------	-----	-------	----------	------	-----	------	-------------

MUS 9A Guitar

Advisory: Students must provide their own guitars.

Transferable: CSU; UC; GAV-GE: C1

An introduction to playing the guitar. Basic staff notation, correct fingering and chord arpeggios are covered. Emphasis is also placed on developing musical listening skills. Students must provide their own guitars. May be repeated once for credit.

2145	LAB	AL101	MONTOYA T	3.40	1.0	M	0530P-0840P
------	-----	-------	-----------	------	-----	---	-------------

MUS 9B Guitar

Advisory: Music 9A; students must provide their own guitars.

Transferable: CSU; UC; GAV-GE: C1

An introduction to playing the guitar. Basic staff notation, correct fingering and chord arpeggios are covered. Emphasis is also placed on developing musical listening skills. Students must provide their own guitars. May be repeated once for credit.

2146	LAB	AL101	MONTOYA T	3.40	1.0	M	0630P-0940P
------	-----	-------	-----------	------	-----	---	-------------

Campus under construction
ROOM NUMBERS MAY CHANGE!

Check room numbers online before your first class.

Sect.	Type	Room	Instructor	Hrs.	Units	Days	Begin-End	Footnotes
-------	------	------	------------	------	-------	------	-----------	-----------

Sect.	Type	Room	Instructor	Hrs.	Units	Days	Begin-End	Footnotes
-------	------	------	------------	------	-------	------	-----------	-----------

MUS 12 Vocal Ensemble

Transferable: CSU; UC; GAV-GE: C1

The day Vocal Ensemble will focus on individual and group performance of popular and alternative commercial music, and will rehearse and perform with a backup band. The evening Vocal Ensemble will study, rehearse and perform choral music in a broad spectrum of musical genre and styles. Included will be the study of vocal and rehearsal techniques as they relate to ensemble performance. Course may be repeated three times for credit.

0594	L/L	AL101	JUNCKER A	4.40	2.0	MW	1255P-0300P	
------	-----	-------	-----------	------	-----	----	-------------	--

MUS 13 Concert Choir

Advisory: Previous choral experience is preferred but not required. The student should have the ability to match a given pitch.

Transferable: CSU; UC; GAV-GE: C1

The Concert Choir will study, rehearse and perform choral music from the 15th century to the present in a variety of musical styles with emphasis on the larger choral works and their preparation for public concert. Course may be repeated three times for credit.

2147	L/L	GHS	ROBB P	4.40	2.0	Tu	0630P-0945P	67
See Footnote: Above class meets at Gilroy High School								

MUS 14A Instrumental Ensemble

Transferable: CSU; GAV-GE: C1

Instruction for the experienced musician with emphasis on the study and performance of a wide variety of musical styles from Renaissance to 20th century music for traditional ensembles, and extensive consideration of contemporary commercial and alternative repertoire, and performance techniques for popular ensembles.

0595	L/L	AL101	MARQUES A	4.40	2.0	MW	1255P-0300P	
2148	L/L	AL101	MOLLICONE H	4.40	2.0	W	0700P-0945P	

MUS 14B Instrumental Ensemble

Transferable: CSU; GAV-GE: C1

Instruction for the experienced musician with emphasis on the study and performance of a wide variety of musical styles from Renaissance to 20th century music for traditional ensembles, and extensive consideration of contemporary commercial and alternative repertoire, and performance techniques for popular ensembles.

0596	L/L	AL101	MARQUES A	4.40	2.0	MW	1255P-0300P	
2149	L/L	AL101	MOLLICONE H	4.40	2.0	W	0700P-0945P	

MUS 14C Instrumental Ensemble

Transferable: CSU; GAV-GE: C1

Instruction for the experienced musician with emphasis on the study and performance of a wide variety of musical styles from Renaissance to 20th century music for traditional ensembles, and extensive consideration of contemporary commercial and alternative repertoire, and performance techniques for popular ensembles.

0597	L/L	AL101	MARQUES A	4.40	2.0	MW	1255P-0300P	
2150	L/L	AL101	MOLLICONE H	4.40	2.0	W	0630P-0945P	

MUS 14D Instrumental Ensemble

Transferable: CSU; GAV-GE: C1

Instruction for the experienced musician with emphasis on the study and performance of a wide variety of musical styles from Renaissance to 20th century music for traditional ensembles, and extensive consideration of contemporary commercial and alternative repertoire, and performance techniques for popular ensembles.

0598	L/L	AL101	MARQUES A	4.40	2.0	MW	1255P-0300P	
2151	L/L	AL101	MOLLICONE H	4.40	2.0	W	0630P-0945P	

MUS 21 Electronic Music/Sound Design

Advisory: Eligible for English 250, 260 and Mathematics 205.

Transferable: CSU; GAV-GE: C1

Fundamentals of electronic music synthesis using computers. Midi sequencing, digital sound processing, sampling, digital multi-track recording utilizing the college's state of the art midi studio. May be repeated three times for credit.

0599	L/L	L1128	JUNCKER A	5.70	3.0	TuTh	1120A-1245P	
------	-----	-------	-----------	------	-----	------	-------------	--

MUS 22 Field Work and Service

Required: Learning contracts must be filled out and signed by the student and the supervising instructor.

Transferable: CSU

Supervised field work within the college and with local agencies. Students serve in useful group activities in leadership roles prescribed for them by faculty or community agencies. A maximum of six units may be completed. This is a credit/no credit course.

2152	FEX	GHS	ROBB P	3.40	1.0	Tu&3.4	0630P-0945P	21 67
See Footnote: Above class meets at Gilroy High School								
2153	FEX	AL101	MOLLICONE H	3.40	1.0	W&3.4	0630P-0945P	21

MUS 23 Independent Study

Required: The study outline prepared by the student and the instructor must be filed with the department and the dean.

Transferable: CSU

Designed to afford selected students specialized opportunities for exploring areas at the independent study level. The courses may involve extensive library work, research in the community, or special projects. May be repeated until six units of credit are accrued. This course has the option of a letter grade or credit/no credit.

0600	IND	TH130	HICKS G	3.40	1.0	DHR	0000-0000	22
0601	IND	TH130	HICKS G	6.80	2.0	DHR	0000-0000	22
0602	IND	AL102	JUNCKER A	3.40	1.0	DHR	0000-0000	22
0603	IND	AL102	JUNCKER A	6.80	2.0	DHR	0000-0000	22
0604	IND	AL101	PRUITT N	3.40	1.0	DHR	0000-0000	22
0605	IND	AL101	PRUITT N	6.80	2.0	DHR	0000-0000	22
2154	IND	AL101	MONTOYA T	3.40	1.0	M&3.4	0700P-0945P	22
2155	IND	GHS	ROBB P	3.40	1.0	Tu&3.4	0700P-0945P	22 67
See Footnote: Above class meets at Gilroy High School								
2156	IND	AL101	MOLLICONE H	3.40	1.0	W&3.4	0700P-0945P	22

GRADUATION INFORMATION

Call 408-848-4737 for details on the graduation process.

The deadline for filling out a petition for graduation for fall is October 16, 2006.

Admissions & Records

Sect.	Type	Room	Instructor	Hrs.	Units	Days	Begin-End	Footnotes
MUS 26	Symphony							
Advisory: Demonstrated proficiency on individual's instrument and ability to read music. Transferable: CSU; UC; GAV-GE: C1 Study and performance of orchestral literature. Individual and sectional skills development. Perform in public concerts each semester. May be repeated until a maximum of 8 units are accrued.								
2157	L/L	AL101	MOLLICONE H	4.40	2.0	W	0630P-0945P	

MUS 28	Jazz/Pop Piano							
Advisory: Music 4A or the equivalent. Transferable: CSU; UC; GAV-GE: C1 Introduction to jazz and popular piano: Chord symbols, chord voicings, improvisation, arrangements in blues, jazz, and other popular music styles. May be repeated three times for credit.								
2158	L/L	TH130	HICKS G	4.40	2.0	W	0600P-0910P	

MUS 98	Special Topics							
Transferable: CSU; GAV-GE: C1 Special topics courses examine current problems or issues of interest to students within a specific discipline area. For topical content information, consult with appropriate department chairperson. For transfer status, check with a counselor. This course may have the option of a letter grade or credit/no credit.								
2159	LEC	AL101	MOLLICONE H	1.00	1.0	W	0700P-0945P	

Nursing: see Allied Health
Nutrition: see Biological Sciences
Performing Arts: see Theatre Arts (THEA)

PHILOSOPHY

PHIL 2	Logic							
Advisory: Eligible for English 1A. Transferable: CSU; UC; CSU-GE: A3; GAV-GE: C2; CAN: PHIL 6 Philosophy 2 is intended as a survey of the primary approaches to argumentation and what has been traditionally called 'correct' reasoning. Students will learn techniques of both deductive and inductive argumentation, basic symbolic logic, how to spot a fallacy, as well as how to apply these techniques to other aspects of their lives outside of the classroom. While logic is often quite formal, the goal is to see the practical application of this discipline. Students will become acquainted with the cultural variations to reasoning in addition to the standard Western focal approach.								
0672	LEC	AR103	JOHNSTON M	3.40	3.0	TuTh	0810A-0935P	

PHIL 3A	Ethics							
Advisory: Eligible for English 1A. Transferable: CSU; UC; CSU-GE: C2; IGETC: 3B; GAV-GE: C2; CAN: PHIL 4 Philosophy 3 is intended as a survey of the major areas and traditions of ethical and moral theories. The course examines central and significant questions about who determines what is morally right or wrong, the ideal society, the various notions social justice, moral agency and action in our lives and community, as well as many other topics. In pursuing these questions, students will be asked to read texts from writers around the world, both contemporary and ancient, discuss current events, and apply 'theory' to movies, novels, and any other relevant application of the student's own choice.								
0673	LEC	SS205	HODGE E	3.40	3.0	TuTh	0945A-1110A	

PHIL 4	Critical Thinking and Writing							
Prerequisite: English 1A Transferable: CSU; UC; CSU-GE: A3; IGETC: 1B; GAV-GE: C2 This course is designed to introduce the relationship between critical thinking and critical writing in a way that will be both enjoyable to the student and helpful in other aspects of life. The student will learn techniques of critical thinking, playing close attention to the current events, movies and popular media, music lyrics, as well as the textbook. Students will learn to identify deductive and inductive arguments and be able to evaluate their strength, create a strong argument of their own on a given topic, as well become experts in the area of critical analysis. The goal is to enable students to become strong, well informed, articulate members of the community as well as individuals with an empowered sense of self as an agent of change.								
0671	LEC	AL101	HODGE E	3.40	3.0	MW	0810A-0935A	
0674	LEC	AL101	HODGE E	3.40	3.0	MW	0945A-1110A	

PHIL 6A	Comparative Religions							
Advisory: Eligible for English 1A. Transferable: CSU; UC; CSU-GE: C2; IGETC: 3B; GAV-GE: C2, F Religion is a topic that ignites controversy -- most societies engage in religious practices, believe strongly in that tradition, and find a sense of identity within it. The controversy arises when differences are misunderstood, misrepresented, or placed in a hierarchy of assumed supremacy of one religion as superior to others. In this class, students explore the underlying commonality of various religious traditions, explore the uniqueness of the religions with which they are unfamiliar, and learn to see that diversity among beliefs doesn't have to create hostility. Students will explore religions from Indigenous Peoples throughout the world, East Asia (e.g. India), China, the Middle East, as well as some more recent trends in religion.								
0675	LEC	SS210	HODGE E	3.40	3.0	TuTh	1255P-0220P	

PHIL 7A	History of Philosophy: Ancient to Medieval Times							
Advisory: Eligible for English 1A. Transferable: CSU; UC; CSU-GE: C2; IGETC: 3B; GAV-GE: C2 Philosophy 7A is a survey of the history of philosophy from the ancient to the medieval periods. It is a great class to take along with World History or a literature course.								
0676	LEC	AL101	HODGE E	3.40	3.0	TuTh	0810A-0945A	

PHIL 23	Independent Study							
Required: The study outline prepared by the student and the instructor must be filed with the department and the dean. Transferable: CSU Designed to afford selected students specialized opportunities for exploring areas at the independent study level. The courses may involve extensive library work, research in the community, or special projects. May be repeated until six units of credit are accrued. This course has the option of a letter grade or credit/no credit.								
0677	IND	SS106	HODGE E	3.40	1.0	DHR	0000-0000	

Photography: see Art

PHYSICAL EDUCATION: ACADEMIC

PE 1	Orientation for Student Athlete Success							
Transferable: CSU This course identifies and clarifies issues relevant to student athletes. Students will learn practical skills which will assist them in obtaining their educational objectives: such as proper use of library services, time management, and test and note taking information.								
0612	LEC	LS104	LANGO J	2.30	2.0	Tu	1120A-1220P	
			LANGO J			Th	1120A-1225P	

Sect.	Type	Room	Instructor	Hrs.	Units	Days	Begin-End	Footnotes
-------	------	------	------------	------	-------	------	-----------	-----------

PE 7 Theory of Sports Management

Transferable: CSU

This course introduces the theory of organizing, planning, directing and controlling a sports program. Areas such as budgeting, fundraising, advertising, marketing, and studying contract law will also be included.

0613	LEC	APE120	STAFF	3.40	3.0	TuTh	0945A-1110A	
------	-----	--------	-------	------	-----	------	-------------	--

PE 10A Fundamentals of Softball

Transferable: CSU; UC

Basic Theory, strategy, technique, practice and conditioning of softball to prepare the individual student in all aspects of playing and coaching the sport. May be repeated once for credit. This course has the option of a letter grade or credit/no credit.

0615	L/L	GY131G	THOMPSON N	5.90	2.0	TuWTh	0230P-0430P	11
10/03/06 - 12/21/06								

PE 10B Fundamentals of Softball

Advisory: PE 10A

Transferable: CSU; UC

This course offers review and advanced instruction in the theory, strategies, and techniques of softball for the purposes of preparing the individual student in all aspects of playing and coaching the sport. May be repeated once for credit. This course has the option of a letter grade or credit/no credit.

0616	L/L	GY131G	THOMPSON N	5.90	2.0	TuWTh	0230P-0430P	11
10/03/06 - 12/21/06								

PE 11A Fundamentals of Baseball

Transferable: CSU; UC

Theory, strategy, technique, practice and conditioning of baseball to prepare the individual student in all aspects of playing and coaching the sport. May be repeated once for credit. This course has the option of a letter grade or credit/no credit.

0617	L/L	GY131G	STAFF	4.40	2.0	MW	0230P-0435P	
------	-----	--------	-------	------	-----	----	-------------	--

PE 11B Fundamentals of Baseball

Advisory: Physical Education 11A.

Transferable: CSU; UC

This course offers review and advanced instruction in the theory, strategies, and techniques of baseball for the purpose of preparing the individual student in all aspects of playing and coaching the sport. May be repeated once for credit. This course has the option of a letter grade or credit/no credit.

0618	L/L	GY131G	STAFF	4.70	2.0	MW	0230P-0435P	
------	-----	--------	-------	------	-----	----	-------------	--

PE 12A Fundamentals of Football

Transferable: CSU; UC

Basic organization and administration of a football program involving equipment, practice schedules, personnel, conditioning, scouting, weight training, and football specific drills. May be repeated once for credit. This course has the option of a letter grade or credit/no credit.

0619	L/L	APE120	LANGO J	4.70	2.0	MTuWTh	0230P-0330P	
------	-----	--------	---------	------	-----	--------	-------------	--

PE 12B Fundamentals of Football

Advisory: Physical Education 12A.

Transferable: CSU; UC

The administration and organization of a football program involving practice schedules, personnel, equipment, scouting, conditioning, weight training and football drills. May be repeated once for credit. This course has the option of a letter grade or credit/no credit.

0620	L/L	APE121	LANGO J	4.70	2.0	MTuWTh	0230P-0330P	
------	-----	--------	---------	------	-----	--------	-------------	--

Sect.	Type	Room	Instructor	Hrs.	Units	Days	Begin-End	Footnotes
-------	------	------	------------	------	-------	------	-----------	-----------

PE 14A Fundamentals of Basketball

Transferable: CSU; UC; CSU-GE: E1; GAV-GE: E1

Basic theory, strategy, technique, practice, and conditioning involved in basketball to prepare the individual student in all aspects of playing and coaching the sport. May be repeated once for credit. This course has the option of a letter grade or credit/no credit.

2160	L/L	APE120	SHOEMAKER C	4.70	2.0	MW	0430P-0630P	
------	-----	--------	-------------	------	-----	----	-------------	--

PE 14B Fundamentals of Basketball

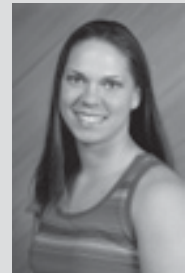
Advisory: PE 14A

Transferable: CSU; UC; CSU-GE: E1; GAV-GE: E1

More in-depth and advanced instruction in the theory, strategy, practice, and conditioning in basketball to better prepare the individual student in all aspects of playing and coaching the sport. Designed for the student who has already completed PE 14A. May be repeated once for credit. This course has the option of a letter grade or credit/no credit.

2161	L/L	APE121	SHOEMAKER C	4.70	2.0	MW	0430P-0630P	
------	-----	--------	-------------	------	-----	----	-------------	--

FACULTY Profile



Stephanie Pascucci:

I went to college at San Jose State University where I got a full-ride scholarship for volleyball. I played there from 1999-2002 and graduated Cum Laude in 2003 with my Bachelors of Science degree in Kinesiology, with an emphasis in sport management. While at SJSU, I made the WAC All-Academic team 3 years, got the Order of Sparta award, was named to the 1st team All-WAC for volleyball and was the first athlete at SJSU to get the Stan Bates Award (Top female student-athlete in the WAC). I went on to get my masters degree at SJSU in sport management and graduated in 2005. While getting my graduate degree, I was an assistant coach for the women's volleyball team.

My philosophy is that you get out of it what you put into it when it comes to academics and athletics. You should push yourself to be the best and do your best!!

I currently teach and coach volleyball at Gavilan and I'm also the volunteer coordinator for the San Jose Grand Prix.

PHYSICAL EDUCATION

■ Fall 2006 Schedule

Sect. Type	Room	Instructor	Hrs.	Units	Days	Begin-End	Footnotes	Sect. Type	Room	Instructor	Hrs.	Units	Days	Begin-End	Footnotes
------------	------	------------	------	-------	------	-----------	-----------	------------	------	------------	------	-------	------	-----------	-----------

PHYSICAL EDUCATION: ACTIVITIES

PE 16 Swimming

Transferable: CSU; UC; CSU-GE: E1; GAV-GE: E1

Coeducational activity designed for all skill levels. The course teaches the techniques of a variety of strokes and includes conditioning activities. Instruction is tailored to meet individual and group needs. May be repeated three times for credit. This course has the option of a letter grade or credit/no credit.

0621	LAB	GY100P	DODD S	3.40	1.0	MW	1120A-1245P
------	-----	--------	--------	------	-----	----	-------------

PE 17 Golf

Transferable: CSU; UC; CSU-GE: E1; GAV-GE: E1

Coeducational activity designed for all skill levels; fundamentals, techniques, rules and etiquette of golf. May be repeated three times for credit. This course has the option of a letter grade or credit/no credit.

0622	LAB	GY200C	STAFF	3.40	1.0	F	1040A-0140P	49
2162	LAB	GY200C	KRAUSE S	3.40	.5	S	0900A-1200P	11 49

09/09/06 - 10/21/06

PE 18 Tennis

Transferable: CSU; UC; CSU-GE: E1; GAV-GE: E1

Coeducational activity stressing fundamentals of tennis such as forehand, backhand, serve and volley, along with the rules, etiquette and strategies of the game. May be repeated three times for credit. This course has the option of a letter grade or credit/no credit.

0623	LAB	GY131G	DODD S	3.40	1.0	MW	1255P-0220P
------	-----	--------	--------	------	-----	----	-------------

PE 20 Bowling

Transferable: CSU; UC; CSU-GE: E1; GAV-GE: E1

Coeducational activity designed for beginning and intermediate bowlers; fundamentals and techniques of bowling. Scoring, bowling etiquette, terminology and team bowling are included. May be repeated three times for credit. This course has the option of a letter grade or credit/no credit.

0624	LAB	GIBOWL	LANGO J	3.40	1.0	TuTh	0810A-0935A	62
------	-----	--------	---------	------	-----	------	-------------	----

See Footnote: Above class meets Off Campus

PE 23 Independent Study

Required: The study outline prepared by the student and the instructor must be filed with the department and the dean.

Transferable: CSU

Designed to afford selected students specialized opportunities for exploring areas at the independent study level. The courses may involve extensive library work, research in the community, or special projects. May be repeated until six units of credit are accrued. This course has the option of a letter grade or credit/no credit.

0625	IND	GY100C	DODD S	6.80	2.0	DHR	0000-0000	22
------	-----	--------	--------	------	-----	-----	-----------	----

PE 24 Individualized Weight Training

Transferable: CSU; UC; CSU-GE: E1; GAV-GE: E1

An open laboratory for those who desire an individualized strength program using exercise machines and free weights. May be repeated three times for credit. This course has the option of a letter grade or credit/no credit.

0626	LAB	GY123	DODD S	3.40	1.0	Day/Time-	see instructor
0627	LAB	GY123	DODD S	1.70	.5	Day/Time-	see instructor

PE 25 Soccer

Transferable: CSU; UC; CSU-GE: E1; GAV-GE: E1

Co-educational activity designed for all skill levels. Fundamentals, strategy and rules of the game are included. May be repeated three times for credit. This course has the option of a letter grade or credit/no credit.

0628	LAB	GY131G	STAFF	3.40	1.0	MW	0810A-0935P
------	-----	--------	-------	------	-----	----	-------------

PE 39 Fencing

Transferable: CSU; UC; CSU-GE: E1; GAV-GE: E1

This course will explore the offensive and defensive fencing skills with a foil. May be repeated three times credit. This course has the option of a letter grade or credit/no credit.

2163	LAB	APE101	DECESARE J	3.40	1.0	M	0630P-0940P	44
------	-----	--------	------------	------	-----	---	-------------	----

PE 44 Aerobics

Transferable: CSU; UC; CSU-GE: E1; GAV-GE: E1

A program of aerobic fitness. Includes various forms of exercise to improve health, heart, and body composition. May be repeated three times for credit. This course has the option of a letter grade or credit/no credit.

0643	LAB	GY131G	THOMPSON N	3.40	1.0	MW	1120A-1245P
------	-----	--------	------------	------	-----	----	-------------

PE 61 Swim for Fitness

Transferable: CSU; UC; CSU-GE: E1; GAV-GE: E1

Designed to develop endurance and swimming skills in order to maintain good cardiovascular/physical fitness. Intermediate swimming ability recommended. May be repeated three times for credit. This course has the option of a letter grade or credit/no credit.

2164	LAB	GY100P	DODD S	3.40	.5	TuTh	0500P-0625P	11
------	-----	--------	--------	------	----	------	-------------	----

09/05/06 - 10/26/06

PE 62 Yoga

Transferable: CSU; UC; CSU-GE: E1; GAV-GE: E1

Co-educational activity designed for beginning yoga students. A program designed to improve flexibility and reduce stress, by learning a series of postures and focusing on proper breathing techniques. May be repeated three times for credit. This course has the option of a letter grade or credit/no credit.

0644	LAB	APE101	MUSCARI D	3.40	1.0	MW	1255P-0220P
------	-----	--------	-----------	------	-----	----	-------------

2165	LAB	MHG10	WATSON M	3.40	1.0	M W	0500P-0625P
------	-----	-------	----------	------	-----	-----	-------------

Above class meets at Morgan Hill Community site

2168	LAB	VET218	MUSCARI D	3.40	1.0	TuTh	0500P-0625P	41
------	-----	--------	-----------	------	-----	------	-------------	----

See Footnote: Above class meets Off Campus

PE 64 Individualized Cardiovascular Fitness

Transferable: CSU; UC; CSU-GE: E1; GAV-GE: E1

A fitness program which develops cardiovascular endurance through an individualized open lab format. May be repeated three times for credit. This course has the option of a letter grade or credit/no credit.

0645	LAB	GY123	DODD S	3.40	1.0	DHR	0000-0000
------	-----	-------	--------	------	-----	-----	-----------

0646	LAB	GY123	DODD S	1.70	.5	DHR	0000-0000
------	-----	-------	--------	------	----	-----	-----------



PE 66 Dance Fundamentals

Transferable: CSU; UC; CSU-GE: E1; GAV-GE: E1

Designed to introduce and develop movement principles and skills necessary to perform modern dance and ballet. May also include jazz and/or tap dance. Emphasizes enjoyment of dance as a form of exercise and will include some conditioning. Basic choreography skills will be included. May be repeated three times for credit. This course has the option of a letter grade or credit/no credit.

0647	LAB	APE101	STAFF	3.40	1.0	TuTh	1120A-1245P
------	-----	--------	-------	------	-----	------	-------------

PE 70 Pilates

Transferable: CSU; UC; CSU-GE: E1; GAV-GE: E1

This class utilizes the Pilates exercise system focused on improving flexibility and strength for the total body through a series of controlled movements. May be repeated three times for credit. This course has the option of a letter grade or credit/no credit.

0648	LAB	APE101	MUSCARI D	3.40	1.0	TuTh	1255P-0220P
------	-----	--------	-----------	------	-----	------	-------------

PE 71 Self-Defense for Women

Transferable: CSU; UC; CSU-GE: E1; GAV-GE: E1

Instruction in techniques of self-defense which will help students avoid and respond to dangerous situations. Emphasis will be placed on how women can defend themselves when under attack. This course has the option of a letter grade or credit/no credit. May be repeated three times for credit.

0649	LAB	GY131G	TAMASU T	3.40	1.0	TuTh	1255P-0220P
------	-----	--------	----------	------	-----	------	-------------

Sect.	Type	Room	Instructor	Hrs.	Units	Days	Begin-End	Footnotes	Sect.	Type	Room	Instructor	Hrs.	Units	Days	Begin-End	Footnotes
-------	------	------	------------	------	-------	------	-----------	-----------	-------	------	------	------------	------	-------	------	-----------	-----------

PE 72 Aikido

Transferable: CSU; UC; CSU-GE: E1; GAV-GE: E1

An introduction to the Japanese-derived martial art. Emphasis will be on mind-body harmony, balance, and relaxation. Aikido self-defense techniques aim toward the creative resolution of conflict and the growth of the individual. This course has the option of a letter grade or credit/no credit. May be repeated three times for credit.

0650	LAB	GY131G	TAMASU T	3.40	1.0	TuTh	1120A-1245P	
------	-----	--------	----------	------	-----	------	-------------	--

PHYSICAL EDUCATION: ADAPTED

PE 34 Adapted Aquatic Exercise

Transferable: CSU; UC; CSU-GE: E1; GAV-GE: E1

Designed to help individuals who by the nature of their disability such as wheelchair use, back injury, cardiovascular impairment, multiple sclerosis or other disabling condition require a specific aquatic exercise program that will contribute to their physical well-being. May be repeated as necessary based on measurable progress as documented in the student's educational contract. This course has the option of a letter grade or credit/no credit.

0629	LAB	GY100P	ELLIS D	3.40	1.0	MW	0810A-0935A	90 75
0630	LAB	GY100P	ELLIS D CRETIN A	3.40	1.0	TuTh	1120A-1245P	90 75
0631	LAB	GY100P	ELLIS D CRETIN A	3.40	1.0	MW	1255P-0220P	90 75

PE 35 Adapted Swimming for Total Fitness

Transferable: CSU; UC; CSU-GE: E1; GAV-GE: E1

An individualized program of activities designed for students with physical disabilities to improve flexibility and range-of-motion, increase joint movement, improve circulation, and improve control of body movement through water adjustment and activities. Develops an appreciation of physical activity as a regular planned contribution to one's overall well-being. May be repeated as necessary based on measurable progress as documented in the student's educational contract. This course has the option of a letter grade or credit/no credit.

0632	LAB	GY100P	ELLIS D	3.40	1.0	MW	0810A-0935A	90 75
0633	LAB	GY100P	ELLIS D CRETIN A	3.40	1.0	TuTh	1120A-1245P	90 75
0634	LAB	GY100P	ELLIS D CRETIN A	3.40	1.0	MW	1255P-0220P	90 75

PE 36 Adapted Physical Education

Transferable: CSU; UC; CSU-GE: E1; GAV-GE: E1

An individualized program of adaptive physical education activities designed to meet the needs of students with physical disabilities. Develops an appreciation of physical activity as a regular planned contribution to one's overall well-being. May be repeated as necessary based on measurable progress as documented in the student's educational contract. This course has the option of a letter grade or credit/no credit.

0635	LAB	APE108 APE120 APE121	ELLIS D ELLIS D ELLIS D	3.40	1.0	MW	0945A-1110A	90
0636	LAB	APE108 APE120 APE121 APE108 APE120 APE121	ELLIS D ELLIS D ELLIS D CRETIN A CRETIN A CRETIN A	3.40	1.0	TuTh	0945A-1110A	90 75
0637	LAB	APE108	ELLIS D	3.40	1.0	MW	1120A-1245P	90 75
0638	LAB	APE108 APE120 APE121	ELLIS D ELLIS D ELLIS D	3.40	1.0	TuTh	1255P-0220P	90 75

PE Activities Classes can be taken for letter grade or CR/NC.

Students should be aware that there are inherent risks involved in any physical exercise. Students are strongly advised to consult a physician prior to participating in any physical education activity.

PE 18

TENNIS is back!
Check out the
new courts!



section 0623

M/W 12:55 - 2:20 pm GY131G



PE 66

DANCE FUNDAMENTALS

section 0647

TuTh 11:20 am - 12:45 pm APE101

PE 24 Individualized Weight Training

PE 64 Cardiovascular Fitness



Open Lab Class Format

Designed for individualized strength or cardiovascular fitness programs in an open lab setting using a variety of exercise equipment.

Section hours by arrangement

1.5 to 3 weekly hours • .5 or 1.0 unit • Fitness Center (GYM 123)

Students should check in the first week of the semester during lab hours.

Fall Semester Fitness Center Lab Hours

Day	MWF	7:00 am - 2:00 pm
	TTh	9:30 am - 1:30 pm
Eve.	MTWTh	4:30 pm - 6:30 pm



Brush Up your Software Skills

Most Computer Applications classes are repeatable.

PHYSICAL EDUCATION

■ Fall 2006 Schedule

Sect.	Type	Room	Instructor	Hrs.	Units	Days	Begin-End	Footnotes	Sect.	Type	Room	Instructor	Hrs.	Units	Days	Begin-End	Footnotes
PE 38 Adapted Cardiovascular Conditioning & Training									PE 536 Adapted Physical Education								
Transferable: CSU; UC; CSU-GE: E1; GAV-GE: E1									Transferable: No								
Prescribed exercises in weight training, stretching and cardiovascular conditioning for those individuals that have been disabled through stroke, cardiovascular accident, arthritis, multiple sclerosis, or other condition. May be repeated as necessary based on measurable progress as documented in the student's educational contract. This course has the option of a letter grade or credit/no credit.									An individualized program of adaptive physical education activities designed to meet the needs of students with physical disabilities. Develops an appreciation of physical activity as a regular planned contribution to one's overall well-being. May be repeated as necessary based on measurable progress as documented in the student's educational contract. This is a credit/no credit course.								
0639	LAB	APE108 APE120 APE121	ELLIS D ELLIS D ELLIS D	3.40	1.0	MW	0945A-1110A	90 75	0657	LAB	LOADCS APE108 APE120 APE121	CRETIN A ELLIS D ELLIS D ELLIS D	3.40	1.0	MW	0930A-1055A	70 75 90
									See Footnote: Above class meets Off Campus								
0640	LAB	APE120 APE108 APE121 APE120 APE108 APE121	ELLIS D ELLIS D ELLIS D CRETIN A CRETIN A CRETIN A	3.40	1.0	TuTh	0945A-1110A	90 75	0658	LAB	APE108 APE120 APE121	ELLIS D ELLIS D ELLIS D	3.40	1.0	MW	0945A-1110A	90
0641	LAB	APE108	ELLIS D	3.40	1.0	MW	1120A-1245P	90 75	0659	LAB	APE108 APE120 APE121 APE108 APE120 APE121	ELLIS D ELLIS D ELLIS D CRETIN A CRETIN A CRETIN A	3.40	1.0	TuTh	0945A-1110A	90 75
0642	LAB	APE108 APE120 APE121	ELLIS D ELLIS D ELLIS D	3.40	1.0	TuTh	1255P-0220P	90 75	0660	LAB	HOLLCC APE108 APE120 APE121	CRETIN A ELLIS D ELLIS D ELLIS D	3.40	1.0	MW	1120A-1245P	68 75 90
									See Footnote: Above class meets Off Campus								
									0661 LAB APE108 ELLIS D 3.40 1.0 MW 1120A-1245P 90 75								
									0662 LAB APE108 ELLIS D 3.40 1.0 TuTh 1255P-0220P 90								

PE 534 Adapted Aquatic Exercise

Transferable: No

Designed to help individuals who by the nature of their disability such as wheelchair use, back injury, cardiovascular impairment, multiple sclerosis or other disabling condition require a specific aquatic exercise program that will contribute to their physical well being. May be repeated as necessary based on measurable progress as documented in the student's educational contract. This is a credit/no credit course.

0651	LAB	GY100P	ELLIS D	3.40	1.0	MW	0810A-0935A	90 75
0652	LAB	GY100P	ELLIS D CRETIN A	3.40	1.0	TuTh	1120A-1245P	90 75
0653	LAB	GY100P	ELLIS D CRETIN A	3.40	1.0	MW	1255P-0220P	90 75

PE 535 Adapted Swimming for Total Fitness

Transferable: No

An individualized program of activities designed for students with physical disabilities to improve flexibility and range-of-motion, increase joint movement, improve circulation, and improve control of body movement through water adjustment and activities. Develops an appreciation of physical activity as a regular planned contribution to one's overall well-being. May be repeated as necessary based on measurable progress as documented in the student's educational contract. This course is credit/no credit.

0654	LAB	GY100P	ELLIS D	3.40	1.0	MW	0810A-0935A	90 75
0655	LAB	GY100P	ELLIS D CRETIN A	3.40	1.0	TuTh	1120A-1245P	90 75
0656	LAB	GY100P	ELLIS D CRETIN A	3.40	1.0	MW	1255P-0220P	90 75

PE 538 Adapted Cardiovascular Conditioning & Training

Transferable: No

Prescribed exercises in weight training, stretching and cardiovascular conditioning for those individuals that have been disabled through stroke, cardiovascular accident, arthritis, multiple sclerosis, or other condition. May be repeated as necessary based on measurable progress as documented in the student's educational contract. This is a credit/no credit course.

0663	LAB	APE108 APE120 APE121	ELLIS D ELLIS D ELLIS D	3.40	1.0	MW	0945A-1110A	90 75
0664	LAB	APE108 APE120 APE121 APE108 APE120 APE121	ELLIS D ELLIS D ELLIS D CRETIN A CRETIN A CRETIN A	3.40	1.0	TuTh	0945A-1110A	90 75
See Footnote: Above class meets Off Campus								
0665	LAB	LOADCS APE108 APE120 APE121	CRETIN A ELLIS D ELLIS D CRETIN A	3.40	1.0	TuTh	0945A-1110A	70 75 90
0666	LAB	APE108	ELLIS D	3.40	1.0	MW	1120A-1245P	75 90
0667	LAB	APE108 APE120 APE121	ELLIS D ELLIS D ELLIS D	3.40	1.0	TuTh	1255P-0220P	90 75

INTERCOLLEGIATE ATHLETICS

ATH 35 Basketball

Transferable: CSU; UC; CSU-GE: E1; GAV-GE: E1

This course provides practice and competition in intercollegiate basketball. May be repeated three times for credit. This course has the option of a letter grade or credit/no credit.

0115	LAB	GY131G	SHOEMAKER C	10.00	2.0	DAILY	0230P-0430P
------	-----	--------	-------------	-------	-----	-------	-------------

ATH 42 Football

Transferable: CSU; UC; CSU-GE: E1; GAV-GE: E1

This course provides practice and competition in intercollegiate football. May be repeated three times for credit. This course has the option of a letter grade or credit/no credit.

0116	LAB	GY131G	LANGO J	10.00	2.0	DAILY	0330P-0530P
------	-----	--------	---------	-------	-----	-------	-------------

Your educational plan:

You are expected to take the responsibility for scheduling an appointment with a counselor, preferably at least once a semester. The purpose of this appointment is to develop, review and update your educational plan to ensure that you are taking the appropriate courses to meet your educational goal.

Sect.	Type	Room	Instructor	Hrs.	Units	Days	Begin-End	Footnotes
-------	------	------	------------	------	-------	------	-----------	-----------

ATH 46 Volleyball

Transferable: CSU; UC; CSU-GE: E1; GAV-GE: E1

This course provides practice and competition in intercollegiate volleyball for women. May be repeated three times for credit. This course has the option of a letter grade or credit/no credit.

2027	LAB	GY131G	PASCUCCI S	10.00	2.0	DAILY	0430P-0630P	
------	-----	--------	------------	-------	-----	-------	-------------	--

ATH 47 Soccer

Transferable: CSU; UC; CSU-GE: E1; GAV-GE: E1

This course provides practice and competition in intercollegiate soccer. May be repeated three times for credit. This course has the option of a letter grade or credit/no credit.

0117	LAB	GY131G	STAFF	10.00	2.0	DAILY	0300P-0500P	
------	-----	--------	-------	-------	-----	-------	-------------	--

PHYSICAL SCIENCE

PSCI 1 Principles of Physical Science

Advisory: Mathematics 205 and eligible for English 250 and 260.

Transferable: CSU; UC; CSU-GE: B1; IGETC: 5A; GAV-GE: B1

An introductory course in the physical sciences for the non-science major. Attention is focused on fundamental laws of nature, their development and relation to the physical world.

0691	LEC	CH109	CLARK D	3.40	3.0	TuTh	0810A-0935A	
------	-----	-------	---------	------	-----	------	-------------	--

PSCI 2 Introduction to Meteorology

Advisory: MATH 205.

Transferable: CSU; UC; GAV-GE: B1

An introductory course in Meteorology that is both descriptive and analytical on the physical principles affecting the earth's weather. Topics covered include the nature of the atmosphere, solar energy, heat, temperature, pressure, stability, moisture, wind, storms, severe weather and forecasting. The course introduces climatology as a scientific study and will look at the earth's climatic history, current research in climate modeling and the possibility of global climate change.

0755	LEC	ONLINE	VANTUYLA	3.40	3.0	DHR	0000-0000	2038
------	-----	--------	----------	------	-----	-----	-----------	------

Online This online class will be delivered entirely over the internet. After enrolling, start the class by going to <http://www.gavilan.edu/disted/>, click on your class link, and email the instructor at avantuy1@gavilan.edu. Students who have not begun the class or contacted the instructor by 5 pm on Thursday, September 7 will be dropped from the class.

PHYSICS

PHYS 1 Introduction to Physics

Advisory: Mathematics 205.

Transferable: CSU; UC; CSU-GE: B1, B3; IGETC: 5A; GAV-GE: B1, B3

This course is an introduction to the fundamental physical principles that control the world around us. Students will explore the fundamental principles of physics, their historical development, their application to everyday phenomena, and their impact upon political, social, and environmental issues. Laboratory exercises will explore the everyday world.

0678	L/L	PH102	LEER	6.80	4.0	TuTh	0945A-1250P	
------	-----	-------	------	------	-----	------	-------------	--

PHYS 2A General Physics

Prerequisite: MATH 8A or MATH 9.

Advisory: Eligible for English 250 and English 260.

Transferable: CSU; UC; CSU-GE: B1, B3; IGETC: 5A; GAV-GE: B1, B3; CAN: PHYS 2, PHYS SEQ. A

An introduction to the principles of physics using algebra and trigonometry. Topics include kinematics in one and two dimensions, vectors, equilibrium and non-equilibrium applications of Newton's Laws, work and energy, momentum, rotational kinematics and dynamics, simple harmonic motion, elasticity, thermal physics, thermodynamics, and waves.

0679	L/L	PH103	LEER	6.80	4.0	MW	1120A-1245P	
			LEER			F	1140A-1240P	
			LEER			W	0230P-0435P	

Sect.	Type	Room	Instructor	Hrs.	Units	Days	Begin-End	Footnotes
-------	------	------	------------	------	-------	------	-----------	-----------

POLITICAL SCIENCE

POLS 1 Introduction to American Government


Advisory: Eligible for English 250 and English 260.

Transferable: CSU; UC; CSU-GE: D8; IGETC: 4H, 7A; GAV-GE: D1, D2; CAN: GOVT 2

Explores the development of American political institutions and their utilization in dealing with issues arising at the international, national and state levels. Emphasis is placed on those problems which have defined our federal system of government. California government and appropriate state institutions will be included as a vital part of our federal system of government.

0680 LEC ONLINE TURETZKY M 3.40 3.0 DHR 0000-0000 38
Online This online class will be delivered entirely over the internet. After enrolling, start the class by going to <http://www.gavilan.edu/disted/>, click on your class link, and email the instructor at mturetzky@gavilan.edu. Students who have not begun the class or contacted the instructor by 5 pm on Thursday, September 7 will be dropped from the class.

0681	LEC	SS210	TURETZKY M	3.40	3.0	MW	0810A-0935A	
0682	LEC	SS210	TURETZKY M	3.40	3.0	TuTh	0810A-0935A	
0683	LEC	MHG5	KIER D	3.40	3.0	TuTh	0945A-1110A	
								Above class meets at Morgan Hill Community site
0684	LEC	SS210	STAFF	3.40	3.0	MW	0400P-0535P	



MATH ♦ ENGINEERING ♦ SCIENCE MAJORS

PLANNING TO TRANSFER?

Admission for these majors is very competitive

DID YOU KNOW?

- ♦ 4-year universities stress preparation for the major over completion of general education
- ♦ High-unit majors do not need to fulfill all general education requirements
- ♦ You do not need to get an AA or AS degree to transfer
- ♦ You should plan your sequential courses early

ASSIST can help you plan your courses to complete major preparation prior to transfer.

Go to **www.assist.org**
 AND see a counselor to develop an educational plan.



MESA
 MATHEMATICS • ENGINEERING • SCIENCE ACHIEVEMENT

- ♦ Are you a math based major? (BIO, CSIS, Architecture, etc.)
- ♦ Do you want to transfer to a 4-year university?
- ♦ Do you have financial need? You may be eligible!

Gavilan's MESA Program is now accepting applications. MESA students are entitled to workshops, academic advising, field trips, tutoring and more!


For more information call 408-848-4887 or visit the MESA Study Center in PH 105.

♦ www.gavilan.edu/MESA ♦

Sect.	Type	Room	Instructor	Hrs.	Units	Days	Begin-End	Footnotes	Sect.	Type	Room	Instructor	Hrs.	Units	Days	Begin-End	Footnotes
-------	------	------	------------	------	-------	------	-----------	-----------	-------	------	------	------------	------	-------	------	-----------	-----------

POLS 3 Introduction to Comparative Politics

Advisory: Eligible for English 250 and English 260.
Transferable: CSU; UC; CSU-GE: D8; IGETC: 4H; GAV-GE: D2, F
 Comparative survey of political institutions and processes around the globe. Selected nations may include, but are not restricted to: the United Kingdom, France, Germany, Japan, Russia, India, Nigeria, and Mexico.

0685 LEC ONLINE TURETZKY M 3.40 3.0 DHR 0000-0000 38
 **This online class will be delivered entirely over the internet. After enrolling, start the class by going to <http://www.gavilan.edu/disted/>, click on your class link, and email the instructor at mturetzky@gavilan.edu. Students who have not begun the class or contacted the instructor by 5 pm on Thursday, September 7 will be dropped from the class.**

 **POLS 4 Introduction to International Relations**

Transferable: CSU; UC; CSU-GE: D8; IGETC: 4H; GAV-GE: D2, F
 This course provides an introduction to key contemporary international problems and the means to analyze them. Major parts of the course cover such topics as war and peace, foreign policymaking, the international economy, and future trends in world politics.

0686 LEC/Online LI171 TURETZKY M 3.40 3.0 MW 0945A-1110A 13
This HYBRID lecture/online class will be delivered partially over the internet. Come to the campus for the first day of class.

POLS 12 Introduction to Political Thought

Transferable: CSU; UC; CSU-GE: D8; IGETC: 4H; GAV-GE: D2
 This course provides students with an introduction to and grounding in classical and modern political thought. Students will be introduced to theorists such as Plato, Aristotle, Machiavelli, and Marx. Students will also examine such timeless questions as: "What is justice?" "What is the good life?" and "What is power?" among others. This course is also listed as PHIL 12. Previously POLS 2.

2170 LEC	LI171	TURETZKY M	3.40	3.0	Tu	0530P-0840P
----------	-------	------------	------	-----	----	-------------

POLS 22 Field Work and Service

Required: Learning contracts must be filled out and signed by the student and the supervising instructor.
Transferable: CSU
 Supervised field work within the college and with local agencies. Students serve in useful group activities in leadership roles prescribed for them by faculty or community agencies. A maximum of six units may be completed. This is a credit/no credit course.

0687 FEX	SS107	TURETZKY M	3.40	1.0	DHR	0000-0000 21
----------	-------	------------	------	-----	-----	--------------

POLS 23 Independent Study

Required: The study outline prepared by the student and the instructor must be filed with the department and the dean.
Transferable: CSU
 Designed to afford selected students specialized opportunities for exploring areas at the independent study level. The courses may involve extensive library work, research in the community, or special projects. May be repeated until six units of credit are accrued. This course has the option of a letter grade or credit/no credit.

0688 IND	SS107	TURETZKY M	3.40	1.0	DHR	0000-0000 22
0689 IND	SS107	TURETZKY M	6.80	2.0	DHR	0000-0000 22

POLS 27 Contemporary Leadership

Advisory: Eligible for English 250 and English 260.
Transferable: CSU; GAV-GE: E2
 A cross-disciplinary approach to the theory and practice of leadership. Includes effective communication styles including issues related to gender and culture. Class includes topics on ethics, power, and how to run effective meetings including the use of parliamentary procedure. Skills directly applicable to work, personal and college environments. May be repeated for a maximum of 10 units. Also listed as PSYC 27.

0690 L/L	SC154N	STEWART J	4.60	3.0	TuTh&2	0810A-0935A 25
----------	--------	-----------	------	-----	--------	----------------

PSYCHOLOGY

PSYC 1A Introduction to Psychology

Advisory: Eligible for English 250 and English 260.
Transferable: CSU; UC; CSU-GE: D9; IGETC: 4I; GAV-GE: D2; CAN: PSY 2
 The nature, scope, methods, presuppositions, history, and fields of psychology together with the scientific study of factors influencing human behavior, human development, perception, learning, memory, emotion, personality, frustration, and psychotherapy.

0692 LEC	SS214	STAFF	3.40	3.0	MW	0810A-0935A	
0693 LEC	SS214	HINN G	3.40	3.0	TuTh	0810A-0935A	
0694 LEC	MHG3	BALES N	3.40	3.0	MW	1120A-1245P	
Above class meets at Morgan Hill Community site							
0695 LEC	SS205	CAMPILLI J	3.40	3.0	TuTh	1255P-0220P	
0696 LEC	SS205	STAFF	3.40	3.0	TuTh	0230P-0355P	
2171 LEC	SS214	STAFF	3.40	3.0	Th	0600P-0910P	

PSYC 1B Introduction to Psychology

Advisory: Psychology 1A
Transferable: CSU; UC; CSU-GE: D9; IGETC: 4I; GAV-GE: D2
 Continuation of Psychology 1A. This course stresses the biological basis of behavior including: neuroanatomy, the senses, perception, learning, thinking, and psychological disorders.

0697 LEC	SS110	STAFF	3.40	3.0	TuTh	1120A-1245P
----------	-------	-------	------	-----	------	-------------


PSYC 2 Early Child Development

Advisory: Eligible for English 250 and English 260.
Transferable: CSU; UC; CSU-GE: D9, E; IGETC: 4I; GAV-GE: D2
 A systematic study of the child from prenatal life through the preschool years. The course integrates the basic concepts of physical, cognitive and psychosocial development at each major stage of life during this period. This course is also listed as CD 2. This course has the option of a letter grade or credit/no credit.

0698 LEC	MHG4	BUMGARNER M	3.40	3.0	TuTh	0945A-1110A 25	
Above class meets at Morgan Hill Community site							
2172 LEC	MHG13	SHARPE E	7.50	3.0	S	0830A-0300P 11 25	
09/09/06 - 12/16/06 Esta sección sera enseñada en Español. Above class meets at the Morgan Hill Community site.							
2173 LEC	HOL5	BROWN R	3.40	3.0	W	0600P-0910P 25	
Above class meets at the Hollister Briggs site							

PSYC 3 Child Growth and Development During the School Years

Advisory: Eligible for English 250 and English 260; Psychology 2.
Transferable: CSU; UC; CSU-GE: D9, E; IGETC: 4I; GAV-GE: D2
 Continuation of the study of child development with emphasis on children from six years of age through adolescence. Includes developmental theories and topics relevant to these ages. This course is also listed as CD 3. This course has the option of a letter grade or credit/no credit.

0770 LEC ONLINE BUMGARNER M 3.40 3.0 DHR 0000-0000 25 38
 **This online class will be delivered entirely over the internet. After enrolling, start the class by going to <http://www.gavilan.edu/disted/>, click on your class link, and email the instructor at mbugarner@gavilan.edu. Students who have not begun the class or contacted the instructor by 5 pm on Thursday, September 7 will be dropped from the class.**

**Campus under construction
 ROOM NUMBERS MAY CHANGE!**

Check room numbers online before your first class.

Sect. Type	Room	Instructor	Hrs.	Units	Days	Begin-End	Footnotes
------------	------	------------	------	-------	------	-----------	-----------

Sect. Type	Room	Instructor	Hrs.	Units	Days	Begin-End	Footnotes
------------	------	------------	------	-------	------	-----------	-----------

PSYC 5 Self-Assessment and Career Development

Advisory: Eligible for English 250 and English 260.
Transferable: CSU; CSU-GE: E2; GAV-GE: E2

A course designed to assist the student in learning more about personal values, personality, interests, exploration of career choice, and occupational opportunities through the use of various personal assessment instruments. The delivery options for this course include online and self-paced formats. This course is also listed as GUID 1.

0699	LEC	ONLINE	SHARBONEAU	2.30	2.0	DHR	0000-0000	25 38 89
------	-----	--------	------------	------	-----	-----	-----------	----------

This online class will be delivered entirely over the internet. After enrolling, start the class by going to <http://www.gavilan.edu/disted/>, click on your class link, and email the instructor at rsharboneau@gavilan.edu. Students who have not begun the class or contacted the instructor by 5 pm on Thursday, September 7 will be dropped from the class.

0700	LEC	ONLINE	SHARBONEAU	2.30	2.0	DHR	0000-0000	25 38 89
------	-----	--------	------------	------	-----	-----	-----------	----------

This online class will be delivered entirely over the internet. After enrolling, start the class by going to <http://www.gavilan.edu/disted/>, click on your class link, and email the instructor at rsharboneau@gavilan.edu. Students who have not begun the class or contacted the instructor by 5 pm on Thursday, September 7 will be dropped from the class.

0701	LEC	TH127	LISTER T	2.30	2.0	Tu	1255P-0155P	25 89
			LISTER T			Th	1255P-0200P	

PSYC 7 Cultural Context of Childhood

Transferable: CSU; CSU-GE: D7; GAV-GE: D2, F

This course examines cultural influences on child-rearing practices, family values, and human development. Perspectives from the social sciences will be used to explore what is common to all Homo sapiens and what is specific to the culture of the U.S. Students will explore their personal assumptions and attitudes towards diversity, and practice implementing non-stereotypical, developmentally appropriate, anti-bias activities, interactions, and environments in order to respond to and intervene against prejudice among children. This course is also listed as CD 7 and ANTH 9.

0702	LEC	MHG4	BUMGARNER M	3.40	3.0	MW	1120A-1245P	25
------	-----	------	-------------	------	-----	----	-------------	----

Above class meets at Morgan Hill Community site

PSYC 22 Field Work and Service

Required: Learning contracts must be filled out and signed by the student and the supervising instructor.
Transferable: CSU

Supervised field work within the college and with local agencies. Students serve in useful group activities in leadership roles prescribed for them by faculty or community agencies. A maximum of six units may be completed. This is a credit/no credit course.

0703	FEX	SS119	HINN G	3.40	1.0	DHR	0000-0000	21
------	-----	-------	--------	------	-----	-----	-----------	----

PSYC 23 Independent Study

Required: The study outline prepared by the student and the instructor must be filed with the department and the dean.
Transferable: CSU

Designed to afford selected students specialized opportunities for exploring areas at the independent study level. The courses may involve extensive library work, research in the community, or special projects. May be repeated until six units of credit are accrued. This course has the option of a letter grade or credit/no credit.

0704	IND	SS119	HINN G	6.80	2.0	DHR	0000-0000	22
------	-----	-------	--------	------	-----	-----	-----------	----

PSYC 27 Contemporary Leadership

Advisory: Eligible for English 250 and English 260.
Transferable: CSU; GAV-GE: E2

A cross-disciplinary approach to the theory and practice of leadership. Includes effective communication styles including issues related to gender and culture. Class includes topics on ethics, power, and how to run effective meetings including the use of parliamentary procedure. Skills directly applicable to work, personal and college environments. May be repeated for a maximum of 10 units. Also listed as POLS 27.

0705	L/L	SC154N	STEWART J	4.60	3.0	TuTh&2	0810A-0935A	25
------	-----	--------	-----------	------	-----	--------	-------------	----

Physiology: see Biological Sciences
Public Speaking: see Communications

REAL ESTATE

RE 160 Real Estate Principles

Advisory: Eligible for English 250, English 260 and Mathematics 205.
Transferable: CSU

The fundamental course covering an introduction to the field of real estate. Provides understanding, background and terminology necessary for advanced specialized courses. Will meet requirements for the Real Estate Sales License.

2174	LEC	MHG11	FRIMANN G	3.40	3.0	S	0830A-1150A
------	-----	-------	-----------	------	-----	---	-------------

Above class meets at Morgan Hill Community site

2175	LEC	HOL2	LITTIG A	3.40	3.0	M	0600P-0910P
------	-----	------	----------	------	-----	---	-------------

Above class meets at the Hollister Briggs site

2176	LEC	BU120	FRIMANN G	3.40	3.0	Th	0630P-0940P
------	-----	-------	-----------	------	-----	----	-------------

RE 162 Real Estate Practice

Advisory: Real Estate 160
Transferable: CSU

Introduction to the practice of real estate in California; emphasis on the practical application of listings, selling, advertising, financing, escrow, taxation, and valuation of real estate. This course meets a requirement for the California Broker's License.

2177	LEC	BU120	FRIMANN G	3.40	3.0	Tu	0630P-0940P
------	-----	-------	-----------	------	-----	----	-------------

Skin Care: see COS 220, 221

SOCIAL SCIENCES, GENERAL

SSCI 270A Introduction to the Social Sciences

Prerequisite: Completion of English 420 with a grade of 'C' or better or Assessment recommendation.
Advisory: Eligible for English 250.
Transferable: No; GAV-GE: A3

An introduction to key concepts, principles, frameworks and issues in the major social science disciplines of history, economics, and political science for students wishing to get a broad overview. Development of research, reasoning, writing, topical reading, and critical analytical skills germane to politics, economics, and social change will be emphasized so students will build skills to evaluate contemporary policies and practices of governments, groups, and individuals. This course has the option of a letter grade or credit/no credit.

0720	LEC	SS110	HALPERL	3.40	3.0	TuTh	0945A-1110A
------	-----	-------	---------	------	-----	------	-------------

POLS 4: INTRODUCTION TO INTERNATIONAL RELATIONS



This class is for you if you have ever wondered:
 -Why people around the globe are still killing each other?
 -Why billions of our global neighbors live in extreme poverty while we live in relative wealth?
 -Why global weather patterns seem to be worsening?
 -Whether Saddam Hussein ever really had possession of weapons of mass destruction?
 -Whether the world is closer than ever to nuclear armageddon?

If you are interested in answers to questions like these (and more) then this is the class for you!

****It also fulfills graduation and UC and CSU transfer requirements!!!**



This HYBRID lecture/online class will be delivered partially over the internet. Come to the campus for the first day of class.

SECTION: 0686 **DAYS & TIME:** MW, 9:45-11:10 **ROOM:** LI 171
PROFESSOR: Dr. Marc Turetzky

Sect.	Type	Room	Instructor	Hrs.	Units	Days	Begin-End	Footnotes	Sect.	Type	Room	Instructor	Hrs.	Units	Days	Begin-End	Footnotes
-------	------	------	------------	------	-------	------	-----------	-----------	-------	------	------	------------	------	-------	------	-----------	-----------

SOCIOLOGY

SPANISH

SOC 1A Introduction to Sociology

Advisory: Eligible for English 250 and English 260.

Transferable: CSU; UC; CSU-GE: D0; IGETC: 4J; GAV-GE: D2; CAN: SOC 2

Analysis of the structure and dynamics of human society focusing on the development of culture, the socialization process, group behavior, social inequality, deviance, sexism, racism, and ageism, major social institutions, and human ecology. Emphasizes contemporary American society.

0706 LEC MHG11 BALES N 3.40 3.0 MW 0945A-1110A

Above class meets at Morgan Hill Community site

0707 LEC SS214 MOORE M 3.40 3.0 TuTh 0945A-1110A

0752 LEC GHS CERVANTES E 3.40 3.0 M 0310P-0620P 55

See Footnote: Above class meets Gilroy High School, room B-7. See page 14 for more information.

2178 LEC AL101 FAUTT M 3.40 3.0 Tu 0600P-0910P

SOC 1B Introduction to Sociology: Social Problems

Advisory: Sociology 1A

Transferable: CSU; UC; CSU-GE: D0; IGETC: 4J; GAV-GE: D2; CAN: SOC 4

Sociology 1B is a course centering on the application of sociological concepts to the analysis of human ecology, social movements, social change, deviance and other selected social problems. Emphasis is placed on the study and analysis of problems in contemporary American society.

0708 LEC CH102 MOORE M 3.40 3.0 TuTh 1120A-1245P

SOC 3 Sociology of Minorities

Advisory: Eligible for English 250 and English 260.

Transferable: CSU; UC; CSU-GE: D0; IGETC: 4J; GAV-GE: D2, F

The study of selected American ethnic/"racial" minorities from a sociohistorical perspective. Focus is on understanding the reasons for, and the solutions to, problems relating to majority/minority relations.

0709 LEC SS210 VILLARREALA 3.40 3.0 TuTh 0230P-0355P

SOC 4 Sociology of Women and Men

Advisory: Eligible for English 250 and English 260.

Transferable: CSU; UC; CSU-GE: D0, D4; IGETC: 4J; GAV-GE: D2

Analysis of the nature of women's and men's traditional and changing roles in society including development of women's and men's potential, relationships in marriage, influence of mass media, employment practices, legal provisions and women's and men's liberation.

2179 LEC SS205 FAUTT M 3.40 3.0 M 0600P-0910P

SOC 10 Mass Media and Society

Advisory: English 250, English 260

Transferable: CSU; UC; CSU-GE: C2, D0; IGETC: 4J; GAV-GE: C2, D2

This course helps us understand the 20th century revolution in mass media by focusing on the history, economics and social impact of the newspaper, book publishing, magazine, film, television, public relations, advertising and music industries. We will study audience, propaganda and mass communication theory; we will discuss new technology, ethnic media in the U.S., ethical issues and attempts to regulate or control the media. Honors students will complete more in-depth analysis of media issues, and will finish a media-related research project. This course is also listed as JOUR 10. This course has the option of a letter grade or credit/no credit.

0748 LEC SS205 GUERRAZZI D 3.40 3.0 TuTh 0945A-1110A 25

SOC 21 Marriage and the Family

Advisory: Eligible for English 250 and English 260.

Transferable: CSU; CSU-GE: E2; GAV-GE: E2

Survey of information on preparation for marriage, including dating, courtship, engagement, mate selection, adjustment and parenthood. Time will also be spent on the study of families and how they function.

0710 LEC SS210 HINN G 3.40 3.0 TuTh 1120A-1245P

2180 LEC MHG5 BALES N 3.40 3.0 W 0600P-0910P

Above class meets at Morgan Hill Community site

SPAN 1A Elementary Spanish

Transferable: CSU; UC; CSU-GE: C2; GAV-GE: C2; CAN: SPAN 2, SPAN SEQ. A

Beginning course with emphasis on understanding and speaking Spanish; introduction to reading and writing Spanish. This course will also introduce students to Hispanic culture and institutions.

0711 L/L HOL5 PEREZ D 8.40 5.0 MTuWTh&2 0945A-1055A

Above class meets at the Hollister Briggs site

0712 L/L HU105 MARQUES A 8.40 5.0 MTuWTh&2 1120A-1230P

0713 L/L HU105 PEREZ D 8.40 5.0 MTuWTh&2 1255P-0205P

SPAN 1B Elementary Spanish

Advisory: Spanish 1A or equivalent.

Transferable: CSU; UC; CSU-GE: C2; IGETC: 6A; GAV-GE: C2; CAN: SPAN 4, SPAN SEQ. A

Continuation of Spanish 1A. Further development of the four skills of understanding, speaking, reading and writing Spanish. This course will continue to emphasize the study of Hispanic culture and institutions.

0714 L/L HU105 MARQUES A 8.40 5.0 MTuWTh&2 0820A-0930A

2182 LEC MHG11 LEMOS C 3.40 3.0 W 0630P-0940P

Above class meets at Morgan Hill Community site

SPAN 2A Intermediate Spanish

Advisory: Spanish 1B or equivalent.

Transferable: CSU; UC; CSU-GE: C2; IGETC: 3B; GAV-GE: C2; CAN: SPAN 8, SPAN SEQ. B

Review of basic structures through conversation and selected works of literature. Further expansion of patterns, vocabulary and idioms. Creative expression through discussion and composition.

0715 L/L HU105 MARQUES A 8.40 5.0 MTuWTh&2 0945A-1055A

SPAN 8A Conversational Spanish

Transferable: CSU; GAV-GE: C2

This course is a beginning Spanish course, focusing on the Spanish sound system, basic grammar and vocabulary, and cultural elements. Although emphasis is on listening and speaking, basic reading and writing skills will be developed.

2181 LEC HOL5 POLO I 3.40 3.0 M 0630P-0940P

Above class meets at the Hollister Briggs site

SPAN 8B Conversational Spanish

Advisory: Spanish 8A or equivalent.

Transferable: CSU; GAV-GE: C2

This course requires knowledge of Spanish pronunciation, basic vocabulary, and present tense grammar. More advanced grammar and vocabulary, and cultural elements will be taught in the development of listening, speaking, basic reading and writing skills.

2183 LEC HU103 STAFF 3.40 3.0 Th 0630P-0940P

SPAN 12A Spanish for Spanish Speakers

Advisory: Basic Spanish reading and writing skills.

Transferable: CSU; UC; CSU-GE: C2; GAV-GE: C2, F

Through comparative analysis of selected literary works, the course develops an awareness of cultural and literary contributions from Mexico and other Spanish speaking societies. The course is taught in Spanish with emphasis on composition as a medium of expression.

0716 L/L ONLINE PEREZ D 8.40 5.0 DHR 0000-0000 38



This online class will be delivered entirely over the internet. After enrolling, start the class by going to <http://www.gavilan.edu/disted/>, click on your class link, and email the instructor at dperez@gavilan.edu. Students who have not begun the class or contacted the instructor by 5 pm on Thursday, September 7 will be dropped from the class.

Be Aware

You MAY NOT take courses that overlap (courses that meet at the same day and time)!

Refer to "How to Use This Schedule" on page 35 for classroom locations.

Sect.	Type	Room	Instructor	Hrs.	Units	Days	Begin-End	Footnotes
SPAN 23 Independent Study								
<p>Required: The study outline prepared by the student and the instructor must be filed with the department and the dean. Transferable: CSU</p> <p>Designed to afford selected students specialized opportunities for exploring areas at the independent study level. The courses may involve extensive library work, research in the community, or special projects. May be repeated until six units of credit are accrued. This course has the option of a letter grade or credit/no credit.</p>								
0717	IND	HU110	MARQUES A	3.40	1.0	DHR	0000-0000	22
0718	IND	HU110	MARQUES A	6.80	2.0	DHR	0000-0000	22
0719	IND	HU105	PEREZ D	3.40	1.0	DHR	0000-0000	22

Speech: see Communications
Statistics: see Mathematics

THEATRE ARTS / DRAMA

THEA 1 Theatre History

Advisory: Eligible for English 250 and English 260.
Transferable: CSU; UC; CSU-GE: C1; IGETC: 3A; GAV-GE: C2, F

A survey of the history of theatrical performance, production and dramatic literature, including: early Greek, Roman, Asian, the Renaissance, Italian, English, modern European to contemporary American theatre.

0721	LEC	ONLINE	THOMPSON R	3.40	3.0	DHR	0000-0000	38
------	-----	--------	------------	------	-----	-----	-----------	----

This online class will be delivered entirely over the internet. After enrolling, start the class by going to <http://www.gavilan.edu/disted/>, click on your class link, and email the instructor at rthompson@gavilan.edu. Students who have not begun the class or contacted the instructor by 5 pm on Thursday, September 7 will be dropped from the class.

THEA 2A Children's Theatre Repertory

Advisory: None. May be taken out of sequence.
Transferable: CSU; GAV-GE: C1

This course focuses on formal dramatic presentations for child audiences. Activities will include acting, set design, costuming and makeup.

0722	L/L	TH125	STAFF	4.40	2.0	TuTh	0845A-1050A
------	-----	-------	-------	------	-----	------	-------------

THEA 2B Children's Theatre Repertory

Advisory: None. May be taken out of sequence.
Transferable: CSU; GAV-GE: C1

Preparation and performance of touring plays for young audiences. Special activities in creative dramatization, improvisation and script development will be studied.

0723	L/L	TH125	STAFF	4.40	2.0	TuTh	0845A-1050A
------	-----	-------	-------	------	-----	------	-------------

THEA 3 El Teatro Campesino

Advisory: Eligible for English 250 and English 260.
Transferable: CSU; UC; GAV-GE: C1

Reading, viewing and discussing the work of writer/director Luis Valdez and El Teatro Campesino (The Farmworkers Theatre) is the focus of this course. It traces the historical development of the theatrical company from its creation in 1965 to the present. Students will read actos, plays and view theatrical productions performed by El Teatro Campesino. This course has the option of a letter grade or credit/no credit.

0766	LEC/Online	CARDINALLI J	3.40	3.0	DHR	0000-0000	13 54
------	------------	--------------	------	-----	-----	-----------	-------

10/16/06 - 12/23/06 This HYBRID lecture/online class will be delivered partially over the internet. Students must attend a meeting on the first day of class (10/16) at 7:00 am in room TH125.

THEA 6 Introduction to Audio Production

Transferable: CSU

The theory and practice of audio techniques in radio, television, film and multimedia; including acoustics, audio language and terms, signal flow, use of microphones, use of mixers and related production equipment and the aesthetic aspects of sound mixing. Student will apply the learned materials to actual audio production.

0724	L/L	L1140	FRAZIER J	5.70	3.0	TuTh&2	0945A-1110A
------	-----	-------	-----------	------	-----	--------	-------------

THEA 7 Introduction to Theatre

Transferable: CSU; UC; CSU-GE: C1; IGETC: 3A; GAV-GE: C1

This learning experience examines how theatre productions are staged and created. Elements of theatrical production including: writing, producing, directing, designing, and acting will be explored.

0725	LEC	TH125	STAFF	3.40	3.0	MW	0945A-1110A
------	-----	-------	-------	------	-----	----	-------------

THEA 11 Dance and Movement for the Theatre

Transferable: CSU; UC; GAV-GE: C1

Introduction to basic dance, period movement, stage combat and mime techniques suitable for the performing arts. This course has the option of a letter grade or credit/no credit. May be repeated three times for credit.

0726	L/L	TH125	PALMA J	3.30	2.0	TuTh	1255P-0220P
------	-----	-------	---------	------	-----	------	-------------

THEA 12A Acting: History and Practice

Transferable: CSU; UC; CSU-GE: C1; GAV-GE: C1; CAN: DRAM 8

An introduction to the historical development of acting as a practice of human cultural expression. Students will acquire a vocabulary for theatre performance as an art form and analyze dramatic works in a historical context. Practice of basic acting concepts, character analysis, preparation and performances of monologues and scenes will be required in the course.

0727	L/L	TH125	STAFF	5.70	3.0	TuTh&2	1120A-0125P
------	-----	-------	-------	------	-----	--------	-------------

THEA 12B Acting Techniques

Advisory: Theatre Arts 12A.
Transferable: CSU; UC; GAV-GE: C1

Techniques for creating characterizations for performance. Various acting approaches will be examined through research, discussion and acting exercises. This course has the option of a letter grade or credit/no credit. May be repeated two times for credit.

0728	L/L	TH125	STAFF	4.40	2.0	TuTh	1120A-0125P
------	-----	-------	-------	------	-----	------	-------------

- SUMMER 2007 -
STUDY AND TRAVEL IN SPAIN
 JUNE 18 - JULY 27

Earn up to 6 units. Study the language and culture while living with a host family in Malaga, Spain.
 For information call Albert Marques at (408) 848-4794.

Act, sing, dance, perform, learn!
ENROLL in Theatre Arts Classes!

Thea. 2A/B
sects. 0722 & 0723

Children's Theatre Repertory
 Delight and perform educational shows for young audiences.

Plays under consideration:
 Cinderella • The Snow Queen • Treasure Island

Rehearsals on Tuesday and Thursday: 8:45 a.m.-10:50 a.m.
 Educational performances on Thursday and Friday beginning in November

Everyone is welcome!
 For more information, go to www.gavilan.edu/theatre

THEATRE ARTS

■ Fall 2006 Schedule

Sect.	Type	Room	Instructor	Hrs.	Units	Days	Begin-End	Footnotes	Sect.	Type	Room	Instructor	Hrs.	Units	Days	Begin-End	Footnotes
-------	------	------	------------	------	-------	------	-----------	-----------	-------	------	------	------------	------	-------	------	-----------	-----------

THEA 14 Stage Production

Advisory: Eligible for English 250 and English 260.
Transferable: CSU; UC; GAV-GE: C1

An individualized course in technical theatre production for the performing arts. Areas of study include: scenery, lighting, props, costumes, sound, make-up, public relations/box office management or stage management. May be repeated until a maximum of 9 units are accrued.

0773	LAB	TH125	STAFF	3.40	1.0	M&1.7	1255P-0220P	
0774	LAB	TH125	STAFF	6.80	2.0	MW	1255P-0400P	
0729	LAB	TH125	STAFF	10.10	3.0	MW&3.4	1255P-0400P	

THEA 17A Television and Video Workshop

Advisory: Theatre Arts 16 Intro to TV or consent of instructor.
Transferable: CSU; GAV-GE: C1

An introduction to television and video technology, including pre-production, production and post-production techniques such as: camera work, studio equipment, lighting, audio plus off-line and on-line editing.

0730	L/L	LI140	FRAZIER J	5.70	3.0	TuTh	1255P-0325P	
------	-----	-------	-----------	------	-----	------	-------------	--

THEA 17B Television and Video Workshop

Advisory: Completion of Theatre Arts 17A.
Transferable: CSU; GAV-GE: C1

Emphasis placed on production and post-production techniques in video production. Student knowledge and skills are increased by participating in live to tape projects. May be repeated twice for credit.

0731	LEC	LI140	FRAZIER J	5.70	3.0	TuTh	1255P-0325P	
------	-----	-------	-----------	------	-----	------	-------------	--

THEA 19 Television and Film Acting

Transferable: CSU; UC; GAV-GE: C1

Theory and practice of acting for film and television. Students will learn basic performance techniques for the camera. Learning experiences include projects in broadcasting, reporting, commercials, public service announcements (psa), comedy and drama. This course has the option of a letter grade or credit/no credit. May be repeated three times for credit.

0732	L/L	LI140	ABAD M	5.70	3.0	MW&2	0945A-1110A	
------	-----	-------	--------	------	-----	------	-------------	--

THEA 20 Introduction to Scriptwriting

Advisory: English 250
Transferable: CSU

An introductory course on script development, writing and formatting for broadcast television and film production. This course has the option of a letter grade or credit/no credit.

0756	LEC	ONLINE	ABAD M RICHARDS G	3.40	3.0	DHR	0000-0000	38
------	-----	--------	----------------------	------	-----	-----	-----------	----



10/16/06 - 12/23/06 This online class will be delivered entirely over the internet. After enrolling, start the class by going to <http://www.gavilan.edu/disted/>, click on your class link, and email the instructor at mabad@gavilan.edu. Students who have not begun the class or contacted the instructor by 5 pm on the 3rd day of class will be dropped from the class.

THEA 22 Field Work and Service

Required: Learning contracts must be filled out and signed by the student and the supervising instructor.

Transferable: CSU

Supervised field work within the college and with local agencies. Students serve in useful group activities in leadership roles prescribed for them by faculty or community agencies. A maximum of six units may be completed. This is a credit/no credit course.

0733	FEX	TH125	ABAD M	1.70	.5	DHR	0000-0000	21
0734	FEX	TH125	THOMPSON R	1.70	.5	DHR	0000-0000	21
0735	FEX	LI140	THOMPSON R	1.70	.5	DHR	0000-0000	21
0736	FEX	TH125	THOMPSON R	1.70	.5	DHR	0000-0000	21

THEA 23 Independent Study

Required: The study outline prepared by the student and the instructor must be filed with the department and the dean.

Transferable: CSU

Designed to afford selected students specialized opportunities for exploring areas at the independent study level. The courses may involve extensive library work, research in the community, or special projects. May be repeated until six units of credit are accrued. This course has the option of a letter grade or credit/no credit.

0737	IND	TH125	ABAD M	6.80	2.0	DHR	0000-0000	22
0738	IND	TH125	ABAD M	6.80	2.0	DHR	0000-0000	22
0739	IND	LI140	FRAZIER J	3.40	1.0	DHR	0000-0000	22
0740	IND	LI140	FRAZIER J	6.80	2.0	DHR	0000-0000	22
0741	IND	TH125	PALMA J	3.40	1.0	DHR	0000-0000	22
0742	IND	TH125	PALMA J	6.80	2.0	DHR	0000-0000	22

THEA 98 Special Topics - GavTV Channel 18

Transferable: CSU

Special topics courses examine current problems or issues of interest to students within a specific discipline area. For topical content information, consult with the appropriate department chairperson. For transfer status, check with a counselor. This course may have the option of a letter grade or credit/no credit.

0743	LEC	LI140	ABAD M	1.70	2.0	Tu	1120A-1225P	
0744	LEC	LI140	ABAD M	3.40	3.0	Tu	1120A-1225P	

VOCATIONAL PREPARATION FOR DISABLED

AE 600 Vocational Training I

Transferable: No

Prevocational skills for adults with impaired cognitive functioning. Entry level work preparation is emphasized. Skills taught include basic work routine orientation, communication skills, job ability assessment, and self-management skills.

0010	LAB	LI204	FRANKLIN L	33.80	.0	DHR	0000-0000	75
0011	LAB	HOPE-G	MERRILL	33.80	.0	DHR	0000-0000	75 63
See Footnote: Above class meets Off Campus								
0012	LAB	HOPE-H	BROWNC	2.00	.0	DHR	0000-0000	75 51
See Footnote: Above class meets Off Campus								
0013	LAB	MHG10	MERRILL	4.00	.0	M	0900A-0100P	75
Above class meets at Morgan Hill Community site								
0014	LAB	LI117	BROWNC MERRILL	7.00	.0	W	0910A-0400P	75
0015	LAB	LI171	SATO K	2.00	.0	TuTh	0900A-1000A	75
0016	LAB	APE101	SATO K	2.00	.0	TuTh	1010A-1110A	75
0017	LAB	APE120 APE121	BROWNC BROWNC	2.00	.0	TuTh	1120A-1225P	75

AE 602 Vocational Training III

Transferable: No

Practical training and on-the-job work experience for students with disabilities. This course also provides preparation for entry level employment utilizing a number of work alternatives and settings.

0018	LAB	HOPE-G	MERRILL	33.80	.0	DHR	0000-0000	75 63
See Footnote: Above class meets Off Campus								
0019	LAB	HOPE-H	SATO K	33.80	.0	DHR	0000-0000	75 51
See Footnote: Above class meets Off Campus								
0020	LAB	LI204	FRANKLIN L	33.80	.0	DHR	0000-0000	75

Sect.	Type	Room	Instructor	Hrs.	Units	Days	Begin-End	Footnotes
-------	------	------	------------	------	-------	------	-----------	-----------

Sect.	Type	Room	Instructor	Hrs.	Units	Days	Begin-End	Footnotes
-------	------	------	------------	------	-------	------	-----------	-----------

AE 603 Vocational Training IV

Transferable: No

AE 603 is a job readiness course which provides opportunities for individuals with disabilities to participate in service-learning activities and job readiness training leading to job development and placement in a community setting.

0021	L/L	SS110	FRANKLIN L	3.40	.0	W	0945A-1255P	75
0768	L/L	MHG4	MERRILL STAFF	3.40	.0	F	0945A-1255P	75 65

See Footnote: Above class meets Off Campus

AE 605 Vocational Training VI

Transferable: No

This course is designed for students with disabilities. The purpose of this course is to improve the student's ability to participate in the community, by increasing independence through acquisition of survival vocabulary, structured practice in functional reading utilizing phonics and content recognition, and increased enjoyment in reading for pleasure. Opportunities will be provided for oral reading of high interest-low reading level life experience stories written or revised specifically for adults with limited reading skills.

0022	L/L	BU117	BROWN C	1.60	.0	Th	1255P-0200P	75
------	-----	-------	---------	------	----	----	-------------	----

AE 613 Independence Training IV

Transferable: No

This course is designed for students with disabilities. The purpose of this course is to improve the student's ability to build math competencies related to independence in daily living and the work site. The focus of the class is basic computation, consumer awareness, money management, banking and purchasing.

0023	L/L	BU117	BROWN C	1.60	.0	Tu	1255P-0200P	75
------	-----	-------	---------	------	----	----	-------------	----

AE 636 Adapted Physical Education

Advisory: Students must be able to document a physical disability.

Transferable: No

An individualized program of adapted physical education activities designed to meet the needs of students who are physically limited or disabled. The course assists in the development and appreciation of physical activity as a regular planned contribution to one's overall well-being. This course is for the non-matriculating student, is not graded and is without college credit.

0024	LAB	LOADCS	CRETINA	3.40	.0	MW	0930A-1055A	75 90 70
See Footnote: Above class meets Off Campus								
0025	LAB	LOADCS	CRETINA	3.40	.0	TuTh	0945A-1110A	75 90 70
See Footnote: Above class meets Off Campus								
0026	LAB	HOLLCC	CRETINA	3.40	.0	MW	1120A-1245P	75 90 68
See Footnote: Above class meets Off Campus								
0745	LAB	LOADCS	MARINGER J	1.00	.0	F	1000A-1100A	75 90 70
09/08/06 - 12/15/06								

Word Processing: see CSIS

**Campus under construction
ROOM NUMBERS MAY CHANGE!**

Check room numbers online before your first class.

WORK EXPERIENCE

CWE 190 Occupational Work Experience

Required: Declared vocational major. Concurrent enrollment in seven or more units (including CWE units, except for summer school. For summer school, enrollment in one other class is required). Minimum 2.00 G.P.A.

Transferable: CSU

Occupational work experience for students who have a job related to their major. A training plan is developed cooperatively between the employer, college and student. (CR/NC grading) 75 hours per semester paid work = 1 unit. 60 hours non-paid (volunteer) work per semester = 1 unit. May be taken for a maximum total of 16 units.

0242	WEX	BU125	KERR L	5.60	1.0	TBA	0000-0000	16
See Footnote: Above class meets Off Campus								
0243	WEX	BU125	KERR L	11.30	2.0	TBA	0000-0000	16
See Footnote: Above class meets Off Campus								
0244	WEX	BU125	KERR L	16.90	3.0	TBA	0000-0000	16
See Footnote: Above class meets Off Campus								
0245	WEX	BU125	KERR L	22.50	4.0	TBA	0000-0000	16
See Footnote: Above class meets Off Campus								

CWE 192 General Work Experience Education

Required: Concurrent enrollment in seven or more units (including CWE units, except for summer school. For summer school, enrollment in one other class is required) Minimum 2.00 G.P.A.

Transferable: CSU

General work experience for students who have a job unrelated to their major. General work experience is supervised employment which is intended to assist students in acquiring desirable work habits, attitudes and career awareness. A training plan is developed cooperatively between the employer, college and student. (CR/NC grading) 75 hours per semester paid work = 1 unit. 60 hours non-paid (volunteer) work per semester = 1 unit. May be taken for a maximum of 16 units.

0246	WEX	BU125	KERR L	3.40	1.0	DHR	0000-0000	16
See Footnote: Above class meets Off Campus								
0247	WEX	BU125	KERR L	6.80	2.0	DHR	0000-0000	16
See Footnote: Above class meets Off Campus								
0248	WEX	BU125	KERR L	10.10	3.0	TBA	0000-0000	16
See Footnote: Above class meets Off Campus								

GAVTV 18
What is  The Gavilan Educational Station

Be a part of the cameras, lights, action. Enroll in:

THEA 6	Introduction to Audio Production
THEA 17A/B	Television and Video Workshop
THEA 19	Television and Film Acting
THEA 20	Introduction to Scriptwriting



Get Involved!
Sign up for

THEA 98 - GAVTV 18

- Learn all aspects of TV programming
 - Be a studio production crew member
 - Produce and create your own GAV-TV program
- 2 Sections - see class listing on page 106.

For more information call Executive Producer Marilyn Abad-Cardinalli at 408-848-4764 or visit www.gavilan.edu click on GavTV 18.