

Gavilan Community College Student Profile Report Spring 12

Report Highlights:

- ❖ In *Spring 12*, student headcount decreased slightly to 5,794 from *Spring 11* at approximately the same point in the term (See Table 1). Seatcount also decreased to 16,762, a .99% decrease from the previous Spring term (See Table 1). These decreases suggest that the dramatic enrollment and headcount increases of the previous academic years may have stabilized.
- ❖ The proportion of students who reported being Hispanic increased to 54.18% (See Table 2). This increase reflects a long term trend that has seen an increase in the proportion of Hispanic students (See Diagram 2).
- ❖ The proportion of the student population who reported being over 30 dropped to 28%, a 7.5% decrease from Spring 11. The mean age correspondingly dropped 2.8% to 27.8 (See Table 6).
- ❖ The proportion of enrollments who reported as their educational goal, *degree/certificate* and/or *transfer* increased to 73.34%, a 4.5% increase from the previous Spring term (See Table 7).
- ❖ The proportion of enrollments that were distance education increased from the previous Spring term to 11.6% (See Table 9). This increase is in contrast to the drop in distance education FTES seen in the 10/11 academic year (See Diagram 5).
- ❖ The number of non-credit enrollments rebounded 28% from the previous Spring term. According to the non-credit office, this increase is likely due to additional outreach and recruitment conducted in preparation for this term (See Table 13).

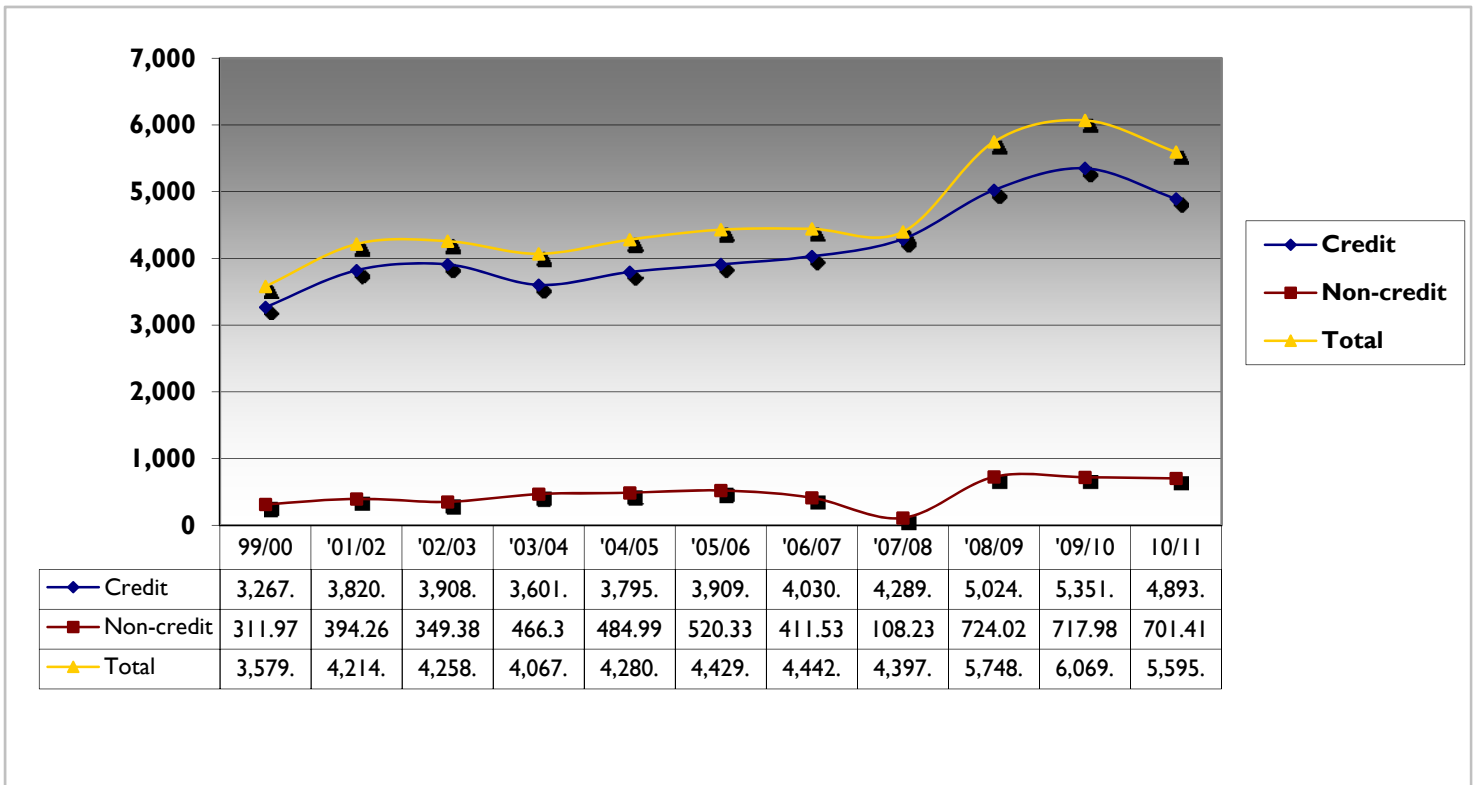
Table I: Total seatcount and headcount comparison.

Term	SeatCount	Headcount
Spring 11	16,930	5,869
Spring 12	16,762	5,794
% Change	-.99%	-1.28%

Note: **Seatcount** is also known as "enrollment" and is defined as the number of seats filled at an institution. For each course, enrollment is counted separately. So, a student who is taking 4 courses one term would be counted four times.

Headcount is the number of students enrolled. Each student who comes in the door counts as one, regardless of the number of units in which that students is enrolled.

Diagram I: Annual Full Time Equivalent Students (FTES) over time.



Note: FTES is calculated by summing the "Total Hours" in all the enrollment records during the time period, then dividing by 525.

Diagram 2: Student ethnic distribution by term (percentages).

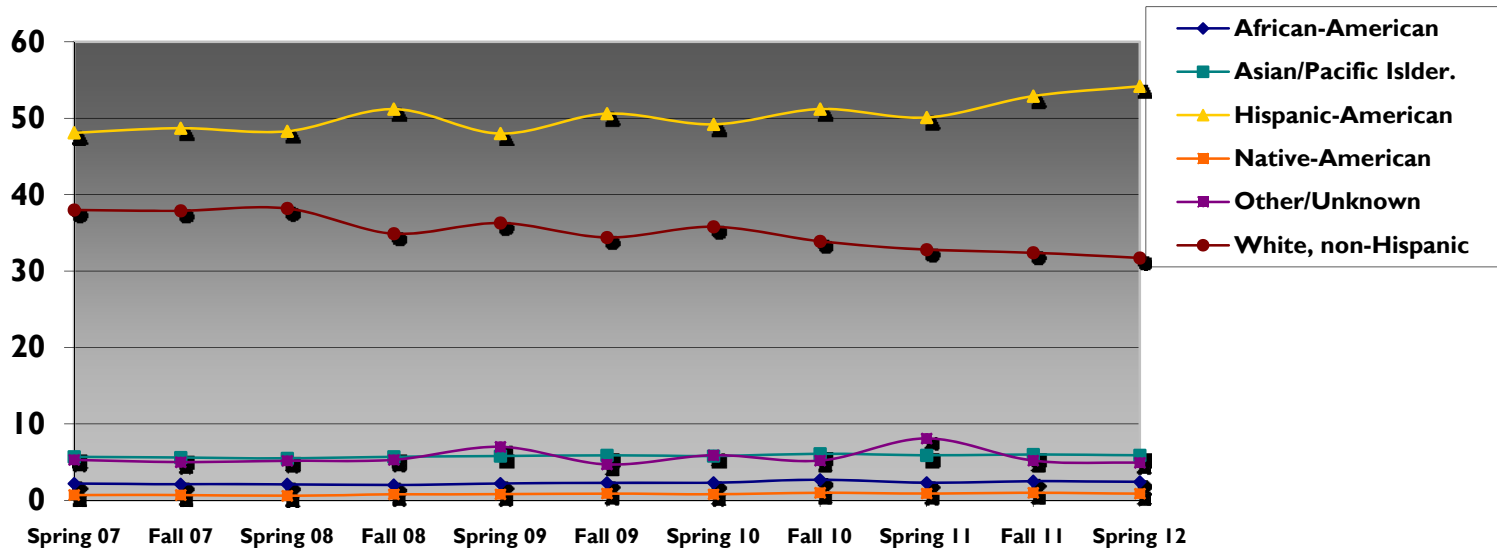


Table 2: Student ethnic distribution over time (percentages).

Ethnicity	Spring 07	Fall 07	Spring 08	Fall 08	Spring 09	Fall 09	Spring 10	Fall 10	Spring 11	Fall 11	Spring 12
African-American	2.2	2.1	2.1	2.0	2.2	2.3	2.3	2.7	2.3	2.5	2.42
Asian/Pacific Islder.	5.7	5.6	5.5	5.7	5.8	5.9	5.8	6.1	5.9	6.0	5.90
Hispanic-American	48.1	48.7	48.3	51.2	48.0	50.6	49.2	51.2	50.1	52.9	54.18
Native-American	0.7	0.7	.6	.8	.8	.9	.8	1.0	0.9	1.0	0.88
Other/Unknown	5.3	5	5.17	5.3	7.0	4.7	5.9	5.2	8.1	5.2	4.92
White, non-Hispanic	38	37.9	38.2	34.9	36.3	34.4	35.8	33.9	32.8	32.4	31.71

Table 3: Student ethnic distribution (count).

Ethnicity	Spring 12
African-American	140
Asian/Pacific Islder.	342
Hispanic-American	3139
Native-American	51
Other/Unknown	285
White, non-Hispanic	1837

Diagram 3: Student gender distribution over time (percentages).

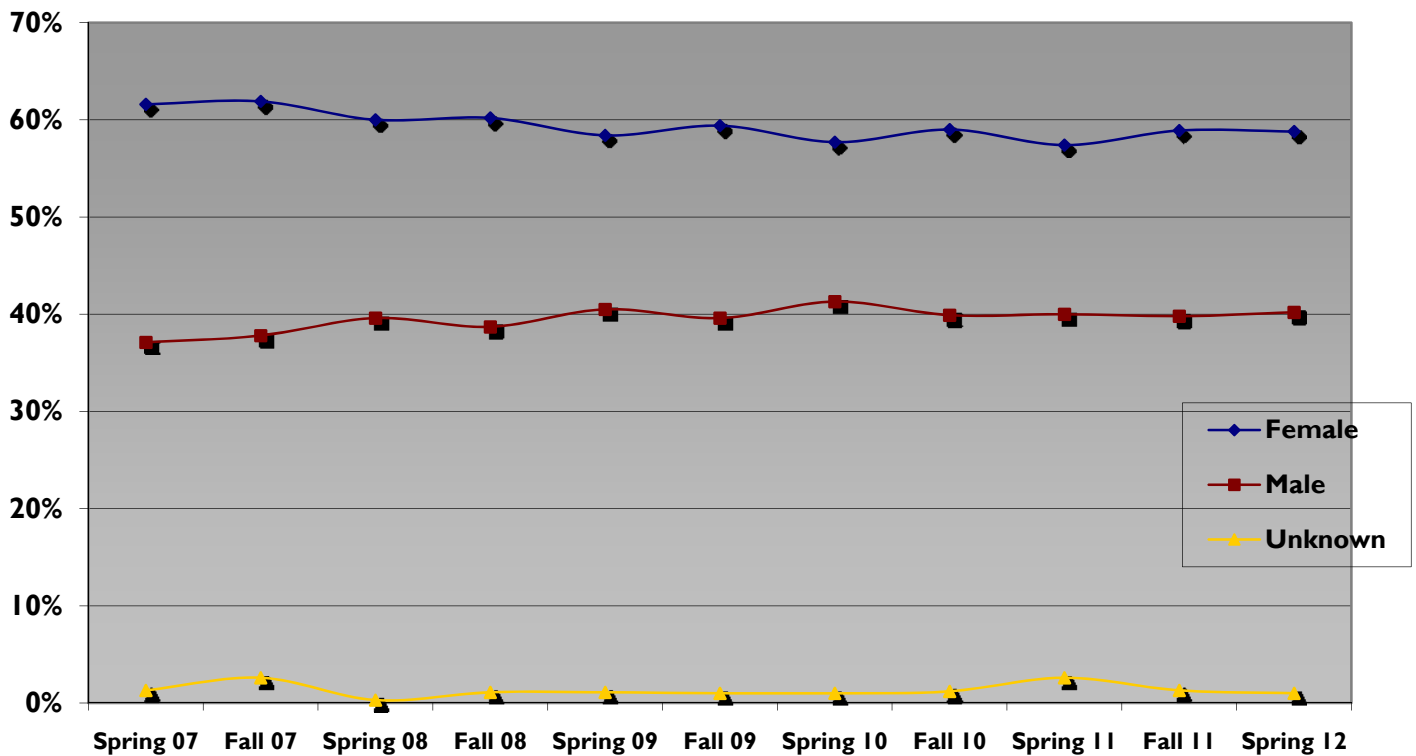


Table 4: Student gender distribution over time (percentages).

	Spring 07	Fall 07	Spring 08	Fall 08	Spring 09	Fall 09	Spring 10	Fall 10	Spring 11	Fall 11	Spring 12
Female	61.6%	61.9%	60.0%	60.2%	58.4%	59.4%	57.7%	59.0%	57.4%	58.9%	58.8%
Male	37.1%	37.8%	39.6%	38.7%	40.5%	39.6%	41.3%	39.9%	40.0%	39.8%	40.2%
Unknown	1.3%	2.6%	.3%	1.1%	1.1%	1.0%	1.0%	1.2%	2.6%	1.3%	1.0%

Table 5: Student gender distribution (count).

	Spring 11
Female	3406
Male	2328
Unknown	60

Table 6: Student age distribution and mean change from Spring 10 to Spring 11.

	Mean	<18	18-20	21-25	26-30	31-40	41-50	51-60	>60
Spring 11	28.6	5.0%	31.7%	23.1%	10.0%	12.4%	9.1%	5.2%	3.5%
Spring 12	27.8	5.4%	30.9%	25.4%	10.4%	12.3%	8.6%	4.5%	2.6%
Number		315	1,788	1,470	604	711	498	259	149
% Change	-2.8%	8.0%	-2.5%	9.9%	4.0%	-8%	-5.5%	-13.4%	-25.7%

Table 7: Student Educational Goal distribution (percentages).

	Spring 11	Spring 12	% Change
AA/AS/Certificate only	18.27	19.90	8.9%
Transfer only	7.22	7.34	1.7%
Degree/Certificate and transfer	43.40	46.10	6.2%
Job/Career Skills	14.43	13.27	-7.8%
Personal Interests	8.06	7.32	-9.2%
Other/Undecided	6.58	6.08	-7.6%

Table 8: Student status distribution*.

Term	Part Time	Full-time
Spring 11	65.4%	34.6%
Spring 12	67.9%	32.1%
Number	3973	1857
% Change	3.8%	-7.2%

* Less than 12 units is part time status.

Table 9: Percentage distribution of seatcount by sites.

	Aviation	Distance Ed	Gilroy	Hollister	Morgan Hill	Off Campus
Spring 11	0.00%	8.68%	72.44%	9.04%	7.42%	2.41%
Spring 12	0.00%	9.69%	70.73%	8.13%	6.92%	4.51%
Number	0	1838	15,337	1,914	1,571	511
% Change	0%	11.6%	-2.3%	-10.1%	-6.7%	87.1%

Diagram 4: Student enrollment status distribution over time (percentages).

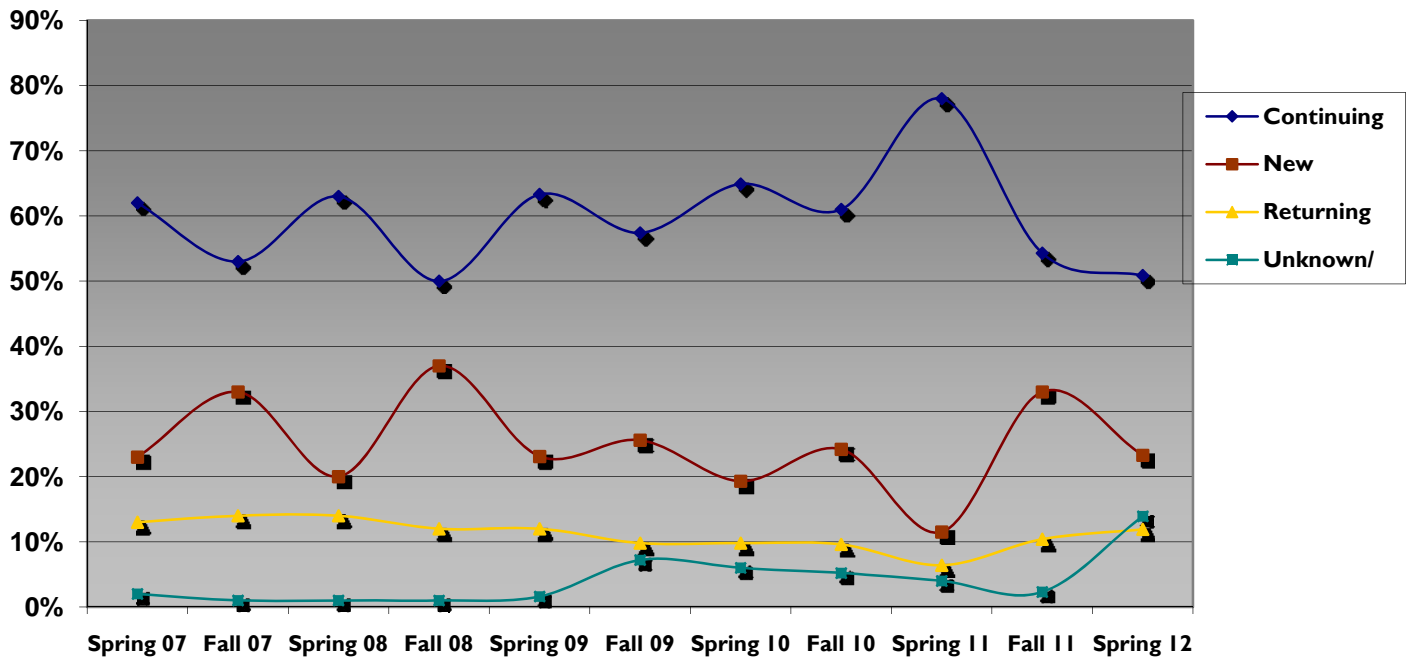


Table 10: Student enrollment status distribution over time (percentages).

	Spring 07	Fall 07	Spring 08	Fall 08	Spring 09	Fall 09	Spring 10	Fall 10	Spring 11	Fall 11	Spring 12
Continuing	62%	53%	63%	50%	63.3%	57.4%	64.9%	61.0%	78.0%	54.3%	50.85%
New	23%	33%	20%	37%	23.1%	25.6%	19.3%	24.2%	11.5%	33.0%	23.28%
Returning	13%	14%	14%	12%	12.0%	9.8%	9.8%	9.6%	6.4%	10.4%	11.91%
Unknown/NA	2%	1%	1%	1%	1.6%	7.2%	6.0%	5.2%	4.0%	2.3%	13.92%

Note: Continuing student: A student who is enrolled in the current session and who was enrolled in the previous regular session. **New student:** student enrolled in any college for the first time after High School. Also, a student enrolled at the reporting college for the first time and who transferred from another institution of higher education. **Returning student:** A student who has previously attended the reporting college, transferred to another college, and has now returned to the reporting college. Also, a student enrolled at the reporting college after an absence of one or more regular sessions without interim attendance at another college. **Unknown:** No known data for the student.

Table 11: Enrollment time distribution

	Day	Evening	Hours by arrangement	Distance Ed
Spring 11	73.13%	17.45%	0.73%	8.68%
Spring 12	73.14%	16.58%	0.48%	9.78%
Number	12,096	2,743	80	1,619
% Change	0.0%	-5.0%	-34.2%	12.7%

Diagram 5: Distance Education FTES over time.

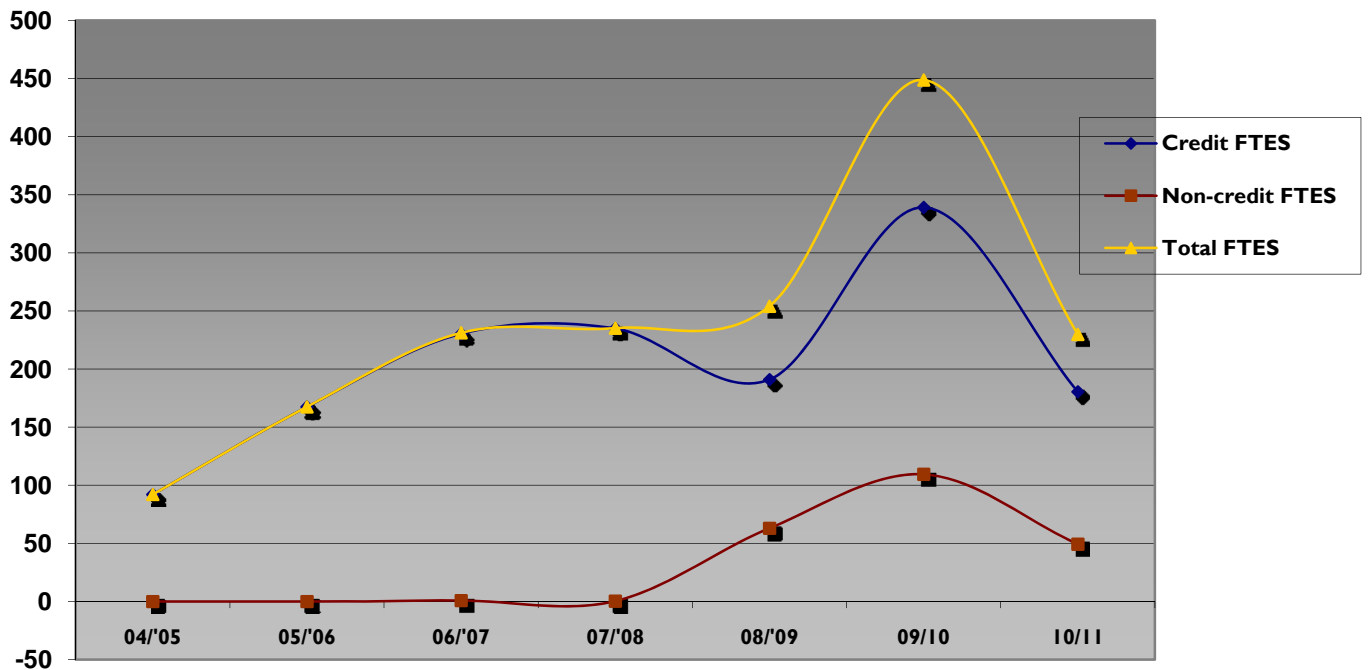


Table 12: Distance Education Annual FTES over time.

	04/05	05/06	06/07	07/08	08/09	09/10	10/11
Credit FTES	92.06	167.48	230.39	234.94	190.99	339.23	180.52
Non-credit FTES	0	0	.82	.31	63.09	109.58	49.39
Total FTES	92.06	167.48	231.21	235.25	254.08	448.81	229.91

Table 13: Non-credit student characteristics.

	Spring 11	Spring 12	% Change
Gender			
Female	71.7%	68.3%	-4.7%
Male	27.5%	30.9%	12.6%
Unknown	.8%	.8%	0%
Age (Mean)	39.4	35.5	-9.8%
Ethnicity			
African-American	1.8%	1.2%	33.3%
Asian-Pac. Islndr-Am.	3.4%	3.4%	0.0%
Hispanic-American	71.7%	78.6%	9.6%
Native-American	0%	.6%	100%
Other/Unknown	6.5%	4.0%	-38.5%
White, non-Hispanic	16.6%	12.1%	-27.1%
Total	385	495	28.6%