

Jesus Olivas

From: "Jesus Olivas" <jolivas@gavilan.edu>
To: <faculty@gavilan.edu>
Cc: "John Pruitt" <jpruitt@gavilan.edu>; "Kathleen Rose" <krose@gavilan.edu>; "Sherrean Carr" <scarr@gavilan.edu>; "Frances Lozano" <flozano@gavilan.edu>
Sent: Thursday, September 17, 2009 11:45 AM
Attach: Spring '09 Articulation Update.doc
Subject: Spring '09 Articulation Update

Attached you will find a summary of all the articulation issues I was able to process during this past Spring and Summer semesters.

The one issue that will need further discussion by the curriculum committee and especially the Business Department faculty, is whether or not to implement a MATH 233 (Intermediate Algebra) prerequisite to both our ECON 1 and 2 courses. As you may already know, the California State University has decided to substitute the California Number System (CAN) with a program called **Lower Division Transfer Pattern *(LDTP)**. Now that they are reviewing all of our courses to approve for LDTP articulation, some CSU faculty have decided to place new prerequisites on certain courses including ECON 1 and 2 in this case.

Our concern at Gavilan College, and at most community colleges, is that students have been generally successful in these courses without having previously taken an intermediate algebra course. At present, our students have the choice of taking an ECON course just to satisfy a general education area, and not necessarily because they are business majors. In addition, this policy may hold back some of our business major students who do not have the intermediate algebra skills upon entering Gavilan College. Finally, only four or five (East Bay, Fresno State, Long Beach and San Diego State) are requiring this prerequisite, all the other campuses will accept both of our courses without prerequisites. See you at curriculum committee!

I want to thank all those in the curriculum committee and all the faculty members who have so generously supported and assisted me in the articulation effort during this past year.

Sincerely,

Jesse
Articulation Officer/Counselor

*** I will provide an LDTP update later in the semester.**

9/17/2009

ARTICULATION UPDATE

Summary of articulation issues processed during the Spring and Summer 2009 semesters.

A. Submitted additional number of courses to the following State Universities in order to expand our existing articulation:

CSU Dominguez Hills	21 courses
CSU Long beach	34 “
CSU Sacramento	59 “
CSU Chico	8 “
CSU Northridge	12 “
CSU Stanislaus	10 “
CSU Bakersfield	27 “
Humboldt State	16 “
San Francisco State	36 “
San Jose State	16 “

B. Also submitted additional courses to update our existing University of California (UC) agreements:

UC Davis	15 courses
UC Santa Barbara	7 “
UC Riverside	6 “
UC Santa Cruz	6 “
UC Berkeley	11 “
UC Los Angeles	7 “
UC San Diego	22 “

C. The following universities have finally agreed to process agreements with Gavilan College:

CSU Fullerton	(In progress)
CSU San Marcos	(In progress)
Sonoma State	(In progress)
UC Merced	(In progress)

D. Updated the following private university agreements:

Brigham Young University (BYU)
National University
University of the Pacific (UOP)
University of Phoenix
Golden Gate University

E. Submitted the following courses to UC for approval and inclusion on the Transfer Course Agreement (TCA) list:

CHN 1A, CHN 1B, CSIS 2 (I am resubmitting this course), FRNH 2A, MUS 2, PE 13B, and PE 81.

F. The following will be submitted to CSU in December for approval, to be included on the California State University CSU-GE Breadth pattern:

<u>Course</u>	<u>Proposed CSU-GE Breadth area</u>
CHN 1A, 1B, FRNH 2A,	C-2 (Humanities)
MUS 2	C-1 (Arts)
PE 63, 81	E

G. Once approved by UC, The following will be submitted for approval to the Intersegmental General Education Transfer Curriculum (IGETC) committee for approval to the IGETC pattern:

<u>Course</u>	<u>Proposed IGETC GE area</u>
CHN 1A, 1B, FRNH 2A	6A Foreign Language
FRNH 2A	3B Humanities
MUS 2	3A

Finally, I submitted/reported all curriculum changes approved by the curriculum committee during Spring 2009, to the ASSIST System. I also updated the AA/AS, CSU GE-Breadth, and IGETC general education pattern student handouts (copies are available in the counseling department).

Please feel free to e-mail or call me at X 4826 if you have any questions.

9/17/09



Institution: **Gavilan College**

Articulation Officer: **Jesus Olivas** OSCAR Cycle: **2009** (year that outlines were entered into OSCAR)

Select a Prefix

PDF Reports

- All Outlines
- UC TCA
- IGETC
- CSU GE-B
- CSU AI
- LDTP TCSU

UC TCA Guidelines

- IGETC Guidelines
- CSU GE-B Guidelines
- LDTP TCSU Guidelines
- ASSIST

Select a Summary

Course Name	Title	Units	Outlin Cmpht	UC TCA Action	Requested IGETC Action	Requested CSU GE-B Action	Requested CSU AI Action	Requested LDTPT	TCSU Action
<input type="button" value="Edit"/> <input type="button" value="Print"/>	CHN 1A	(5.00)	Y	Add	6A (Add)	C2 (Add)			
<input type="button" value="Edit"/> <input type="button" value="Print"/>	CHN 1B	(5.00)	Y	Add	6A (Add)	C2 (Add)			
<input type="button" value="Edit"/> <input type="button" value="Print"/>	CSIS 2	(4.00)	Y	Add					
<input type="button" value="Edit"/> <input type="button" value="Print"/>	ENGR 4	(3.00)	Y	Add					TCSU ENGR 110 (Add)
<input type="button" value="Edit"/> <input type="button" value="Print"/>	FRNH 1B	(5.00)	Y	Add					
<input type="button" value="Edit"/> <input type="button" value="Print"/>	FRNH 2A	(5.00)	Y	Add	3B (Add)	6A C2 (Add)			
<input type="button" value="Edit"/> <input type="button" value="Print"/>	JPN 1B	(5.00)	Y	Add					
<input type="button" value="Edit"/> <input type="button" value="Print"/>	MATH 5	(3.00)	Y	Add					TCSU STAT 110 (Add)
<input type="button" value="Edit"/> <input type="button" value="Print"/>	MUS 2	(3.00)	Y	Add	3A (Add)	C1 (Add)			
<input type="button" value="Edit"/> <input type="button" value="Print"/>	PE 13B	(2.00)	Y	Add					
<input type="button" value="Edit"/> <input type="button" value="Print"/>	PE 6S	(0.50-1.00)	Y	Add					E (Add)
<input type="button" value="Edit"/> <input type="button" value="Print"/>	PE 81	(0.50-1.00)	Y	Add					E (Add)
<input type="button" value="Edit"/> <input type="button" value="Print"/>	PHIL 9	(3.00)	N						

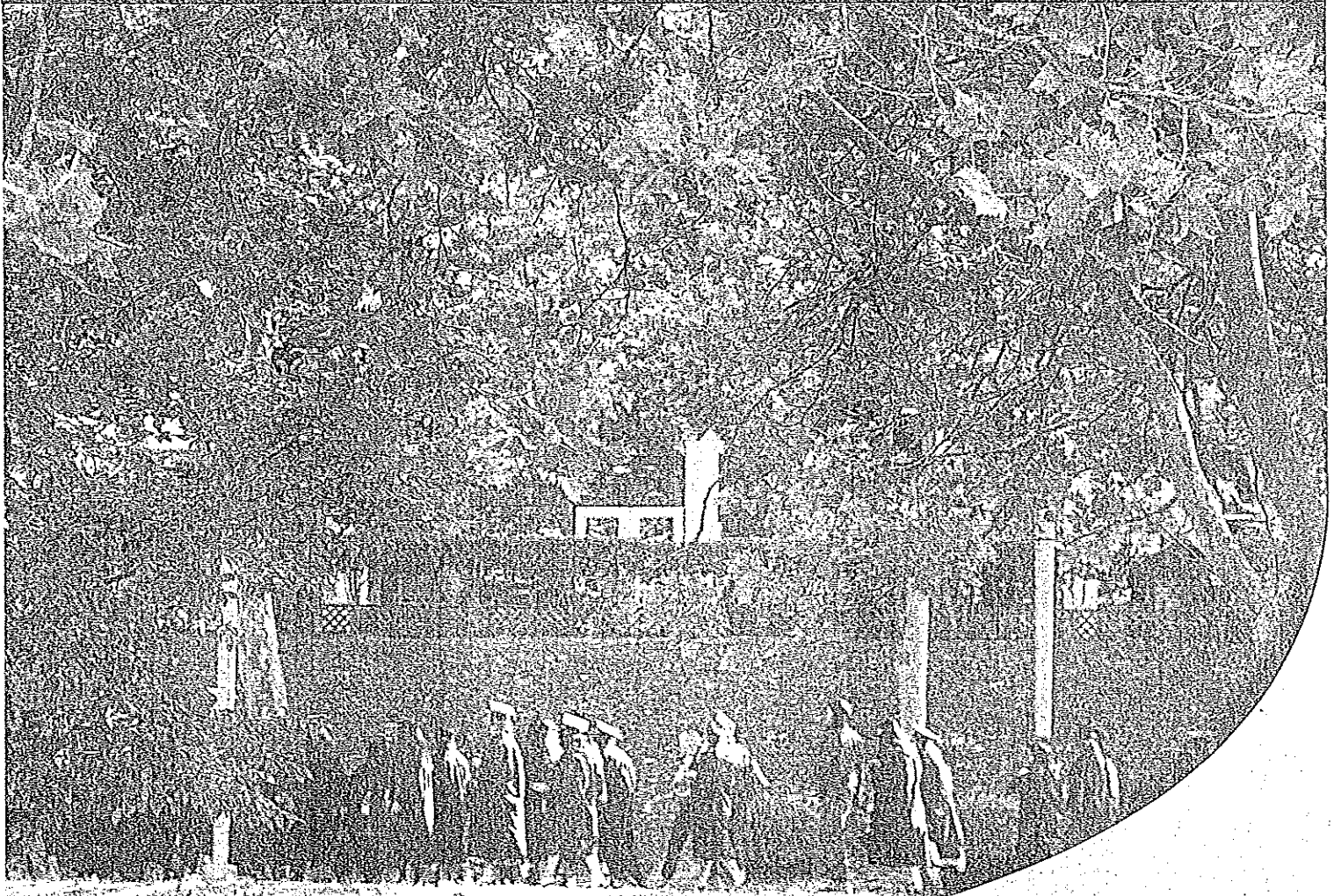


2009-2010

CSU GE-Breadth Transfer Pattern

GAVILAN COLLEGE

Gavilan Joint Community College District



5055 Santa Teresa Blvd. Gilroy, CA 95020

www.gavilan.edu

(408) 848-4800

General Education (Breadth) Requirements

CSU

Gavilan College
2009 - 2010

Students transferring to the California State University system will qualify for admission as upper division transfers if they have completed (60) transferable units with a GPA of 2.0 ("C") or better (non-residents 2.4 or better). Within the (60) unit requirement, the (9) units in Area A, Area B-4 (Mathematics), and (18) additional semester units of general education coursework must be completed with a grade of 2.0 or better in each course. Students who complete the following pattern will have satisfied the lower division General Education requirements for the California State University BA / BS degree. A minimum of (9) semester units of General Ed coursework must be completed at the upper division level after transfer; some CSU campuses require more than (9) units. (See a counselor for further information.)

(Students should request a general education certification from the office of Admissions and Records before transferring.)

AREA A		B - 2 Life Science		ART 6 Art Appreciation (3)			
ENGLISH LANGUAGE COMMUNICATION AND CRITICAL THINKING Select one course from each category. All course must be completed with a grade of "C" or better. 9 semester units or 12-15 quarter units		ANTH 1	Intro to Physical Anthropology (3)	ART 8A	Beginning Photography From Analog to Digital (3)		
		ECOL 1	Conservation of Natural Resourc (4)	ART 10A	Cultural History of Ceramics (3)		
		BIO 1	General Biology (4)	ART 13	Three Dimensional Design (3)		
A - 1 Oral Communications CMUN 1A Introduction to Public Speaking (3) CMUN 5 Fundamentals of Comm Studies (3) CMUN 8 Interpersonal Communication (3) CMUN 10 Small Group Communication (3)		BIO 4	General Zoology (4)	ART 14	Beginning Mural Painting (3)		
		BIO 5	General Botany (4)	ART 21	Ancient Americas: A History Through Art (3)		
		BIO 7	Human Anatomy (4)	HIST 21	Ancient Americas: A History Through Art (3)		
		BIO 8	General Microbiology (5)	ART 25A	Art Methods (3)		
		BIO 9	Human Physiology (5)	CD 25A	Art Methods (3)		
		BIO 10	Principles of Biology (4)	CMUN 2	Oral Reading (3)		
		BIO 13	Marine Biology (4)	THEA 4	Oral Reading (3)		
		BIO 15	Survey of Human Anatomy and Physiology (5)	HUM 6	Foreign Cinema (3)		
		A - 2 Written Communication ENGL 1A Composition (3)		B - 3 Laboratory Activity See Areas B - 1 and B - 2 above		HUM 10	Approaches to Contemporary Film (3)
				B - 4 Mathematics/Quantitative Reasoning Grade "C" or better is required.		MUS 1A, B	Music, History, and Literature (3)
A - 3 Critical Thinking ENGL 1C Critical Reasoning and Writing (3) PHIL 2 Logic (3) PHIL 4 Critical Thinking and Writing (3)		MATH 1A, B	Single-Variable Calculus and Analytic Geometry (4)	MUS 3A	Harmony-Theory-Musicianship (4)		
		MATH 1C	Multivariable Calculus (4)	MUS 4A	Beginning Piano (3)		
		MATH 2	Linear Algebra (3)	MUS 6	Introduction to World Music ** (3)		
		MATH 2C	Differential Equations (3)	THEA 1	Theater History (3)		
		MATH 5	Introductions to Statistics (3)	THEA 3	El Teatro Campesino (3)		
		MATH 6	Calculus for Bus / Social Science (3)	THEA 7	Theater Appreciation (3)		
		MATH 7	Finite Mathematics (3)	THEA 12A	Acting: History and Practice (3)		
		MATH 8	Precalculus (5)	THEA 20	Introduction to Script Writing (3)		
		MATH 8A	First Half of Precalculus (4)	C - 2 Humanities (Literature, Philosophy, Foreign Language)			
		MATH 8B	Second Half of Precalculus (4)	ART 11	Creativity, Imagination, & Innovator (3)		
AREA B SCIENTIFIC INQUIRY AND QUANTITATIVE REASONING One course from each category. The Physical or Life Science course must include a laboratory (indicated in BOLD). 9 semester units or 12-15 quarter units		MATH 12	Math for Elementary Teachers (3)	ART 21	Ancient Americas: A History Through Art (3)		
		MATH 14	Math for the Liberal Arts (3)	HIST 21	Ancient Americas: A History Through Art (3)		
		CSIS 26	Discrete Math (4)	ENGL 2A	Introduction to Poetry (3)		
		ECON 11	Statistics for Bus and Econ (4)	ENGL 2B	Introd to Multi-Cultural Literature (3)		
		GBUS 11	Statistics for Bus and Econ (4)	ENGL 2C	Intro to Film and Fiction (3)		
		AREA C ARTS AND HUMANITIES Required: English 1B, one course from C-1 and one course from C-2. 9 semester units or 12-15 quarter units		C - 1 Arts (Art, Dance Music, Theater) Minimum of 2 units from one of these courses.		ENGL 2E	Introduction to Women Writers (3)
				ART 1A, B	Art History (3)	ENGL 2F	Children's Literature (3)
				ART 2A	Two Dimensional Design (3)	ENGL 2H	Mexican-American Literature (3)
				ART 3A	Drawing and Composition (3)	ENGL 2J	Mythology (3)
				B - 1 Physical Science ASTR 1 Intro to General Astronomy (3) CHEM 1A, B General Chemistry (5) (5) CHEM 12A, B Organic Chemistry (5) (5) CHEM 30A Elementary Chemistry (4) CHEM 30B Elementary Organic Biochemistry (4) GEOG 1 Physical Geography (3) GEOL 1 Introduction to Geology (4) GEOL 13 Environmental Geology (3) PHYS 1 Introduction to Physics (4) PHYS 2A, B General Physics (4) (4) PHYS 4A Physics for Scientists & Engineer (4) (Mechanics / Fluids / Waves) PHYS 4B Physics for Scientists and Engineers (Electromagnetism) (4) PHYS 4C Physics for Scientists & Engineer (4) (Thermodynamic / Optics Moderns Physics) PSCI 1 Principles of Physical Science (3) PSCI 2 Introduction to Meteorology (3)		C - 1 Arts (Art, Dance Music, Theater) Minimum of 2 units from one of these courses.	
9 semester units or 12-15 quarter units						ENGL 4B	British Literature - 1798 to present (3)
C - 1 Arts (Art, Dance Music, Theater)						ENGL 5A	Survey of American Literature - 1620 - 1865 (3)
Minimum of 2 units from one of these courses.						ENGL 5B	Survey of American Literature - 1865 to present (3)
ART 1A, B Art History (3)						ENGL 9A	Introduction to Creative Writing (3)
ART 2A Two Dimensional Design (3)						ENGL 9B	Advanced Creative Writing (3)
ART 3A Drawing and Composition (3)		ENGL 9C	Poetry Writing (3)				
ENGL 4A British Literature - 449 through 1798 (3)		FRNH 1A, B	Elementary French (5) (5)				
ENGL 4B British Literature - 1798 to present (3)							
ENGL 5A Survey of American Literature - 1620 - 1865 (3)							
ENGL 5B Survey of American Literature - 1865 to present (3)							
ENGL 9A Introduction to Creative Writing (3)							
ENGL 9B Advanced Creative Writing (3)							
ENGL 9C Poetry Writing (3)							
FRNH 1A, B Elementary French (5) (5)							

C - 2 Humanities (continued)		
JPN	1A, B	Elementary Japanese ±± (1) (5)
SPAN	1A, B	Elementary Spanish (5) (5)
SPAN	2A, B	Intermediate Spanish (5) (5)
SPAN	9A	Spanish for Native Speakers (3)
SPAN	12A	Spanish for Spanish Speakers (5)
SPAN	12B	Spanish for Spanish Speakers (5)
		Intermediate/Advanced
HIST	1	U.S. Hist through Reconstruction (3)
HIST	2	United States History - (3)
		Reconstruction to the Present
HIST	3	History of California (3)
HIST	4A	History of World Societies (3)
		Before 1500
HIST	4B	History of World Societies (3)
		Before 1500
HIST	5	Women's Lives in Early U.S. (3)
		History
HIST	6	Women's Lives in Recent U.S. (3)
		History
HIST	7A, B	History of Western Civilization (3) (3)
HIST	10	African American History (3)
HIST	12	Cult Hist of the Mexican American (3)
HIST	14	U.S. in the 20th Century: (3)
		An Oral History Approach
HUM	3	Introduction to the Cinema (3)
HUM	4	Intro to the American Cinema (3)
HUM	5	Humanities Through the Arts (3)
HUM	10	Approaches to Contemporary Filr (3)
JOUR	10	Mass Media and Society (3)
SOC	10	Mass Media and Society (3)
PHIL	1	Introduction to Philosophy (3)
PHIL	3A	Ethics (3)
PHIL	3B	Contemporary Moral Issues (3)
PHIL	6	Comparative Religions (3)
PHIL	9	Philosophy of Religion (3)
PHIL	7A	Hist of Philosophy: Ancient to (3)
		Medieval

AREA D

SOCIAL SCIENCES

Two requirements: select one course from Requirement 1, and select 2 courses from Requirement 2.

9 semester units or 12-15 quarter units

Requirement 1:

HIST	1	U.S. Hist through Reconstruction (3)
HIST	2	U.S. Hist Reconstruction (3)
		to the Present
POLS	1	Intro to American Government (3)

NOTE: For the baccalaureate degree, one of the following combinations will satisfy the CSU graduation requirements in US History, Constitution and American Ideals:

HIST 1 & 2, POLS 1 with either HIST 1 or 2

Requirement 2:

D - 1 Anthropology and Archeology		
ANTH	2	Introduction to Archeology (3)
ANTH	3	Intro to Cultural Anthropology (3)
ANTH	5	Magic, Witchcraft and Religion (3)
ANTH	8	Intro to New World Archeology (3)
ANTH	10	Native American Culture (3)
D - 2 Economics		
ECON	1	Principles of Macroeconomics (3)
ECON	2	Principles of Microeconomics (3)
ECON	10	Fundamentals of Economics (3)
D - 3 Ethnic Studies		
CMUN	4	Intercultural Communication (3)
HIST	10	African American History (3)
HIST	12	Cultural History of the Mexican (3)
		American
SOC	3	Sociology of Race, Ethnicity, (3)
		and Cultural Identity
D - 4 Gender Studies		
HIST	5	Women's Lives in Early U.S. (3)
		History
HIST	6	Women's Lives in Recent U.S. (3)
		History
SOC	4	Sociology of Women and Men (3)
D - 5 Geography		
GEOG	2	Cultural Geography (3)
D - 6 History		
HIST	1	U.S. Hist through Reconstruction (3)
HIST	2	United States History - (3)
		Reconstruction to the Present
HIST	3	History of California (3)
HIST	4A	History of World Societies (3)
		Before 1500
HIST	4B	History of World Societies (3)
		Before 1500 to Present
HIST	5	Women's Lives in Early U.S. (3)
		History
HIST	6	Women's Lives in Recent U.S. (3)
		History
HIST	10	African American History (3)
HIST	12	Cultural History of the Mexican (3)
		American
HIST	14	U.S. in the 20th Century (3)
		An Oral History Approach
D - 7 Interdisciplinary Social & Behavioral Sci.		
ANTH	9	The Cultural Context of Child (3)
		and Family in a Diverse Society
CMUN	4	Intercultural Communication (3)
PSYC	6	Intro to Conflict Resolution (3)
AJ	6	Intro to Conflict Resolution (3)
POLS	6	Intro to Conflict Resolution (3)
PSYC	7	The Cultural Context of Child (3)
		and Family in a Diverse Society
CD	7	The Cultural Context of Child (3)
		and Family in a Diverse Society
SSCI	1	Introduction to Social Sciences (3)

D - 8 Political Science, Government and Legal Institutions

POLS	1	Intro to American Government (3)
POLS	3	Intro to Comparative Politics (3)
POLS	4	Intro to International Relations (3)
POLS	12	Introduction to Political Thought (3)
PHIL	12	Introduction to Political Thought (3)

D - 9 Psychology

PSYC	1A, B	Intro to Psychology (3) (3)
PSYC	2	Early Childhood Development (3)
PSYC	3	Child Growth and Development (3)
		During the School Years
CD	2	Early Childhood Development (3)
CD	3	Child Growth and Development (3)
		During the School Years

D - 0 Sociology and Criminology

SOC	1A	Introduction to Sociology (3)
SOC	1B	Introduction to Sociology: (3)
		Social Problems
SOC	3	Sociology of Race, Ethnicity, (3)
		and Cultural Identity
SOC	4	Sociology of Women and Men (3)
SOC	10	Mass Media and Society (3)
JOUR	10	Mass Media and Society (3)

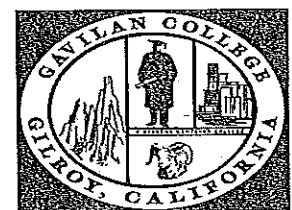
AREA E

LIFELONG LEARNING AND SELF-DEVELOPMENT

1. One unit of Physical Education activity course

2. Two units from:

AH	3	The Person in the Life Cycle (3)
AH	11	Nutrition (3)
BIO	11	Nutrition (3)
GUID	6	Life Skills for Higher Education (2)
HE	1	Health Education (3)
HE	2	Human Sexuality (3)
PSYC	5	Self-Assessment and Career (2)
		Development
GUID	1	Self-Assessment and Career (2)
		Development
»PSYC	2	Early Childhood Development (3)
»PSYC	3	Child Growth and Development (3)
		During the School Years
»CD	2	Early Childhood Development (3)
»CD	3	Child Growth and Development (3)
		During the School Years
PSYC	41	Psychology of Adjustment (2)
SOC	21	Marriage and the Family (3)



Courses listed under more than one discipline or area may be used only once to satisfy an area.

** Approved for: Fall 2008

± ± = Approved retroactively for Fall 2005

NOTE: "»" or "»" PSY 2 + 3 acceptable for AREA E only if taken as a combination.

NOTE: Transfer credit of certain courses (especially Science and Math) may be limited by UC or CSU or both. Consult with a Counselor.

Name: _____				GENERAL EDUCATION COURSES			Met	IP	Need
G00: _____ Tel #: _____				• Area A: English Language, Communication and Critical Thinking					
Catalog Year: _____ Cert/Degree: _____				A-1 Comm.					
Major: _____ Emphasis: _____				A-2 Engl					
Transcripts From: _____				A-3 Critical Think					
Transferring To: _____				• Area B: Scientific Inquiry & Quantitative Reasoning					
CORE/MAJOR COURSES				Met	IP	Need	B-1 Phys Sci		
							B-2 Life Sci		
							B-3 Sci Lab		
							B-4 Math		
							• Area C: Arts and Humanities		
							C-1		
							C-2		
							Engl 1B		
							• Area D: Social Sciences		
							D-1 (AI)		
							D-1 (AI)		
PREREQUISITES/ELECTIVES				Met	IP	Need	D-2a Soc Sci		
							D-2b Soc Sci		
							• Area E: Lifelong Learning & Self-Development		
							E-1 Phys Ed		
							E-2		

FA SP SU, 20____ units	FA SP SU, 20____ units	FA SP SU, 20____ units
_____	_____	_____
_____	_____	_____
_____	_____	_____
_____	_____	_____
_____	_____	_____
_____	_____	_____
_____	_____	_____
_____	_____	_____
_____	_____	_____
_____	_____	_____
_____	_____	_____

Counselor's Signature	Date	Student's Signature	Date
--------------------------	------	------------------------	------



2009-2010

General Education Pattern - Graduation Requirements

GAVILAN COLLEGE

Gavilan Joint Community College District



5055 Santa Teresa Blvd., Gilroy, CA 95020

www.gavilan.edu

(408) 848-4800

GRADUATION REQUIREMENTS

1. File a Petition to Graduate with the Admissions and Records Office by April 1 for Spring or Summer graduation, and by October 1 to graduate at the end of the Fall Semester. One petition must be filed for each Associate Degree, Certificate of Completion or Award of Achievement the student expects to receive.
2. Maintain a cumulative grade point average of 2.0 ("C") or higher for all work attempted and a grade of "C" or higher in each major or certificate courses.
3. Complete a minimum of 18 units of coursework in a major. Specific major course requirements are listed in the college catalog.
4. Complete a minimum of 60 semester units. Within the (60) unit requirement, the (9) units in Area A, and B-4 must be completed with a grade of "C" or better in each course. Complete the last 12 units, or a total of 48 units, at Gavilan College.

AREA A

ENGLISH LANGUAGE COMMUNICATION
AND CRITICAL THINKING

Select one course from each category. All courses must be completed with a grade of "C" or better.

6 - 9 Semester Units

A - 1 Oral Communications

- CMUN 1A Introduction to Public Speaking (3)
- CMUN 5 Fundamentals of Comm Studies (3)
- CMUN 8 Interpersonal Communication (3)
- CMUN 10 Small Group Communication (3)

A - 2 Written Communication

- ENGL 1A Composition (3)

NOTE: The ENGL 1A requirement became effective for students starting Fall 2009

A - 3 Reading

ENGL 260 or SSCI 270A or SSCI 270B with a grade of "C" or better, or demonstrate reading proficiency at the college level. (Competency may be verified by an approved test.)

AREA B

SCIENTIFIC INQUIRY AND QUANTITATIVE
REASONING

Select one course from each category. The Physical or Life Science course must include a laboratory (indicated in BOLD).

6 - 9 Semester Units

B - 1 Physical Science

- ASTR 1 Intro to General Astronomy (3)
- CHEM 1A, B General Chemistry (5 (5))
- CHEM 12A, B Organic Chemistry (5 (5))
- CHEM 30A Elementary Chemistry (4)
- CHEM 30B Elementary Organic Biochemistry (4)
- GEOG 1 Physical Geography (3)
- GEOL 1 Introduction to Geology (4)
- GEOL 13 Environmental Geology (3)
- PHYS 1 Introduction to Physics (4)
- PHYS 2A, B General Physics (4 (4))
- PHYS 4A Physics for Scientists & Engineer (4)
(Mechanics / Fluids / Waves)
- PHYS 4B Physics for Scientists and Engineers (Electromagnetism) (4)

- PHYS 4C Physics for Scientists & Engineers (4)
(Thermodynamic / Optics
Moderns Physics)
- PSCI 1 Principles of Physical Science (3)
- PSCI 2 Introduction to Meteorology (3)
- B - 2 Life Science**
- ANTH 1 Intro to Physical Anthropology (3)
- BIO 1 General Biology (4)
- BIO 4 General Zoology (4)
- BIO 5 General Botany (4)
- BIO 7 Human Anatomy (4)
- BIO 8 General Microbiology (5)
- BIO 9 Human Physiology (5)
- BIO 10 Principles of Biology (4)
- BIO 13 Marine Biology (4)
- BIO 15 Survey of Human Anatomy and Physiology (5)
- ECOL 1 Conservation of Natural Resources (4)

B - 3 Laboratory Activity

LAB courses are bold in Areas B-1 and B-2 above

B - 4 Mathematics

Minimum of Math 233 or equivalent. (Competency may be verified by an approved test.)

NOTE: The Math 233 requirement became effective for students starting Fall 2009

- ENGL 2A Introduction to Poetry (3)
- ENGL 2B Intro to Multi-Cultural Literature (3)
- ENGL 2C Intro to Film and Fiction (3)
- ENGL 2E Introduction to Women Writers (3)
- ENGL 2F Children's Literature* (3)
- ENGL 2H Mexican-American Literature (3)
- ENGL 2J Mythology (3)
- ENGL 4A British Literature - 449 through 1798 (3)
- ENGL 4B British Literature - 1798 to present (3)
- ENGL 5A Survey of American Literature - 1620 - 1865 (3)
- ENGL 5B Survey of American Literature - 1865 to present (3)
- ENGL 9A Introduction to Creative Writing (3)
- ENGL 9B Advanced Creative Writing (3)
- ENGL 9C Poetry Writing (3)
- HIST 1 U.S. Hist through Reconstruction (3)
- HIST 2 United States History - Reconstruction to the Present (3)
- HIST 3 History of California (3)
- HIST 4A History of World Societies Before 1500 (3)
- HIST 4B History of World Societies Before 1500 (3)
- HIST 5 Women's Lives in Early U.S. History (3)
- HIST 6 Women's Lives in Recent U.S. History (3)
- HIST 7A History of Western Civilization (3)
- HIST 7B History of Western Civilization (3)
- HIST 10 African American History (3)
- HIST 12 Cult Hist of the Mexican America (3)
- HIST 14 U.S. in the 20th Century: An Oral History Approach (3)
- HIST 21 Ancient Americas: A History Through Art (3)
- HUM 3 Introduction to the Cinema (3)
- HUM 4 Intro to the American Cinema (3)
- HUM 5 Humanities Through the Arts (3)
- HUM 10 Approaches to Contemporary Film (3)
- JOUR 10 Mass Media and Society (3)
- PHIL 1 Introduction to Philosophy (3)
- PHIL 2 Logic (3)
- PHIL 3A Ethics (3)
- PHIL 3B Contemporary Moral Issues (3)
- PHIL 4 Critical Thinking and Writing (3)

AREA C

ARTS AND HUMANITIES

Select one course from each category.

5 Semester Units

C - 1 Arts (Art, Dance Music, Theater)

CMUN 2; HUM 10 or Any Art, Journalism, Music or Theatre Course (other than area C-2)

C - 2 Humanities (Literature, Philosophy, Foreign Language)

- ART 11 Creativity, imagination, & Innovation (3)
- ART 21 Ancient Americas: A History Through Art (3)
- ENGL 1B Composition and Literature (3)
- ENGL 1C Critical Reasoning and Writing (3)

C - 2 Humanities (continued)			
PHIL	6	Comparative Religions	(3)
PHIL	6B	Philosophy of Religion	(3)
PHIL	7A	History of Philosophy: Ancient to Medieval	(3)
SOC	10	Mass Media and Society	(3)
Any Foreign Language Course			(3)

AREA D (continued)			
JOUR	10	Mass Media and Society	(3)
PHIL	12	Introduction to Political Thought	(3)
POLS	1	Intro to American Government	(3)
POLS	3	Intro to Comparative Politics	(3)
POLS	4	Intro to International Relations	(3)
POLS	6	Intro to Conflict Resolution	(3)
POLS	12	Introduction to Political Thought	(3)
PSYC	1A, B	Intro to Psychology	(3) (3)
PSYC	2	Early Childhood Development	(3)
PSYC	3	Child Growth and Development During the School Years	(3)
PSYC	6	Conflict Resolution	(3)
PSYC	7	The Cultural Context of Child and Family in a Diverse Society	(3)
SOC	1A	Introduction to Sociology	(3)
SOC	1B	Introduction to Sociology: Social Problems	(3)
SOC	3	Sociology of Race, Ethnicity, and Cultural Identity	(3)
SOC	4	Sociology of Women and Men	(3)
SOC	10	Mass Media and Society	(3)
SSCI	1	Introduction to Social Sciences	(3)

AREA E (continued)			
PSYC	27	Contemporary Leadership	(3)
PSYC	41	Psychology of Adjustment	(2)
SOC	21	Marriage and the Family	(3)

AREA D

SOCIAL SCIENCES

Two requirements: select one course from D-1, and select 2 courses from D-2

9 Semester Units

D - 1			
HIST	1	U.S. Hist through Reconstruction	(3)
HIST	2	U.S. Hist Reconstruction to the Present	(3)
HIST	5	Womens Lives in Early U.S.	(3)
POLS	1	Intro to American Government	(3)
D - 2			
AJ	6	Intro to Conflict Resolution	(3)
AJ	10	Intro to Administration of Justice	(3)
ANTH	2	Introduction to Archeology	(3)
ANTH	3	Intro to Cultural Anthropology	(3)
ANTH	5	Magic, Witchcraft and Religion	(3)
ANTH	8	Intro to New World Archeology	(3)
ANTH	9	The Cultural Context of Child and Family in a Diverse Society	(3)
ANTH	10	Native American Culture	(3)
BUS	1	Fundamentals of Business	(3)
CD	2	Early Childhood Development	(3)
CD	3	Child Growth and Development During the School Years	(3)
CD	7	The Cultural Context of Child and Family in a Diverse Society	(3)
CMUN	4	Intercultural Communication	(3)
ECON	1	Principles of Macroeconomics	(3)
ECON	2	Principles of Microeconomics	(3)
ECON	10	Fundamentals of Economics	(3)
GEOG	2	Cultural Geography	(3)
HIST	1	U.S. Hist through Reconstruction	(3)
HIST	2	United States History - Reconstruction to the Present	(3)
HIST	3	History of California	(3)
HIST	4A	History of World Societies Before 1500	(3)
HIST	4B	History of World Societies 1500 to Present	(3)
HIST	5	Women's Lives in Early U.S. History	(3)
HIST	6	Women's Lives in Recent U.S. History	(3)
HIST	10	African American History	(3)
HIST	12	Cultural History of the Mexican American	(3)
HIST	14	U.S. in the 20th Century An Oral History Approach	(3)

AREA F

CULTURAL DIVERSITY

6 Semester Units

2 courses from the following list; courses listed under more than one area may be used, double counted, to satisfy other general education requirements.

AH	3	The Person in the Life Cycle	(3)
AH	11	Nutrition	(3)
ANTH	3	Intro to Cultural Anthropology	(3)
ANTH	5	Magic, Witchcraft and Religion	(3)
ANTH	9	The Cultural Context of Child and Family in a Diverse Society	(3)
ANTH	10	Native American Culture	(3)
ART	10A	Cultural History of Ceramics	(3)
ART	11	Creativity, Imagination, & Innovation	(3)
ART	20	Art of Asia	(3)
ART	21	Ancient Americas: A History Through Art	(3)
BIO	11	Nutrition	(3)
CD	7	The Cultural Context of Child and Family in a Diverse Society	(3)
CMUN	4	Intercultural Communication	(3)
ENGL	2B	Intro to Multi-Cultural Literature	(3)
ENGL	2E	Introduction to Women Writers	(3)
ENGL	2H	Mexican-American Literature	(3)
GEOG	2	Cultural Geography	(3)
HE	2	Human Sexuality	(3)
HIST	3	History of California	(3)
HIST	5	Women's Lives in Early U.S. History	(3)
HIST	6	Women's Lives in Recent U.S. History	(3)
HIST	10	African American History	(3)
HIST	12	Cultural History of the Mexican American	(3)
HIST	21	Ancient Americas: A History Through Art	(3)
PHIL	6	Comparative Religions	(3)
POLS	3	Intro to Comparative Politics	(3)
POLS	4	Intro to International Relations	(3)
PSYC	7	The Cultural Context of Child and Family in a Diverse Society	(3)
SOC	3	Sociology of Race, Ethnicity, and Cultural Identity	(3)
SPAN	9A	Spanish for Spanish Speakers	(3)
SPAN	12A	Spanish for Spanish Speakers	(5)
SPAN	12B	Spanish for Spanish Speakers - Intermediate / Advanced	(5)
THEA	1	Theater History	(3)

AREA E

LIFELONG LEARNING AND SELF-DEVELOPMENT

3 Semester Units

1. Select one unit of Physical Education activity class or intercollegiate sport.

2. Select Two units from:

AH	3	The Person in the Life Cycle	(3)
AH	11	Nutrition	(3)
AH	30	Standard First Aid and Cardiopulmonary Resuscitation	(3)
BIO	11	Nutrition	(3)
CD	2	Early Childhood Development	(3)
CD	3	Child Growth and Development During the School Years	(3)
CSIS	1	Computer Literacy - MS Office	(2)
CSIS	2	Computers in Bus - MS Office	(4)
CSIS	6	Web Page Authoring I	(2)
CSIS	8	Introduction to the Internet	(1)
CSIS	45	C++ Programming I	(4)
CSIS	51	Visual Basic Net Programming	(2)
GUID	1	Self-Assessment and Career Development	(2)
GUID	6	Life Skills for Higher Education	(2)
GUID	200	Planning College Success	(2)
HE	1	Health Education	(3)
HE	2	Human Sexuality	(3)
PHIL	3B	Contemporary Moral Issues	(3)
PHIL	9	Philosophy of Religions	(3)
POLS	27	Contemporary Leadership	(3)
PSYC	2	Early Childhood Development	(3)
PSYC	3	Child Growth and Development During the School Years	(3)
PSYC	5	Self-Assessment and Career Development	(2)



Name: _____				GENERAL EDUCATION COURSES			Met	IP	Need
G00: _____ Tel #: _____				• Area A: English Language, Communication and Critical Thinking					
Catalog Year: _____ Cert/Degree: _____				A-1 Comm.					
Major: _____ Emphasis: _____				A-2 Engl					
Transcripts From: _____				A-3 Reading					
Transferring To: _____				• Area B: Scientific Inquiry & Quantitative Reasoning					
CORE/MAJOR COURSES			Met	IP	Need	B-1 Phys Sci			
						B-2 Life Sci			
						B-3 Sci Lab			
						B-4 Math			
						• Area C: Arts and Humanities			
						C-1			
						C-2			
						• Area D: Social Sciences			
						D-1 (AI)			
						D-2a Soc Sci			
						D-2b Soc Sci			
PREREQUISITES/ELECTIVES			Met	IP	Need	• Area E: Lifelong Learning & Self-Development			
						E-1 Phys Ed			
						E-2			
						• Area F: Cultural Diversity (Gav Only)			
						F-1			
						F-2			

FA SP SU, 20_____ units _____ _____ _____ _____	FA SP SU, 20_____ units _____ _____ _____ _____	FA SP SU, 20_____ units _____ _____ _____ _____
FA SP SU, 20_____ units _____ _____ _____ _____	FA SP SU, 20_____ units _____ _____ _____ _____	FA SP SU, 20_____ units _____ _____ _____ _____

Counselor's Signature _____
Date _____
Student's Signature _____
Date _____

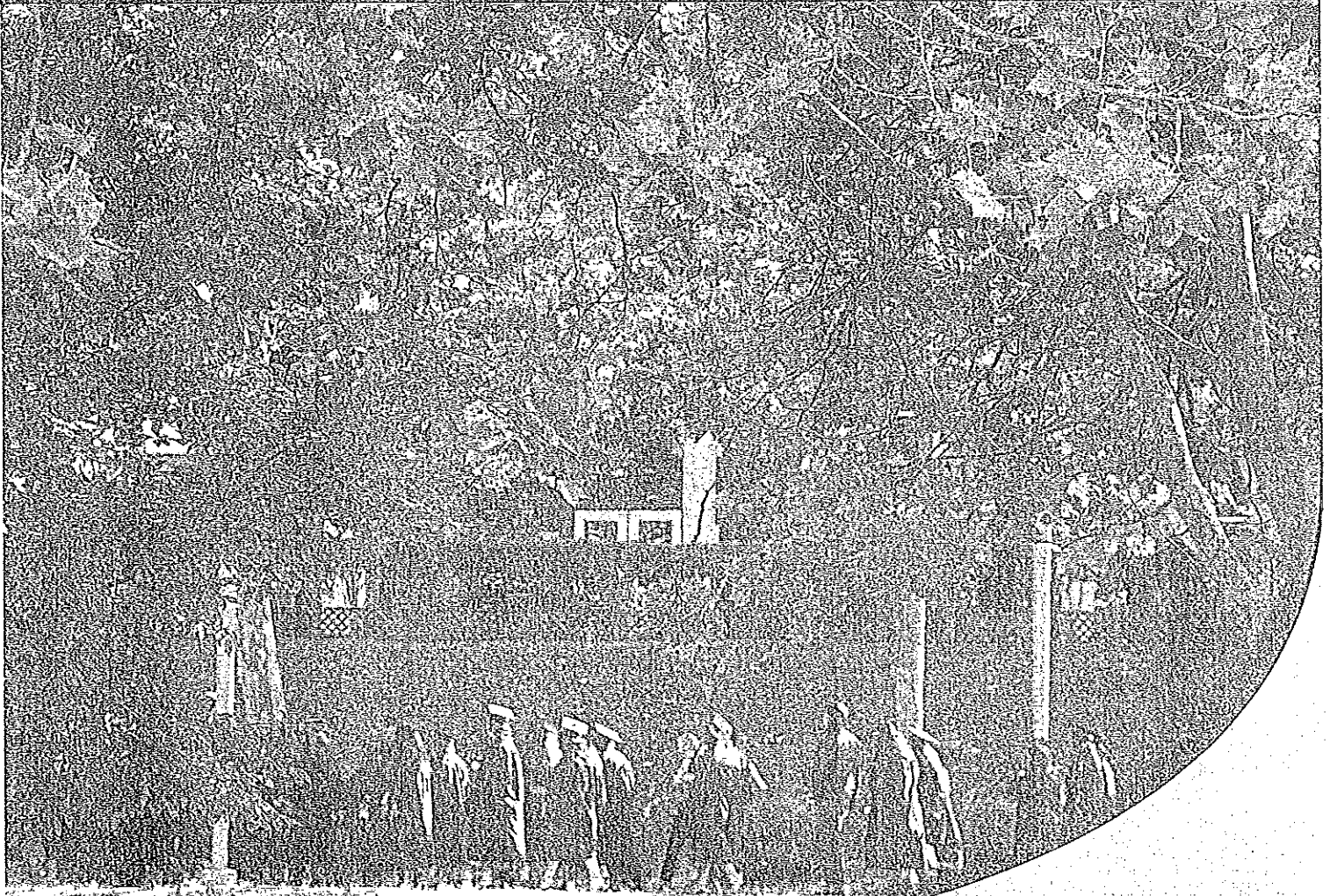


2009-2010

IGETC Transfer Pattern

GAVILAN COLLEGE

Gavilan Joint Community College District



5055 Santa Teresa Blvd. Gilroy, CA 95020

www.gavilan.edu

(408) 848-4800

Completion of all the requirements in the IGETC will permit a student to transfer from a community college to the California State University or the University of California without the need, after transfer, to take additional lower-division general education courses to satisfy campus general education requirements. All areas must be satisfied, and all courses must be completed with a grade of "C" or better before the IGETC can be certified. See requirements for partial IGETC certification in catalog. A student is strongly advised to complete a total of 60 transferable units before transferring. These will include the IGETC requirements, "major" prerequisites, and elective elective courses if needed.

(Students should request an IGETC certification from the Office of Admissions and Records before transferring.)

AREA 1		AREA 3		AREA 4	
<p>ENGLISH COMMUNICATION</p> <p>CSU - 3 courses required, one each from Group 1-A, 1-B, and 1-C</p> <p>UC - 2 courses required, one each from Group 1-A and 1-B</p> <p>1-A English Composition</p> <p>ENGL 1A Composition (3)</p> <p>1-B Critical Thinking / English Composition</p> <p>ENGL 1C Critical Reasoning and Writing (3)</p> <p>PHIL 4 Critical Thinking and Writing (3)</p> <p>1-C Oral Communication (CSU requirement only)</p> <p>CMUN 1A Introduction to Public Speaking (3)</p> <p>CMUN 5 Fund of Com Studies (3)</p> <p>CMUN 8 Interpersonal Communication (3)</p> <p>CMUN 10 Small Group Communication (3)</p>		<p>ARTS AND HUMANITIES</p> <p>At least 3 courses, with at least one course from the Arts and one course from the Humanities.</p> <p>9 semester, 12-15 quarter units.</p> <p>3-A Arts</p> <p>ART 1A,B Art History (3) (3)</p> <p>ART 6 Art Appreciation (3)</p> <p>ART 21 Ancient Americas: A History Through Art (3)</p> <p>HIST 21 Ancient Americas: A History Through Art (3)</p> <p>HUM 6 Foreign Cinema (3)</p> <p>MUS 1A,B Music History and Literature (3) (3)</p> <p>MUS 6 Introduction to World Music ** (3)</p> <p>THEA 1 Theater History (3)</p> <p>THEA 3 El Teatro Campesino (3)</p> <p>THEA 7 Theater Appreciation (3)</p> <p>3-B Humanities</p> <p>ENGL 1B Composition and Literature (3)</p> <p>ENGL 2A Introduction to Poetry (3)</p> <p>ENGL 2B Intro to Multi-Cultural Literature (3)</p> <p>ENGL 2C Introduction to Film and Fiction (3)</p> <p>ENGL 2E Introduction to Women Writers (3)</p> <p>ENGL 2F Childrens's Literature (3)</p> <p>ENGL 2H Mexican-American Literature (3)</p> <p>ENGL 2J Mythology (3)</p> <p>ENGL 4A British Literature - 449 through 1798 (3)</p> <p>ENGL 4B British Literature - 1798 to present (3)</p> <p>ENGL 5A Survey of American Literature - 1620 - 1865 (3)</p> <p>ENGL 5B Survey of American Literature - 1865 to present (3)</p> <p>*HIST 1 U.S. Hist through Reconstruction (3)</p> <p>*HIST 2 U.S. Hist Reconstruction to Present (3)</p> <p>*HIST 3 History of California (3)</p> <p>*HIST 4A Hist of World Societies Before 1500 (3)</p> <p>*HIST 4B History of World Societies - 1500 to Present (3)</p> <p>*HIST 5 Women's Lives in Early U.S. Hist (3)</p> <p>*HIST 6 Women's Lives in Recent U.S. Hist (3)</p> <p>HIST 7A History of Western Civilization (3)</p> <p>HIST 7B History of Western Civilization (3)</p> <p>*HIST 10 African American History (3)</p> <p>*HIST 12 Cultural History of the Mexican American (3)</p>		<p>*HIST 14 U.S. in the 20th Century: An Oral History Approach (3)</p> <p>HUM 3 Introduction to the Cinema (3)</p> <p>HUM 4 Intro to the American Cinema (3)</p> <p>HUM 5 Humanities Through the Arts (3)</p> <p>HUM 10 Approaches to Contemporary Film (3)</p> <p>PHIL 1 Introduction to Philosophy (3)</p> <p>PHIL 3A Ethics (3)</p> <p>PHIL 3B Contemporary Moral Issues (3)</p> <p>PHIL 6 Comparative Religions (3)</p> <p>PHIL 9 Philosophy of Religion (3)</p> <p>PHIL 7A History of Philosophy: Ancient to Medieval (3)</p> <p>*SPAN 2A,B Intermediate Spanish (5) (5)</p> <p>SPAN 9A Spanish for Native Speakers (3)</p>	
<p>MATHEMATICAL CONCEPTS AND QUANTITATIVE REASONING</p> <p>1 course, 3 semester, 4-5 quarter units</p> <p>2-A Math</p> <p>CSIS 26 Discrete Mathematics (4)</p> <p>+ECON 11 Statistics for Business and Economics (4)</p> <p>+GBUS 11 Statistics for Business and Economics (4)</p> <p>+MATH 1A Single Variable Calculus and Analytic Geometry (4)</p> <p>MATH 1B Single Variable Calculus and Analytic Geometry (4)</p> <p>MATH 1C Multivariable Calculus (4)</p> <p>MATH 2 Linear Algebra (3)</p> <p>MATH 2C Differential Equations (3)</p> <p>MATH 5 Introductions to Statistics (3)</p> <p>+MATH 6 Calc for Bus / Social Sci (3)</p> <p>MATH 7 Finite Mathematics (3)</p> <p>+MATH 8 Precalculus (5)</p> <p>+MATH 8A First Half of Precalculus (4)</p> <p>+MATH 8B Second Half of Precalculus (4)</p> <p>MATH 14 Math for the Liberal Arts (3)</p>		<p>SOCIAL AND BEHAVIORAL SCIENCES</p> <p>Three courses from at least two disciplines or an interdisciplinary sequence.</p> <p>9 semester, 12-15 quarter units.</p> <p>4-A Anthropology and Archeology</p> <p>ANTH 2 Introduction to Archeology (3)</p> <p>ANTH 3 Intro to Cultural Anthropology (3)</p> <p>ANTH 5 Magic, Witchcraft and Religion (3)</p> <p>ANTH 8 Intro to New World Archeology ** (3)</p> <p>ANTH 10 Native American Culture (3)</p> <p>4-B Economics</p> <p>+ECON 1 Principles of Macroeconomics (3)</p> <p>+ECON 2 Principles of Macroeconomics (3)</p> <p>+ECON 10 Fundamentals of Economics (3)</p> <p>4-E Geography</p> <p>GEOG 2 Cultural Geography (3)</p> <p>4-F History</p> <p>*HIST 1 U.S.Hist through Reconstruction (3)</p> <p>*HIST 2 United States History Reconstruction to the Present (3)</p> <p>*HIST 3 History of California (3)</p> <p>*HIST 4A History of World Societies Before 1500 (3)</p>			

4-F History - Cont.

*HIST 4B	History of World Societies 1500 to Present	(3)
*HIST 5	Women's Lives in Early U.S. Hist	(3)
*HIST 6	Women's Lives in Recent U.S. History	(3)
*HIST 10	African American History	(3)
*HIST 12	Cultural Hist of the Mexican American	(3)
*HIST 14	U.S. in the 20th Century: An Oral History Approach	(3)

4-G Interdisciplinary, Social & Behavioral Science

CMUN 4	Intercultural Communication	(3)
SSCI 1	Introduction to Social Sciences	(3)

4-H Political Science, Government & Legal Institutions

PHIL 12	Intro to Political Thought	(3)
POLS 1	Intro to American Government	(3)
POLS 3	Intro to Comparative Politics	(3)
POLS 4	Intro to International Relations	(3)
POLS 12	Introduction to Political Thought	(3)

4-I Psychology

CD 2	Early Childhood Development	(3)
CD 3	Child Growth and Development During the School Years	(3)
PSYC 1A,B	Introduction to Psychology	(3)(3)
PSYC 2	Early Childhood Development	(3)
PSYC 3	Child Growth and Development During the School Years	(3)

4-J Sociology & Criminology

JOUR 10	Mass Media and Society	(3)
SOC 1A	Introduction to Sociology	(3)
SOC 1B	Intro to Sociology: Social Problem	(3)
SOC 3	Sociology of Race, Ethnicity and Cultural Identity	(3)
SOC 4	Sociology of Women and Men	(3)
SOC 10	Mass Media and Society	(3)

+CHEM 30A	Elementary Chemistry	(4)
CHEM 30B	Elementary Organic Biochemistry	(4)
GEOG 1	Physical Geography	(3)
GEOL 1	Introduction to Geology	(4)
GEOL 13	Environmental Geology	(3)
+PHYS 1	Introduction to Physics	(4)
+PHYS 2A	General Physics	(4)
+PHYS 2B	General Physics	(4)
+PHYS 4A	Physics for Scientists and Engineers (Mechanics / Fluids / Waves)	(4)
+PHYS 4B	Physics for Scientists and Engineers (Electromagnetism)	(4)
+PHYS 4C	Physics for Scientists and Engineers (Thermodynamic / Optics / Moderns Physics)	(4)
+PSCI 1	Principles of Physical Science	(3)
PSCI 2	Introduction to Meteorology	(3)

5-B Biological Science

AH 8	General Microbiology	(5)
+AH 9	Human Physiology	(5)
+AH 15	Survey of Human Anatomy and Physiology	(5)
ANTH 1	Intro to Physical Anthropology	(3)
BIO 1	General Biology	(4)
BIO 4	General Zoology	(4)
BIO 5	General Botany	(4)
+BIO 7	Human Anatomy	(4)
BIO 8	General Microbiology	(5)
+BIO 9	Human Physiology	(5)
+BIO 10	Principles of Biology	(4)
BIO 13	Marine Biology	(4)
+BIO 15	Survey of Human Anatomy and Physiology	(5)
ECOL 1	Conservation of Natural Resources	(4)

+ Transfer credit may be limited by either UC or CSU or both. Please consult with a counselor.

CSU Graduation Requirement in U.S. History, Constitution and American Ideals.

Not Part of IGETC. (May be completed prior to transfer.) For the baccalaureate degree, CSU requires one of the following combinations: HIST 1 & 2, or POLS 1 with either HIST 1 or 2.

CSU campuses have the discretion whether to allow courses used to satisfy the CSU US History, constitution and American ideals (AI) graduation requirement to count in both areas 3B or 4B and to meet the graduation requirement.

SUPPLEMENTARY NOTES

1. A single course, even though listed in more than one place, can only be used to satisfy one subject area of the IGETC.
2. IGETC is not advisable for high-unit majors, e.g. sciences, engineering.
3. Eleanor Roosevelt and Revelle Colleges at UC San Diego do not accept the IGETC.
4. IGETC may not be appropriate for students who have completed courses at a CSU or UC campus.
5. "Double counting" of courses toward the major is not limited by the IGETC, but may be limited by other directives. The UC will also allow IGETC courses to count toward major requirements. CSU campus limitations on double-counting of general education courses toward major preparation are not changed by the IGETC.

AREA 5

PHYSICAL AND BIOLOGICAL SCIENCES

At least 2 courses, one Physical Science course and one Biological Science course; At least one must include a laboratory. Courses in **BOLD** include a laboratory component.

7-9 semester, 9-12 quarter units

5-A Physical Science

ASTR 1	Intro to General Astronomy	(3)
CHEM 1A	General Chemistry	(5)
CHEM 1B	General Chemistry	(5)
CHEM 12A	Organic Chemistry	(5)
CHEM 12B	Organic Chemistry	(5)

AREA 6

LANGUAGE OTHER THAN ENGLISH (UC REQUIREMENT ONLY)

Proficiency equivalent to two years of high school study in the same language.

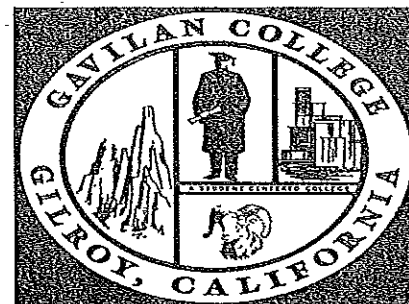
6-A Language Other Than English

FRNH 1B	Elementary French	(5)
JPN 1B	Elementary Japanese	(5)
SPAN 1B	Elementary Spanish	(5)
*SPAN 2A,B	Intermediate Spanish	(5)(5)
SPAN 12A	Spanish for Spanish Speakers	(5)
SPAN 12B	Spanish for Spanish Speakers - Intermediate / Advanced	(5)

* Courses listed in multiple areas shall not be certified in more than one area except for courses in Languages Other Than English, which can be certified in both areas 3B and 6A.

+ Transfer credit may be limited by either UC or CSU or both. Please consult with a counselor.

** Approved for Fall 2008



Name: _____				GENERAL EDUCATION COURSES			Met	IP	Need
G00: _____ Tel #: _____				• Area 1: English and Communication					
Catalog Year: _____ Cert/Degree: _____				1-A English Composition					
Major: _____ Emphasis: _____				1-B Critical Thinking					
Transcripts From: _____				1-C Oral Communication					
Transferring To: _____				• Area 2: Mathematical Concepts and Quantitative Reasoning					
CORE/MAJOR COURSES			Met	IP	Need	2-A Math			
						• Area 3: Arts and Humanities			
						3-A Arts			
						3-B Humanities			
						3-A (or) B			
						• Area 4: Social and Behavioral Sciences			
						4 A-F			
						4 A-F			
						4 A-F			
PREREQUISITES/ELECTIVES			Met	IP	Need	• Area 5: Physical and Biological Sciences			
						5-A Physical Science			
						5-B Biological Science			

FA SP SU, 20____ units	FA SP SU, 20____ units	FA SP SU, 20____ units
_____	_____	_____
_____	_____	_____
_____	_____	_____
_____	_____	_____
_____	_____	_____
_____	_____	_____
_____	_____	_____
_____	_____	_____
_____	_____	_____
_____	_____	_____
_____	_____	_____

Counselor's Signature	Date	Student's Signature	Date
-----------------------	------	---------------------	------