



Student Profile of Opening Enrollment

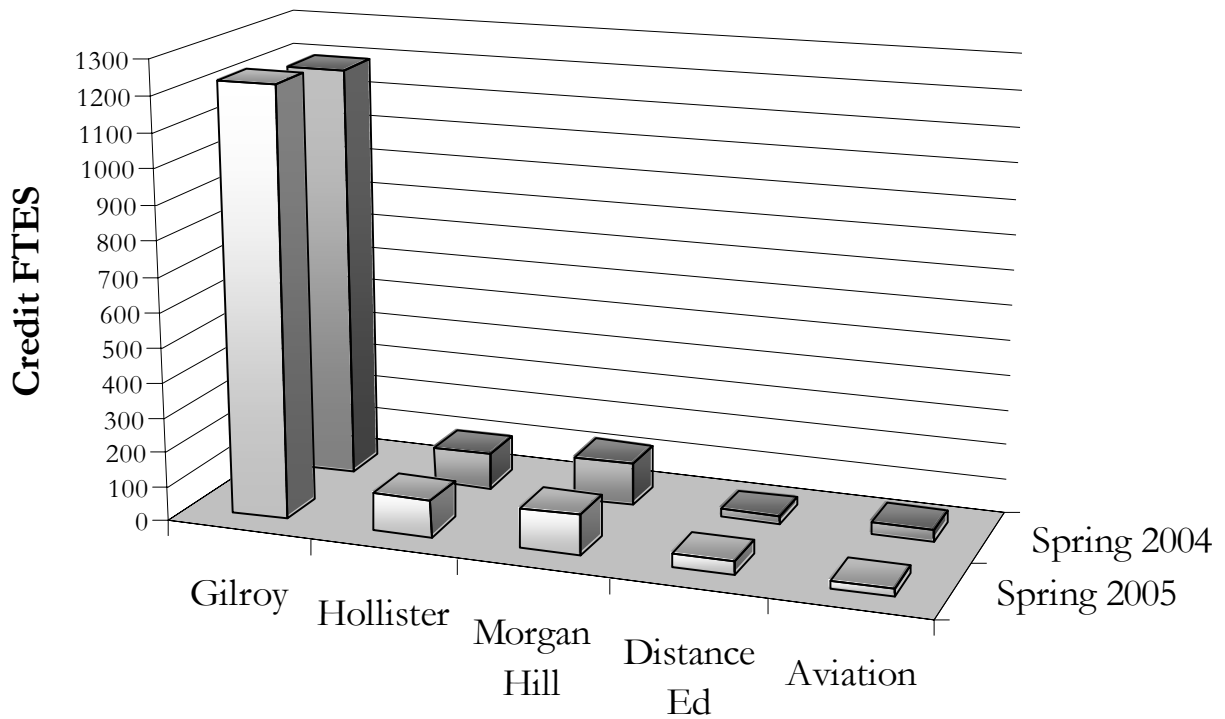
Fall 2001 – Spring 2005

Highlights

- Spring 2005 FTES is 2.7% above Spring 2004 FTES with Distance Education classes more than doubling their FTES.
- About two-thirds of current students are continuing from Fall.
- The median age of Gavilan students has remained at about 24 to 25 years old.
- Gender proportions have remained fairly constant with about 3 females for every 2 males.
- The proportion of Latino and Asian/Pacific Islander students appears to continue a slow increase.

This report is available at www.gavilan.edu/research.

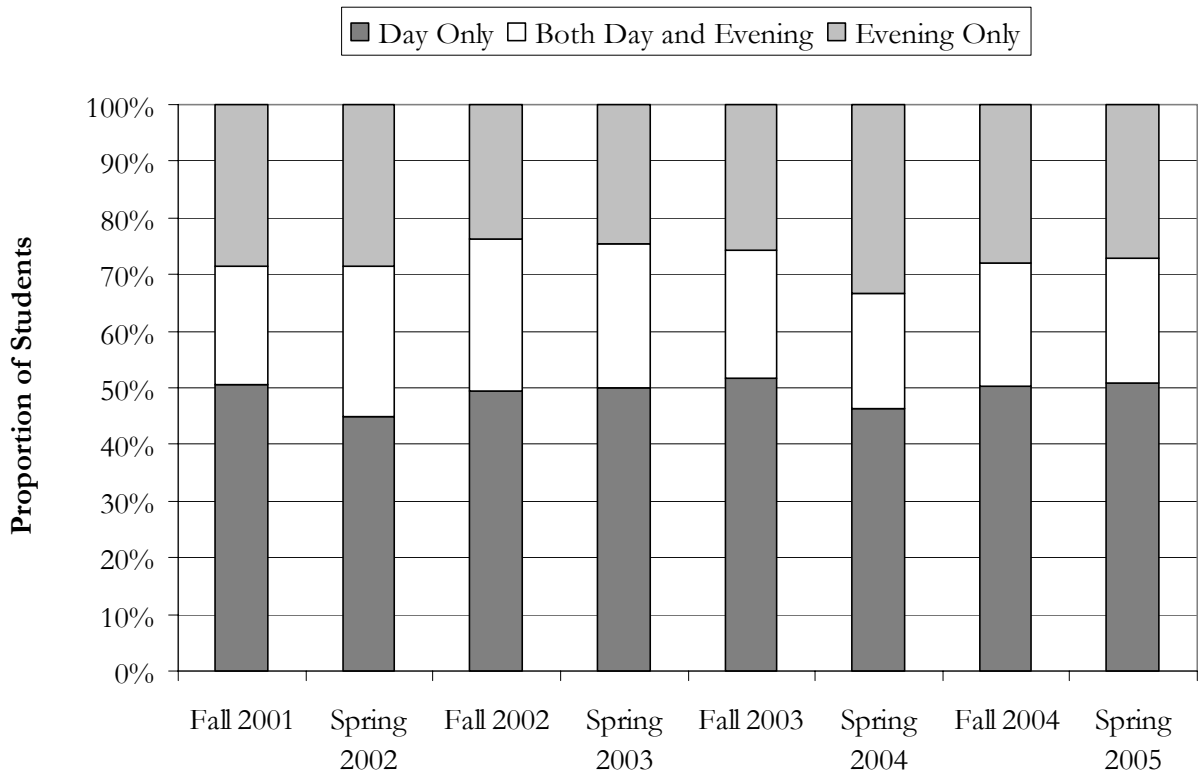
Prepared by
Terrence Willett, Director of Research
Joy Parker, Director of Admissions and Records
February 2005



Credit FTES by location on 5th day of classes

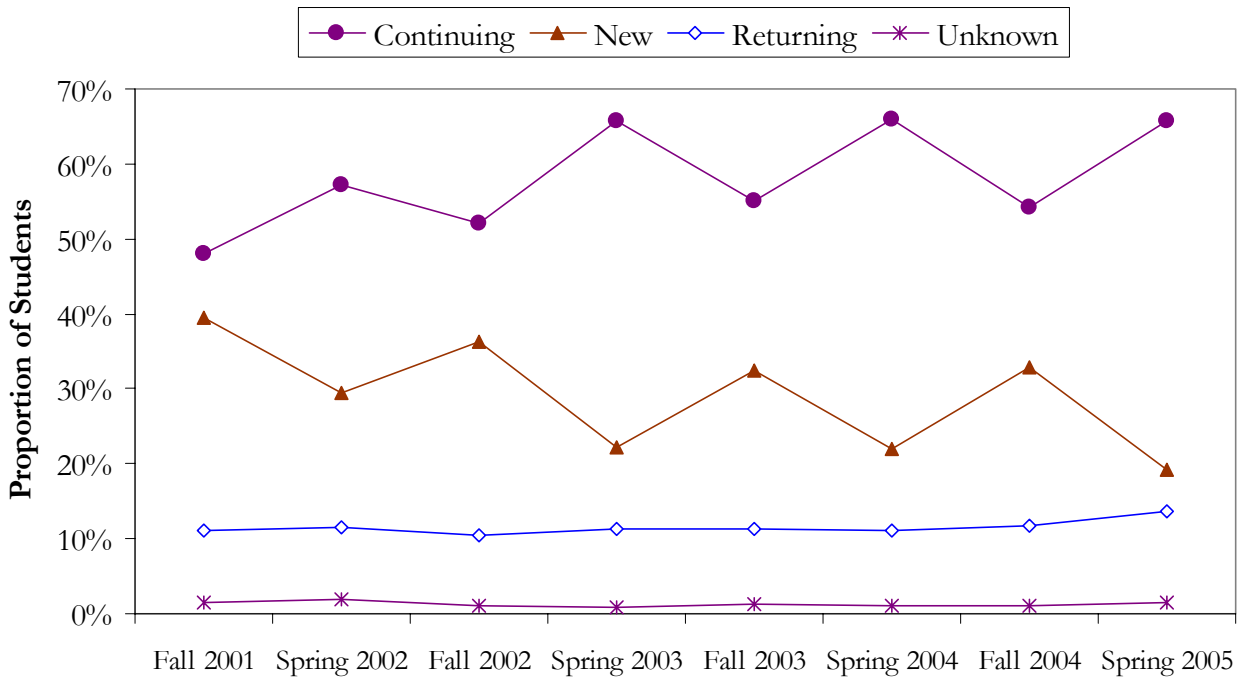
Credit FTES	Gilroy	Hollister	Morgan Hill	Distance Ed	Aviation
Spring 2004	1192	103	125	20	34
Spring 2005	1227	106	116	42	22
Absolute Change	35	3	-9	22	-12
Relative Change	3%	3%	-7%	110%	-35%

Data does not include Police and Fire Academies or other off campus non-distance education classes. Please note this data is preliminary. End of semester FTES will differ.



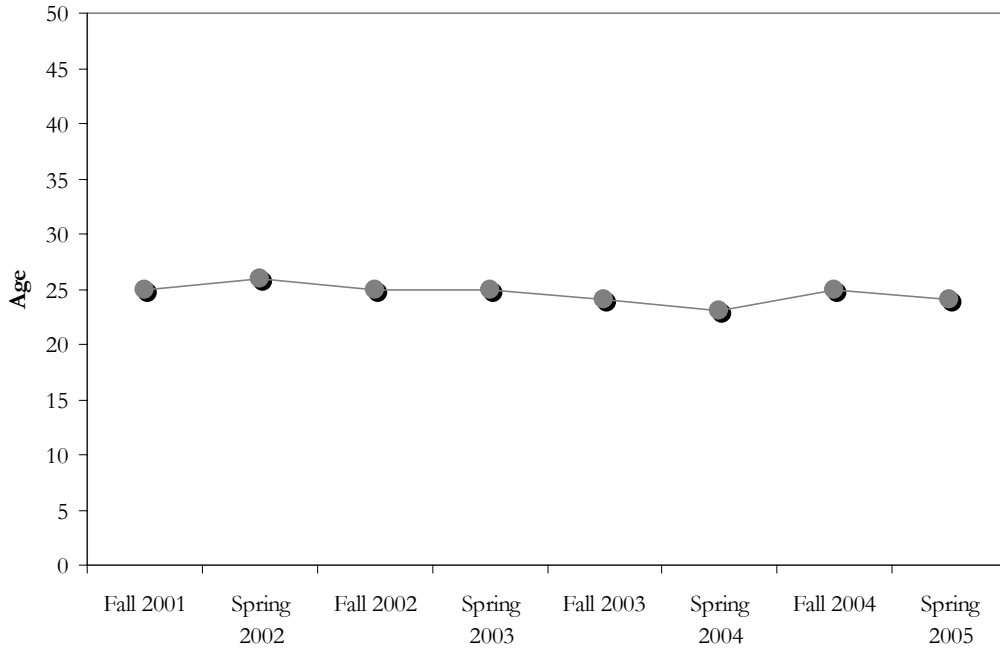
Time of Enrollment	Fall 2001	Spring 2002	Fall 2002	Spring 2003	Fall 2003	Spring 2004	Fall 2004	Spring 2005
Day Only	51%	45%	50%	50%	52%	46%	50%	51%
Both Day and Evening	21%	26%	27%	25%	22%	20%	22%	22%
Evening Only	28%	29%	24%	25%	26%	33%	28%	27%

Enrollment Status of Gavilan College Students



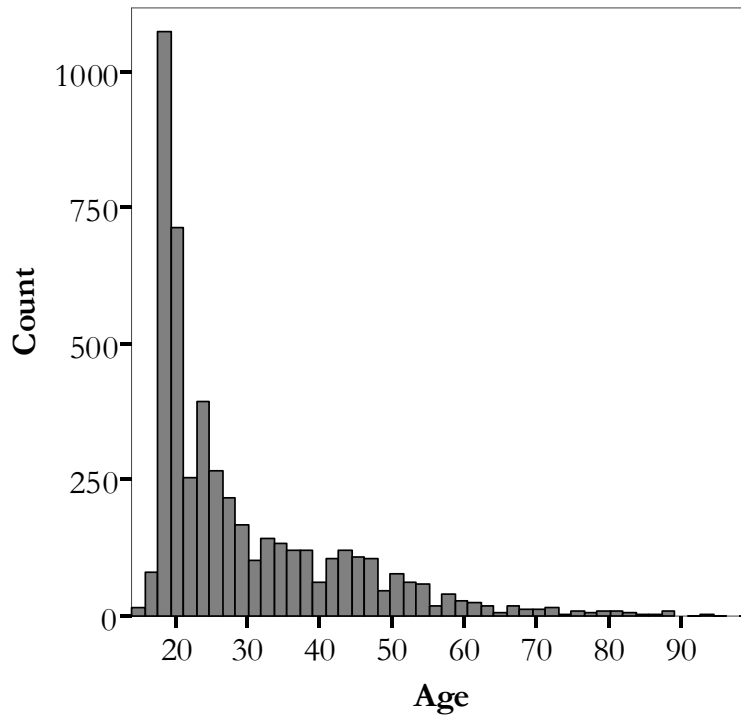
Enrollment Status	Fall 2001	Spring 2002	Fall 2002	Spring 2003	Fall 2003	Spring 2004	Fall 2004	Spring 2005
Continuing	48%	57%	52%	66%	55%	66%	54%	66%
New	39%	29%	36%	22%	32%	22%	33%	19%
Returning	11%	11%	10%	11%	11%	11%	12%	14%
Unknown	1%	2%	1%	1%	1%	1%	1%	1%

Median Age of Gavilan College Students

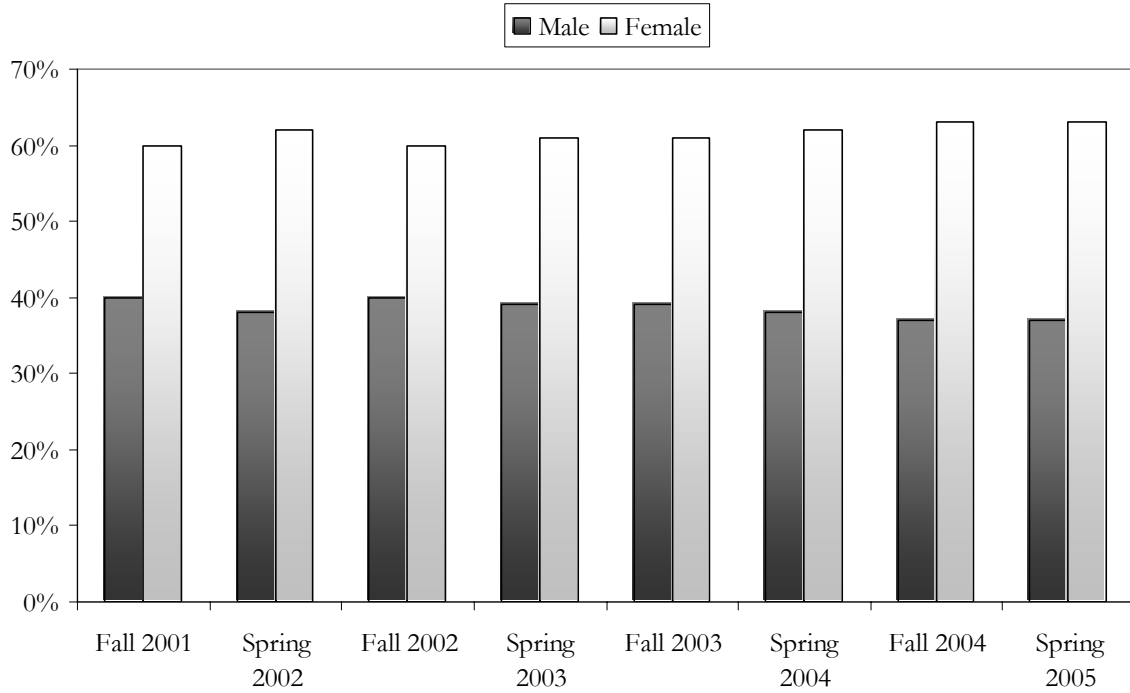


	Fall 2001	Spring 2002	Fall 2002	Spring 2003	Fall 2003	Spring 2004	Fall 2004	Spring 2005
Median Age	25	26	25	25	24	23	25	24

Age Distribution of Gavilan College Students Spring 2005

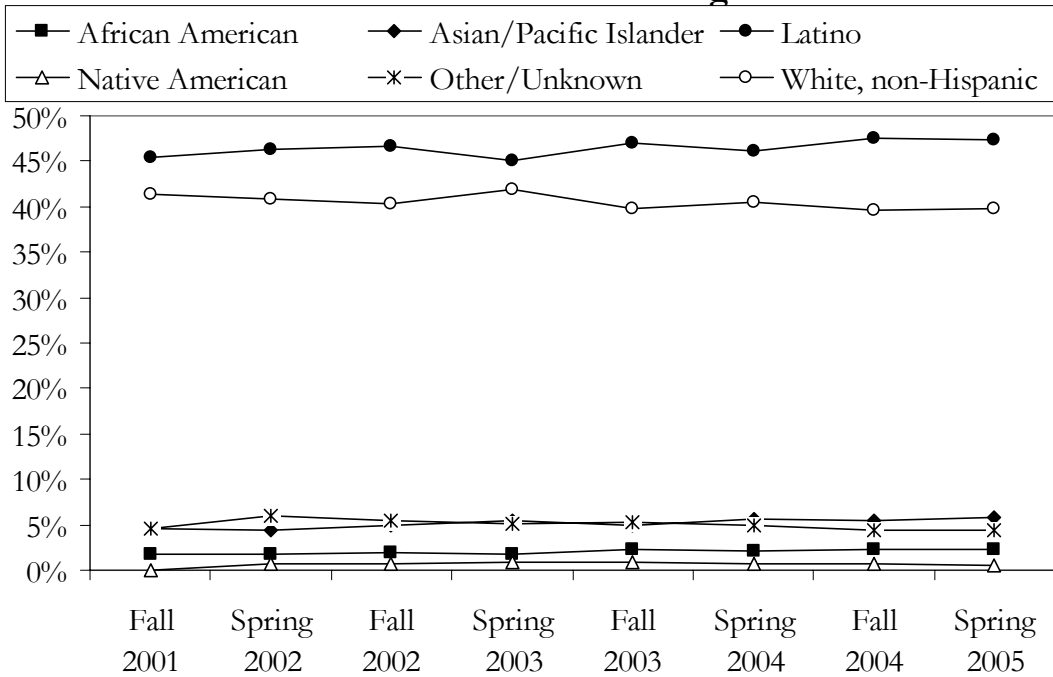


Gender of Gavilan College Students



Gender	Fall 2001	Spring 2002	Fall 2002	Spring 2003	Fall 2003	Spring 2004	Fall 2004	Spring 2005
Male	40%	38%	40%	39%	39%	38%	37%	37%
Female	60%	62%	60%	61%	61%	62%	63%	63%

Ethnicities of Gavilan College Students



	Fall 2001	Spring 2002	Fall 2002	Spring 2003	Fall 2003	Spring 2004	Fall 2004	Spring 2005
African American	1.7%	1.8%	1.9%	1.7%	2.2%	2.1%	2.3%	2.2%
Asian/Pacific Islander	4.5%	4.4%	4.9%	5.5%	5.0%	5.6%	5.5%	5.8%
Latino	45.4%	46.4%	46.7%	45.0%	47.0%	46.1%	47.5%	47.4%
Native American	0.0%	0.7%	0.7%	0.9%	0.8%	0.7%	0.8%	0.5%
Other/Unknown	4.6%	5.9%	5.5%	5.1%	5.2%	5.0%	4.4%	4.4%
White, non-Hispanic	41.4%	40.8%	40.3%	41.9%	39.7%	40.5%	39.5%	39.7%