



Student Profile of Opening Enrollment

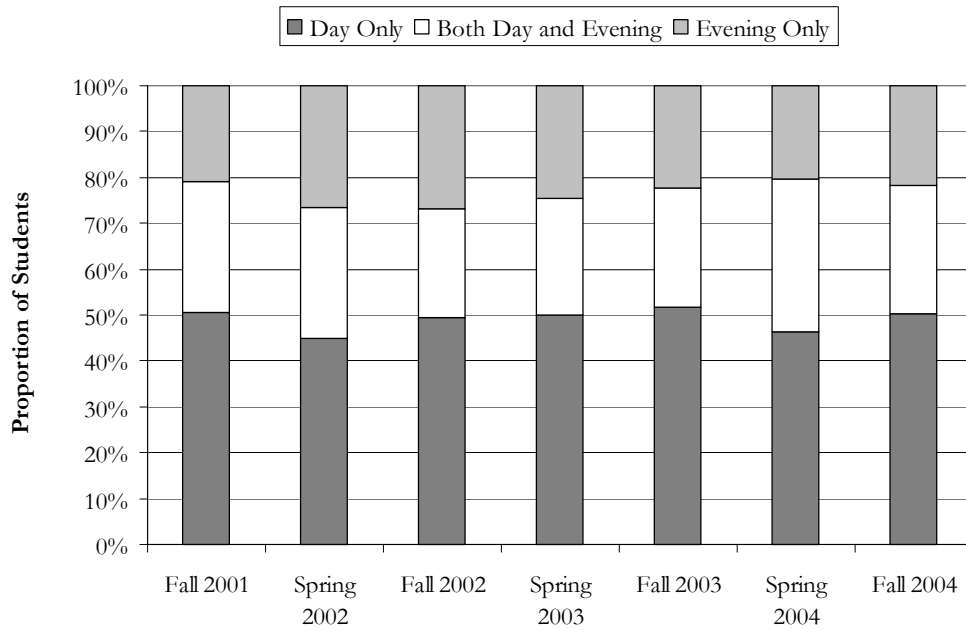
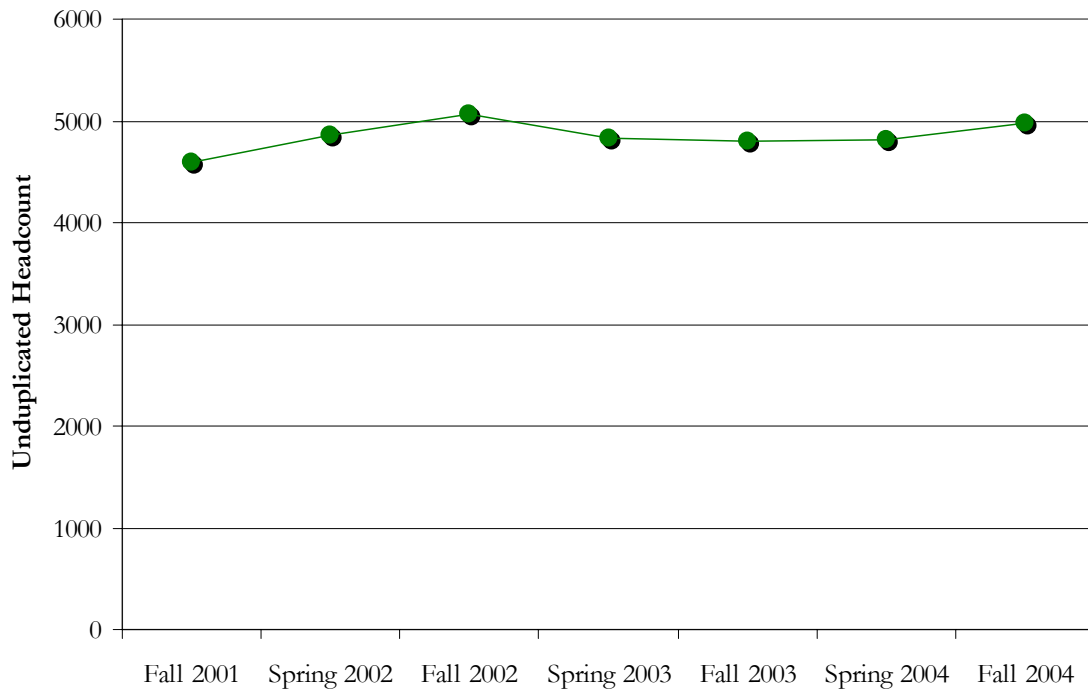
Fall 2001 – Fall 2004

Highlights

- Fall 2004 headcount is similar to previous semesters.
- Proportionately more students are continuing from Spring compared to previous Fall semesters.
- The median age of Gavilan students has remained at about 25 years old.
- Gender proportions have remained fairly constant with about 3 females for every 2 males.
- Latinos are the most numerous ethnic group and are proportionately increasing with White, non-Hispanics being next most abundant.

This report is available at www.gavilan.edu/research.

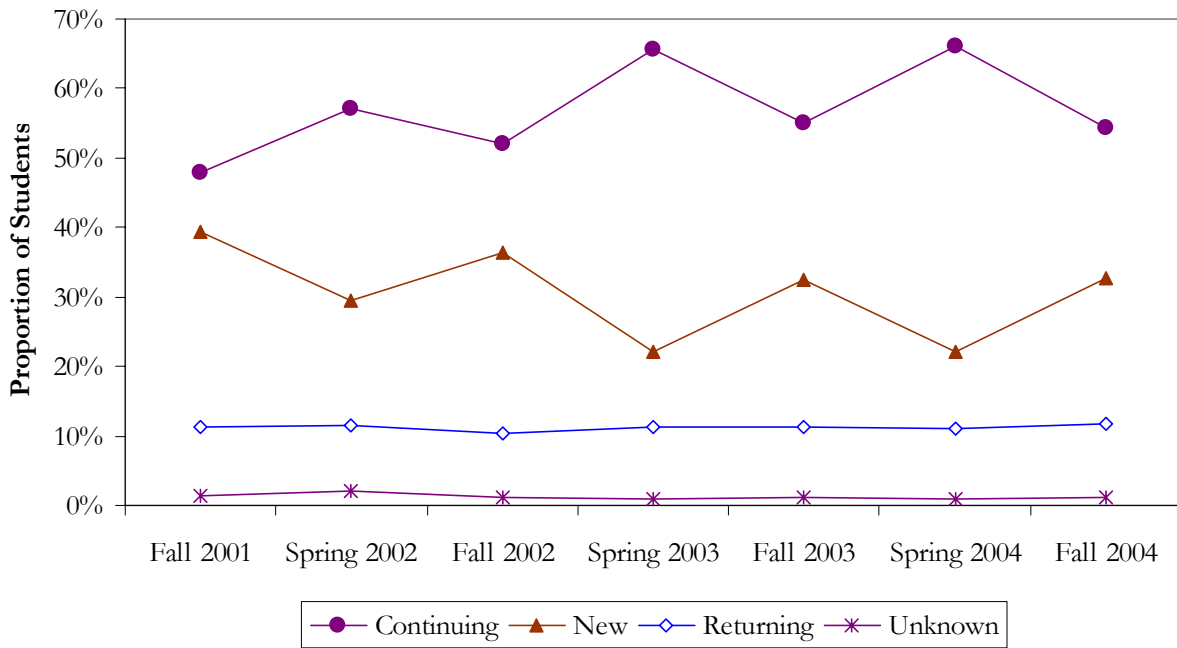
Terrence Willett
Director of Research
September 2004



Headcounts	Fall 2001	Spring 2002	Fall 2002	Spring 2003	Fall 2003	Spring 2004	Fall 2004
Day Only	2327	2181	2511	2412	2489	2225	2500
Evening Only	956	1288	1362	1226	1077	976	1076
Both Day and Evening	1307	1393	1197	1188	1240	1609	1398
Unduplicated Headcount*	4590	4862	5070	4826	4806	4810	4974

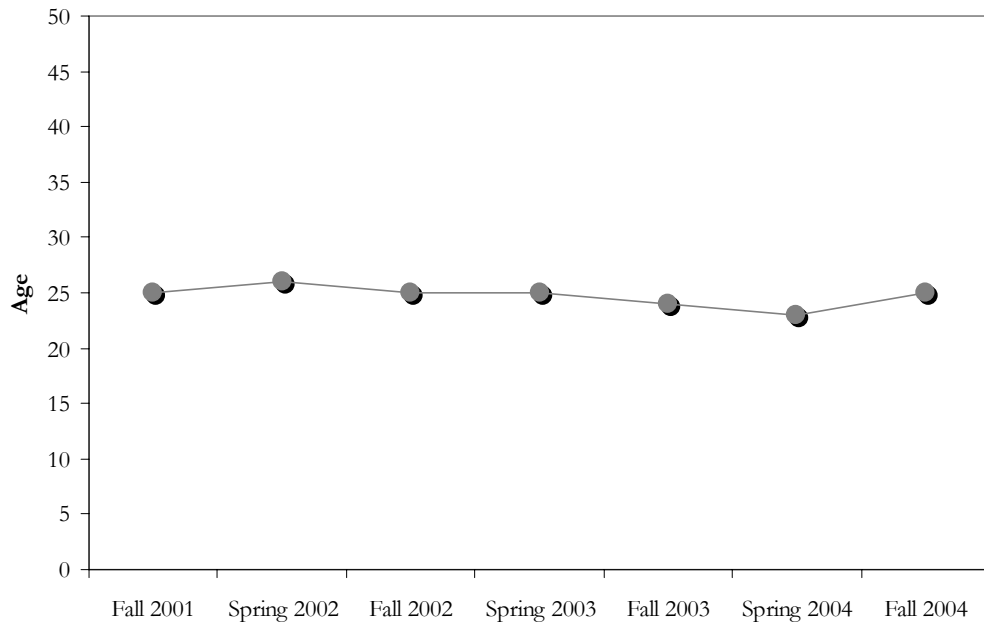
* note that these headcounts are from the end of registration and are not official census date headcounts

Enrollment Status of Gavilan College Students



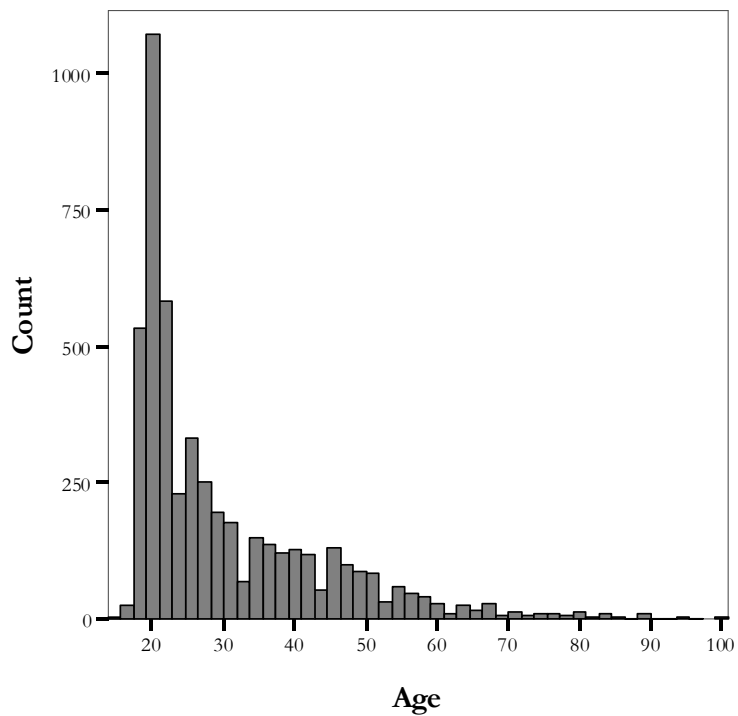
Enrollment Status	Fall 2001	Spring 2002	Fall 2002	Spring 2003	Fall 2003	Spring 2004	Fall 2004
Continuing	48%	57%	52%	66%	55%	66%	54%
New	39%	29%	36%	22%	32%	22%	33%
Returning	11%	11%	10%	11%	11%	11%	12%
Unknown	1%	2%	1%	1%	1%	1%	1%

Median Age of Gavilan College Students

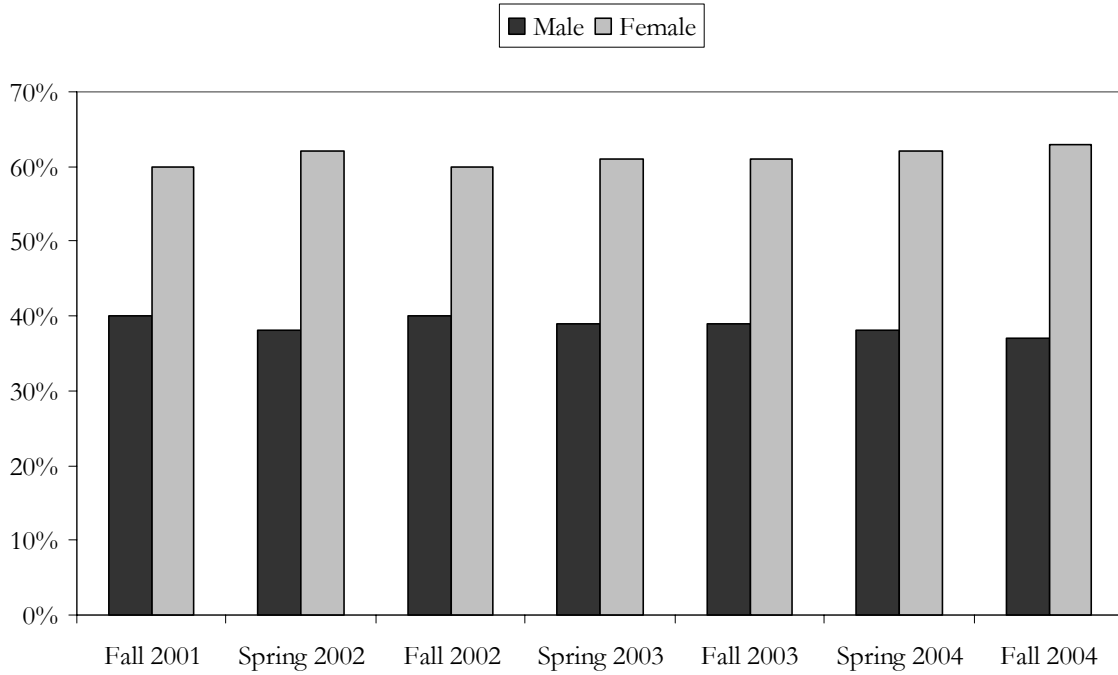


	Fall 2001	Spring 2002	Fall 2002	Spring 2003	Fall 2003	Spring 2004	Fall 2004
Median Age	25	26	25	25	24	23	25

Age Distribution of Gavilan College Students Fall 2004

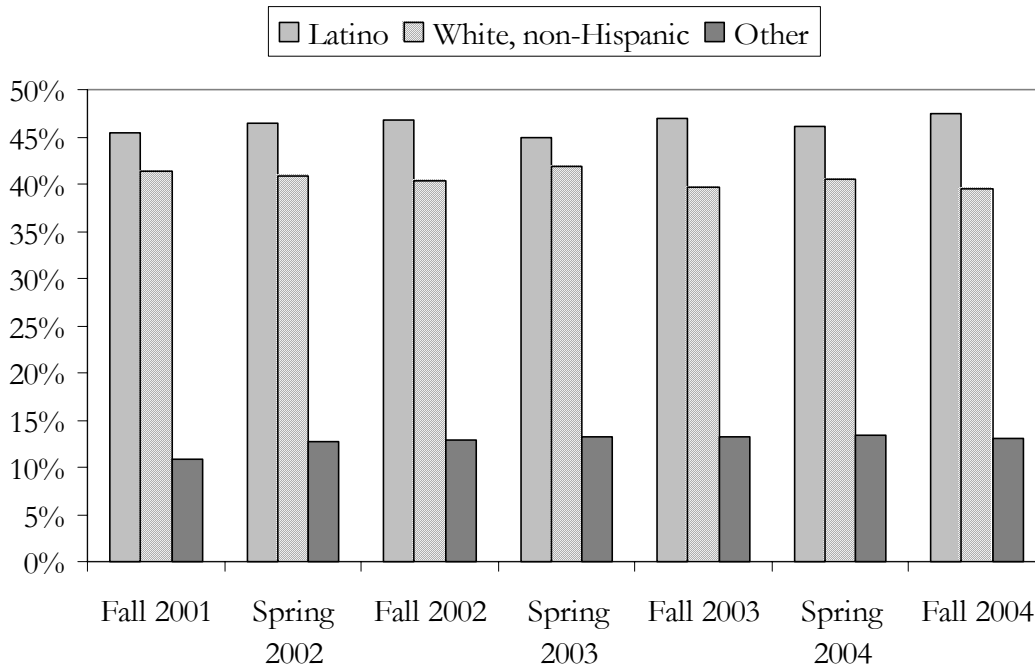


Gender of Gavilan College Students



Gender	Fall 2001	Spring 2002	Fall 2002	Spring 2003	Fall 2003	Spring 2004	Fall 2004
Male	40%	38%	40%	39%	39%	38%	37%
Female	60%	62%	60%	61%	61%	62%	63%

Ethnicities of Gavilan College Students



	Fall 2001	Spring 2002	Fall 2002	Spring 2003	Fall 2003	Spring 2004	Fall 2004
African American	1.7%	1.8%	1.9%	1.7%	2.2%	2.1%	2.3%
Asian/Pac. Isl.	4.5%	4.4%	4.9%	5.5%	5.0%	5.6%	5.5%
Latino	45.4%	46.4%	46.7%	45.0%	47.0%	46.1%	47.5%
Native American	0.0%	0.7%	0.7%	0.9%	0.8%	0.7%	0.8%
Other/Unknown	4.6%	5.9%	5.5%	5.1%	5.2%	5.0%	4.4%
White, non-Hisp.	41.4%	40.8%	40.3%	41.9%	39.7%	40.5%	39.5%