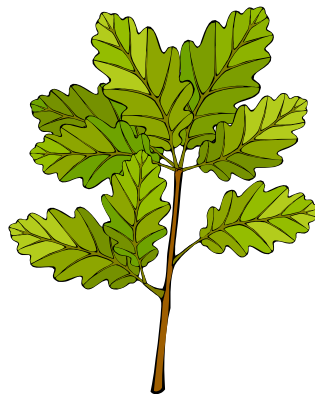




**Gavilan Community College
Performance Indicators and Goals 2003-2004**



**Research Office
June 2005**

printed on 100% post-consumer waste recycled paper

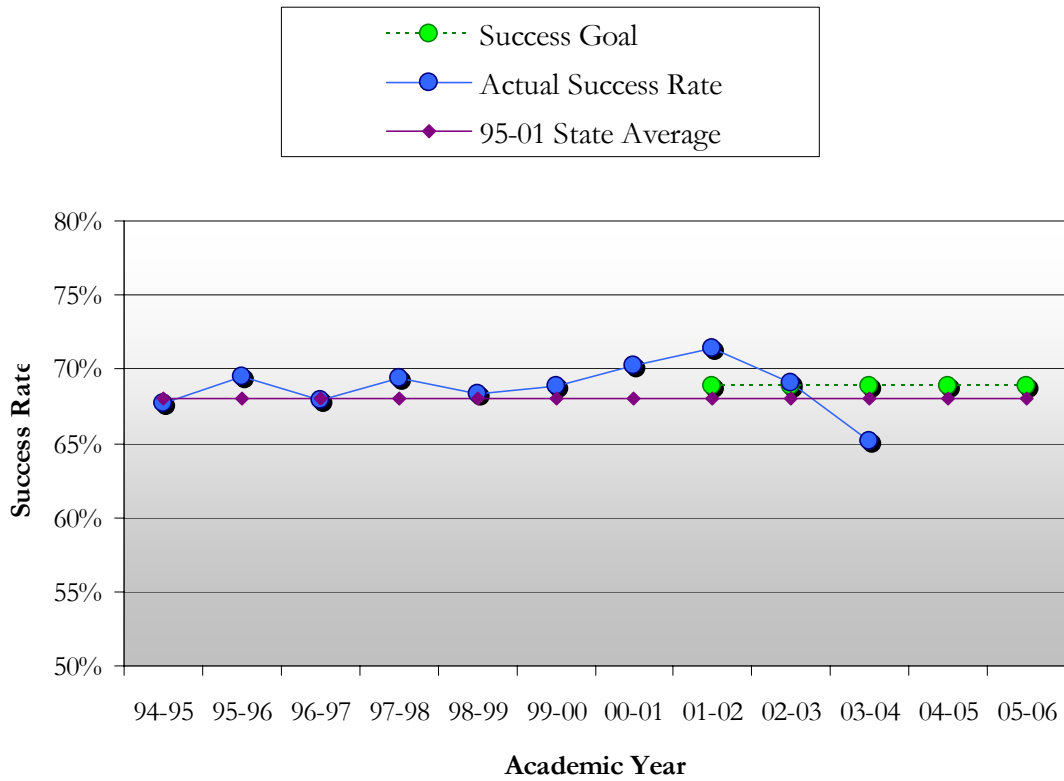
Gavilan Performance Indicators and Goals

To help evaluate college performance and focus the planning and instructional efforts of Gavilan, several key variables have been selected as indicators of our academic accomplishments.

These variables are:

1. Course Success Rates
 - Percent of enrollments earning a C or better
2. Course Retention Rates
 - Percent of enrollments not resulting in a withdrawal
3. Persistence Rates
 - Percent of Fall non-JPA enrollees attending the following Spring
4. Award Rates
 - Actual number of awards
 - Proportion of awards conferred by Gavilan students out of all California Community College awards
5. Transfer Rates
 - Actual number of UC and CSU transfers
 - Proportion of transfer intent students who are transfer ready or transfer prepared
 - Proportion of Gavilan student transfers out of all California Community College transfers to UC and CSU
6. Population Participation Rates
 - Proportion of enrollees out of local population by city
 - Comparative ethnic proportions of Gavilan students and local residents

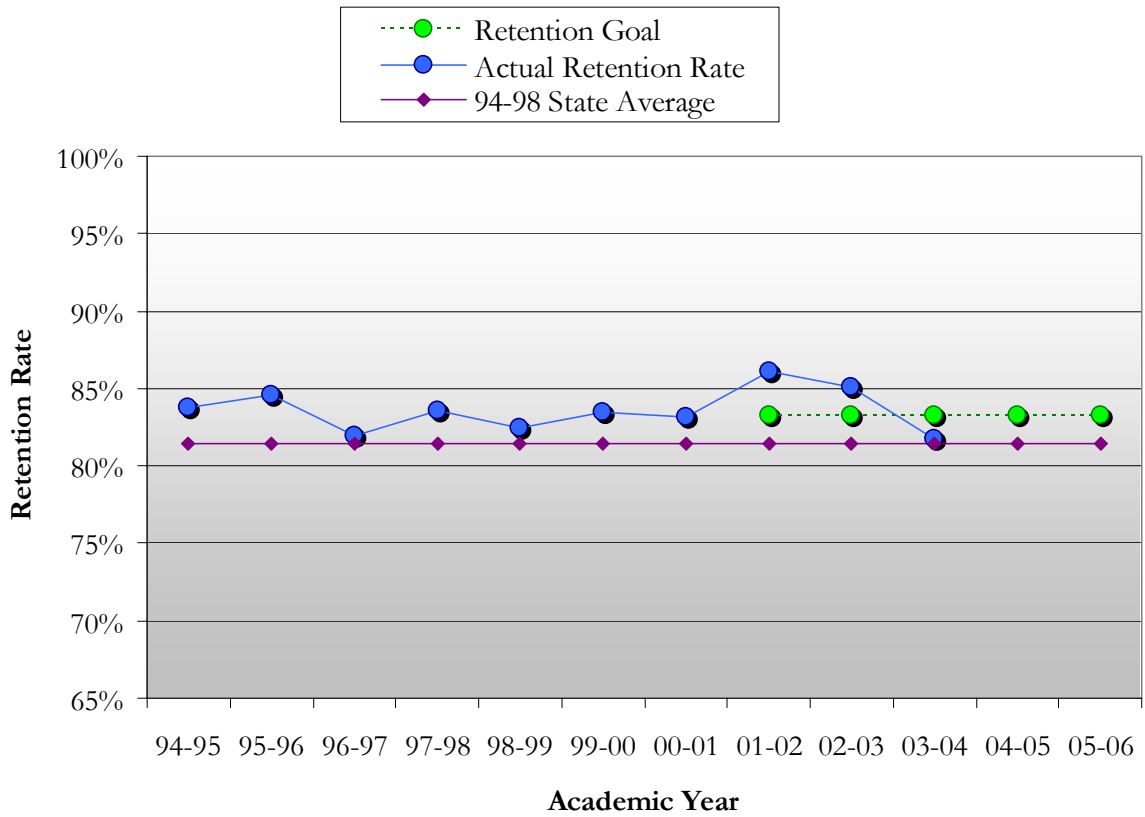
Success Rates for Gavilan College



Goal: Maintain our historical average.

Academic Year	Success Rate
94-95	68%
95-96	69%
96-97	68%
97-98	69%
98-99	68%
99-00	69%
00-01	70%
01-02	71%
02-03	69%
03-04	65%

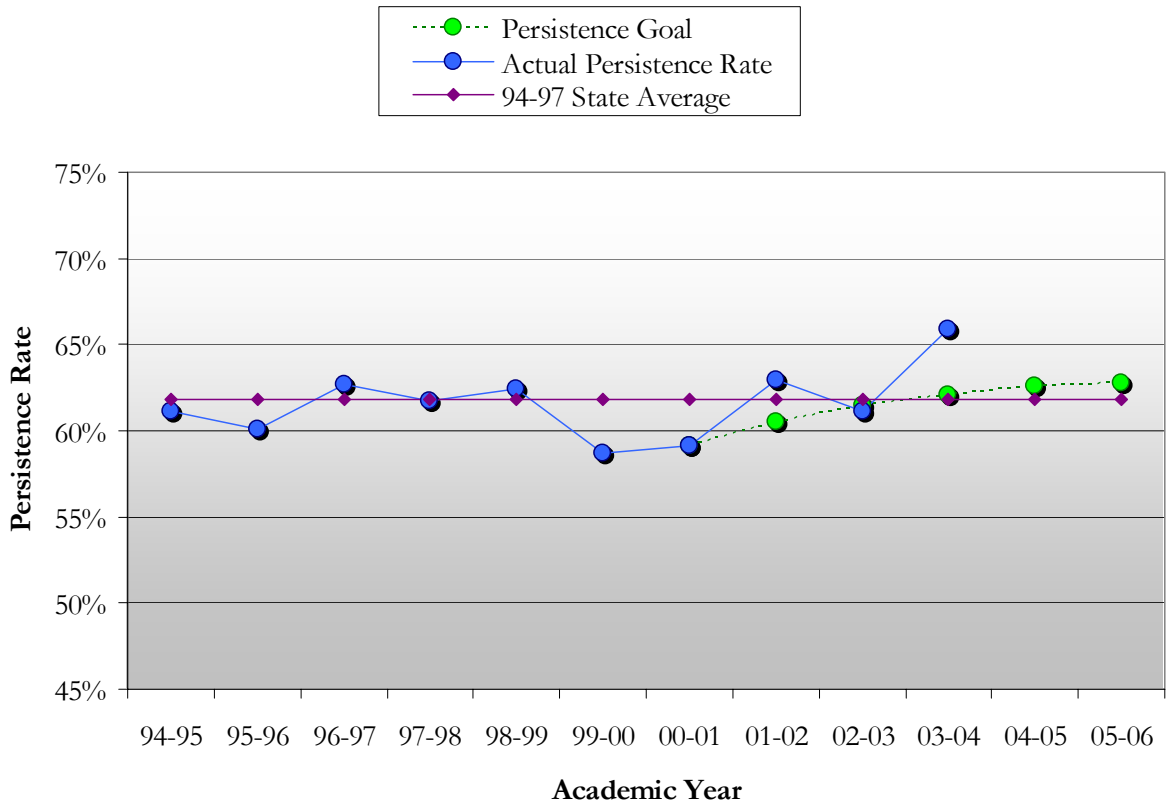
Retention Rates for Gavilan College



Goal: Maintain our historical average.

Academic Year	Retention Rate
94-95	84%
95-96	85%
96-97	82%
97-98	84%
98-99	82%
99-00	83%
00-01	83%
01-02	86%
02-03	85%
03-04	82%

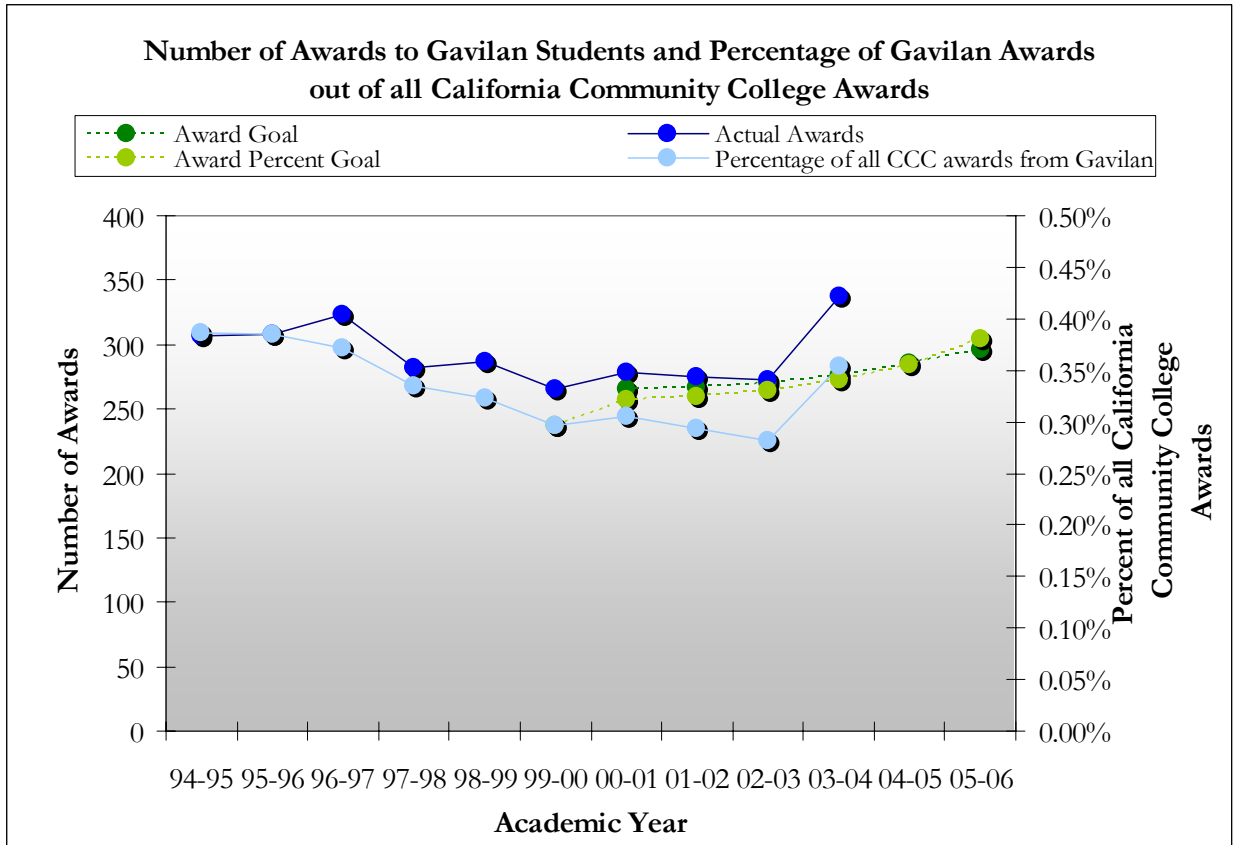
Persistence Rates for Gavilan College



Goal: Meet and exceed the State average by 1 point by the 2005-2006 academic year.

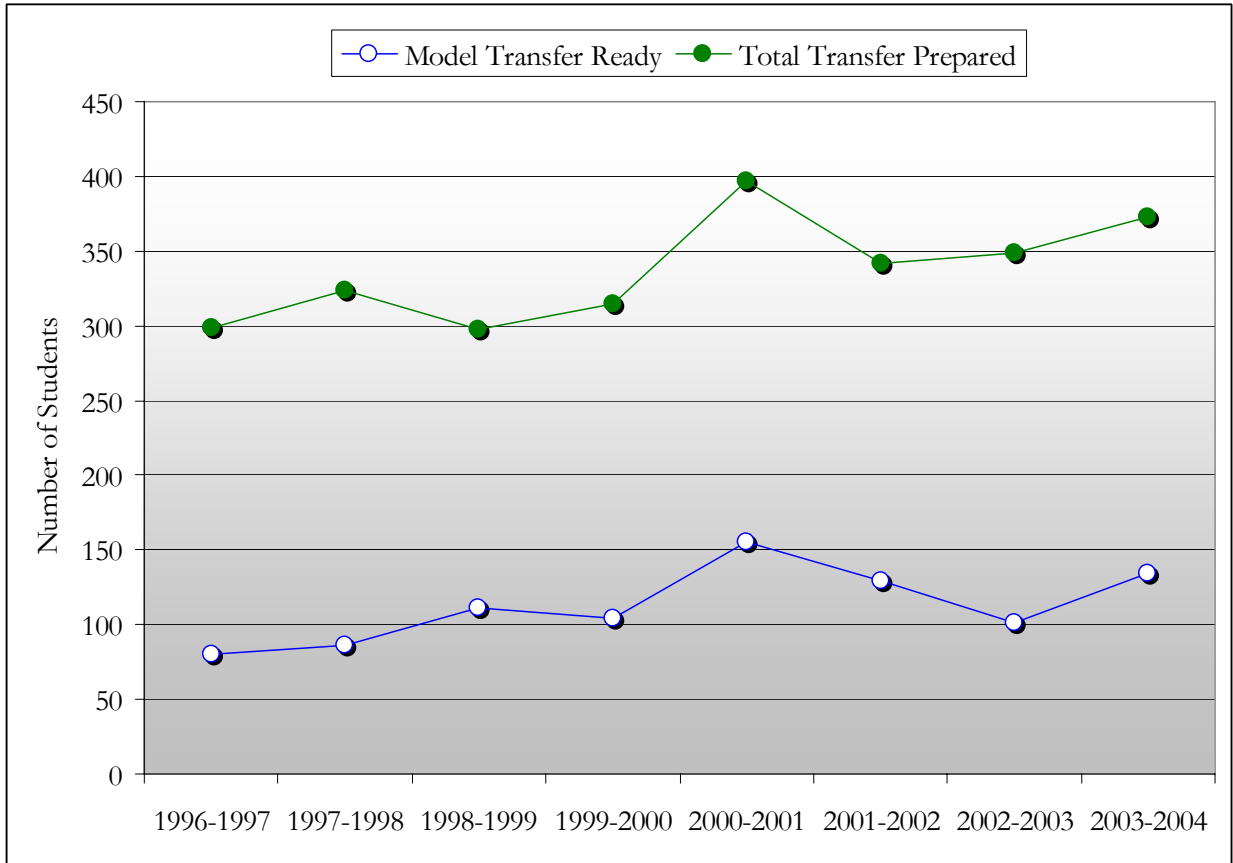
Academic Year	Persistence Rate
94-95	61%
95-96	60%
96-97	63%
97-98	62%
98-99	62%
99-00	59%
00-01	59%
01-02	63%
02-03	61%
03-04	66%

Data do not include police or fire academy students as they typically complete their educational goals within a single term.



Goal: End the decline and return to the 1995-2001 average by the 2005-2006 academic year.

Academic Year	Gavilan Awards	CCC Awards	Percentage of all CCC awards from Gavilan
94-95	307	79,402	0.39%
95-96	308	80,094	0.38%
96-97	323	86,813	0.37%
97-98	282	84,179	0.34%
98-99	287	88,978	0.32%
99-00	266	89,598	0.30%
00-01	278	90,994	0.31%
01-02	275	93,478	0.29%
02-03	272	96,372	0.28%
03-04	337	95,217	0.35%



In July 2000, the California Community College Chancellor’s Office created definitions of transfer ready students for the Partnership for Excellence:

Transfer Directed = Successfully completed transferable Math and English within 6 years.

Directed Rate = proportion of transfer directed within an academic year.

Transfer Ready = A directed student with 56 or more transferable units and a 2.0 GPA.

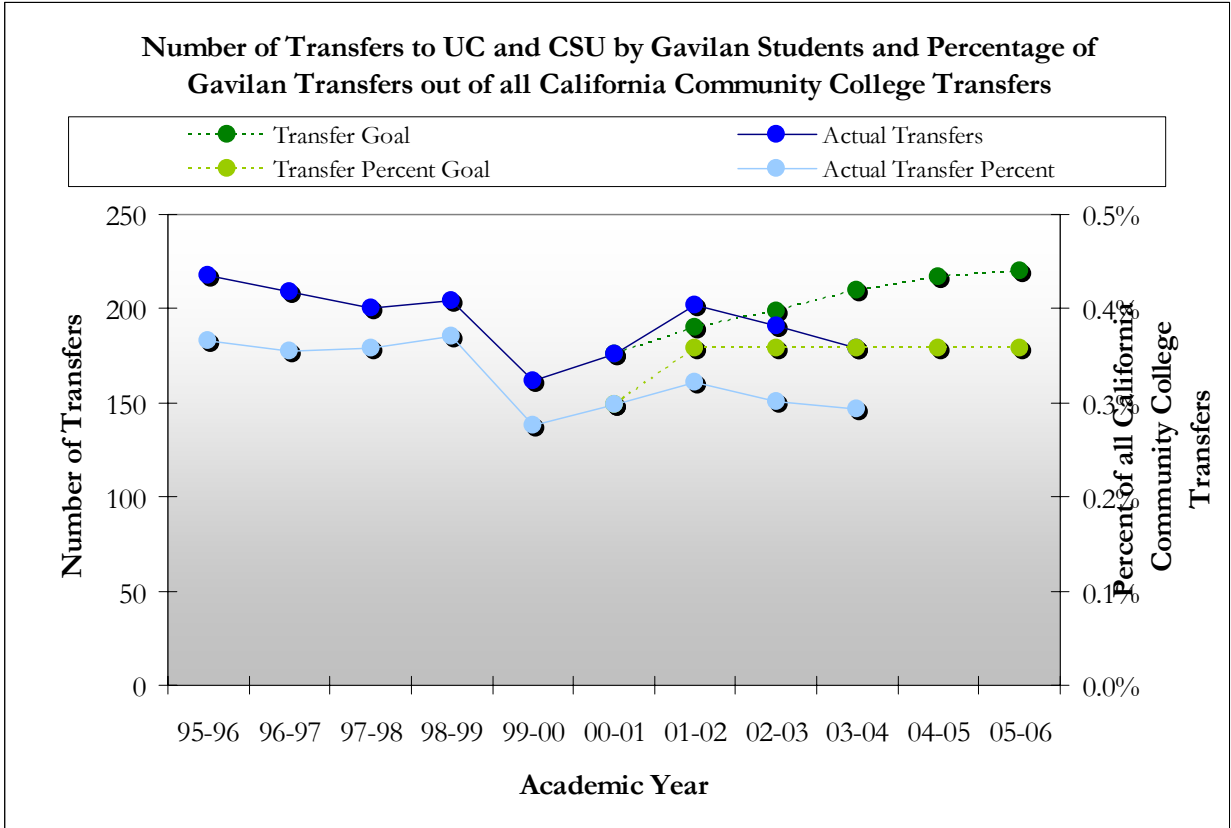
Model Ready Rate = proportion of transfer directed students who become transfer ready

Transfer Prepared = a student with 56 or more transferable units and a 2.0 GPA

Goal: Continue the increasing the number of transfer ready students.

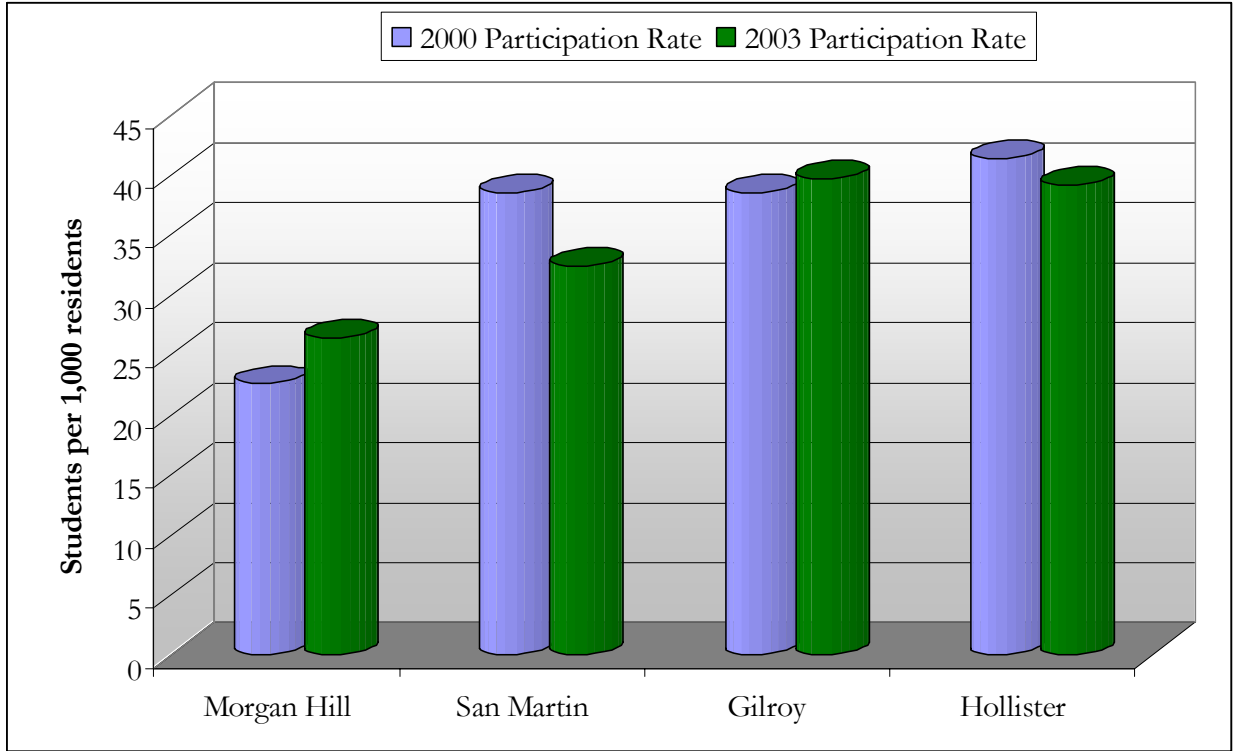
Academic Year	Total Credit Students	Total Transfer Directed	Directed Rate	Model Transfer Ready	Model Ready Rate	Total Transfer Prepared
96-97	6,772	302	4.46%	80	26.49%	299
97-98	7,621	306	4.02%	86	28.10%	324
98-99	8,485	360	4.24%	111	30.83%	298
99-00	8,742	329	3.76%	104	31.61%	315
00-01	11,178	412	3.69%	155	37.62%	397
01-02	9,720	394	4.05%	129	32.74%	342
02-03	9,326	336	3.60%	101	30.06%	349
03-04	7,231	390	5.39%	134	34.36%	373

These data are from the California Community College Chancellor’s Office and include police and fire academy students.



Goal: End the previous decline and move towards historical median level by the 2005-2006 academic year.

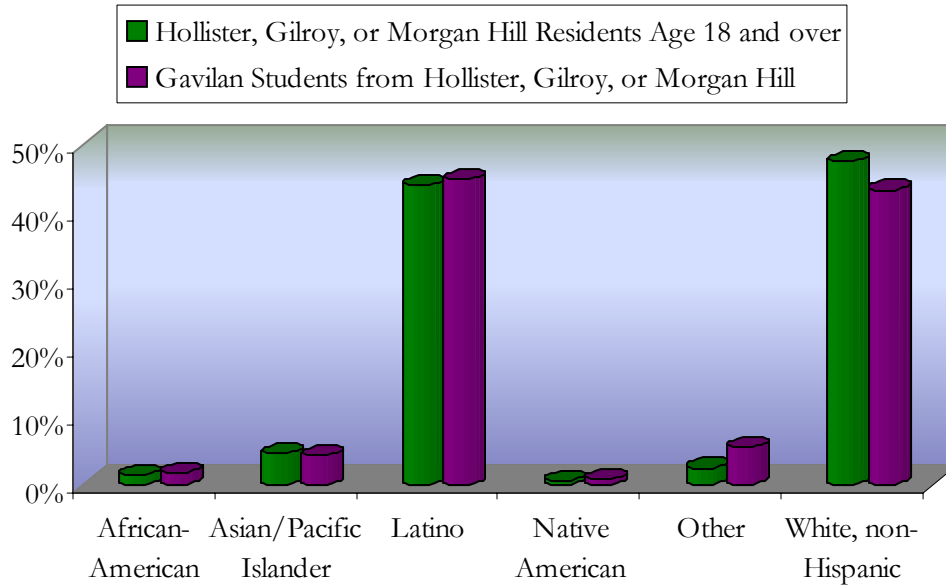
Academic Year	Gavilan UC and CSU transfers	CCC UC and CSU transfers	Percentage of State transfers from Gavilan
95-96	218	59,571	0.37%
96-97	209	58,837	0.36%
97-98	200	55,755	0.36%
98-99	204	55,150	0.37%
99-00	162	58,533	0.28%
00-01	176	59,115	0.30%
01-02	202	62,764	0.32%
02-03	191	63,524	0.30%
03-04	179	60,897	0.29%



Goal: Maintain the ppr for San Martin, Gilroy, and Hollister and enhance the ppr for Morgan Hill.

City	2000 Population	Fall 2000 Non-JPA Headcount	2000 Participation Rate	2003 Population Estimate	Fall 2003 Non-JPA Headcount	2003 Participation Rate	Participation Rate Change
Morgan Hill	33,556	758	22.6	34,128	902	26.4	3.8
San Martin	4,230	163	38.5	4,386	142	32.4	-6.2
Gilroy	41,464	1598	38.5	43,817	1740	39.7	1.2
Hollister	34,413	1422	41.3	36,555	1430	39.1	-2.2

Participation of Hollister, Gilroy, and Morgan Hill Residents aged 18 and over at Gavilan by Ethnicity



We find a fairly close ethnic correspondence between Gavilan and the top 3 cities served by Gavilan, Hollister, Gilroy, and Morgan Hill. In fact, the Gavilan student population is slightly more diverse than the cities. This is indicated by the Simpson-Gini diversity index, which can be interpreted as the probability that two individuals chosen at random will be of different ethnicities.

Goal: Maintain the close ethnic reflection of Gavilan college to the surrounding community.

Goal Status: A detailed report comparing the ethnic proportions of residents over age 18, high school seniors, and Gavilan students by each of the three main cities found a close match between the ethnicities of these groups.

	Hollister, Gilroy, or Morgan Hill Residents Age 18 and over		Gavilan Students from Hollister, Gilroy, or Morgan Hill	
	N	%	N	%
African-American	1,326	1.4%	99	1.6%
Asian/Pacific Islander	4,273	4.5%	258	4.2%
Latino	42,125	43.9%	2721	44.8%
Native American	471	0.5%	40	0.7%
Other	2227	2.3%	328	5.4%
White, non-Hispanic	45,510	47.4%	2627	43.3%
Total	95,932	100%	6,073	100%
Simpson-Gini Diversity Index	0.58		0.61	