

## Spring 2005-2006 FTES Report

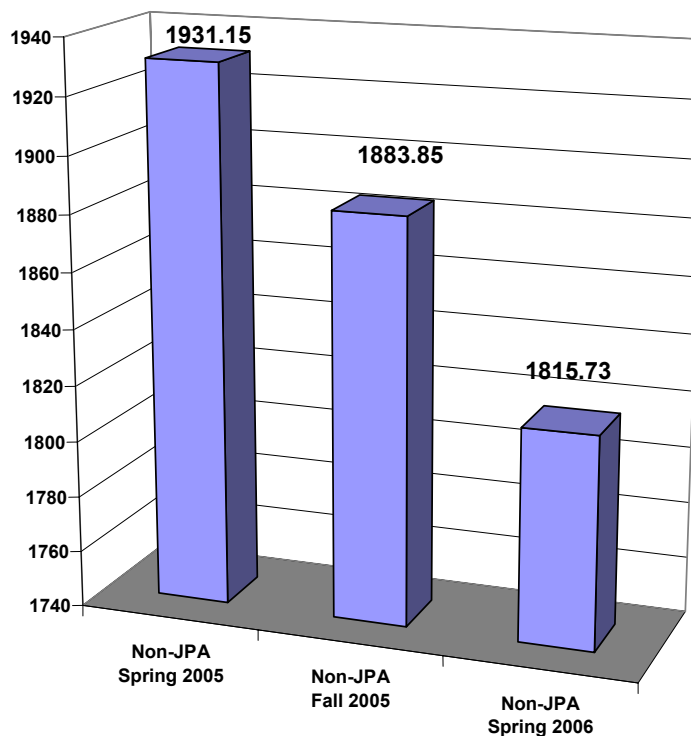
### Summary of Findings

---

#### *Gavilan College Total FTES*

- Total FTES dropped 6.3% from Spring 2005 to Spring 2006 (for non-JPA, credit/non-credit, all attendance types).<sup>1</sup>

**Total FTES, All Campuses, Credit/Non-Credit, All Attendance Types**



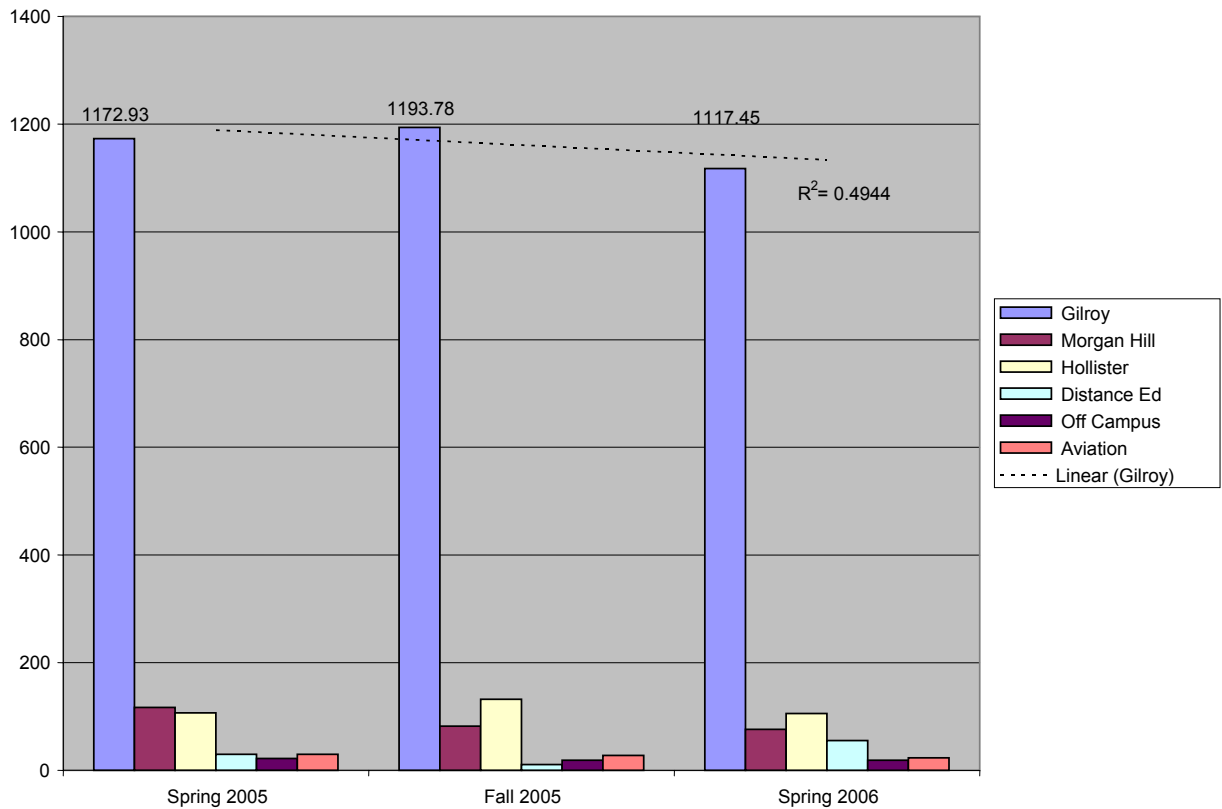
---

<sup>1</sup> FTES data are summarized from the 726 raw data file. JPA FTES has been excluded from these analyses. Final FTES for Spring 2006 is not yet available; distance education FTES may change.

### Spring to Spring FTES by Campus Location

- Although College-wide FTES decreased in Fall 2005, the Gilroy and Hollister campuses showed an increase in FTES in Fall 2005.
- Distance Education FTES was volatile, with a significant decrease in FTES from Spring 2005 to Fall 2005, but an 86% increase in Spring 2006.
- Morgan Hill FTES decreased approximately 35% by Spring 2006.

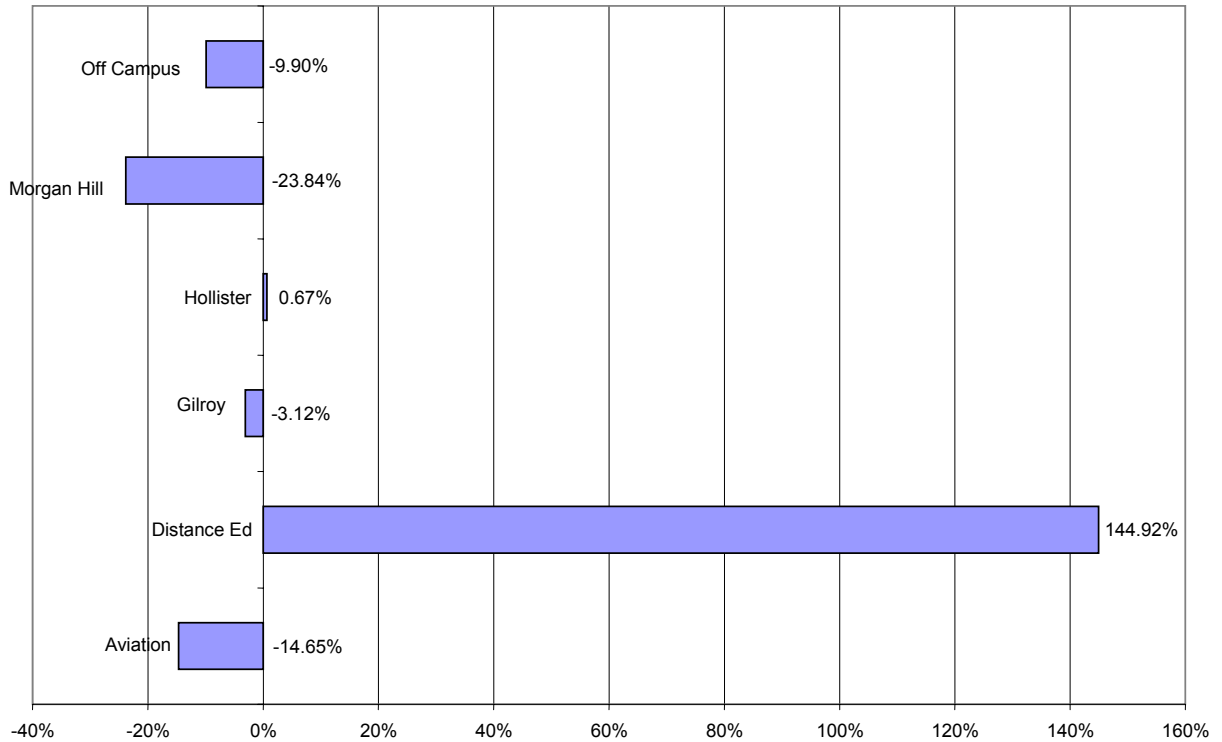
**Non-JPA FTES for Contact Hour Attendance, By Campus Location 2005-06**



Non-JPA FTES for Contact Hour Attendance			
Campus	Spring 2005	Fall 2005	Spring 2006
Gilroy	1172.93	<b>1193.78</b>	1117.45
<b>Morgan Hill</b>	<b>116.95</b>	<b>82.23</b>	<b>76.37</b>
Hollister	106.88	<b>132.2</b>	105.39
Distance Ed	29.56	<b>10.8</b>	55.23
Off Campus	21.93	18.63	18.67
Aviation	29.58	27.52	23.24

- For most campus locations, the average percentage change in FTES across the last three semesters was negative.
- The average increase in FTES for Distance Education was 145% over three semesters (large magnitude of effect here).

**Average % Change in FTES Over Three Semesters**



<b>Campus</b>	<b>Spring 2005-Fall 2005 % Change in FTES</b>	<b>Fall 2005-Spring 2006 % Change in FTES</b>	<b>Spring 2005-Spring 2006 % Change in FTES</b>
Gilroy	1.78%	-6.39%	-4.73%
<b>Morgan Hill</b>	<b>-29.69%</b>	<b>-7.13%</b>	<b>-34.70%</b>
Hollister	23.69%	-20.28%	-1.39%
<b>Distance Education</b>	<b>-63.46%</b>	<b>411.39%</b>	<b>86.84%</b>
Off Campus	-15.05%	0.21%	-14.87%
Aviation	-6.96%	-15.55%	-21.43%

### FTES by Department, College Wide

- Within academic departments, FTES for credit contact hour attendance was extremely variable.
- Some departments experienced an increase in FTES during Fall 2005 but dropped in Spring 2006, mirroring the trend at the Gilroy campus.
- Math, ESL, and English, showed significant decreases in FTES by Spring 2006; five departments experienced a gradual decrease in FTES by Spring 2006.

FTES for Credit Contact Hours				
± 3 Decrease; Increase; Variable				
Dept	Spring 2005	Fall 2005	Spring 2006	
ACCT	13.07	12	14.07	
AH	61.46	65	64.57	↑
AJ	27.3	28.7	29.2	
AMT	29.58	27.52	23.24	↓
ANTH	14.9	17.3	14.7	
ART	61.65	72.9	64.59	↓
ASTR	9.3	11.5	9.1	
ATH	17.67	39.67	13.33	↓
BIO	84.53	68.41	76.12	↓
BOT			1.5	
CD	45.4	26.67	32.63	↓
CHEM	22.16	24.33	20.87	
CMUN	36.3	43.5	44.5	↑
COS	65.94	75.83	76.99	↑
CSIS	28.64	17.05	24.23	
DM	9.26	5.66	14.87	↑
ECOL	12	9.4	8.6	↓
ECON	14.2	16.1	15.3	
ENGL	172.92	177.93	162.73	↓
ESL	147.35	118.77	123.93	↓
GBUS	7.7	9	8.9	
GEOG	6.3	4.83	6.2	
GEOL	7.4	6.4	7.2	
GUID	12.43	15.96	11.74	
HE	4.9	7.8	4.9	
HIST	48.2	45.3	47.4	
HUM	20.3	12.8	16.1	↓
JOUR	5.42	2.78	6.48	
JPN	9.25	7.75	10.25	
MATH	193.93	191.57	178.69	↓
MUS	32.01	26.32	29.82	↓
PE	76.25	87.19	61.1	↓
PHIL	16.8	15.3	14.6	
PHYS	7	11.4	8	
POLS	24	18.8	15.1	↓
PSCI	2.2	4.2	2.5	
PSYC	41.94	43.36	33.8	↓
RE		6.2	11.5	↑
SOC	33.4	28.7	26.6	↓
SPAN	43.1	43	49.3	↑
SSCI		1.6		
THEA	11.67	16.66	11.1	↓
Total	1477.83	1465.16	1396.35	

**FTES by Department and Location**

- The general pattern of college-wide variability in FTES is seen in the breakdown of FTES by academic department and campus location.
- Math Department FTES at Gilroy increased even though this department showed a significant drop in college-wide FTES in Spring 2006.

<b>Non-JPA FTES for Contact Hour Attendance by Department and Location, 2005-06</b>						
<b>Location</b>	<b>Div</b>	<b>Dept</b>	<b>Spring 2005</b>	<b>Fall 2005</b>	<b>Spring 2006</b>	
<b>Gilroy</b>	<b>DSPS</b>	GUID	7.16	6.43	7.2	
		ANTH	12.9	16.5	12.5	
		<b>ART</b>	<b>49.82</b>	<b>63.63</b>	<b>51.82</b>	
		ASTR	6.7	4.0	6.5	
		<b>BIO</b>	<b>83.93</b>	<b>67.81</b>	<b>75.92</b>	
		CHEM	22.16	24.33	20.87	
		CMUN	26.3	35.0	35.7	
		<b>ECOL</b>	<b>12.0</b>	<b>9.4</b>	<b>8.6</b>	
		<b>ENGL</b>	<b>133.36</b>	<b>141.17</b>	<b>135.26</b>	
		ENGR				
	<b>ESL</b>	<b>135.35</b>	<b>101.1</b>	<b>108.76</b>		
	GEOG	1.8				
	GEOL	7.4	6.4	7.2		
	HIST	36.3	33.3	38.3		
	<b>HUM</b>	<b>20.3</b>	<b>12.8</b>	<b>13.2</b>		
	JOUR	5.42	2.78	6.48		
	JPN	9.25	7.75	10.25		
	MATH	134.99	137.27	137.54		
	MUS	28.88	21.79	26.75		
	<b>PE</b>	<b>52.95</b>	<b>67.89</b>	<b>41.5</b>		
	PHIL	12.6	13.5	14.6		
	PHYS	7.0	11.4	8.0		
	<b>POLS</b>	<b>17.7</b>	<b>18.8</b>	<b>12.3</b>		
	PSCI	2.2	4.2	2.5		
	<b>PSYC</b>	<b>31.14</b>	<b>32.86</b>	<b>23.3</b>		
	<b>SOC</b>	<b>20.4</b>	<b>21.9</b>	<b>14.1</b>		
	<b>SPAN</b>	<b>28.3</b>	<b>27.0</b>	<b>23.5</b>		
	SSCI		1.6			
	THEA	11.67	15.26	11.1		
		<b>SS</b>	<b>ATH</b>	<b>17.67</b>	<b>39.67</b>	<b>13.33</b>
			GUID	5.27	9.53	4.54
		<b>TPS</b>	ACCT	13.07	12.0	12.4
			AH	59.16	61.0	57.77
			AJ	20.8	24.5	23.1
			<b>CD</b>	<b>27.1</b>	<b>12.07</b>	<b>12.0</b>
			COS	65.94	75.83	76.99
			CSIS	11.91	12.05	12.27
			DM	7.23	5.66	12.6
			ECON	14.2	16.1	15.3
			GBUS	7.7	9.0	7.0
	HE		4.9	4.3	4.9	
	RE		6.2	11.5		

- Decreases in Math and English Department FTES at Morgan Hill and Hollister contributed to the decrease in college-wide FTES for those core subjects.

<b>Non-JPA FTES for Credit, Contact Hour Courses by Department and Location, 2005-06, continued</b>						
<b>Location</b>	<b>Div</b>	<b>Dept</b>	<b>Spring 2005</b>	<b>Fall 2005</b>	<b>Spring 2006</b>	
<b>Aviation</b>	<b>TPS</b>	<b>AMT</b>	<b>29.58</b>	<b>27.52</b>	<b>23.24</b>	
<b>Hollister</b>	<b>LAS</b>	ANTH		0.6		
		ART	4.4	4.5	6.1	
		ASTR		4.6		
		CMUN	4.5	5.4	3.4	
		<b>ENGL</b>	<b>17.03</b>	<b>18.06</b>	<b>11.17</b>	
		<b>ESL</b>	<b>12.0</b>	<b>17.67</b>	<b>15.17</b>	
		GEOG	4.5		5.0	
		HIST	5.2	12.0	5.0	
		<b>MATH</b>	<b>27.2</b>	<b>28.27</b>	<b>19.33</b>	
		MUS			1.6	
		PHIL		1.8		
		POLS	1.6		2.8	
		PSYC	5.6	9.1	4.4	
	SOC	8.9	6.8	9.7		
	SPAN	8.3	12.1	13.05		
		<b>TPS</b>	ACCT			1.67
			CD	4.4	6.3	4.4
			CSIS	3.25	1.5	2.6
			HE		3.5	
	<b>Morgan Hill</b>	<b>LAS</b>	ANTH	2.0	0.2	
ART			3.83	4.67	2.87	
ASTR			2.6	2.9	2.6	
CMUN			5.5	3.1	5.4	
<b>ENGL</b>			<b>11.13</b>	<b>16.1</b>	<b>4.4</b>	
GEOG				4.83	1.2	
HIST			6.7		4.1	
<b>MATH</b>			<b>27.61</b>	<b>26.03</b>	<b>18.09</b>	
PE			4.5	3.2	3.6	
PHIL			4.2			
POLS			1.2			
PSYC			4.8	1.4	4.2	
SOC			4.1		2.8	
SPAN		6.5	3.9	4.25		
		<b>TPS</b>	AJ	6.5	4.2	6.1
			BOT			1.5
			CD	10.4	8.3	9.53
			<b>CSIS</b>	<b>13.48</b>	<b>3.4</b>	<b>1.83</b>
			DM	1.9		2.0
			GBUS			1.9
<b>Off Campus</b>	<b>LAS</b>	ENGL			1.2	
		HIST				
		MUS	3.13	2.53	1.47	
		PE	18.8	16.1	16.0	
		POLS				

<b>Non-JPA FTES for Credit, Contact Hour Courses by Department and Location, 2005-06, continued</b>					
<b>Distance Ed</b>	<b>LAS</b>	ANTH			2.2
		ART	3.6	0.1	3.8
		BIO	0.6	0.6	0.2
		ENGL	11.4	2.6	10.7
		HIST			
		HUM			2.9
		MATH	4.13		3.73
		MUS		2.0	
		POLS	3.5		
		PSYC	0.4		1.9
	SPAN			8.5	
	THEA		1.4		
	<b>TPS</b>	AH	2.3	4.0	6.8
		CD	3.5		6.7
		CSIS		0.1	7.53
		DM	0.13		0.27

***Suggestions for further investigation***

- Explore course section data for departments and campus locations where FTES has dropped to investigate whether changes in the course schedule or course offerings have affected student enrollment (see Appendix A, page 8).
- Determine whether other factors at the satellite campuses may have had an impact on enrollment in those locations.
- Obtain final Spring 2006 FTES data to get accurate picture of Distance Learning; look at all attendance types that contribute to FTES.
- Obtain statewide data on 2005-06 FTES when these become available from the Chancellor's Office and compare Gavilan's numbers with other community colleges.
- Revisit past studies on student flow to determine whether students residing in the district are enrolling at other community colleges.

# Appendix A

## *Course Section Count by Department and Location*

For credit contact hour courses for which an FTES value was actually generated; labs, etc. removed from count.

<b>Department</b>	<b>Location</b>	<b>Spring 2005</b>	<b>Fall 2005</b>	<b>Spring 2006</b>
ACCT	Gilroy	4	3	4
	Hollister			1
AH	Distance Ed	1	2	2
	Gilroy	8	8	8
AJ	Gilroy	6	6	7
	Morgan Hill	2	2	2
AMT	Aviation	3	3	3
ANTH	Distance Ed			1
	Gilroy	4	5	4
	Hollister		1	
	Morgan Hill	1	1	
ART	Distance Ed	1	1	1
	Gilroy	23	20	24
	Hollister	3	3	3
	Morgan Hill	2	2	2
ASTR	Gilroy	2	1	2
	Hollister		1	
	Morgan Hill	1	1	1
ATH	Gilroy	3	5	2
BIO	Distance Ed	1	1	1
	Gilroy	16	15	16
BOT	Morgan Hill			1
CD	Distance Ed	1		2
	Gilroy	10	7	6
	Hollister	3	3	3
	Morgan Hill	6	4	5
CHEM	Gilroy	5	5	4
CMUN	Gilroy	11	11	13
	Hollister	2	2	1
	Morgan Hill	3	1	3
COS	Gilroy	9	9	9
CSIS	Distance Ed		1	3
	Gilroy	12	9	13
	Hollister	4	3	2
	Morgan Hill	9	1	1
DM	Distance Ed	1		1
	Gilroy	6	5	8
	Morgan Hill	3		1
ECOL	Gilroy	2	2	2
ECON	Gilroy	3	4	4

Department	Location	Spring 2005	Fall 2005	Spring 2006
ENGL	Distance Ed	5	1	4
	Gilroy	70	67	74
	Hollister	6	6	4
	Morgan Hill	4	6	3
	Off Campus			1
ESL	Gilroy	29	21	20
	Hollister	3	4	4
GBUS	Gilroy	2	2	2
	Morgan Hill			1
GEOG	Gilroy	1		
	Hollister	1		1
	Morgan Hill		1	1
GEOL	Gilroy	1	1	1
GUID	Gilroy	9	13	10
HE	Gilroy	1	1	1
	Hollister		1	
HIST	Gilroy	11	9	11
	Hollister	1	3	1
	Morgan Hill	2		2
HUM	Distance Ed			1
	Gilroy	3	2	2
JOUR	Gilroy	10	7	10
JPN	Gilroy	1	1	2
MATH	Distance Ed	1		1
	Gilroy	34	27	34
	Hollister	4	4	4
	Morgan Hill	6	6	4
MUS	Distance Ed		1	
	Gilroy	25	26	28
	Hollister			1
	Off Campus	3	1	2
PE	Gilroy	41	40	38
	Morgan Hill	1	1	2
	Off Campus	5	5	5
PHIL	Gilroy	4	5	6
	Hollister		1	
	Morgan Hill	2		
PHYS	Gilroy	2	2	2
POLS	Distance Ed	1		
	Gilroy	7	6	5
	Hollister	1		1
	Morgan Hill	1		
PSCI	Gilroy	1	1	1
PSYC	Distance Ed	1		1
	Gilroy	13	9	8
	Hollister	2	4	2
	Morgan Hill	2	2	2

<b>Department</b>	<b>Location</b>	<b>Spring 2005</b>	<b>Fall 2005</b>	<b>Spring 2006</b>
RE	Gilroy		1	2
SOC	Gilroy	6	6	5
	Hollister	3	2	3
	Morgan Hill	1		1
SPAN	Distance Ed			1
	Gilroy	8	5	6
	Hollister	3	2	3
	Morgan Hill	2	1	1
SSCI	Gilroy		1	
THEA	Distance Ed		1	
	Gilroy	9	11	9
<b>Grand Total</b>		<b>520</b>	<b>465</b>	<b>500</b>