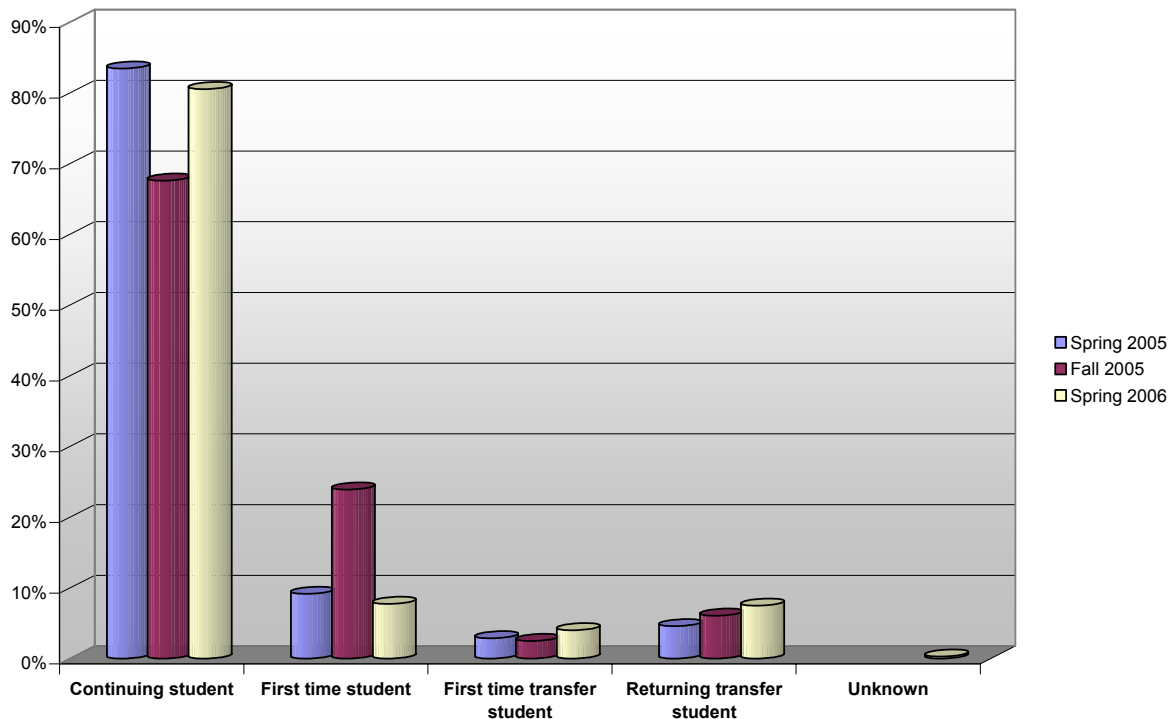


## EOPS Student Profile, Spring 2005 – Spring 2006 Summary of Findings

- EOPS continuing student enrollment averaged 77% between Spring 2005 and Spring 2006. EOPS persistence rates are very high in comparison with the college-wide average persistence rate of 49% during these semesters. Across all Gavilan student enrollments, lower continuing student and higher new student enrollment in Fall semesters is not unusual.

Enrollment Status	EOPS			College-Wide <sup>1</sup>		
	Spring 2005	Fall 2005	Spring 2006	Spring 2005	Fall 2005	Spring 2006
Continuing student	83.43%	67.58%	80.53%	52.79%	49.15%	45.52%
First time student	9.14%	23.90%	7.73%	9.59%	22.26%	9.81%
First time transfer student	2.86%	2.47%	4.00%	19.40%	14.29%	23.25%
Returning transfer student	4.57%	6.04%	7.47%	16.20%	12.95%	19.81%
Unknown			0.27%	2.01%	1.36%	1.61%

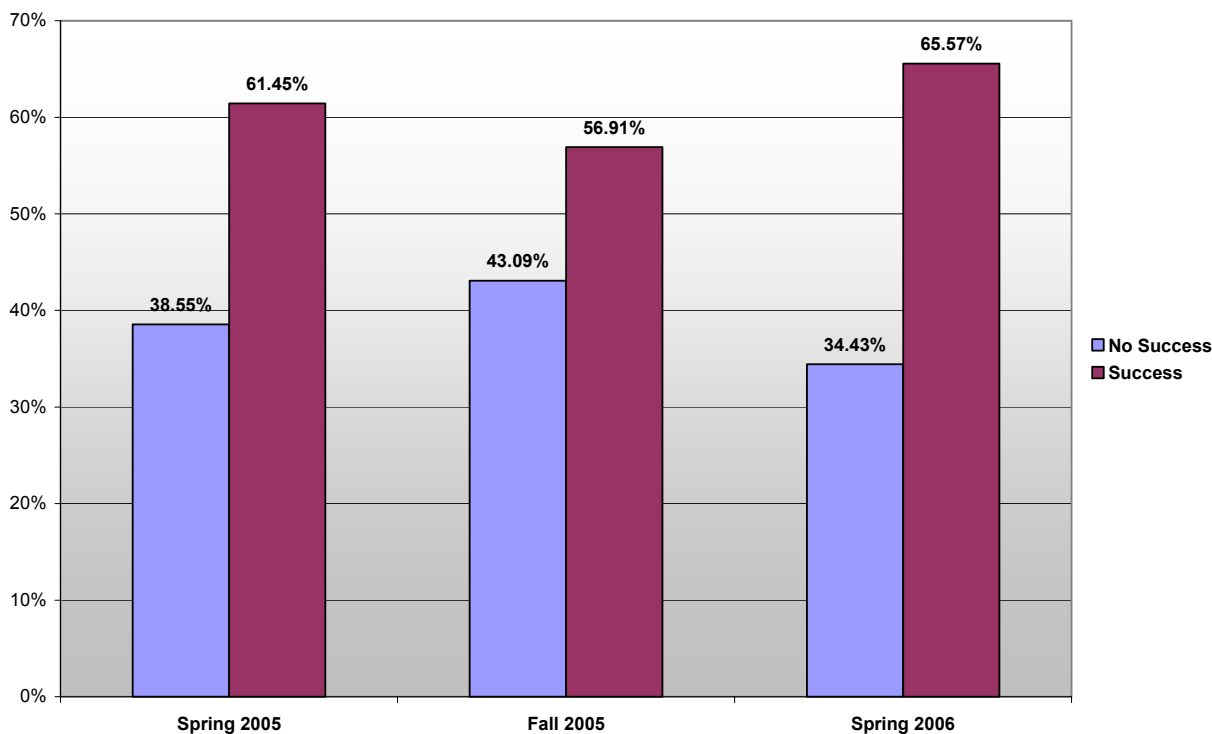
**EOPS Persistence, Spring 2005-Spring 2006**



<sup>1</sup> College-wide success includes all students enrolled during these terms, regardless of unit load. New summer students who continue to Fall are classified as new, not continuing, students by the Chancellor's Office.

- Success rates are determined by the proportion of grades indicating course success (A through C- and "credit") and grades indicating course failure (D, F, No Credit, Withdrawal). EOPS student success rates are very close to the college three-term average of 66%. The success rates calculated below do not include class grades classified as "Report Delayed," "XX," or "Ungraded." These non-grades fall outside of the Chancellor's Office categories of success/no success.

### EOPS Success Rates, Spring 2005-Spring 2006



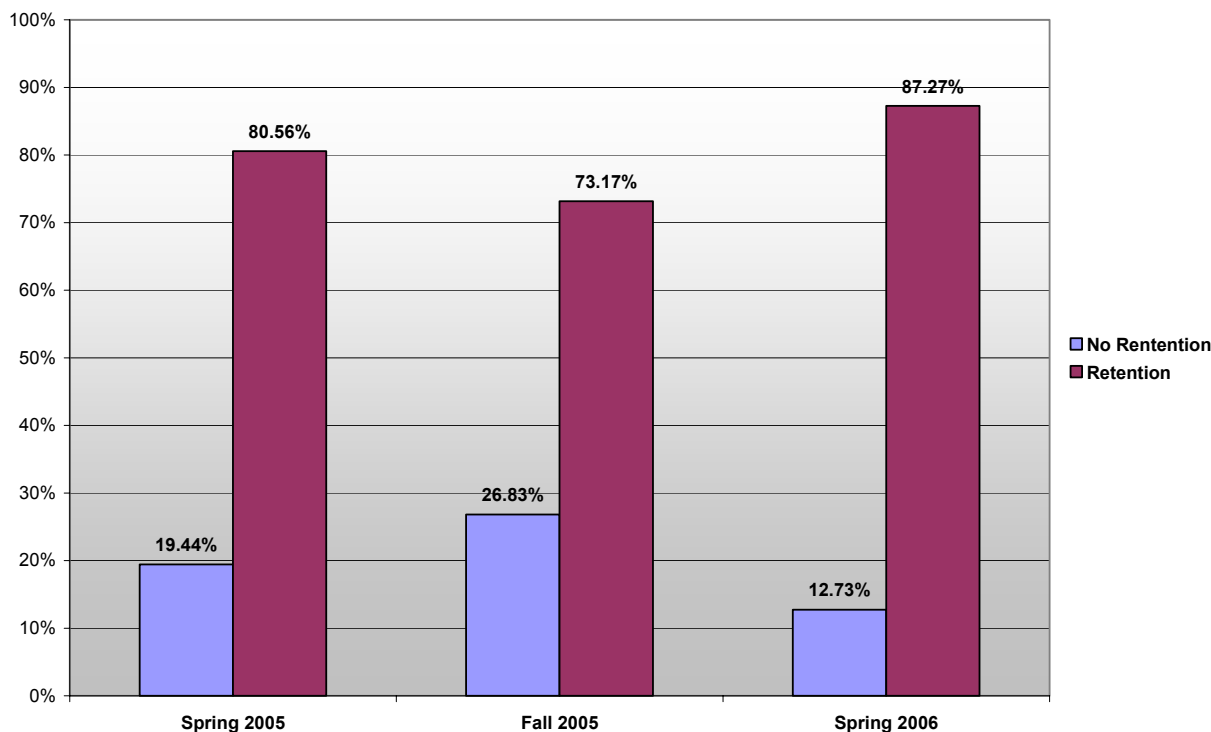
- EOPS students showed significantly more course withdrawals than failing grades of D or F in the "No Success" category. Within the "No Success" category, withdrawals comprised 50% and 62% for Spring 2005 and Fall 2005, respectively. In Spring 2006, the percentage of withdrawals dropped to 37% of all "No Success" grades.

Term	No Success	
	Withdrawal	Grade Failure
Spring 2005	50.42%	49.58%
Fall 2005	62.25%	41.60%
Spring 2006	36.96%	63.04%

- EOPS considers withdrawing from a class a retention strategy in order to maintain good academic standing.

- Retention rates indicate the proportion of students who completed coursework in any class, regardless of the grade received. Students who withdrew from any course are categorized as "Not Retained." As with success rates, all grades and withdrawals are counted to determine an overall rate of retention.
- In the graph below, students who received a classification of "Ungraded" or "Grade Report Delayed" are not included in the calculation of the rate.

**EOPS Retention Rates, Spring 2005-Spring 2006**



- Hispanic female students comprised the majority of overall participation in the EOPS program during this time. Hispanic males also constituted the largest percentage among male program participants.

Gender	Ethnicity	Spring 2005	Fall 2005	Spring 2006
Female	African-American	1.43%	1.10%	1.07%
	Asian/Pacific Islander	2.29%	2.20%	2.40%
	<b>Hispanic</b>	<b>55.43%</b>	<b>56.59%</b>	<b>55.73%</b>
	Native American	0.86%	0.82%	1.07%
	White, non-Hispanic	12.57%	13.46%	13.87%
	Other	0.29%	0.27%	0.27%
	Unknown	2.86%	1.92%	2.13%
Male	African-American	2.57%	1.92%	1.33%
	Asian/Pacific Islander	0.29%	0.00%	0.27%
	<b>Hispanic</b>	<b>18.57%</b>	<b>19.78%</b>	<b>18.40%</b>
	Native American	0.29%	0.27%	0.53%
	White, non-Hispanic	2.00%	1.37%	2.67%
	Unknown	0.57%	0.27%	0.27%
<b>Total</b>		<b>100.00%</b>	<b>100.00%</b>	<b>100.00%</b>

Approximately 32% (on average) of EOPS students indicated that their primary educational goal was to obtain an Associate's Degree and transfer to another institution. Approximately 30% of the EOPS students indicated they were "Undecided" in their educational goal (14.6%) or wished to "Obtain Job Skills" (14.6%).

