



Educational Master Plan Data Update 2006

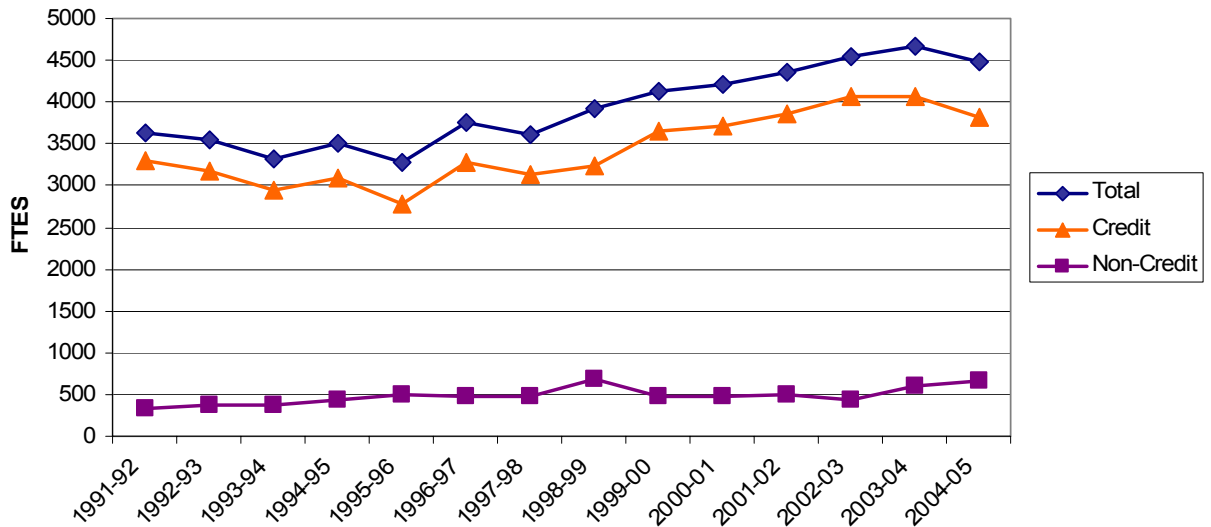
Summary of Findings

- Enrollment has been historically volatile and will likely continue to be so
- Participation rates have improved for Hollister and Gilroy
- Morgan Hill and San Martin student headcount has increased, but participation rates for those cities declined slightly
- Local populations are growing in size and diversity
- Gavilan students mirror local demographics closely
- The majority of incoming students continue to require pre-college remediation especially in mathematics
- The last two years have seen an increase in awards (degrees and certificates)
- Transfers to UC/CSU have increased, reflecting the recently observed increase in transfer prepared students
- There exists differential course success rates by some demographic groups for Math and English gateway classes
- In general, economic conditions have improved slightly since the dot-com collapse, although median income has not increased and the availability of affordable housing is the lowest since 1998
- Santa Clara County and surrounding regions have experienced the first net increase in jobs since 2001
- The median cost of homes in Santa Clara and San Benito Counties continues to rise

Elizabeth McKean
Director of Research

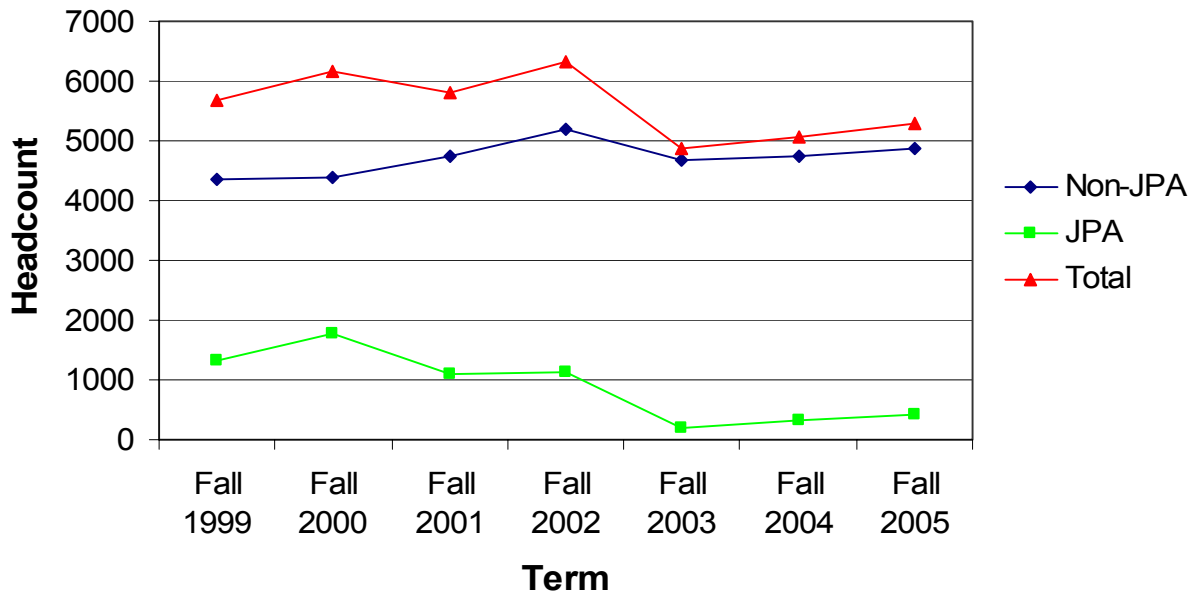
Enrollments

Gavilan College FTES Trends



Academic Year	Total		Credit		Non-Credit	
	FTES	Change	FTES	Change	FTES	Change
1990-1991	3655.34	na	3327.35	na	327.99	na
1991-1992	3635.38	-0.55%	3298.66	-0.86%	336.72	2.66%
1992-1993	3543.79	-2.52%	3179.78	-3.60%	364.01	8.10%
1993-1994	3326.69	-6.13%	2942.93	-7.45%	383.76	5.43%
1994-1995	3516.05	5.69%	3085.44	4.84%	430.61	12.21%
1995-1996	3269.08	-7.02%	2775.24	-10.05%	493.84	14.68%
1996-1997	3744.96	14.56%	3273.66	17.96%	471.3	-4.56%
1997-1998	3608.5	-3.64%	3135.27	-4.23%	473.23	0.41%
1998-1999	3926.06	8.80%	3231.99	3.08%	694.07	46.67%
1999-2000	4131.8	5.24%	3648.11	12.88%	483.69	-30.31%
2000-2001	4203.94	1.75%	3719.13	1.95%	484.81	0.23%
2001-2002	4351.46	3.89%	3860.46	5.00%	491.04	-4.68%
2002-2003	4545.27	4.45%	4071.34	5.46%	431.89	-12.05%
2003-2004	4666.75	2.67%	4057.29	-0.35%	609.46	41.11%
2004-2005	4484.25	-3.91%	3815.6	-5.97%	668.95	9.76%

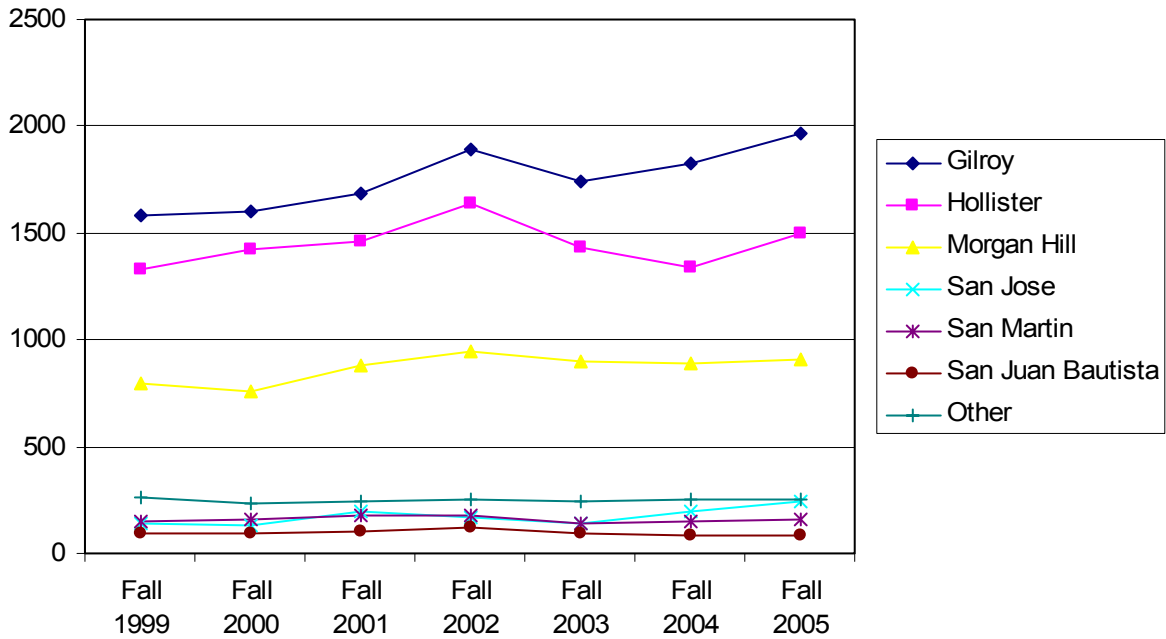
Gavilan College Enrollment Trends



Term	Non-JPA			JPA			Total		
	Headcount	Absolute Change	Percent Change	Headcount	Absolute Change	Percent Change	Headcount	Absolute Change	Percent Change
Fall 1999	4356			1307			5663		
Fall 2000	4401	45	1%	1772	465	36%	6173	510	9%
Fall 2001	4739	338	8%	1081	-691	-39%	5820	-353	-6%
Fall 2002	5191	452	10%	1126	45	4%	6317	497	9%
Fall 2003	4691	-500	-10%	196	-930	-83%	4887	-1430	-23%
Fall 2004	4744	53	1%	329	133	68%	5073	186	4%
Fall 2005	4874	130	3%	426	97	29%	5300	227	4%

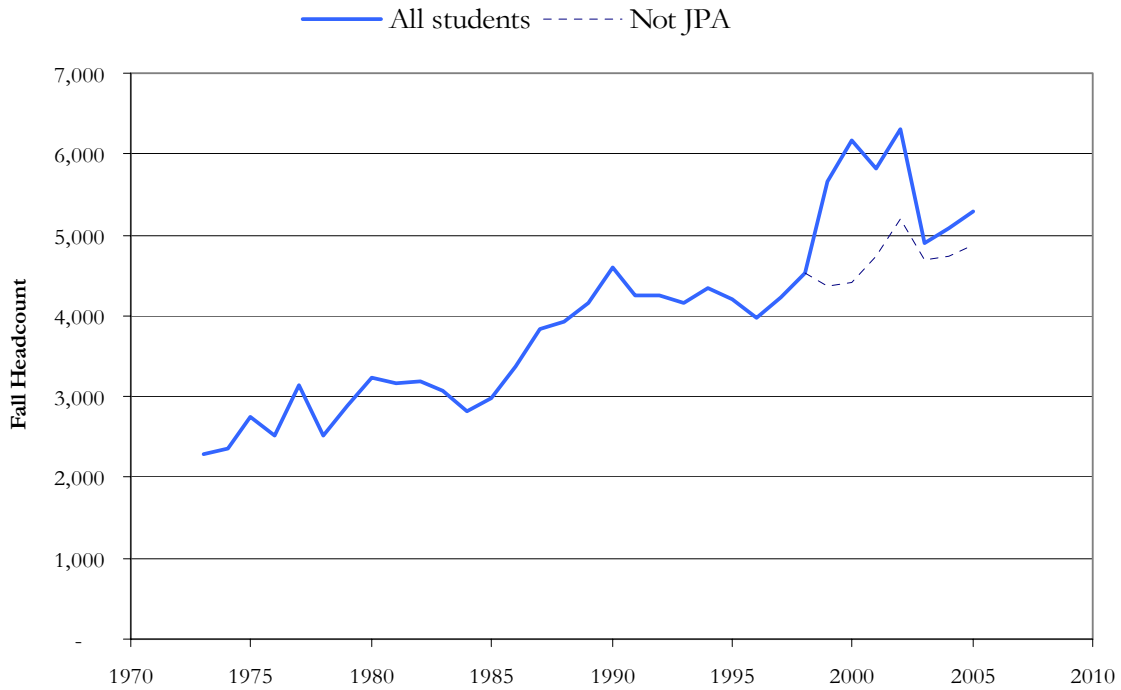
Data do not include students with a grade of 'XX'

Headcount by City for Non-JPA Students



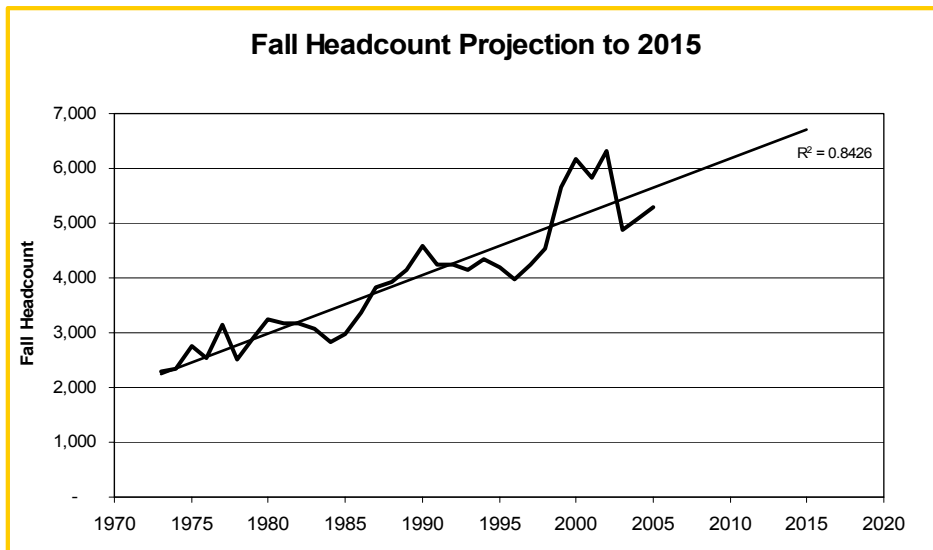
City		Fall 1999	Fall 2000	Fall 2001	Fall 2002	Fall 2003	Fall 2004	Fall 2005
Gilroy	Headcount	1586	1598	1685	1895	1740	1827	1963
	Change	-	0.8%	5.4%	12.5%	-8.2%	5.0%	7.44%
Hollister	Headcount	1331	1422	1458	1638	1430	1343	1495
	Change	-	6.8%	2.5%	12.3%	-12.7%	-6.1%	11.32%
Morgan Hill	Headcount	799	758	879	946	902	889	906
	Change	-	-5.1%	16.0%	7.6%	-4.7%	-1.4%	1.91%
San Jose	Headcount	139	130	196	168	143	197	241
	Change	-	-6.5%	50.8%	-14.3%	-14.9%	37.8%	22.34%
San Martin	Headcount	147	163	175	177	142	153	158
	Change	-	10.9%	7.4%	1.1%	-19.8%	7.7%	3.27%
San Juan Bautista	Headcount	94	97	103	118	90	81	83
	Change	-	3.2%	6.2%	14.6%	-23.7%	-10.0%	2.47%
Other	Headcount	260	233	243	249	244	254	256
	Change	-	-10.4%	4.3%	2.5%	-2.0%	4.1%	0.79%

Gavilan College Enrollment 1970-2005

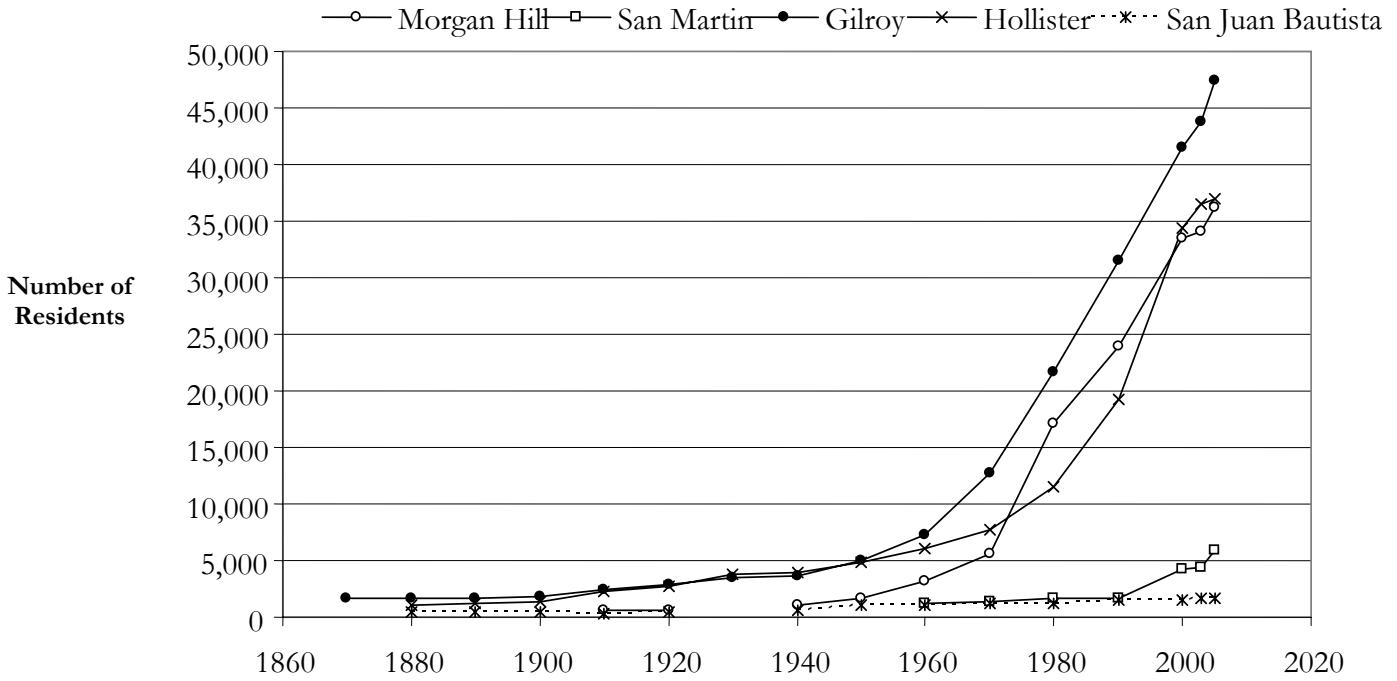


City	2003 Population Estimate	Fall 2003 Non-JPA Headcount	2003 Participation Rate	2005 Population Estimate	Fall 2005 Non-JPA Headcount	2005 Participation Rate	Participation Rate Change
Morgan Hill	34,128	902	26.4	36,279	906	25.0	-1.4
San Martin	4,386	142	32.4	5,936	158	26.6	-5.8
Gilroy	43,817	1740	39.7	47,482	1963	41.3	+1.6
Hollister	36,555	1430	39.1	37,020	1495	40.4	+1.3

Participation Rates are the number of students per 1,000 residents



Local Population



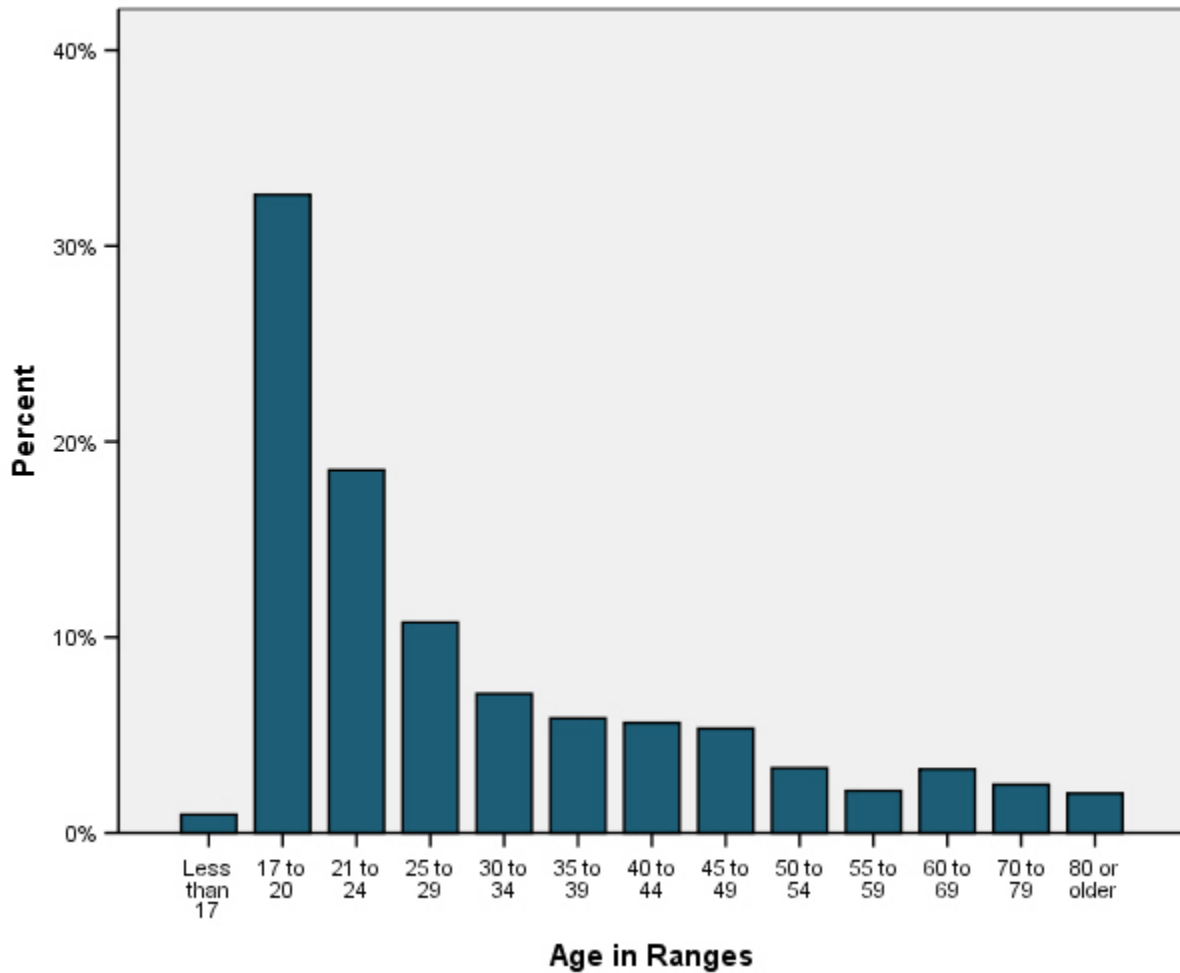
Year	Morgan Hill	San Martin	Gilroy	Hollister	San Juan Bautista
2005	36,279	5,936	47,482	37,020	1,723
2003	34,128	4,386	43,817	36,555	1,675
2000	33,556	4,230	41,464	34,413	1,549
1990	23,928	1,713	31,487	19,212	1,570
1980	17,060	1,731	21,641	11,488	1,276
1970	5,579	1,429	12,665	7,663	1,164
1960	3,151	1,162	7,348	6,071	1,046
1950	1,627		4,951	4,903	1,031
1940	1,014		3,615	3,881	678
1930	na		3,502	3,757	na
1920	646		2,862	2,781	501
1910	607		2,437	2,308	326
1900			1,820	1,315	449
1890			1,694	1,234	463
1880			1,621	1,034	484
1870			1,625		

Gavilan College Service Area Selected Demographics

	Estimated Value, 2005	Percent
Total population	138,158	
Males	70,461	51%
Females	52,264	49%
Median age in years	33	
18 years and over	95,329	69%
65 years and over	9,671	7%
One race	131,250	95%
Two or more races	6,907	5%
Hispanic	60,790	44%
White non-Hispanic	63,553	46%
African American	1,851	1%
Native American	1,589	1%
Asian	7,087	5%
Pacific Islander	276	.2%
Total households	40,853	
Households with individuals under 18 years	20,425	50%
Households with individuals 65 years and over	7,354	18%
Family households	33,090	81%
Family households with own children under 18 years	18,383	45%
Family households consisting of a married-couple family with own children under 18 years	14,707	36%
Family households consisting of a female householder, no husband present, with own children under 18 years	2,451	6%
Non-family households	7,762	19%
Average household size	3.3	
Average family size	3.6	

Student Demographics

Age Distribution of Non-JPA Students, 2005



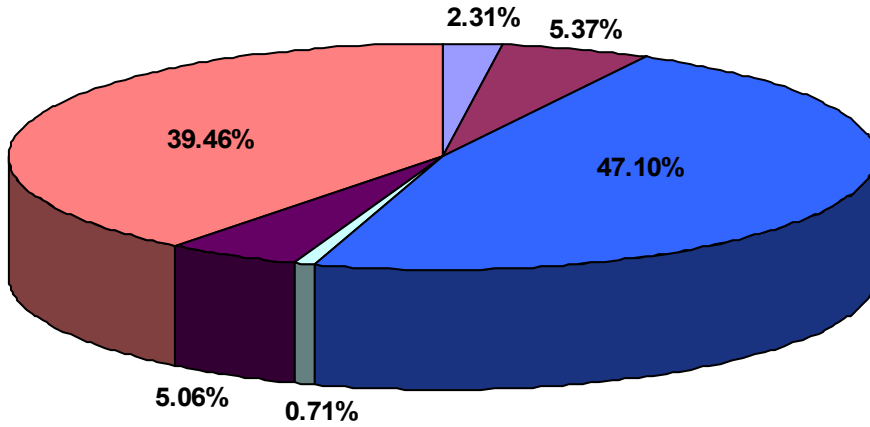
	Fall 1999	Fall 2000	Fall 2001	Fall 2002	Fall 2003	Fall 2004	Fall 2005
Median Age	24	25	24	24	23	23	24

The median age is the age that half of students exceed. This table includes data for non-JPA students only.

Ethnic Distribution of Non-JPA Students

Fall 2005

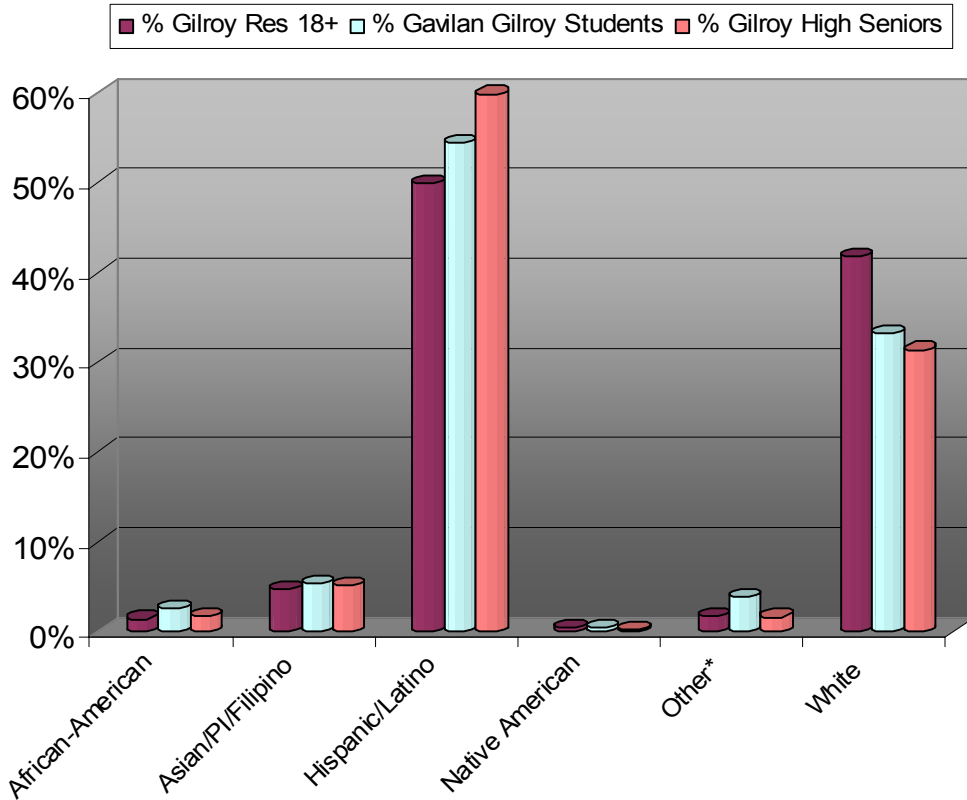
- African-American
- Asian/Pacific Islander
- Hispanic
- Native American
- Other/Unknown
- White, non-Hispanic



Term	African-American		Asian/Pacific Islander		Hispanic/Latino		Native American		White, Non-Hispanic		Other/Unknown		Total
	Count	%	Count	%	Count	%	Count	%	Count	%	Count	%	
Fall 2005	118	2%	274	5%	2403	47%	36	.7%	2013	40%	258	5%	5102
Fall 2004	112	2%	256	5%	2232	47%	39	1%	1902	40%	203	4%	4744
Fall 2003	107	2%	242	5%	2192	47%	39	1%	1867	40%	244	5%	4691
Fall 2002	98	2%	262	5%	2388	46%	38	1%	2123	41%	282	5%	5191
Fall 2001	80	2%	228	5%	2126	45%	41	1%	1991	42%	273	6%	4739
Fall 2000	77	2%	200	5%	2002	45%	31	1%	1865	42%	226	5%	4401
Fall 1999	73	2%	170	4%	1901	44%	30	1%	1948	45%	234	5%	4356

Data for non-JPA students only

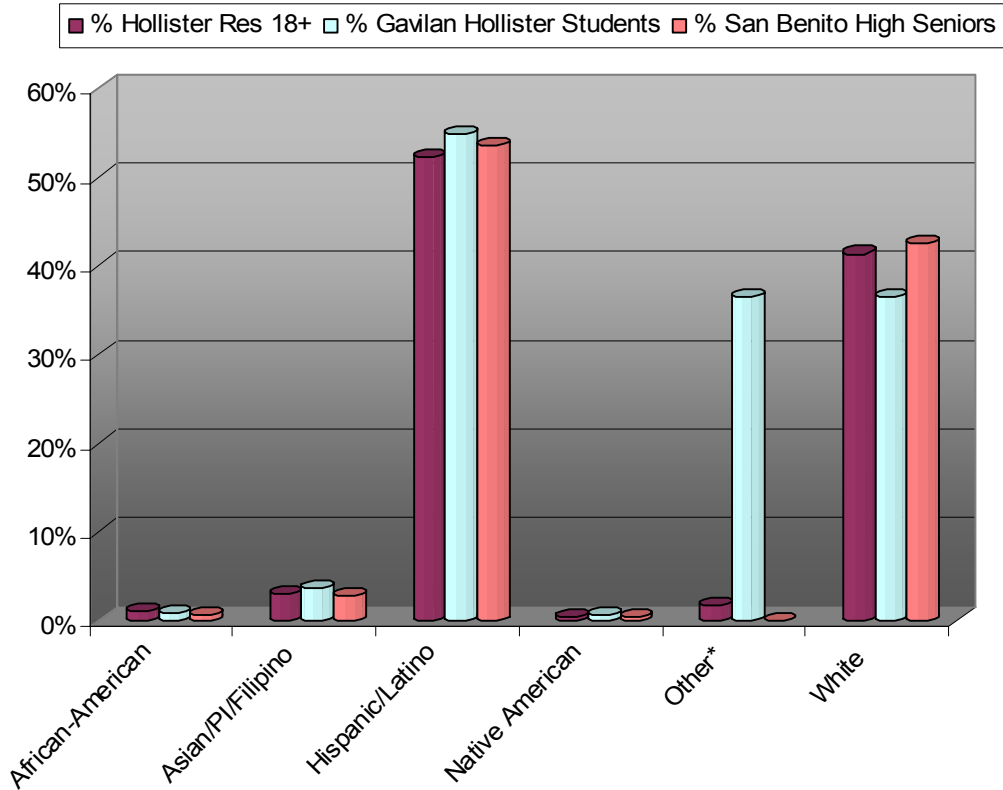
Ethnicities for 2004-2005 Residency and Student Status



Ethnicity	Gilroy residents aged 18 and over		Gavilan Students from Gilroy		Gilroy High Seniors	
	Count	Percentage	Count	Percentage	Count	Percentage
African-American	460	1.44%	106	2.64%	10	1.82%
Asian/Pacific Islander/Filipino	1,513	4.73%	216	5.39%	28	5.11%
Hispanic/Latino	15,971	49.88%	2,183	54.47%	328	59.85%
Native American	158	0.49%	17	0.42%	1	0.18%
Other*	543	1.70%	157	3.92%	9	1.64%
White	13,376	41.77%	1,329	33.16%	172	31.39%
Total	32,021	100%	4,008	100%	548	100%

* Other includes Unknown for Gavilan students; 2005 city population is based on current population estimates and 2000 census proportions within city, by ethnicity.

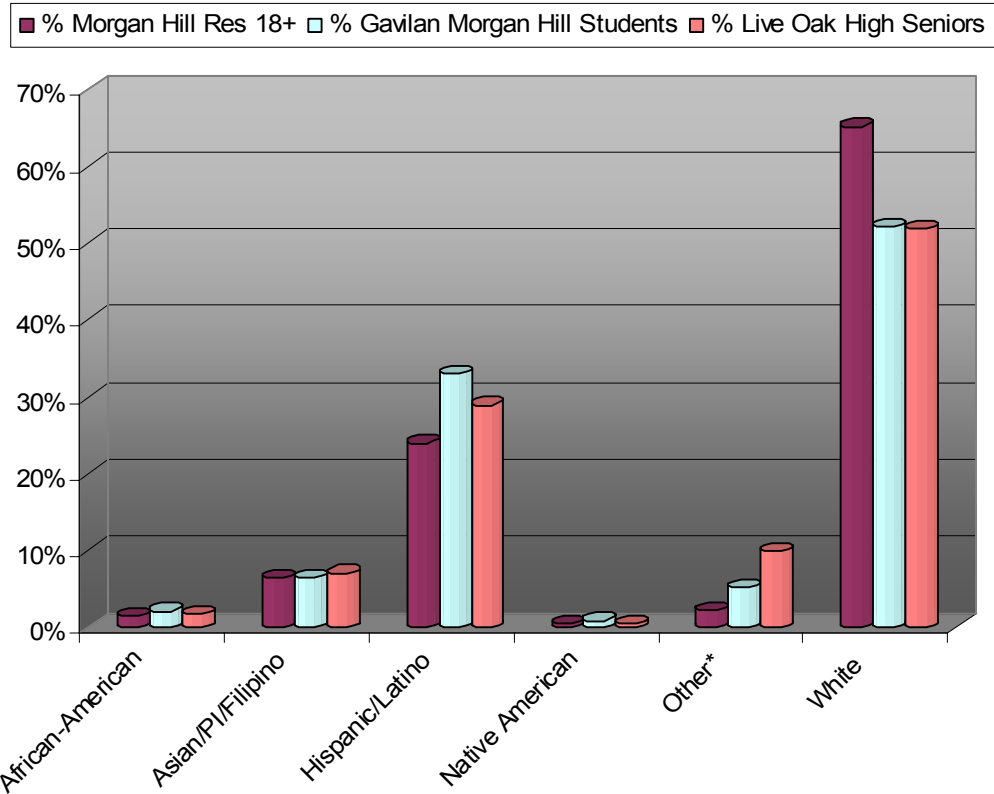
Ethnicities for 2004-05 Residency and Student Status



Ethnicity	Hollister Residents 18+		Gavilan Hollister Students		San Benito High Seniors	
	Count	Percentage	Count	Percentage	Count	Percentage
African-American	283	1.17%	29	0.94%	4	0.63%
Asian/Pacific Islander/Filipino	729	3.01%	116	3.74%	18	2.86%
Hispanic/Latino	12,631	52.19%	1,698	54.81%	337	53.49%
Native American	126	0.52%	21	0.68%	3	0.48%
Other*	433	1.79%	106	36.41%	0	0.00%
White	10,001	41.32%	1,128	36.41%	268	42.54%
Total	24,203	100%	3,098	100%	630	100%

* Other includes Unknown for Gavilan students; 2005 city population is based on current population estimates and 2000 census proportions within city, by ethnicity.

Ethnicities for 2004-05 Residency and Student Status

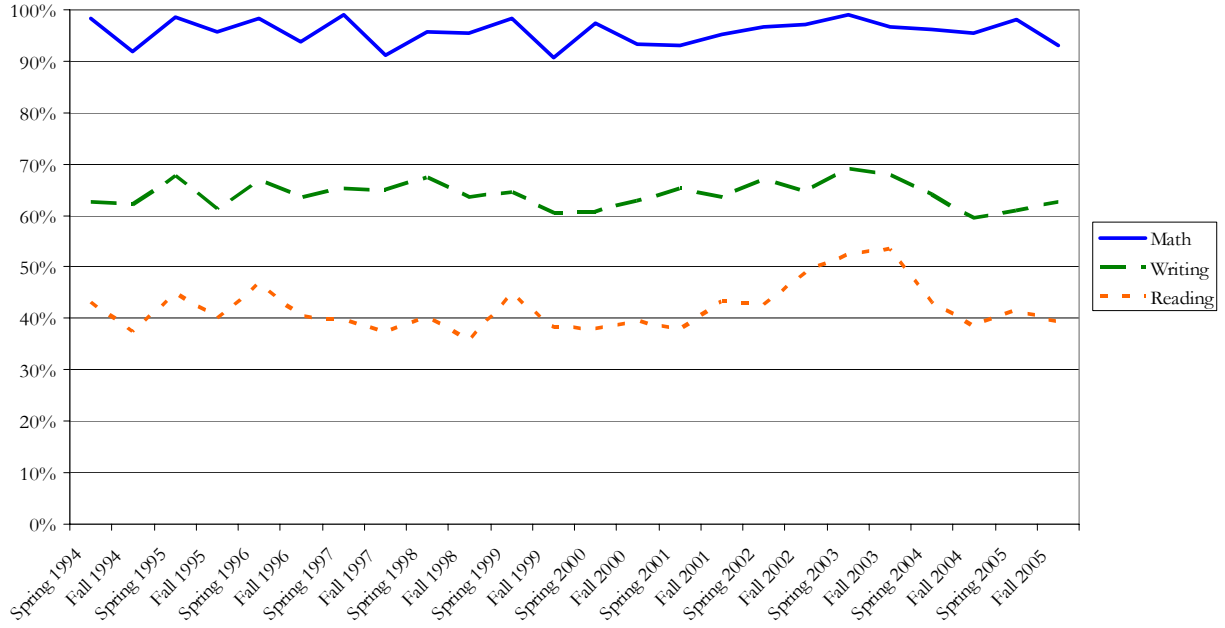


Ethnicity	Morgan Hill Residents 18+		Gavilan Morgan Hill Students		Live Oak High Seniors	
	Count	Percentage	Count	Percentage	Count	Percentage
African-American	397	1.58%	42	2.13%	10	1.76%
Asian/Pacific Islander/Filipino	1,646	6.53%	129	6.53%	40	7.05%
Hispanic/Latino	6,047	23.99%	653	33.08%	164	28.92%
Native American	126	0.50%	18	0.91%	3	0.53%
Other*	561	2.23%	104	5.27%	56	9.88%
White	16,424	65.17%	1,028	52.08%	294	51.85%
Total	25,202	100%	1,974	100%	567	100%

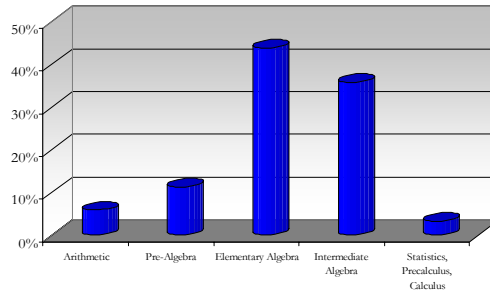
* Other includes Unknown for Gavilan students; 2005 city population is based on current population estimates and 2000 census proportions within city, by ethnicity.

Incoming Student Preparation

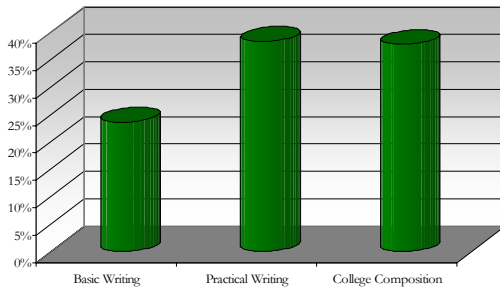
New Students Needing Pre-College Remediation



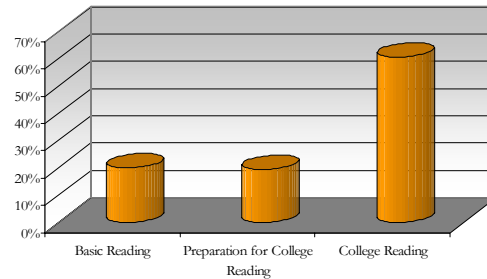
Math Placement Proportions at Gavilan College
2005



English Placement Proportions at Gavilan College
2005



Reading Placement Proportions at Gavilan College
2005



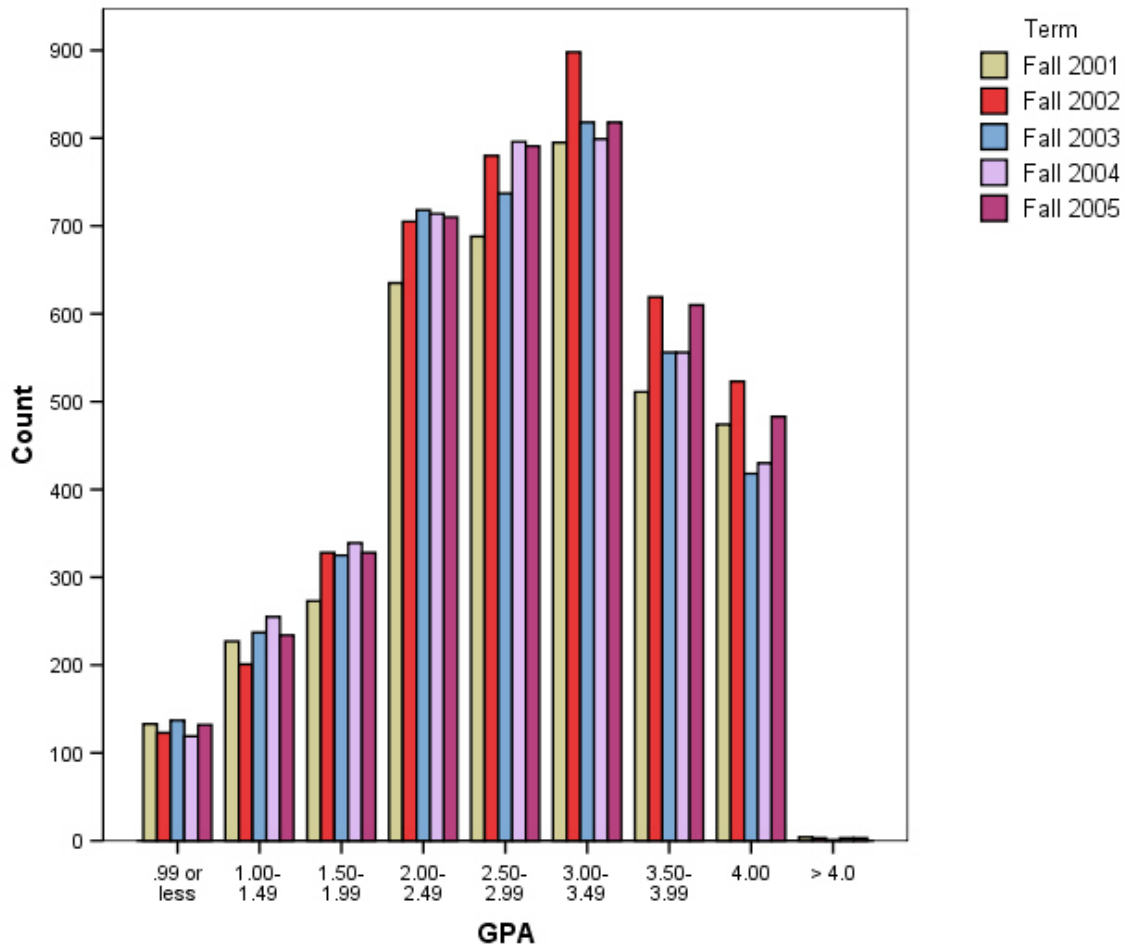
Student Academic Characteristics

Credit Load	Fall 1999	Fall 2000	Fall 2001	Fall 2002	Fall 2003	Fall 2004	Fall 2005
0-3	28%	31%	30%	29%	25%	26%	27%
3.01-6	17%	16%	17%	17%	15%	16%	16%
6.01-9	16%	15%	14%	14%	15%	16%	16%
9.01-11.99	8%	7%	7%	8%	9%	8%	10%
12+	31%	31%	32%	32%	35%	35%	33%

Data for non-JPA students taking credit units only

	Fall 1999		Fall 2000		Fall 2001		Fall 2002		Fall 2003		Fall 2004		Fall 2005	
	Mean Credit Load	% of head count	Mean Credit Load	% of head count	Mean Credit Load	% of head count	Mean Credit Load	% of head count	Mean Credit Load	% of head count	Mean Credit Load	% of head count	Mean Credit Load	% of head count
Day or Evening	9.5	73%	9.6	70%	9.6	69%	9.8	69%	9.8	76%	9.8	75%	9.7	76%
Evening Only	3.8	27%	3.8	30%	3.8	31%	3.8	31%	4.1	24%	4.0	25%	3.8	24%

Data for non-JPA students. Credit load for credit units only. Time of enrollment includes non-credit.

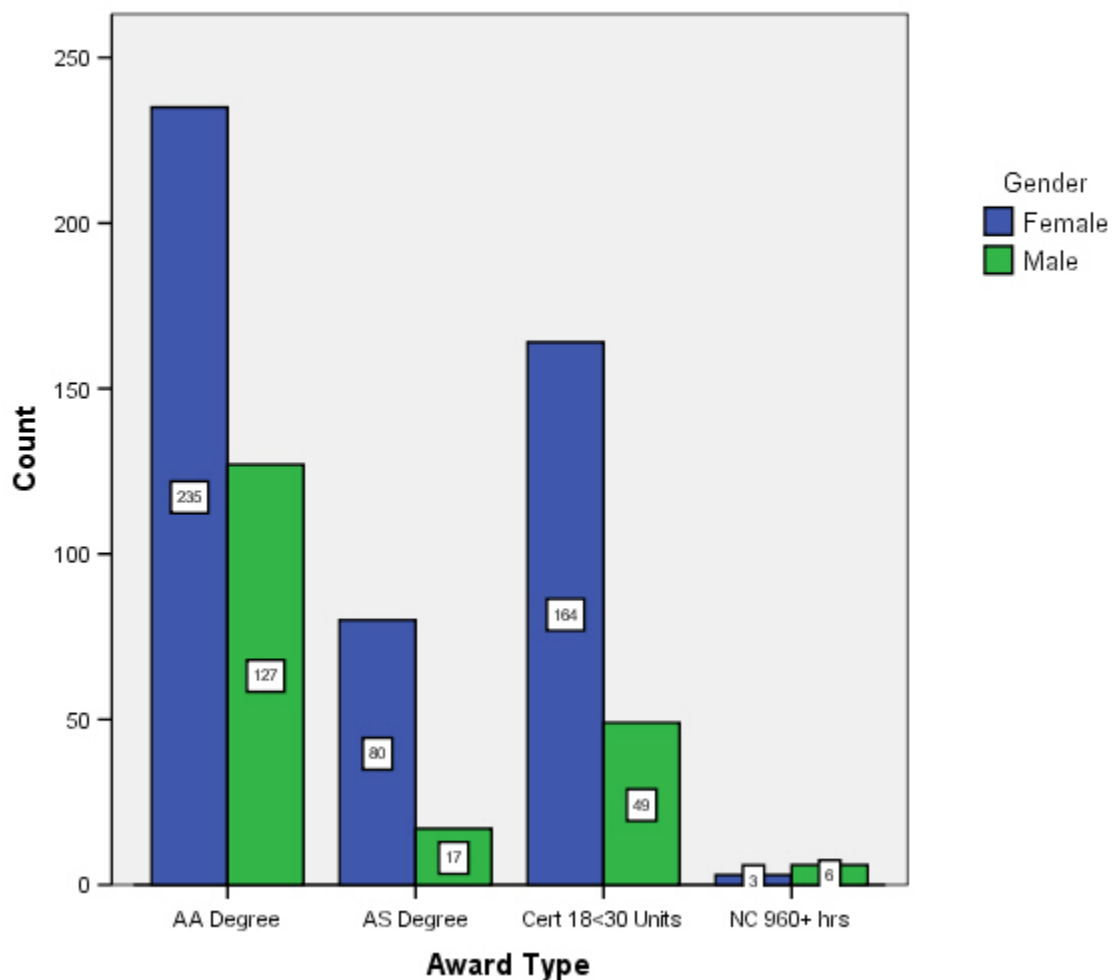


GPA distributions for non-JPA students

Cumulative Units Completed	Fall 1999	Fall 2000	Fall 2001	Fall 2002	Fall 2003	Fall 2004	Fall 2005
0 to <12	55%	55%	56%	54%	49%	50%	51%
12 to <30	22%	22%	22%	23%	23%	22%	22%
30 to <45	9%	10%	9%	10%	11%	11%	10%
45 to <60	6%	6%	6%	6%	7%	7%	7%
60+	8%	8%	8%	8%	10%	10%	9%

Award	94-95	95-96	96-97	97-98	98-99	99-00	00-01	01-02	02-03	03-04	04-05
AA	144	139	175	167	162	161	150	179	151	179	183
AS	49	49	45	29	27	23	33	23	29	43	54
Certificate	114	120	103	86	98	82	95	73	92	115	97
Total	307	308	323	282	287	266	278	275	272	337	334

Total Number of Awards for Male and Female Students, 2004-05



Awards by Program, 2004-05	AA Degree	AS Degree	Certificate	Total
Accounting	7		13	20
Administration of Justice	35		8	43
Aeronautical and Aviation Technology		1	27	28
Art Painting, Drawing, and Sculpture	7			7
Biology, General		2		2
Business and Commerce, General	37			37
Child Development	5		20	25
Child Development/Early Care and Education	11		16	27
Computer Networking		1	2	3
Computer Programming		4	3	7
Cosmetology and Barbering			30	30
Drafting Technology		5	6	11
Dramatic Arts	3			3
Film Production	2			2
Health Professions, Transfer Core Curriculum		16		16
Humanities	1			1
Humanities and Social Sciences	3			3
Information Technology, General	1		3	4
Liberal Arts and Sciences, General	115			115
Licensed Vocational Nursing		19	21	40
Mathematics, General		2		2
Music	1			1
Nursing, LVN		10	21	31
Nursing, RN		14	16	30
Office Technology/Computer Applications	2		7	9
Other Information Technology		4	2	6
Radio, Motion Picture, Television	1			1
Registered Nursing		18	15	33
Social Sciences, General	11		1	12
Software Applications	2	1	2	5
Spanish	1			1
Speech Communication	3			3
Technical Theater	1			1
Transfer Studies	113			113
Total	362	97	213	671

Academic Year	Gavilan UC and CSU Transfers
95-96	218
96-97	209
97-98	200
98-99	204
99-00	162
00-01	176
01-02	202
02-03	191
03-04	179
04-05	185

2004-05 Success Rates for Basic Skills Courses

Course	African-American		Asian		Hispanic		Native American		White, non-Hispanic		Unknown	
	% success	enrolled	% success	enrolled	% success	enrolled	% success	enrolled	% success	enrolled	% success	enrolled
English 1A	59%	49	70%	95	55%	533	46%	11	64%	590	61%	64
English 420	55%	11	76%	21	45%	295	50%	2	59%	68	44%	9
English 440	44%	9	74%	23	51%	305	0%	1	59%	83	57%	7
ESL 520 level	n/a	0	64%	25	68%	257	n/a	0	0%	3	0%	2
Math 233	37%	27	62%	47	45%	452	57%	7	48%	361	60%	40
Math 400	40%	5	83%	6	39%	160	100%	1	51%	41	40%	5

Course	Female		Male		Unknown	
	% success	enrolled	% success	enrolled	% success	enrolled
English 1A	62%	764	58%	578	n/a	n/a
English 420	55%	221	41%	185	n/a	n/a
English 440	60%	237	46%	191	n/a	n/a
ESL 520 level	69%	207	61%	80	n/a	n/a
Math 233	50%	527	45%	406	0%	1
Math 400	45%	142	39%	76	n/a	n/a

Course	No Verified Disability		Learning Disabled		Other Disability	
	% success	enrolled	% success	enrolled	% success	enrolled
English 1A	60%	1299	70%	27	62%	16
English 420	68%	248	61%	41	23%	17
English 440	53%	373	67%	40	33%	15
ESL 520 level	66%	286	n/a	n/a	100%	1
Math 233	48%	872	43%	47	60%	15
Math 400	46%	181	43%	23	7%	14

Environmental Scan

Per Capita Income

Year	San Benito County	Santa Clara County
2004	\$30,442	\$49,132
2003	\$29,091	\$46,363
2002	\$28,660	\$46,499
2001	\$29,197	\$49,624
2000	\$24,883	\$55,157
1999	\$22,857	\$45,928
1998	\$21,572	\$40,185

Labor Force and Unemployment

Year	San Benito County		Santa Clara County	
	Labor force	Unemployment rate	Labor force	Unemployment rate
2006	24,500	6.9	808,200	4.4
2005	25,000	7.9	823,700	5.5
2004	25,300	9.6	829,000	6.6
2003	25,700	10.0	851,400	8.5
2002	26,300	8.9	891,500	8.5
2001	27,400	6.3	939,700	5.1
2000	27,400	6.0	939,700	3.1
1999	26,200	8.1	958,600	3.1
1998	26,200	10.6	953,200	3.2
1997	26,100	11.2	929,900	3.1
1996	24,800	11.9	892,400	3.7
1995	22,900	13.6	860,700	4.9
1994	22,300	14.0	852,300	6.3
1993	22,300	16.1	847,400	7.0
1992	21,900	17.4	846,800	6.9
1991	21,200	16.2	841,000	5.7
1990	21,000	12.2	852,800	4.0

Median Home Prices

Region	2003	2004	2005
San Benito County	\$385,000	\$480,000	\$593,000
Hollister	\$380,000	\$476,000	\$589,000
San Juan Bautista	\$546,250	\$750,000	\$895,000
Santa Clara County	\$470,000	\$520,000	\$645,000
Morgan Hill	\$535,000	\$614,000	\$725,000
Gilroy	\$466,500	\$590,000	\$675,000
San Martin	\$670,000	\$750,000	\$890,000

Gilroy Community Survey (2005)

The City of Gilroy conducted a community survey and public hearings to assess community needs to support their Consolidated Housing Plan. While housing and infrastructure formed the bulk of the survey, some questions related to training and education.

Below are relevant selected findings:

Community Facilities

Survey participants were asked a series of questions about community facilities that they consider to be important. When asked to name which two community facilities and services were most important, services most frequently mentioned were: senior services (17.7 percent), health services (17.3 percent), homeless services (15.3 percent), child care services (15.2 percent), and services for at-risk youth (12.1 percent). (page 22)

Business Assistance and Job Programs

Survey participants named four types of business assistance programs as most important. These were job or skills training (32.6 percent), small business assistance loans (22.1 percent), earthquake safety improvements (20.6 percent), and rehabilitation assistance for older commercial and industrial properties (15.5 percent). (page 22)

Affordable Housing Programs

Of the various types of affordable housing programs that survey participants were asked to rank, three in particular were ranked as most important: rental assistance for low-income households (21.7 percent), construction of affordable housing (20 percent), and homebuyer assistance (18.6 percent). Other highly ranked affordable housing programs, at 10.2 percent each, were home improvement assistance for disabled access and housing rehabilitation assistance for lower income households. (page 22)

Employment & Vocational Skills Training Public Hearing comments:

Current services are adequate – yes (0) no (5)

What needs to be done?

- Get Gavilan College to offer TRADES courses! Not everyone needs to go to a J.C. to transfer to a 4 year university to become a rocket scientist
- Offer more variety through ROP!
- Gavilan College Programs/Coordination w/SJSU-PD & UC Berkeley PD (page 50)

“Gavilan College should be convinced to continue offering community education that encourages vocation skills for students who are not looking to go to a four year school, particularly for those students who do not usually do well in an academic setting. There is a push now at the state level for community colleges to become mainly transfer schools to four year higher education. Wisconsin Technical Colleges are a good example of education for a trade.” (page 54)

Silicon Valley Index 2006

Facts at a Glance

- The population grew by 1%, the largest increase since 2000. Immigration increased and migration dropped by 59%.
- Foreign born residents make up 38% of the population.
- Median household income has not experienced significant growth for almost 10 years, although per capita income and average pay have increased by 2.7%.
- Employment rates increased for the first time in four years with more than 2000 jobs gained in 2005.
- The greatest increase in jobs has taken place in the creative and innovative services cluster, which includes research and development, scientific consulting, engineering services, and industrial design.
- More housing units were approved in 2005 than in any year since 1999, although the number of affordable housing units developed in 2005 was the lowest since 1998.
- However, bankruptcy filings have increased 50% since 2001.
- The percentage of individuals covered by employment-based health insurance has decreased by 7.5%, which the percentage of uninsured workers has risen by 1.6%.
- Bachelor's degrees are held by 41% of Silicon Valley population.
- High school diplomas are held by 82% of the population.
- There was an 18% increase in students taking required courses for entrance into UC and CSU colleges.
- There are six times as many applicants for community college nursing training programs as there are spaces available.
- The high school graduation rate fell to 74% in 2004/2005.
- Enrollment in high school intermediate algebra was 33% overall and 23% for Hispanic youth.
- Only 17% of all 3rd grade English learners scored at or above the national median in reading.

References

California Community Colleges Chancellor's Office
<http://www.cccco.edu/>

California Department of Finance
<http://www.dof.ca.gov>

California Postsecondary Education Commission
<http://www.cpec.ca.gov/>

California State Association of Counties
<http://www.csac.counties.org/>

Census Bureau
<http://www.census.gov>

DataQuick Real Estate News
<http://www.dqnews.com>

Employment Development Division
<http://www.labormarketinfo.edd.ca.gov>

City of Gilroy
<http://www.ci.gilroy.ca.us/>

Santa Clara County
<http://www.sccgov.org/>

Silicon Valley Index
<http://www.jointventure.org/>

U.S. Bureau of Labor Statistics
<http://www.bls.gov>