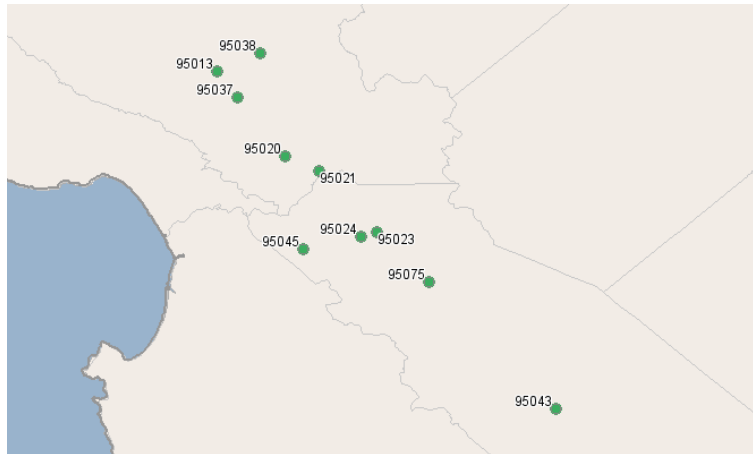


# Gavilan College

5055 Santa Teresa Blvd.  
Gilroy, California 95020  
408.847.2514

## Occupation Overview Report



## Region Info

Region: Gavilan C. Primary Service Area

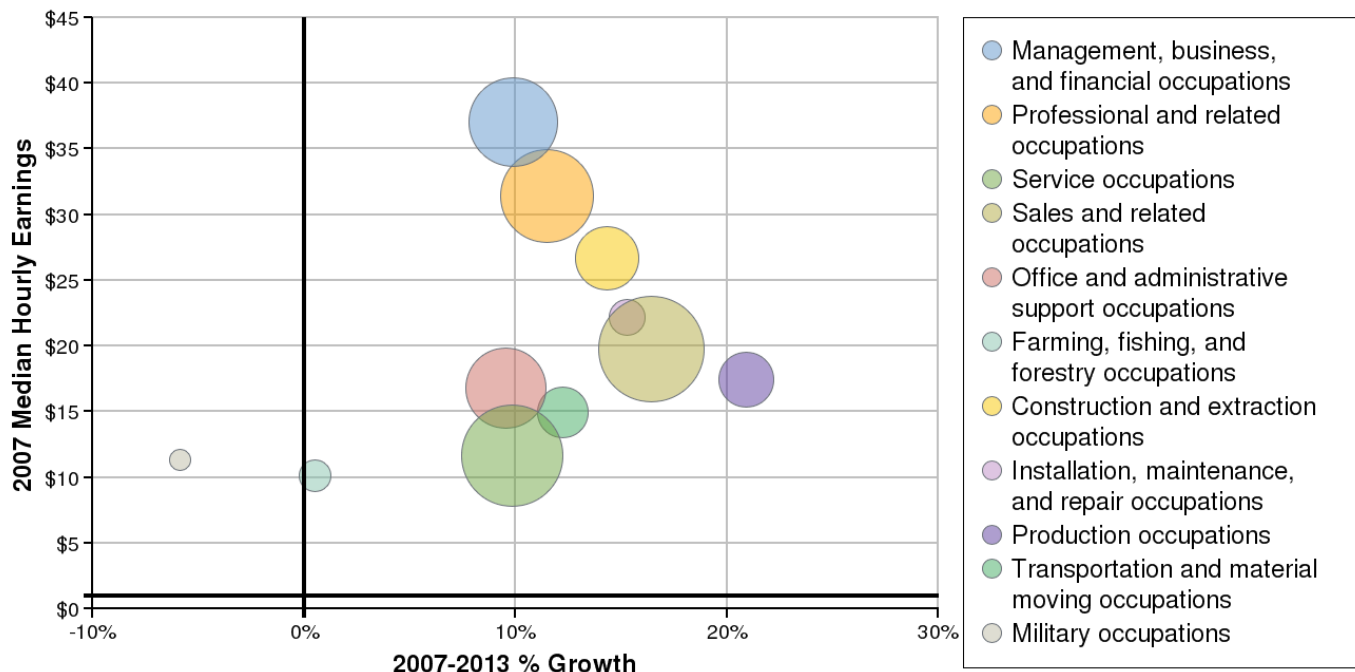
Description: Service are including SBC, Morgan Hill, Gilroy, Coyote, PO box codes included

Counties: San Benito, CA (6069)

ZIP Codes: 95013 (in Santa Clara county, CA), 95020 (in Santa Clara county, CA), 95021 (in Santa Clara county, CA), 95037 (in Santa Clara county, CA), 95038 (in Santa Clara county, CA)

## Occupation Size and Growth

### 2007 - 2013 Size and Growth

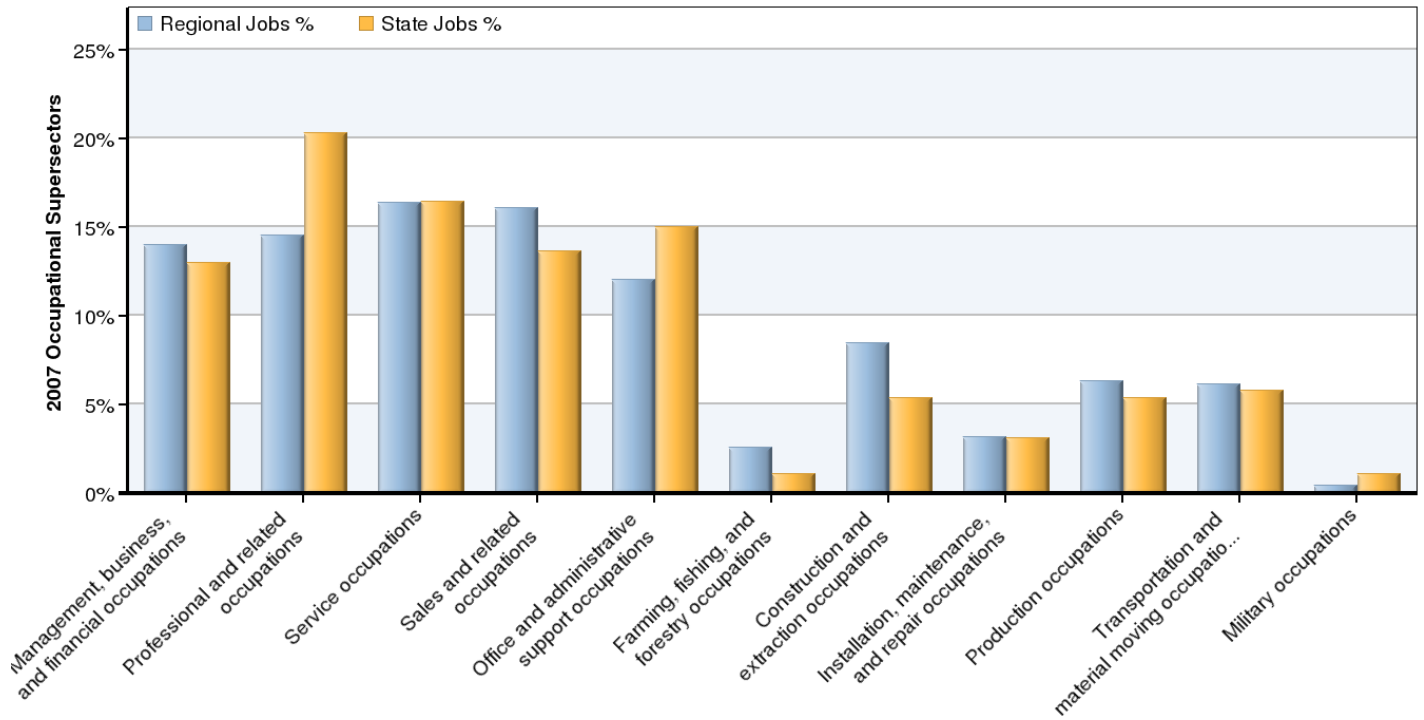


\*Bubble size represents 2007 jobs in each supersector.

| Description                                       | 2007 Jobs     | 2013 Jobs     | Growth       | % Growth   | 2007 Median Hourly Earnings |
|---|---------------|---------------|--------------|------------|-----------------------------|
| Management, business, and financial occupations   | 9,854         | 10,829        | 976          | 10%        | \$37.06                     |
| Professional and related occupations              | 10,215        | 11,390        | 1,175        | 12%        | \$31.41                     |
| Service occupations                               | 11,537        | 12,671        | 1,135        | 10%        | \$11.63                     |
| Sales and related occupations                     | 11,327        | 13,190        | 1,863        | 16%        | \$19.79                     |
| Office and administrative support occupations     | 8,466         | 9,276         | 810          | 10%        | \$16.83                     |
| Farming, fishing, and forestry occupations        | 1,809         | 1,819         | 10           | 1%         | \$10.15                     |
| Construction and extraction occupations           | 5,941         | 6,793         | 852          | 14%        | \$26.71                     |
| Installation, maintenance, and repair occupations | 2,232         | 2,572         | 341          | 15%        | \$22.16                     |
| Production occupations                            | 4,452         | 5,383         | 931          | 21%        | \$17.42                     |
| Transportation and material moving occupations    | 4,325         | 4,854         | 529          | 12%        | \$14.93                     |
| Military occupations                              | 298           | 280           | -18          | -6%        | \$11.37                     |
|   | <b>70,455</b> | <b>79,058</b> | <b>8,604</b> | <b>12%</b> |                             |

Source: EMSI Complete Employment - Spring 2008 Release v. 2

## 2007 Occupational Makeup



| Description                                       | 2007 Regional Jobs | % Regional Jobs | 2007 State Jobs | % State Jobs |
|---|--------------------|-----------------|-----------------|--------------|
| Management, business, and financial occupations   | 9,854              | 14%             | 2,652,435       | 12.9%        |
| Professional and related occupations              | 10,215             | 14.5%           | 4,156,894       | 20.3%        |
| Service occupations                               | 11,537             | 16.4%           | 3,371,413       | 16.5%        |
| Sales and related occupations                     | 11,327             | 16.1%           | 2,789,947       | 13.6%        |
| Office and administrative support occupations     | 8,466              | 12%             | 3,068,827       | 15%          |
| Farming, fishing, and forestry occupations        | 1,809              | 2.6%            | 216,155         | 1.1%         |
| Construction and extraction occupations           | 5,941              | 8.4%            | 1,100,290       | 5.4%         |
| Installation, maintenance, and repair occupations | 2,232              | 3.2%            | 632,506         | 3.1%         |
| Production occupations                            | 4,452              | 6.3%            | 1,091,821       | 5.3%         |
| Transportation and material moving occupations    | 4,325              | 6.1%            | 1,185,359       | 5.8%         |
| Military occupations                              | 298                | 0.4%            | 222,110         | 1.1%         |

Source: EMSI Complete Employment - Spring 2008 Release v. 2

## **Data Sources and Calculations**

### **Occupation Data**

Organizing regional employment information by occupation provides a workforce-oriented view of the regional economy. EMSI's occupation data are based on EMSI's industry data and regional staffing patterns taken from the Occupational Employment Statistics program (U.S. Bureau of Labor Statistics). Wage information is partially derived from the American Community Survey. The occupation-to-program (SOC-to-CIP) crosswalk is based on one from the U.S. Department of Education, with customizations by EMSI.

### **State Data Sources**

This report uses state data from the following agencies: California Labor Market Information Department.