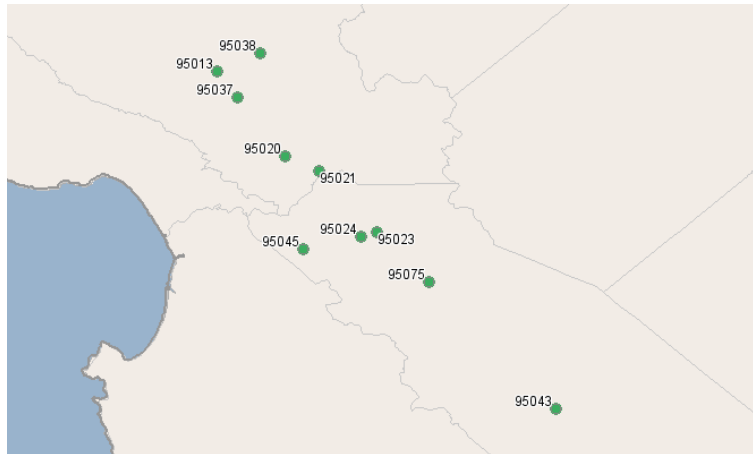


Gavilan College

5055 Santa Teresa Blvd.
Gilroy, California 95020
408.847.2514

Industry Overview Report



Region Info

Region: Gavilan C. Primary Service Area

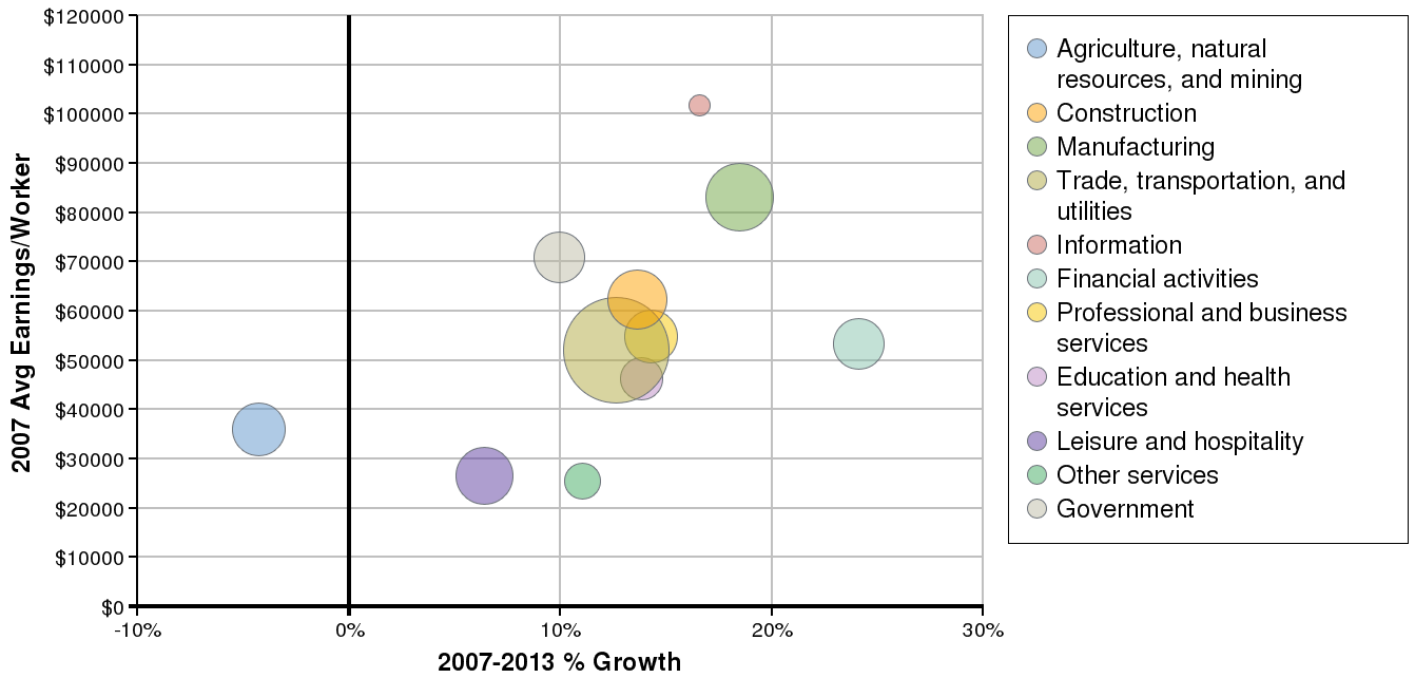
Description: Service are including SBC, Morgan Hill, Gilroy, Coyote, PO box codes included

Counties: San Benito, CA (6069)

ZIP Codes: 95013 (in Santa Clara county, CA), 95020 (in Santa Clara county, CA), 95021 (in Santa Clara county, CA), 95037 (in Santa Clara county, CA), 95038 (in Santa Clara county, CA)

Industry Size and Growth

2007 - 2013 Size and Growth

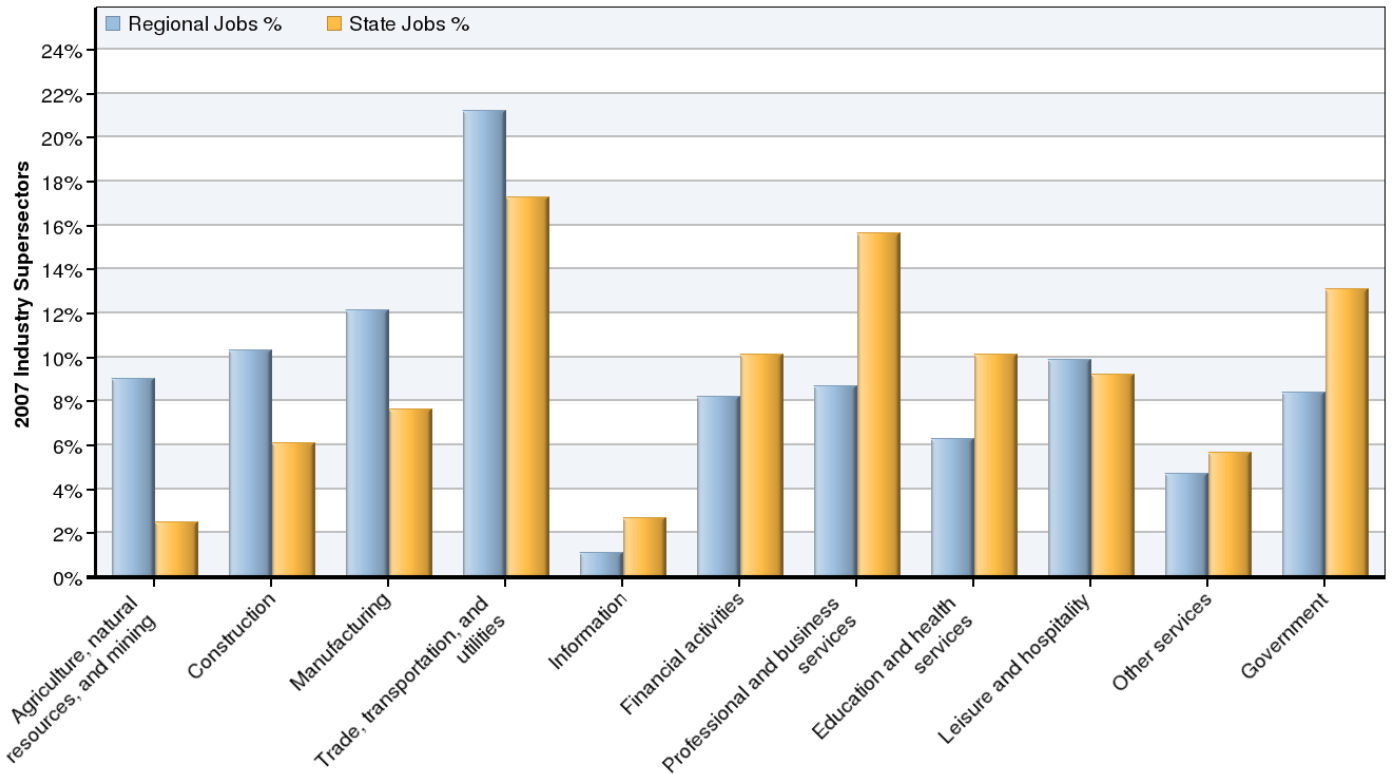


*Bubble size represents 2007 jobs in each supersector.

Description	2007 Jobs	2013 Jobs	Growth	% Growth	2007 EPW
Agriculture, natural resources, and mining	6,348	6,077	-271	-4%	\$36,097
Construction	7,256	8,245	989	14%	\$62,461
Manufacturing	8,558	10,140	1,583	18%	\$83,155
Trade, transportation, and utilities	14,937	16,824	1,886	13%	\$52,130
Information	786	916	130	17%	\$101,770
Financial activities	5,784	7,178	1,394	24%	\$53,403
Professional and business services	6,136	7,011	876	14%	\$54,930
Education and health services	4,442	5,057	615	14%	\$46,358
Leisure and hospitality	6,960	7,406	445	6%	\$26,472
Other services	3,317	3,684	367	11%	\$25,595
Government	5,931	6,520	589	10%	\$70,958
	70,455	79,058	8,604	12%	

Source: EMSI Complete Employment - Spring 2008 Release v. 2

2007 Industrial Makeup



Description	2007 Regional Jobs	% Regional Jobs	2007 State Jobs	% State Jobs
Agriculture, natural resources, and mining	6,348	9%	507,489	2.5%
Construction	7,256	10.3%	1,244,212	6.1%
Manufacturing	8,558	12.1%	1,560,777	7.6%
Trade, transportation, and utilities	14,937	21.2%	3,540,322	17.3%
Information	786	1.1%	555,325	2.7%
Financial activities	5,784	8.2%	2,073,917	10.1%
Professional and business services	6,136	8.7%	3,208,862	15.7%
Education and health services	4,442	6.3%	2,074,300	10.1%
Leisure and hospitality	6,960	9.9%	1,884,962	9.2%
Other services	3,317	4.7%	1,156,214	5.6%
Government	5,931	8.4%	2,681,378	13.1%

Source: EMSI Complete Employment - Spring 2008 Release v. 2

Data Sources and Calculations

Industry Data

In order to capture a complete picture of industry employment, EMSI basically combines covered employment data from Quarterly Census of Employment and Wages (QCEW) produced by the Department of Labor with total employment data in Regional Economic Information System (REIS) published by the Bureau of Economic Analysis (BEA), augmented with County Business Patterns (CBP) and Nonemployer Statistics (NES) published by the U.S. Census Bureau. Projections are based on the latest available EMSI industry data, 15-year past local trends in each industry, growth rates in statewide and (where available) sub-state area industry projections published by individual state agencies, and (in part) growth rates in national projections from the Bureau of Labor Statistics.

State Data Sources

This report uses state data from the following agencies: California Labor Market Information Department.