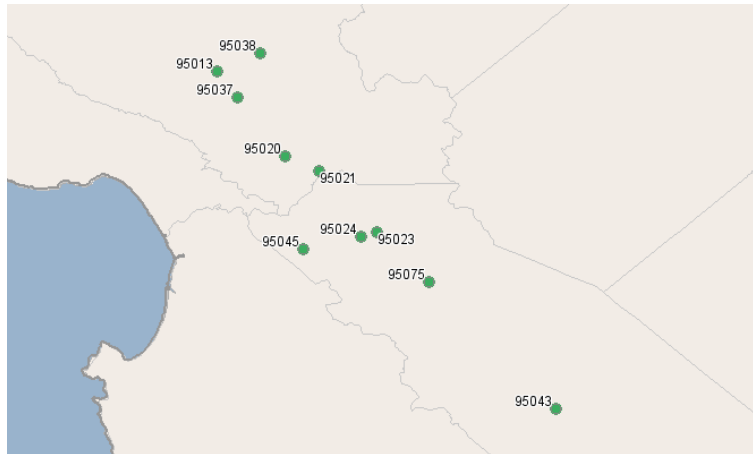


Gavilan College

5055 Santa Teresa Blvd.
Gilroy, California 95020
408.847.2514

Demographic Overview Report



Region Info

Region: Gavilan C. Primary Service Area

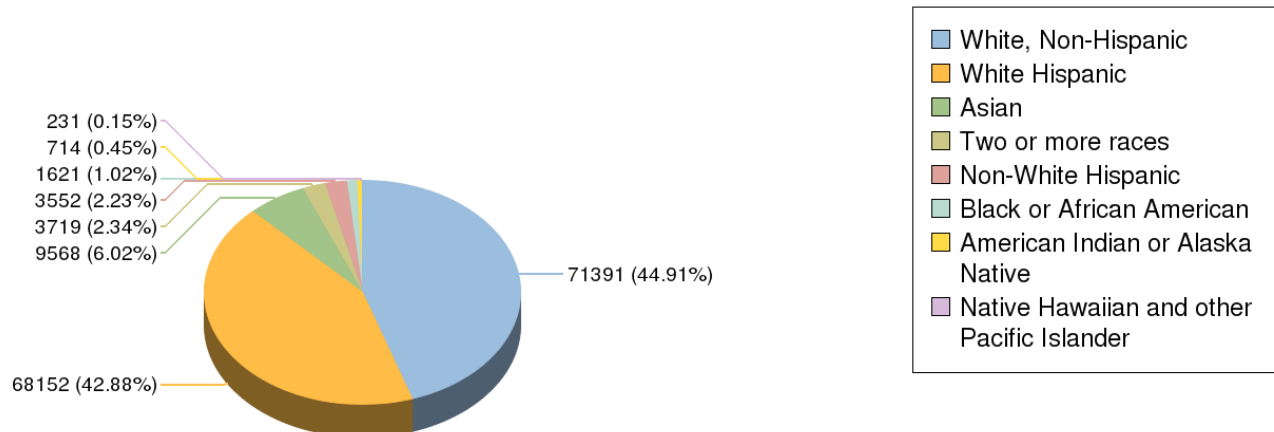
Description: Service are including SBC, Morgan Hill, Gilroy, Coyote, PO box codes included

Counties: San Benito, CA (6069)

ZIP Codes: 95013 (in Santa Clara county, CA), 95020 (in Santa Clara county, CA), 95021 (in Santa Clara county, CA), 95037 (in Santa Clara county, CA), 95038 (in Santa Clara county, CA)

Demographic Overview

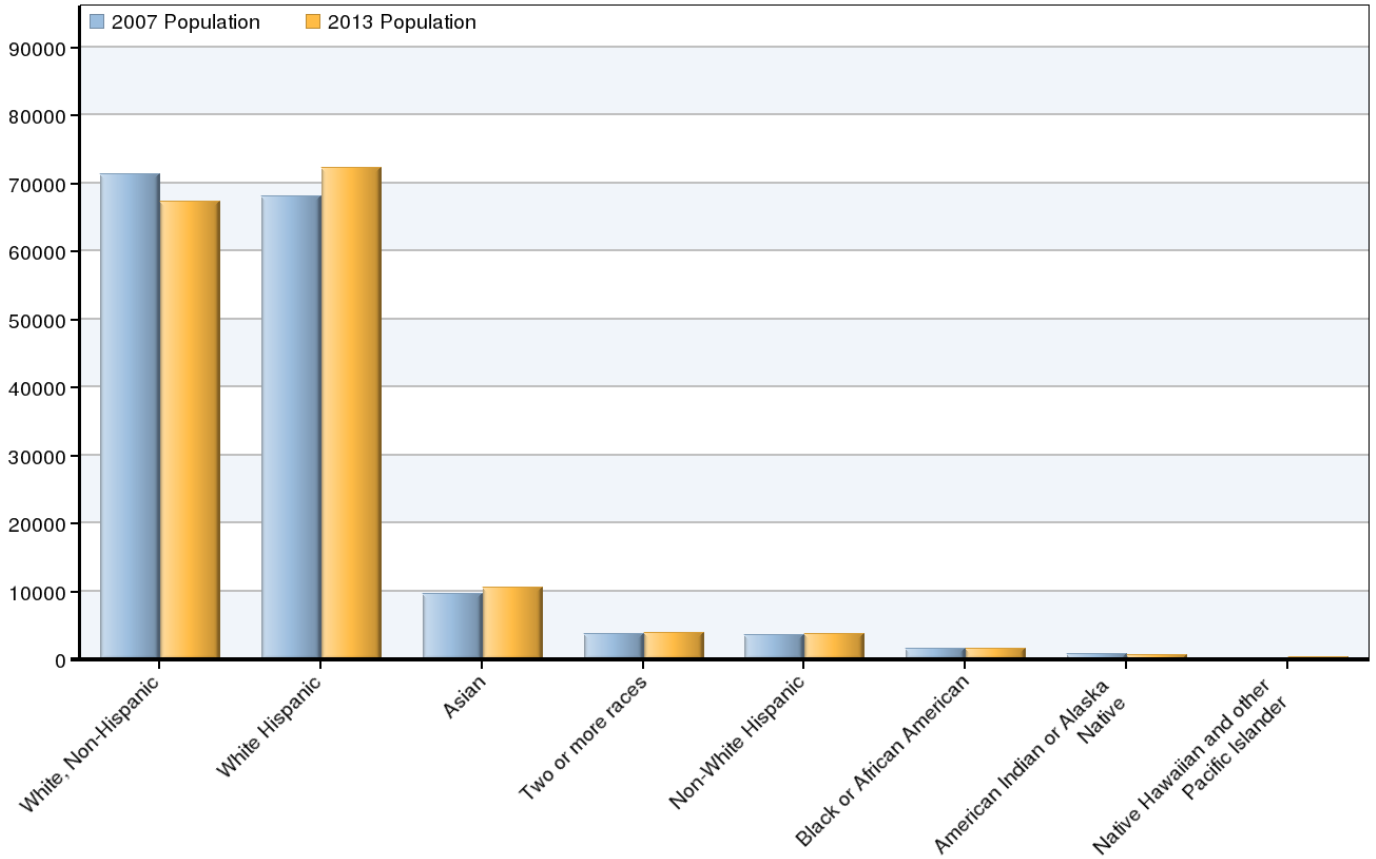
2007 Race/Ethnicity Breakdown



Ethnicity	2007 Population	% of Region
White, Non-Hispanic	71,391	44.91%
White Hispanic	68,152	42.88%
Asian	9,568	6.02%
Two or more races	3,719	2.34%
Non-White Hispanic	3,552	2.23%
Black or African American	1,621	1.02%
American Indian or Alaska Native	714	0.45%
Native Hawaiian and other Pacific Islander	231	0.15%

Source: EMSI Complete Employment - Spring 2008 Release v. 2

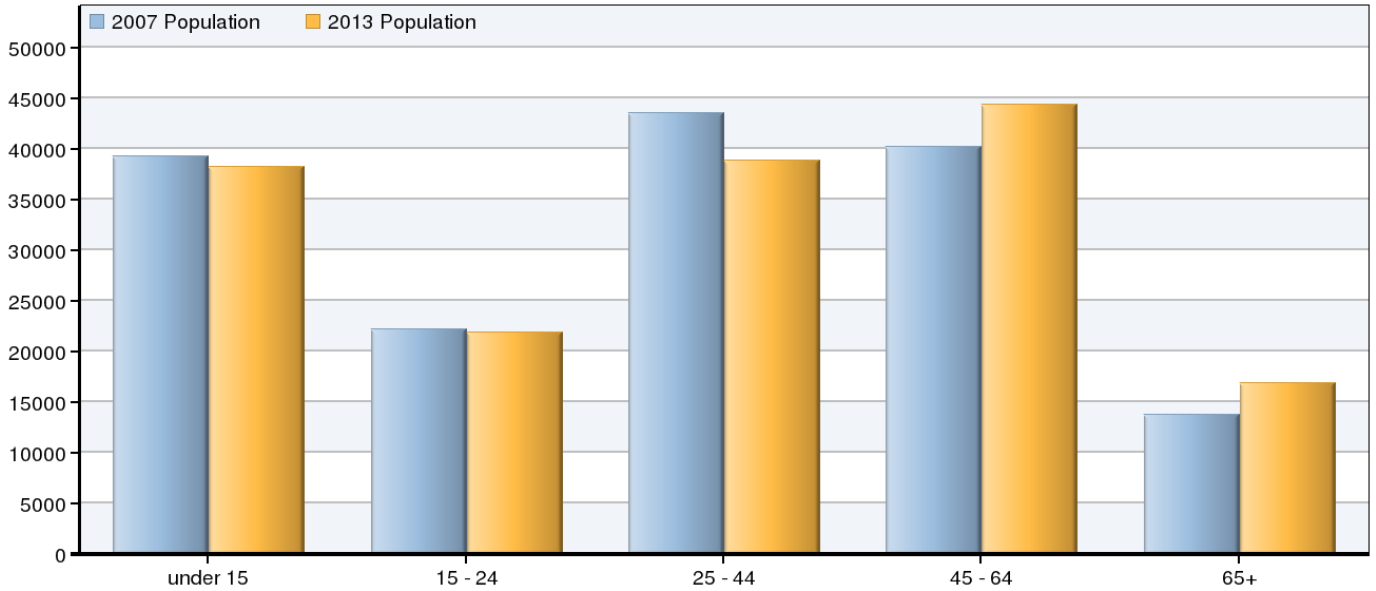
2007 - 2013 Race/Ethnicity Size and Growth



Race/Ethnicity	2007 Population	2013 Population	Change	% Change
White, Non-Hispanic	71,391	67,332	-4,059	-6%
White Hispanic	68,152	72,349	4,197	6%
Asian	9,568	10,596	1,028	11%
Two or more races	3,719	3,854	135	4%
Non-White Hispanic	3,552	3,662	110	3%
Black or African American	1,621	1,576	-45	-3%
American Indian or Alaska Native	714	657	-57	-8%
Native Hawaiian and other Pacific Islander	231	246	15	6%
	158,948	160,272	1,324	1%

Source: EMSI Complete Employment - Spring 2008 Release v. 2

2007 - 2013 Age Size and Growth



Age	2007 Population	2013 Population	Change	% Change
under 15	39,240	38,250	-989	-3%
15 - 24	22,180	21,915	-265	-1%
25 - 44	43,591	38,887	-4,704	-11%
45 - 64	40,165	44,378	4,214	10%
65+	13,774	16,841	3,068	22%
	158,948	160,272	1,323	1%

Source: EMSI Complete Employment - Spring 2008 Release v. 2

Data Sources and Calculations

Demographic Data

The demographic data in this report is compiled from several sources using a specialized process. Sources include US Census Bureau annual estimates, birth and mortality rates from the US Health Department, and projected regional job growth.

State Data Sources

This report uses state data from the following agencies: California Labor Market Information Department.