

## Proportion of Local High School Students Requiring Pre-College Remediation in Math, Writing, or Reading, 2000-2006

New students without a college degree who either take more than 12 units or want to take a Math or English class must participate in Gavilan’s course placement system. On average, 12% of Gavilan students have a college degree and are therefore exempt from this process. The placement system employs a combination of objective tests and other measures to determine the class most appropriate to the student’s skill level. This report considers placement for native English speakers only and does not include English as a Second Language (ESL) placements. ESL students comprise approximately 8% of enrollments.

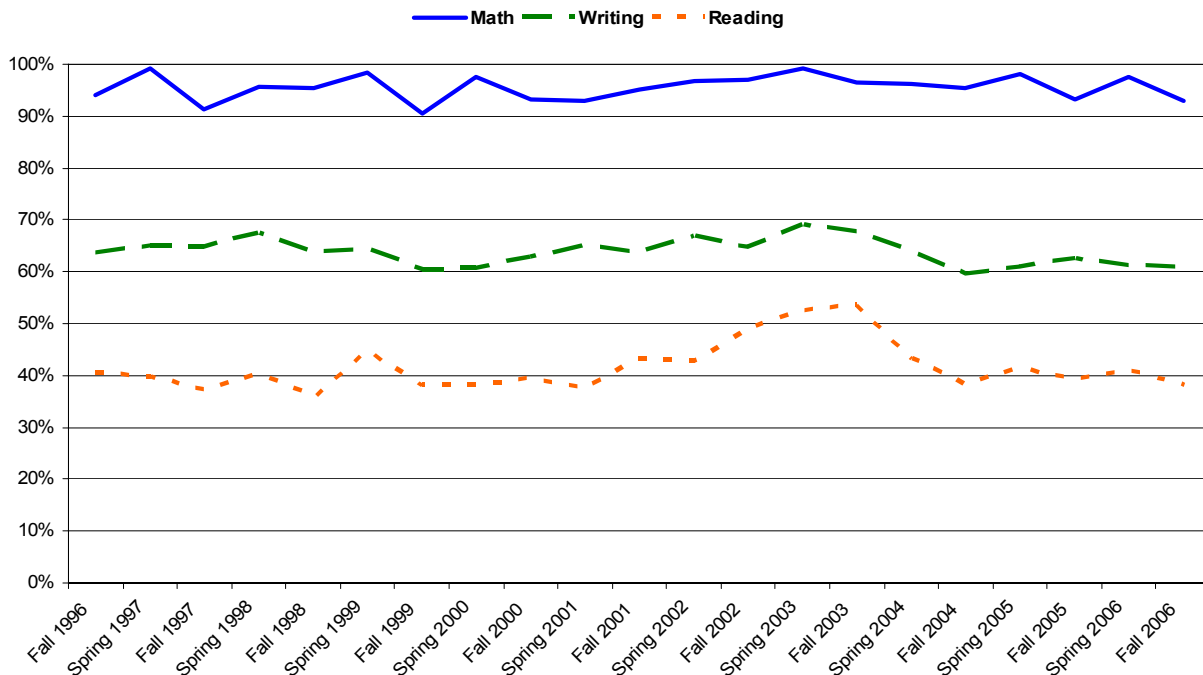
### Placement Data for All New Students

**Math.** Historically, most new students have required pre-college remediation in Math. The percentage of students requiring Math remediation has fluctuated between 91% and 99% with no clear trend over the last decade.

**Writing.** Approximately two-thirds of Gavilan's new students require pre-college remediation in Writing. This proportion has ranged from 59% to 69%, with no clear trend over the last decade.

**Reading.** Over the last decade, an average of 42% of new students has required pre-college remediation in Reading. Reading placement has shown the most variability with a minimum of 36% to a maximum of 54% of students requiring remediation.

**New Students Requiring Pre-College Remediation**



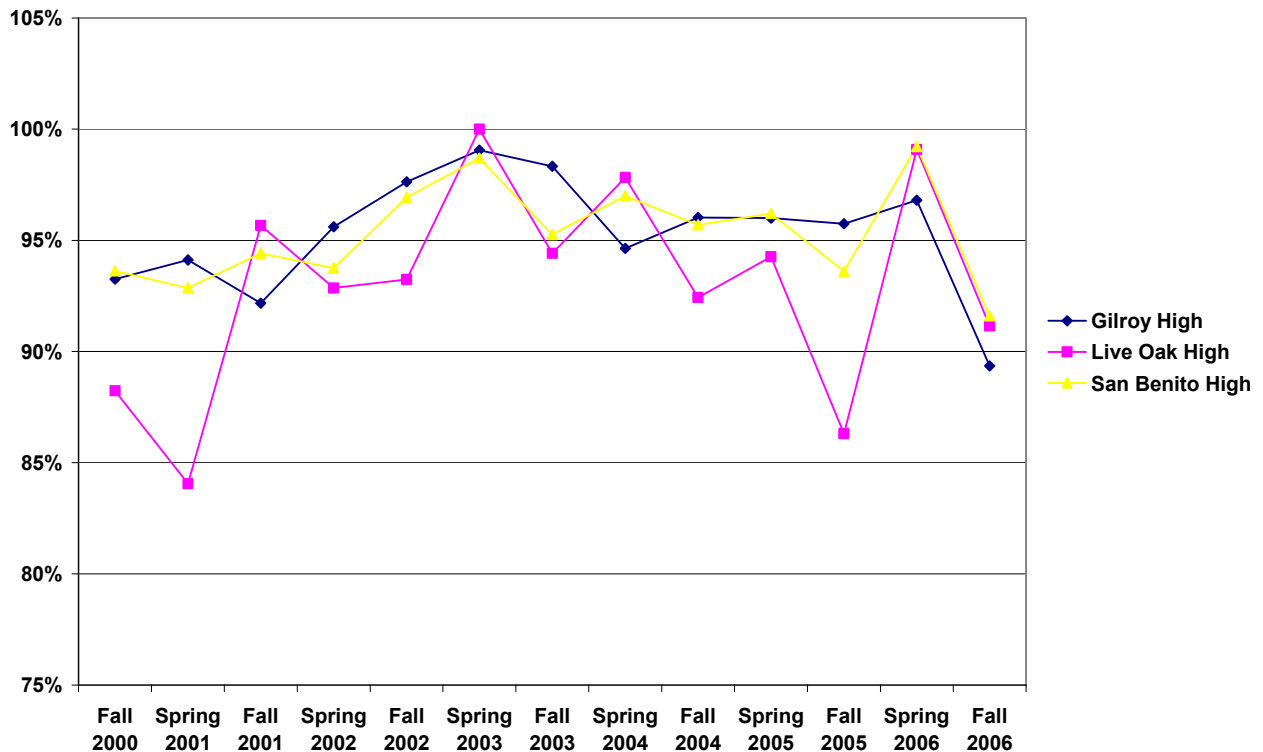
## Pre-College Remediation for Local High School Students

The following graphs report the percentage of new students from Gilroy, Live Oak, and San Benito High Schools requiring pre-college remediation in Math, Writing, and Reading. Data are reported for the last six years. To compare local high school percentages with all new Gavilan students, minimum and maximum values for each remedial area are provided for Fall 2000 to Fall 2006.

**Math.** Live Oak students have shown the greatest variability in remedial Math placement over time, with both the lowest and the highest percentages of required remediation of all new students. Gilroy and San Benito High School students closely match the rates of the general population of new students requiring remediation.

Fall 2000 to Fall 2006					
Course	Min/Max	Gilroy High	Live Oak High	San Benito High	All Students
Math	Minimum	89%	84%	92%	93%
	Maximum	99%	100%	99%	99%

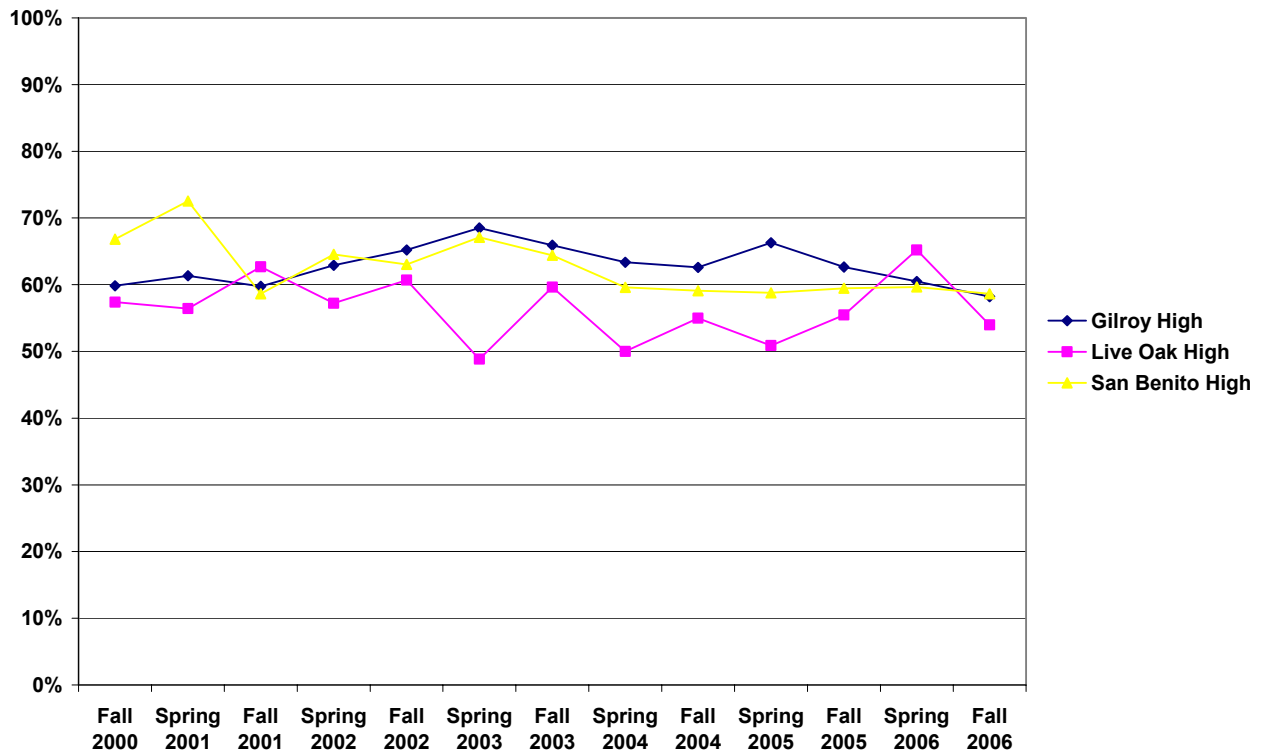
Percentage of Local High School Students Requiring Remedial Math



**Writing.** Live Oak High shows more variability in the percentage of students requiring remediation in writing than other high schools in the area. Live Oak students appear to require somewhat less remediation in writing than most students. San Benito High has also shown a trend toward improvement in writing with lower percentages of required remediation in recent years.

Fall 2000 to Fall 2006					
Course	Min/Max	Gilroy High	Live Oak High	San Benito High	All Students
Writing	Minimum	58%	49%	59%	59%
	Maximum	69%	65%	73%	69%

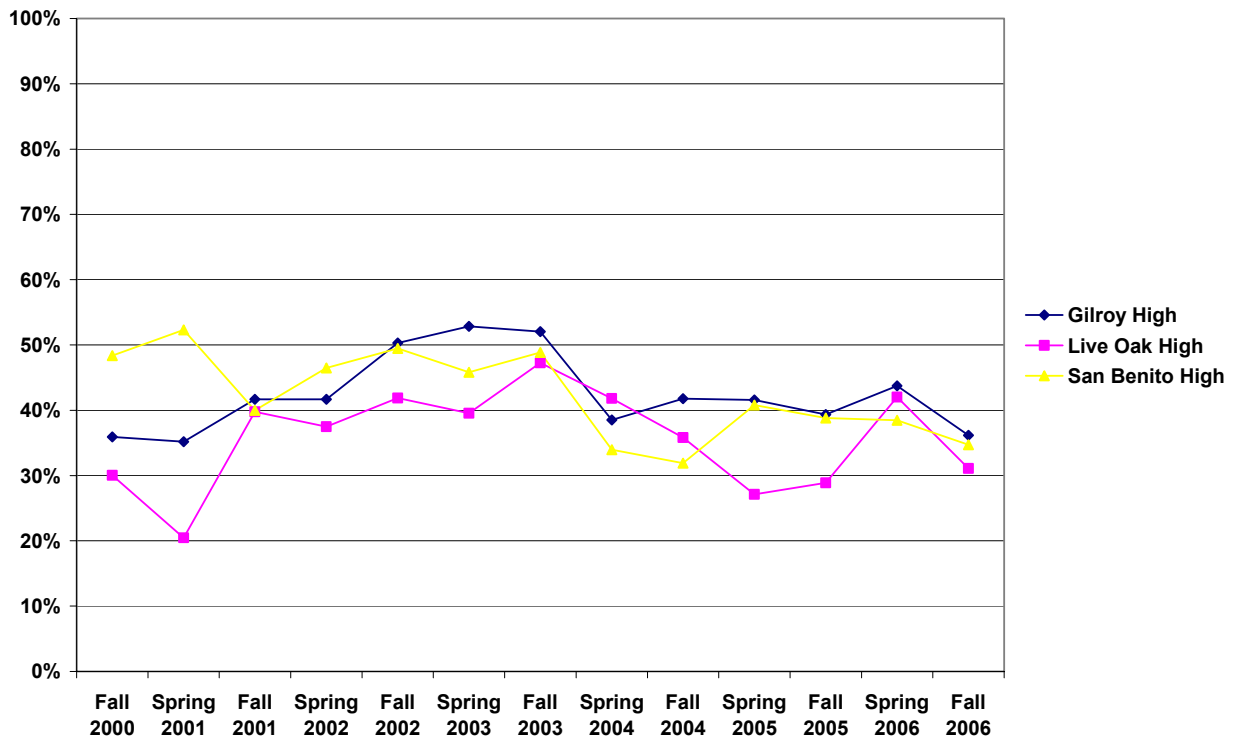
**Percentage of Local High School Students Requiring Remedial Writing**



**Reading.** Local high schools are doing slightly better in reading placement than the total new student population. Live Oak High shows the most variability and the lowest percentages of students requiring remedial reading courses.

Fall 2000 to Fall 2006					
Course	Min/Max	Gilroy High	Live Oak High	San Benito High	All Students
Reading	Minimum	35%	20%	32%	38%
	Maximum	53%	47%	52%	54%

**Percentage of Local High School Students Requiring Remediation in Reading**



### Placement within High Schools by Course

A course legend for the next tables is presented below. Joint course numbers (e.g., 910/1A or 440-250) mean the student could be placed in either class. There are some additional qualitative and quantitative data points used to place when scores are close to the cutoff.

Course	Class	Course	Class
Functional Analysis/Modeling	10	Composition	1A
Calculus	1A	Practical Writing	250
Elementary Algebra	205	Practical Writing or Composition	250-1A
Intermediate Algebra	233/233T	Basic Writing	440
Elementary Arithmetic	400	Basic Writing/Practical Writing	440-250
Pre-Algebra	402	No Placement/Unknown	NP
Algebra	910/1A		

**Language Placement WITHIN Each High School (Percentages may exceed 100% due to rounding)**

<b>High School</b>	<b>Language Course Placement</b>	<b>Summer/Fall 2005</b>	<b>Spring 2006</b>	<b>Summer/Fall 2006</b>
<b>Anzar High</b>	1A	38.89%	50.00%	66.67%
	250	38.89%	37.50%	25.00%
	440	22.22%	12.50%	8.33%
	<b>Total students</b>	<b>18</b>	<b>8</b>	<b>12</b>
<b>Gilroy High</b>	1A	37.18%	39.00%	41.78%
	250	41.99%	36.00%	40.75%
	250/1A	0.32%	1.00%	
	440	20.19%	24.00%	17.47%
	440/250	0.32%		
	<b>Total students</b>	<b>312</b>	<b>100</b>	<b>295</b>
<b>Live Oak High</b>	1A	44.53%	34.78%	46.01%
	250	39.84%	41.30%	37.26%
	440	15.63%	21.74%	16.73%
	440/250		2.17%	
	<b>Total students</b>	<b>256</b>	<b>46</b>	<b>263</b>
<b>Mt. Madonna High</b>	1A	15.69%	11.11%	27.27%
	250	39.22%	36.11%	36.36%
	440	45.10%	52.78%	34.09%
	440/250			2.27%
	<b>Total students</b>	<b>51</b>	<b>36</b>	<b>44</b>
<b>San Andreas Continuation High</b>	1A	8.89%	33.33%	6.06%
	250	44.44%	22.22%	42.42%
	250/1A		5.56%	
	440	44.44%	33.33%	48.48%
	440/250	2.22%	5.56%	3.03%
	<b>Total students</b>	<b>45</b>	<b>18</b>	<b>33</b>
<b>San Benito Adult</b>	1A	25.00%		
	250	62.50%		42.86%
	440	12.50%	100.00%	57.14%
	<b>Total students</b>	<b>8</b>	<b>1</b>	<b>7</b>
<b>San Benito High</b>	1A	40.54%	39.68%	41.37%
	250	34.46%	39.68%	39.93%
	440	25.00%	19.05%	18.35%
	440/250			0.36%
	No Placement			
	<b>Total students</b>	<b>296</b>	<b>63</b>	<b>278</b>

**Math Placement WITHIN Each High School (Percentages may exceed 100% due to rounding)**

High School	Algebra Course Placement	Summer/Fall 2005	Spring 2006	Summer/Fall 2006
Anzar High	1A		12.50%	7.69%
	205	68.18%	25.00%	23.08%
	233	9.09%	37.50%	30.77%
	233T	4.55%	12.50%	
	402	13.64%		7.69%
	NP	4.55%	12.50%	30.77%
	<b>Total students</b>	<b>22</b>	<b>8</b>	<b>13</b>
Gilroy High	10			0.31%
	1A	0.56%		0.31%
	205	39.55%	35.19%	36.34%
	233	28.53%	32.41%	27.02%
	233T	3.67%	3.70%	7.76%
	400	2.82%	3.70%	1.55%
	402	6.21%	10.19%	8.07%
	910	0.85%		4.35%
	910-1A	0.28%	0.93%	0.93%
	NP	17.51%	13.89%	13.35%
<b>Total students</b>	<b>354</b>	<b>108</b>	<b>322</b>	
Live Oak High	10	1.36%		
	1A	2.04%		1.11%
	205	25.51%	59.26%	33.70%
	233	33.67%	16.67%	33.70%
	233T	10.20%	1.85%	8.52%
	400	2.72%	3.70%	2.59%
	402	3.74%	18.52%	6.67%
	910	2.72%		2.59%
	910-1A	3.74%		1.48%
	NP	14.29%		9.63%
<b>Total students</b>	<b>294</b>	<b>54</b>	<b>270</b>	
Mt. Madonna High	205	43.86%	48.72%	39.58%
	233	10.53%	12.82%	16.67%
	400	10.53%	12.82%	8.33%
	402	10.53%	23.08%	18.75%
	NP	24.56%	2.56%	16.67%
	<b>Total students</b>	<b>57</b>	<b>39</b>	<b>48</b>
San Andreas Continuation High	205	37.74%	36.84%	50.00%
	233	9.43%	5.26%	3.13%
	400	13.21%	10.53%	9.38%
	402	16.98%	36.84%	28.13%
	NP	22.64%	10.53%	9.38%
	<b>Total students</b>	<b>53</b>	<b>19</b>	<b>32</b>
San Benito Adult	205	50.00%	100.00%	16.67%
	233	25.00%		33.33%
	402	12.50%		16.67%
	910	12.50%		
	NP			33.33%
	<b>Total students</b>	<b>8</b>	<b>1</b>	<b>6</b>
San Benito High	1A	0.92%		
	205	35.78%	47.06%	33.01%
	233	25.99%	30.88%	30.07%

	233T	4.28%	1.47%	5.56%
	400	2.75%	8.82%	2.61%
	402	8.87%	5.88%	7.84%
	910	2.14%		3.92%
	910-1A	0.92%		0.33%
	NP	18.35%	5.88%	16.67%
	<b>Total students</b>	<b>327</b>	<b>68</b>	<b>306</b>

**Placement by Language Course Across All High Schools (Percentages may exceed 100% due to rounding)**

High School	Language Course Placement	Summer/Fall 2005	Spring 2006	Summer/Fall 2006
<b>Anzar High</b>	1A	0.71%	1.47%	0.86%
	250	0.71%	1.10%	0.32%
	440	0.41%	0.37%	0.11%
<b>Gilroy High</b>	1A	11.76%	14.34%	13.13%
	250	13.29%	13.24%	12.81%
	250-1A	0.10%	0.37%	
	440	6.39%	8.82%	5.49%
	440-250	0.10%		
<b>Live Oak High</b>	1A	11.56%	5.88%	13.02%
	250	10.34%	6.99%	10.55%
	440	4.06%	3.68%	4.74%
	440-250	0.00%	0.37%	
<b>Mt. Madonna High</b>	1A	0.81%	1.47%	1.29%
	250	2.03%	4.78%	1.72%
	440	2.33%	6.99%	1.61%
	440-250	0.00%		0.11%
<b>San Andreas Continuation High</b>	1A	0.41%	2.21%	0.22%
	250	2.03%	1.47%	1.51%
	250-1A	0.00%	0.37%	
	440	2.03%	2.21%	1.72%
	440-250	0.10%	0.37%	0.11%
<b>San Benito Adult</b>	1A	0.20%		
	250	0.51%		0.32%
	440	0.10%	0.37%	0.43%
<b>San Benito High</b>	1A	12.17%	9.19%	12.38%
	250	10.34%	9.19%	11.95%
	440	7.51%	4.41%	5.49%
	440-250			0.11%
	No Placement			
<b>Total number of students, by time of test, who were placed in a numbered language class</b>		<b>986</b>	<b>272</b>	<b>929</b>

**Placement by Mathematics Course Across All High Schools (Percentages may exceed 100% due to rounding)**

<b>High School</b>	<b>Algebra Course Placement</b>	<b>Summer/Fall 2005</b>	<b>Spring 2006</b>	<b>Summer/Fall 2006</b>
<b>Anzar High</b>	1A		0.34%	0.10%
	205	1.35%	0.67%	0.30%
	233	0.18%	1.01%	0.40%
	233T	0.09%	0.34%	
	402	0.27%		0.10%
	NP	0.09%	0.34%	0.40%
<b>Gilroy High</b>	10			0.10%
	1A	0.18%		0.10%
	205	12.56%	12.79%	11.74%
	233	9.06%	11.78%	8.73%
	233T	1.17%	1.35%	2.51%
	400	0.90%	1.35%	0.50%
	402	1.97%	3.70%	2.61%
	910	0.27%		1.40%
	910-1A	0.09%	0.34%	0.30%
	NP	5.56%	5.05%	4.31%
<b>Live Oak High</b>	10	0.36%		
	1A	0.54%		0.30%
	205	6.73%	10.77%	9.13%
	233	8.88%	3.03%	9.13%
	233T	2.69%	0.34%	2.31%
	400	0.72%	0.67%	0.70%
	402	0.99%	3.37%	1.81%
	910	0.72%		0.70%
	910-1A	0.99%		0.40%
	NP	3.77%		2.61%
<b>Mt. Madonna High</b>	205	2.24%	6.40%	1.91%
	233	0.54%	1.68%	0.80%
	400	0.54%	1.68%	0.40%
	402	0.54%	3.03%	0.90%
	NP	1.26%	0.34%	0.80%
<b>San Andreas Continuation High</b>	205	1.79%	2.36%	1.60%
	233	0.45%	0.34%	0.10%
	400	0.63%	0.67%	0.30%
	402	0.81%	2.36%	0.90%
	NP	1.08%	0.67%	0.30%
<b>San Benito Adult</b>	205	0.36%	0.34%	0.10%
	233	0.18%		0.20%
	402	0.09%		0.10%
	910	0.09%		
	NP			0.20%
<b>San Benito High</b>	1A	0.27%		
	205	10.49%	10.77%	10.13%
	233	7.62%	7.07%	9.23%

	233T	1.26%	0.34%	1.71%
	400	0.81%	2.02%	0.80%
	402	2.60%	1.35%	2.41%
	910	0.63%		1.20%
	910-1A	0.27%		0.10%
	NP	5.38%	1.35%	5.12%
<b>Total number of students, by time of test, who were placed in a numbered mathematics class</b>		<b>1115</b>	<b>297</b>	<b>997</b>